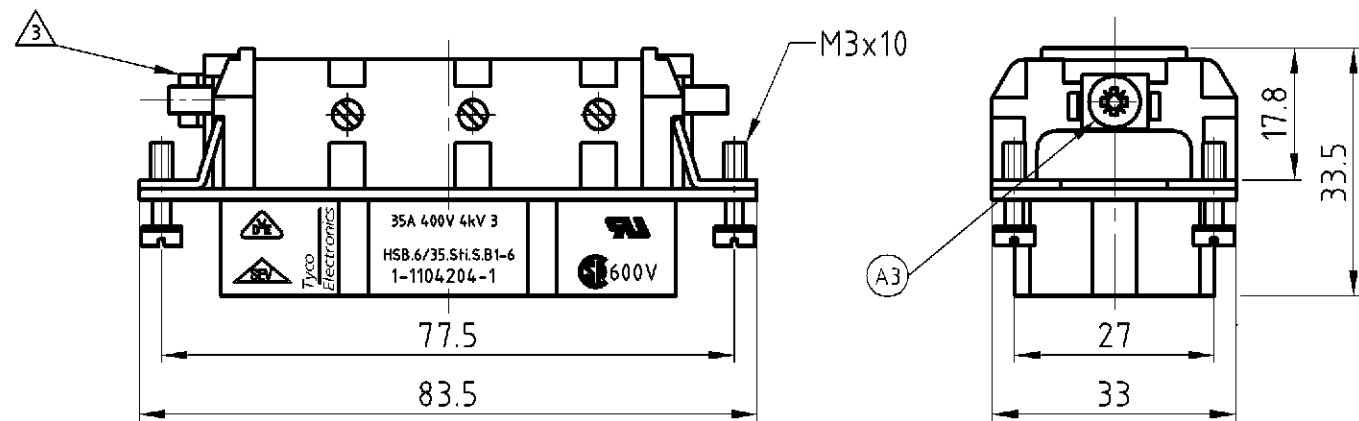


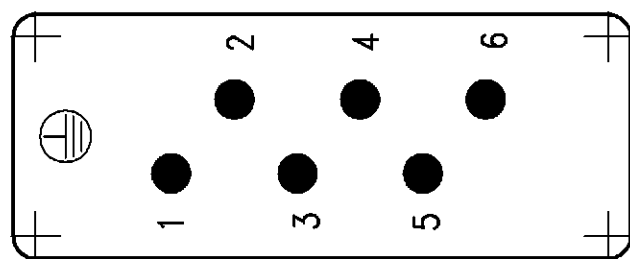
LOC	DIST	REVISIONS ÄNDERUNGEN			
P	LTR	DESCRIPTION BESCHREIBUNG	DATE	DWN	APVD
A1	-				
PROJEKT NR.:		Notes and design changed ECR-06-020881	30.08.06	SR	SM



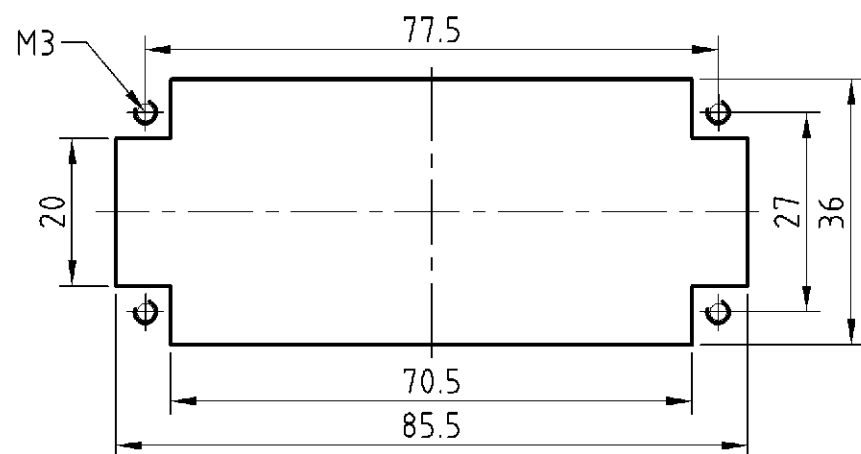
NOTES

- ① FINISH: CONTACT , AG
- ② POWER CONTACT: 1 TO 6
OUTER DIMENSIONS OF INSULATION: MAX. ϕ 7.0 MM
- ③ GROUNDING CONTACT
- ④ SUITABLE HOOD SIZE 6: SERIES HB; HD; EMV; HIP
- ⑤ STANDARDS:
DIN EN 61984; DIN EN 60664-1
- ⑥ PACKAGING: 5 PIECES IN A CARTON
- ⑦ PACKAGING: 270 PIECES IN A BOX

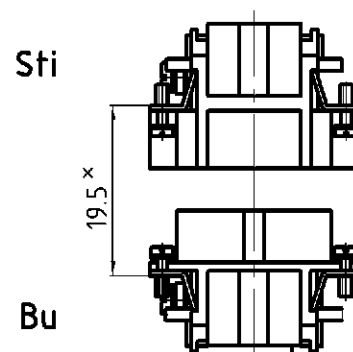
Contact arrangement view from termination side



Panel cut-out for contact insert when used without housing



Assembling instruction



X Distance for guaranteed contact max: 21 mm

1	1	Female insert		beige	1	
0-11-1		DESCRIPTION	MATERIAL	COLOR	ITEM NO. POS.	REMARKS
①	⑥	THIS DRAWING IS A CONTROLLED DOCUMENT FOR AMP INCORPORATED. IT IS SUBJECT TO CHANGE AND THE CONTROLLING ENGINEERING ORGANIZATION SHOULD BE CONTACTED FOR THE LATEST REVISION. DIESES ZEICHNUNGSDOKUMENT WIRD DURCH AMP INCORPORATED KONTROLLIERT. ÄNDERUNGEN, DIE DEM TECHNISCHEN FORTSCHRITT DIENEN, SIND VORBEHALTEN. DEN JEWELNS LETZTGUELTIGEN ÄNDERUNGSSTAND ERFAHREN SIE AUF ANFRAGE.		DWN Schweiger	18.06.1997	HTS Elektrotechnik 53819 Neunkirchen, Germany
		DIMENSIONS: DIMENSIONEN: mm	TOLERANCES UNLESS OTHERWISE SPECIFIED: ALLGEMEINTOLERANZEN p. ISO 8015 p. ISO 2768 - mH - E p. DIN 16901 - 14.0	CHK Kramer	04.06.98	
HSB.6/35.Bu.S.B1-6.KM	HSB.6/35.Bu.S.B1-6		0 PLC # 1 PLC # 2 PLC # 3 PLC # ANGLES /WINKEL # FINISH /OBERFLAECHE/FARBE	APVD -		SIZE A3
ORDERING TEXT / BESTELLTEXT				PRODUCT SPEC PRODUKTSPEZ. 108-74006	APPLICATION SPEC VERARBEITUNGSSPEZ. 114-74007	
				WEIGHT GEWICHT 90 g	CAGE CODE 00779	MATERIAL
				CUSTOMER DRAWING	/KUNDENZEICHNUNG	MASSSTAB 1:1 BLATT 1 OF 1 REV A3