



### Electrical specifications

**Center Frequency:** 5745 MHz  
**Bandwidth:** 20 MHz  
**Input / Output Impedance:** 50 Ohms  
**Passband:** 5735-5755 MHz  
**Passband Insertion Loss:** 2.0 dB @ 5735-5755 MHz  
**IL Variation:** 6.5 dB  
**Passband Ripple:** <0.2 dB  
**Passband Return Loss:** >14 dB  
**Rejection:** DC-(CF-20)MHz, 60 dBc  
**Rejection 2:** (CF+20)MHz -6200 MHz 60 dBc  
**Power Handling:** 50 W  
**Group Delay Variation:** 200ns over any 0.5 MHz

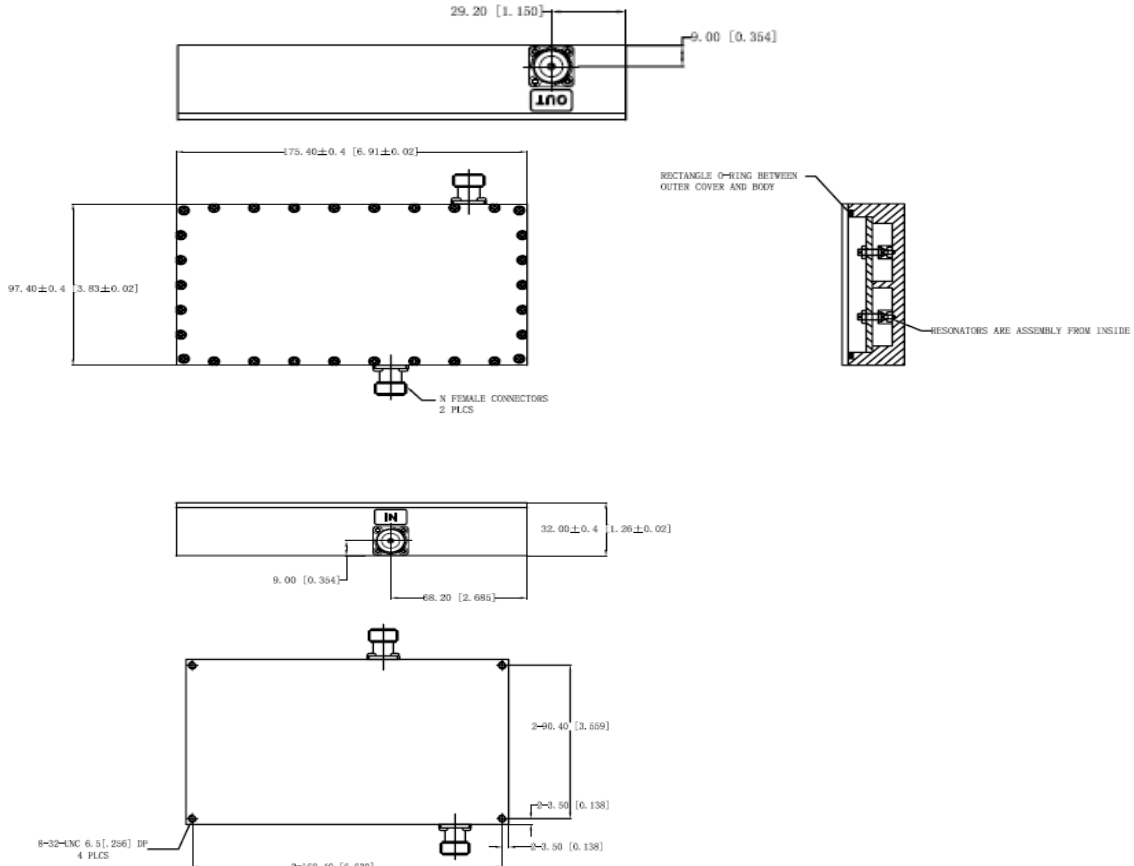
### Mechanical

**Mounting Method:** Threaded Mounting Holes  
**Connector Type:** N-Type Female  
**Dimensions:** 6.93" x 3.86" x 1.26"  
 (176mm x 98mm x 32mm)

### Environmental

**Operating Temperature:** -30 to +60 deg.C  
**Storage Temperature:** -55 to +95 deg.C  
**Shock:** 20 G. 11ms  
**Vibration:** 20 G. 5 to 200 Hz

### Outline Drawing:





# 5745 MHz Cavity Bandpass Filter

Part Number: AB5745B743



## Response Plot:

