

Grove - 5-Way Switch

SKU 111020048

The Grove - 5-Way Switch can be used to detect the switch position and event like single click/double click/long press, etc. It can detect left/right/up/down/center 5 directions. The 5-way switch will be a great option for multifunction control.

With only one small switch to meet all your needs for switch control!

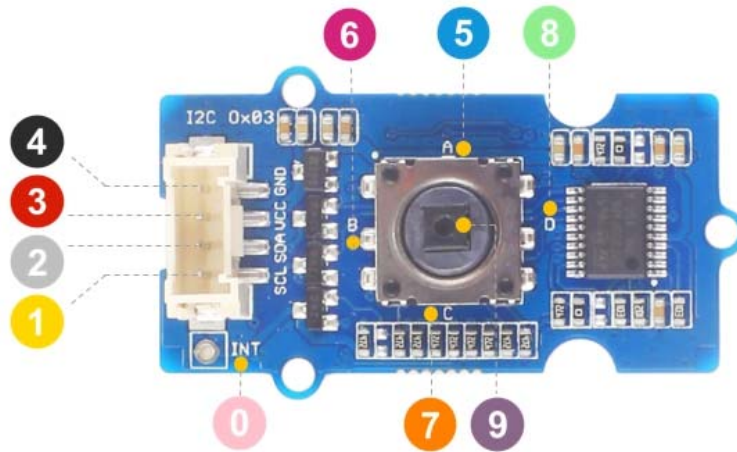
Features

- 5 way switch
- Good heat resistance
- Long operating Life
- Grove compatible

Typical Applications

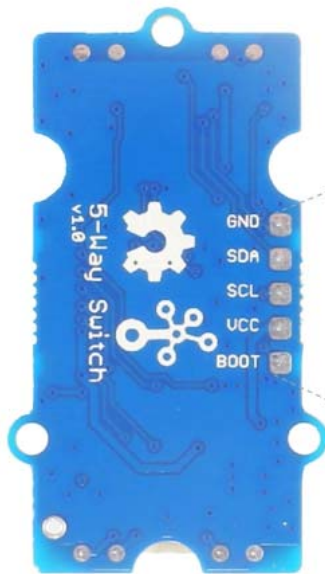
- Game control
- Multifunction control

Pin Map



- 4 GND: connect this module to the system GND
- 3 VCC: you can use 5V or 3.3V for this module
- 2 SDA: I²C serial data
- 1 SCL: I²C serial clock

- 5 KEY A: default High, output Low when pressing.
- 6 KEY B: default High, output Low when pressing.
- 7 KEY C: default High, output Low when pressing.
- 8 KEY D: default High, output Low when pressing.
- 9 KEY E: default High, output Low when pressing.
- 0 Interrupt: provide the interrupt pin for customer use.



- GND: connect to the system GND
- SDA: I²C serial data, act as UART_RX when burning firmware
- SCL: I²C serial clock, act as UART_TX when burning firmware
- VCC: when you burn the firmware, VCC should be 3.3V
- BOOT: need to be pulled High, when use UART mode to burn firmware

Technical Details

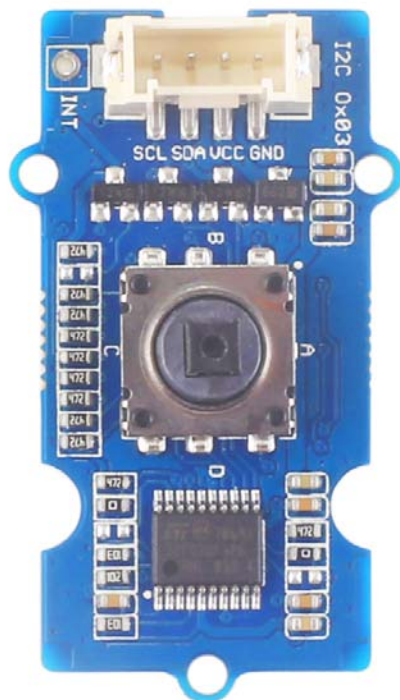
Dimensions	40mm x 20mm x 0mm
Weight	G.W 9.90g
Battery	Exclude

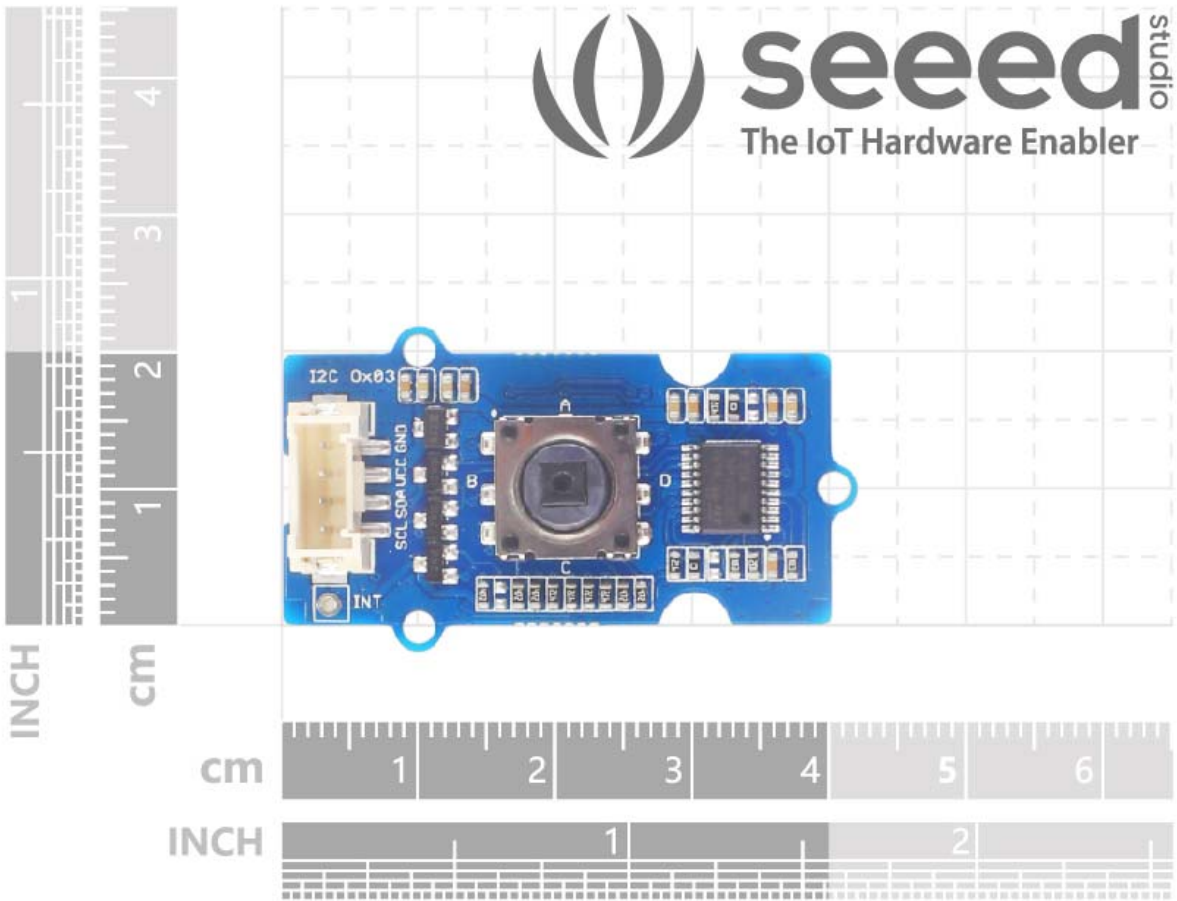
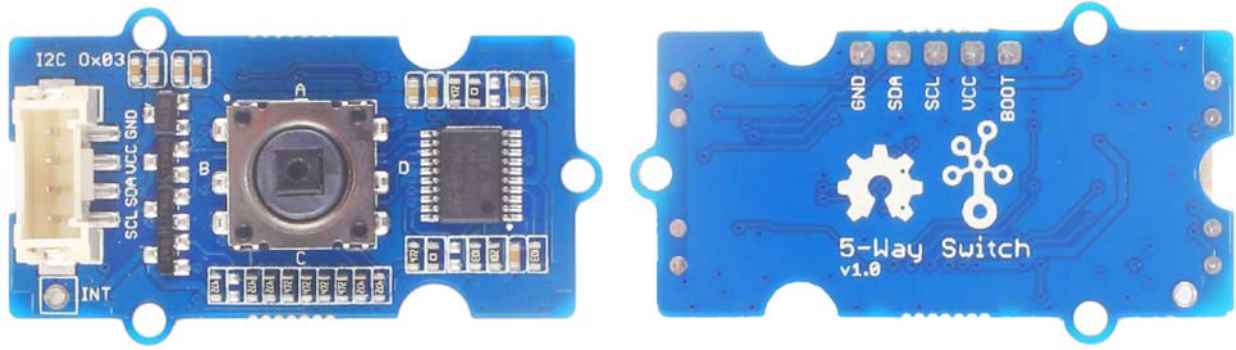
Part List

Grove - 5-Way Switch	1
Grove Cable	1

ECCN/HTS

ECCN	EAR99
HSCODE	8536500000






seeedstudio
 The IoT Hardware Enabler