

MATERIALS AND FINISHES :

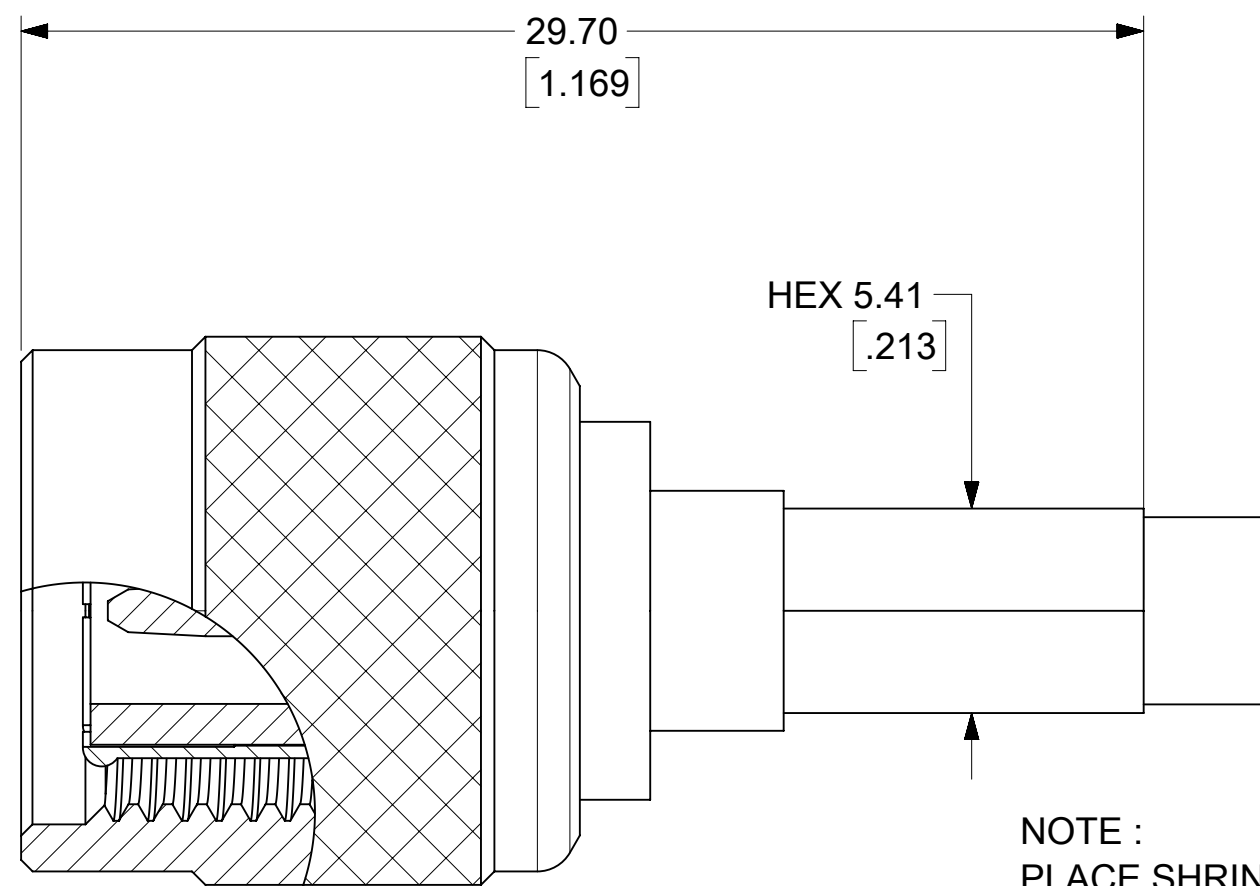
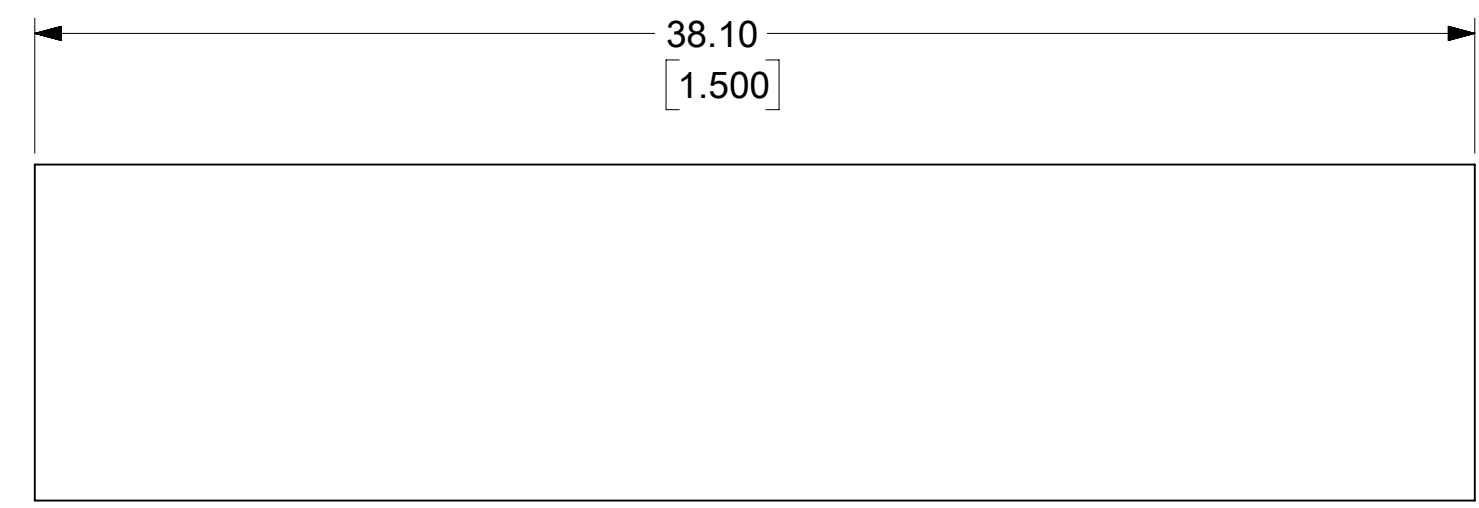
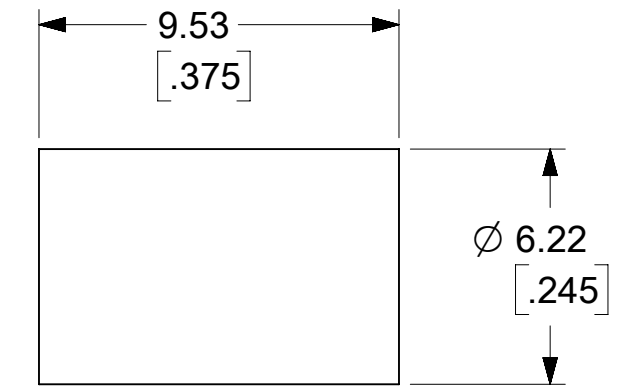
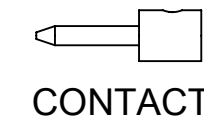
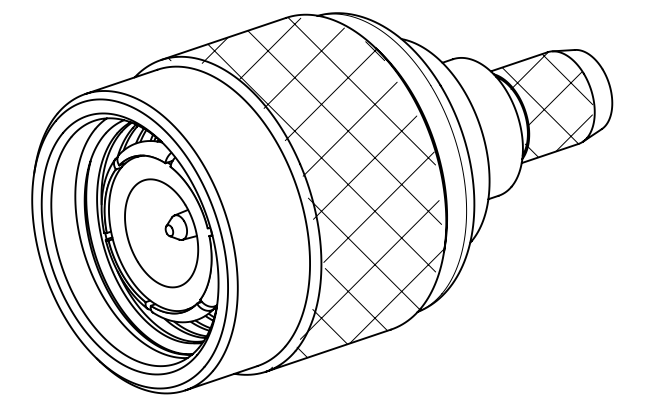
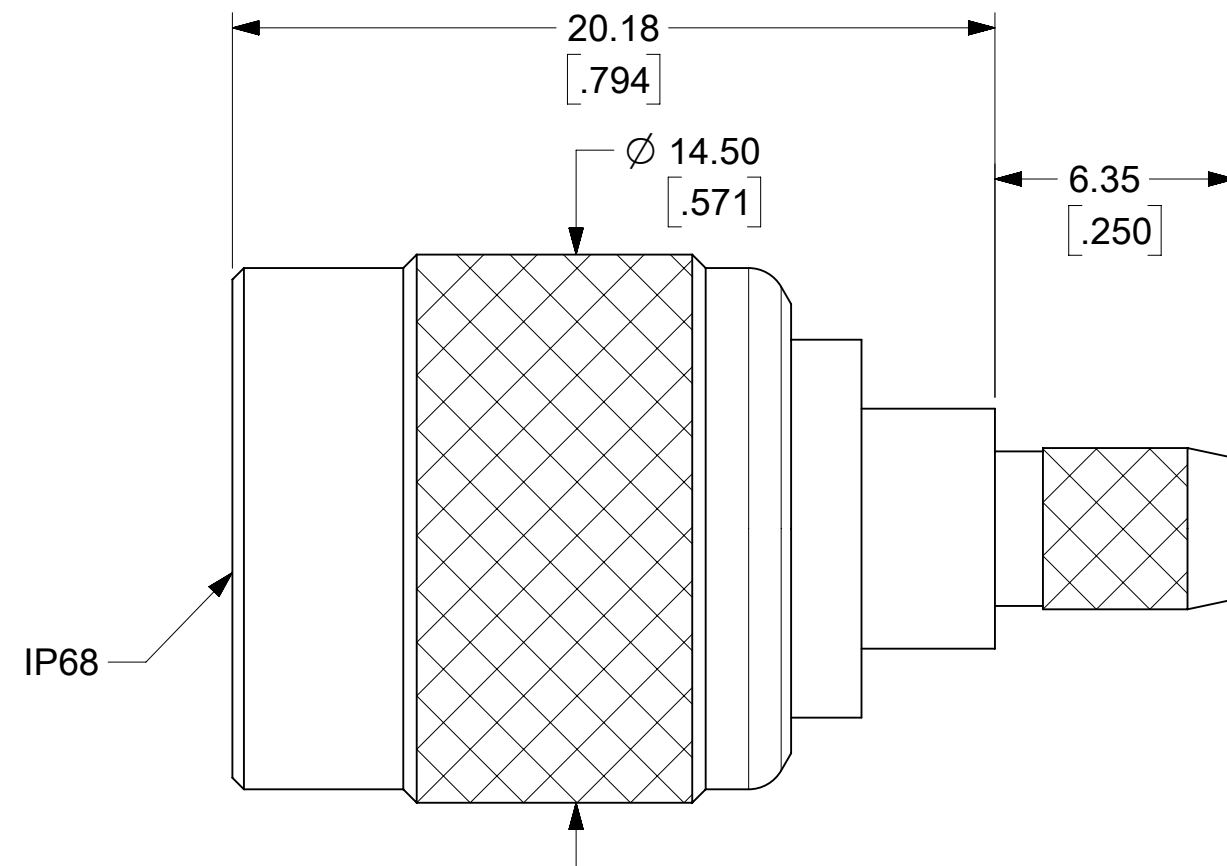
BODY, COUPLING NUT, CRIMP TUBE BRASS
PLATED NICKEL

CONTACT BERYLLIUM COPPER
PLATED GOLD (SEE TABLE)

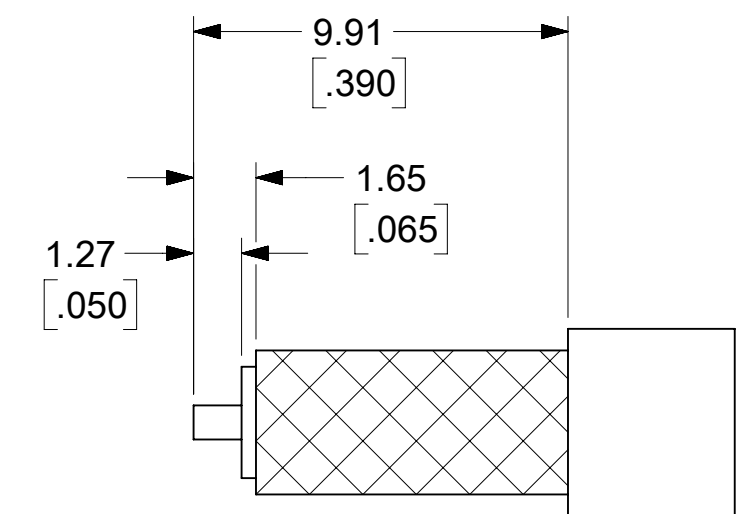
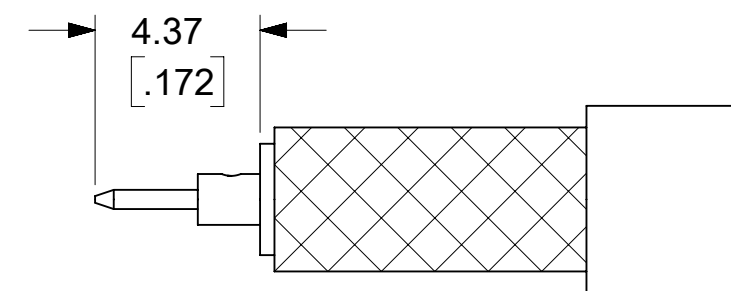
CABLE CONTACT BRASS
PLATED GOLD

INSULATOR TEFLON

SHRINK TUBE ATUM OR EQUIVALENT



NOTE :
PLACE SHRINK TUBE
ONTO CABLE PRIOR
TO INSERTION IN BODY



RECOMMENDED CABLE STRIP
DIMENSIONS

MIL - STD - 348A, FIG. 313.1	INTERFACE
SPECIFICATION	DESCRIPTION

73216-1982	10 u"	ONE PER BAG PER 89542-0080
73216-1981	10 u"	BY TRAY PER 89542-0062
73216-1980	30 u"	BY TRAY PER 89542-0062
PART NO.	CONTACT PLTG	PACKAGING

A5	2018/10/25	ADD PKG PN PER GLSS
REV.	DATE	DESCRIPTION

SYMBOLS DIMENSION UNITS: MM/IN SCALE: CURRENT REV DESC: GENERAL TOLERANCES (UNLESS SPECIFIED) ANGULAR TOL ± 2.0° 4 PLACES ± 3 PLACES ± 2 PLACES ± 1 PLACE ± 0 PLACES ± DRAFT WHERE APPLICABLE MUST REMAIN WITHIN DIMENSIONS THIRD ANGLE PROJECTION DRAWING SERIES: C-SIZE 73216	THIS DRAWING CONTAINS INFORMATION THAT IS PROPRIETARY TO MOLEX ELECTRONIC TECHNOLOGIES, LLC AND SHOULD NOT BE USED WITHOUT WRITTEN PERMISSION			
	EC NO: 606708 DRWN: CWEI02 2018/10/23 CHK'D: YCHENG 2018/11/15 APPR: YCHENG 2018/11/15			
INITIAL REVISION: DRWN: AZR 2008/12/01 APPR: JDW 2008/12/01			TNC PLUG STRAIGHT IP68 FOR RG58 50 OHMS TNC-PC, EWR-3829	
PRODUCT CUSTOMER DRAWING			DOCUMENT NUMBER: SD-73216-198 DOC TYPE: PSD DOC PART: 001 REVISION: A5	
MATERIAL NUMBER: SEE NOTE CUSTOMER: GENERAL MARKET SHEET NUMBER: 1 OF 1				