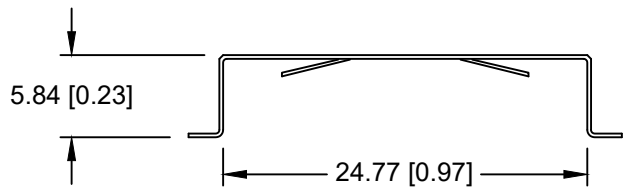
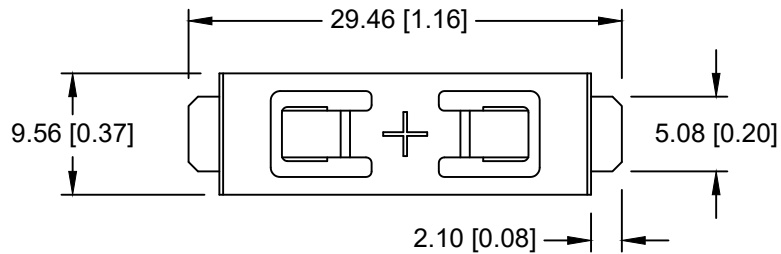
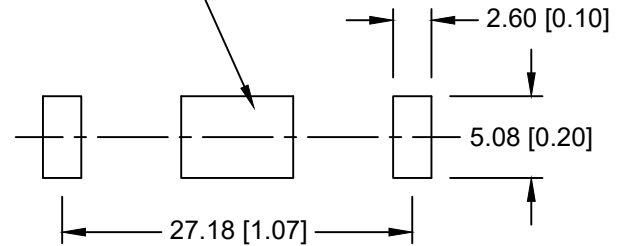


Date	SYM	REVISION RECORD	AUTH	DR.	CK.
08/25/17	E	Dim. 5.84 was 5.59	T.B.	B.S.	
03/26/19	F	UPDATED TO "ROHS COMPLIANT"	T.B.	B.S.	
04/05/19	G	UPDATED NOTES	T.B.	B.S.	
08/17/22	H	UPDATED NOTES	T.B.	B.S.	



NEGATIVE CONTACT PAD  
NICKEL OR GOLD PLATED  
RECOMMENDED




PCB LAYOUT

NOTES:

- \* Material- 0.25mm Phosphor Bronze, Nickel plated.
- \* Vibration test: 10~50 hz swept in 60 seconds  
x,y,z direction: 1 hour each direction, total 3 hrs  
Amplitude: 3mm pp
- \* Result: no dislodgement of the cell or damage  
no discontinuity over 10 micro-seconds
- \* Shock test: half sine wave acceleration 80g.  
6 ms 1 shock pulses each direction per axis, total 3 times
- \* Result: no evidence of physical damage
- \* Drop Test: Mounted on board and dropped 1 time per direction  
from 1m high to wooden floor
- \* Result: No dislodgement of the cell, No damage to the holders
- \* ROHS COMPLIANT

CELL SIZE	RETAINS BATTERY NUMBERS
24mm	BR2450, CR2450, DL2450, LIR2450

Tolerance (Except as noted)	 <b>Memory Protection Devices, Inc</b> 200 Broad Hollow Road, Farmingdale, New York 11735	Scale	Drawn By B.S.
		Approved By T.B.	
decimal ±.5 (.020)	Title	CR2450 BATTERY STRAP, SMT	
Fractional ± .8 (.030)	Date	Drawing Number	
Angular ± 3°	08/17/22	BC-2005	