

Screw M3x25 and Profile Gasket Qty 2 (See sheet 2)

Screw M3x25 and Flat Gasket Qty 2 (See sheet 2)

Screw M3x27 with Grommet & Integrated Gasket Qty 2 (See sheet 2)

PART NUMBER MATRIX

E	6	5	B	X	X	X	X	X	X	1	X	X	X	X
---	---	---	---	---	---	---	---	---	---	---	---	---	---	---

E5-Form A (16mm contact spacing)
6 - Number of poles: N=PC, I=CEI, P=PLR, A=PYC CSA-UL, B=PLR CSA-UL
5 - Cable type: N=PC, I=CEI, P=PLR, A=PYC CSA-UL, B=PLR CSA-UL
B - Cable cross section area: 2-0.5 mm² (20AWG), 3-0.75 mm² (18AWG)
X - Head colour: N=Black, A=CSA-UL Black
X - L - Cable length: Q=M2 moulded on the DM head A=1000mm B=500mm C=2000mm D=2500mm E=3000mm F=3500mm G=4000mm H=4500mm I=5000mm M=5500mm U=9000mm N=4000mm
X - L1 - Distance between the two head in cm: P=4500mm Q=7000mm R=7500mm S=8000mm T=8500mm U=9000mm K=1000mm
1 - Earth pin location: I=46/M12
X - Gasket screws: 1=NBR profile gasket+screw, 2=NBR flat gasket+screw, 3=Silicon profile gasket+screw, 4=Silicon flat gasket+screw, P=NBR integrated gasket+screw (IP67), K=NBR integrated gasket+stainless steel screw (IP 67)
X - Internal circuit type
X - Supply voltage and LED colours: 1 - 5V Red LED, A - 5V Green LED, 6 - 5V Amber LED, 1A, 5-12V, 2B, H-24V, 3, 6, 4-48V, 4, 0L, +15V, 5, E, M-230V

EXAMPLE: E65BB2AB1311C4H

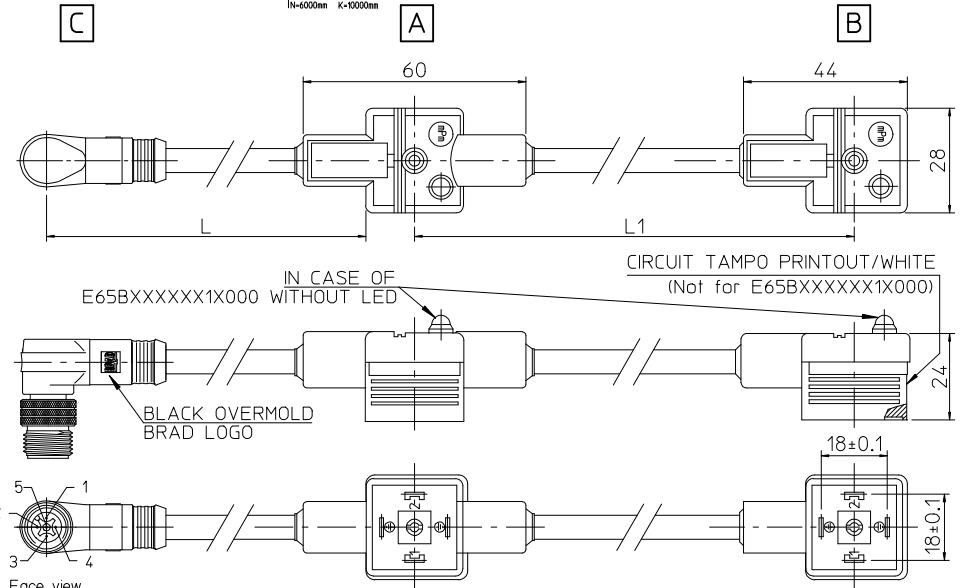


Table of length tolerances [mm]

Over	Up to and including	Tolerance
0	1000	±20
1000	3000	±30
3000	5000	±40
5000	10000	±50
10000	15000	±100
15000	20000	±150
20000		±L/100

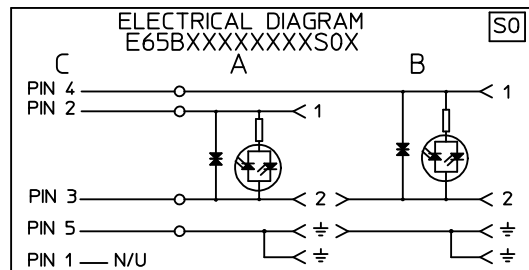
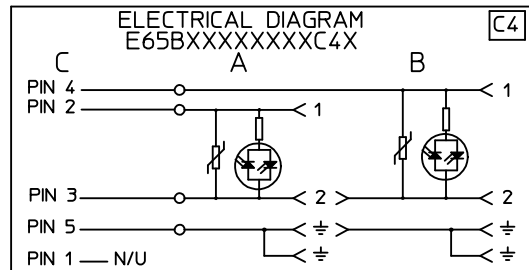
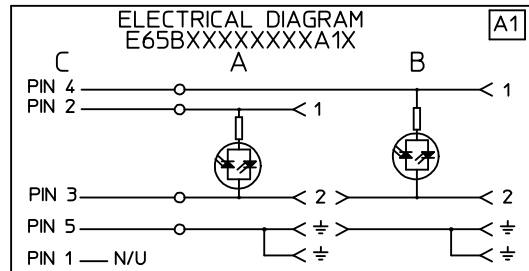
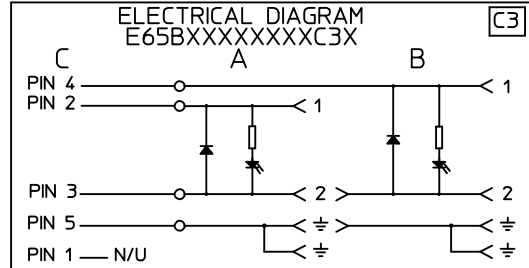
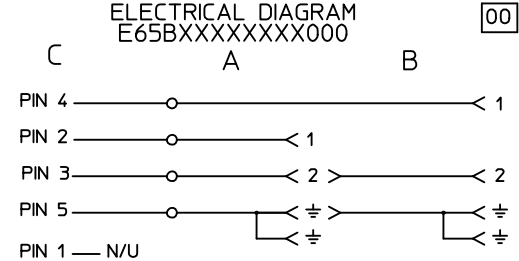


CHART 1

Molex PN	Engineering No.	L [mm]	L1 [mm]
1210550308	E65BB2AB1311C4H	1500	130



ORIGINAL RELEASE
 EC NO: IPG2016-0461
 DRWN: JMARSZALEK 2014/01/14
 CHKD:
 APPR: MIWASIECZKO 2015/09/28

QUALITY SYMBOLS
 ▽=0
 ◻=0

DESCRIPTION
 A

GENERAL TOLERANCES (UNLESS SPECIFIED)

	mm	INCH
4 PLACES	± ---	± ---
3 PLACES	± ---	± ---
2 PLACES	± ---	± ---
1 PLACE	± ---	± ---
0 PLACE	± ---	± ---

ANGULAR ±---°
 DRAFT WHERE APPLICABLE MUST REMAIN WITHIN DIMENSIONS

DIMENSION STYLE MM ONLY

DRAWN BY: JMARSZALEK DATE: 2014/01/14
 CHECKED BY: DATE:
 APPROVED BY: MIWASIECZKO DATE: 2015/09/28
 MATERIAL NO.: SEE CHART 1

SCALE - DESIGN UNITS METRIC

THIRD ANGLE PROJECTION

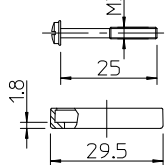
TITLE
 E65BXXXXXX1XXXX
 DUAL DIN FORM A WITH M12

molex

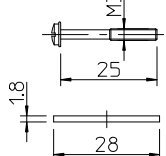
DOCUMENT NO.: SD-121055-008 SHEET NO.: 1 OF 1

THIS DRAWING CONTAINS INFORMATION THAT IS PROPRIETARY TO MOLEX INCORPORATED AND SHOULD NOT BE USED WITHOUT WRITTEN PERMISSION

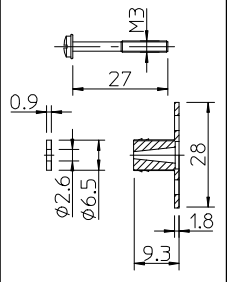
Screw M3x25
and Profile Gasket
Qty 2
(See sheet 2)



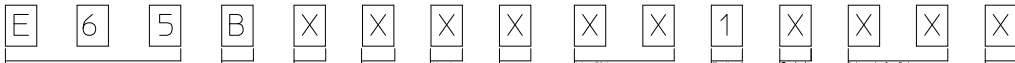
Screw M3x25
and Flat Gasket
Qty 2
(See sheet 2)



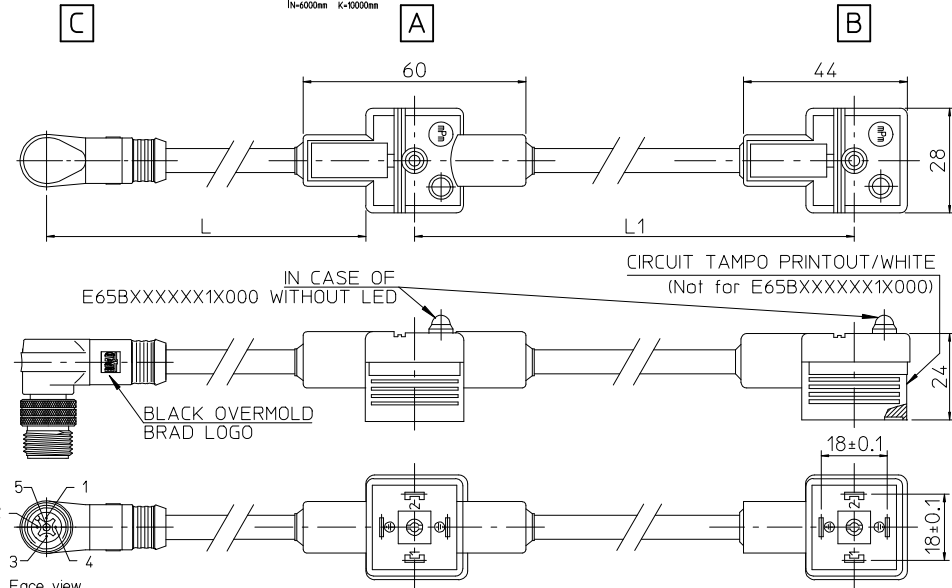
Screw M3x27
with Grommet
& Integrated Gasket
Qty 2
(See sheet 2)



PART NUMBER MATRIX



EXAMPLE: E65BB2AB1311C4H



Over	Up to and including	Tolerance
0	1000	±20
1000	3000	±30
3000	5000	±40
5000	10000	±50
10000	15000	±100
15000	20000	±150
20000		±L/100

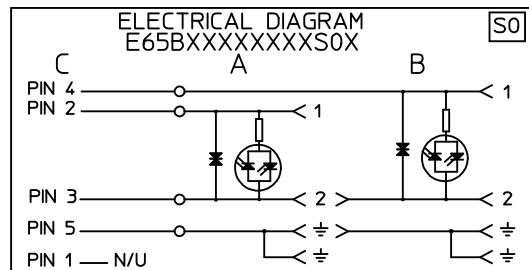
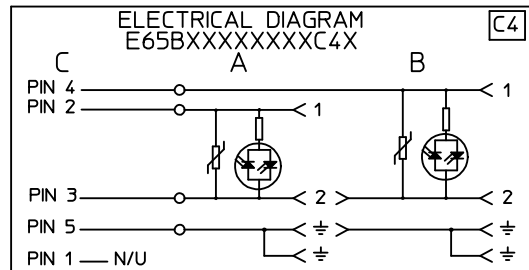
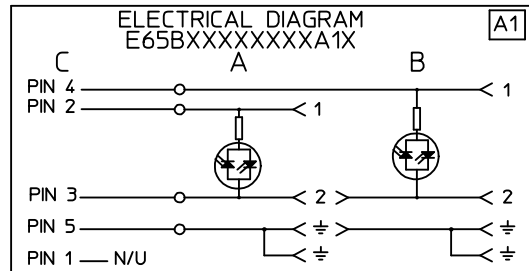
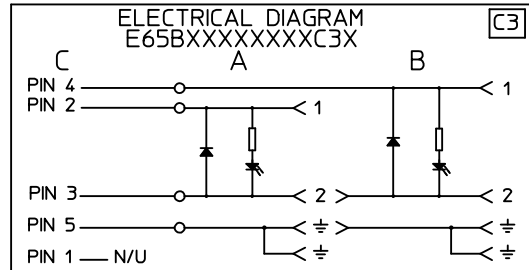


CHART 1

Molex PN	Engineering No.	L [mm]	L1 [mm]
1210550308	E65BB2AB1311C4H	1500	130

QUALITY SYMBOLS

ORIGINAL RELEASE
EC NO: IPG2016-0461
DRWN: JMARSZALEK 2014/01/14
CHKD:
APPR: MIWASIECZKO 2015/09/28

DESCRIPTION

ANGULAR ±---°

DRAFT WHERE APPLICABLE MUST REMAIN WITHIN DIMENSIONS

GENERAL TOLERANCES (UNLESS SPECIFIED)

	mm	INCH
4 PLACES	± ---	± ---
3 PLACES	± ---	± ---
2 PLACES	± ---	± ---
1 PLACE	± ---	± ---
0 PLACE	± ---	± ---

DIMENSION STYLE: MM ONLY

SCALE: -

DESIGN UNITS: METRIC

THIRD ANGLE PROJECTION

TITLE: E65BXXXXXX1XXXX DUAL DIN FORM A WITH M12

DRAWN BY: JMARSZALEK DATE: 2014/01/14

CHECKED BY: DATE:

APPROVED BY: MIWASIECZKO DATE: 2015/09/28

MATERIAL NO. SEE CHART 1

SIZE: A3

THIS DRAWING CONTAINS INFORMATION THAT IS PROPRIETARY TO MOLEX INCORPORATED AND SHOULD NOT BE USED WITHOUT WRITTEN PERMISSION

DOCUMENT NO. SD-121055-008

SHEET NO. 1 OF 1

moLEX