

RED INDICATES ORIGINAL

| DASH NO | FIG NO | CABLE ACCOMMODATED | A DIM | B DIM | C HEX | D DIA | E FLATS | ASSEMBLY PER |
|---------|--------|---|----------------|----------------|-------|-------|---------|--------------|
| -003 | | RG-174, -188, -316 | 2.730 2.450 | 1.500 1.220 | | | | |
| -004 | | RG-179, RG-187 | 2.730 2.450 | 1.500 1.220 | | | | |
| -008 | | RG-195, RG-180 421-111 ESSEX | 2.730 2.450 | 1.500 1.220 | .178 | | | |
| -009 | | 8218 BELDEN YR23023 BELDEN 21-597 ESSEX | 2.730 2.450 | 1.500 1.220 | | | | |
| -010 | 1,2 | RG-122 | 2.730 2.450 | 1.500 1.220 | | .516 | .437 | |
| -011 | | RG-58, -141, -303 21-597 ESSEX | 2.730 2.450 | 1.500 1.220 | .213 | | | |
| -012 | | RG-55, -142, -223 RG-400 | 2.730 2.450 | 1.500 1.220 | | | | |
| -013 | | RG-59, RG-62 | 2.730 2.450 | 1.500 1.220 | | | | |
| -013A | | TCC-75-2 | 2.730 2.450 | 1.500 1.220 | .255 | | | |
| -014 | | 8212 BELDEN | 2.730 2.450 | 1.500 1.220 | | | | TAI-117 |
| -015 | | RG-71 730A AT&T | 2.730 2.450 | 1.500 1.220 | .290 | | | |
| -016 | 1 | 724 AT&T 8281 BELDEN | 2.730 2.450 | 1.500 1.220 | .324 | .578 | .500 | |
| -017 | | RG-6 | 2.730 2.450 | 1.500 1.220 | .340 | | | |
| -018 | 1,2 | 9268 BELDEN | 2.730 2.450 | 1.500 1.220 | | .516 | .437 | |
| -019 | | 8279 BELDEN | 2.730 2.450 | 1.500 1.220 | | | | |
| -020 | 1 | 9248 BELDEN | 2.730 2.450 | 1.500 1.220 | .290 | .578 | .500 | |
| -023 | | 89108 BELDEN | 2.730 2.450 | 1.500 1.220 | .255 | .516 | .437 | |
| -025 | 1,2 | 734A AT&T | 2.730 2.450 | 1.500 1.220 | .255 | | | |
| -026 | | 735A AT&T | 2.730 2.450 | 1.500 1.220 | .178 | .516 | .437 | |
| -027 | | KS19224L2 AT&T | 2.730 2.450 | 1.500 1.220 | .324 | | | |

DWG SIZE C DATA CONTAINED IN THIS DOCUMENT IS PROPRIETARY TO TROMPETER ELECTRONICS INC. AND SHALL NOT BE DISCLOSED, COPIED OR USED FOR PROCUREMENT OR MANUFACTURE WITHOUT EXPRESS WRITTEN PERMISSION.

| REVISIONS | | | 1-0453 | SH 1C |
|-----------|-------|--|--------|---------------|
| REV | ED | DESCRIPTION | DWN | APPROVED DATE |
| V | 13436 | ADDED -023 TO CABLES ACCOMMODATED AND -023/-W023 TO BDM; SEE ECO | DKC | 5/24/60 |

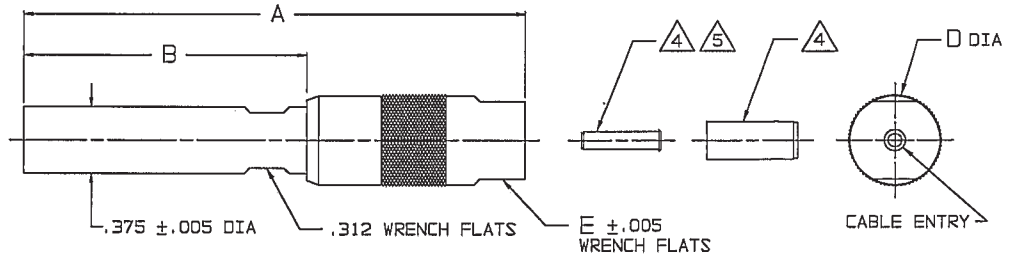


FIG 1 Δ
-003 SHOWN

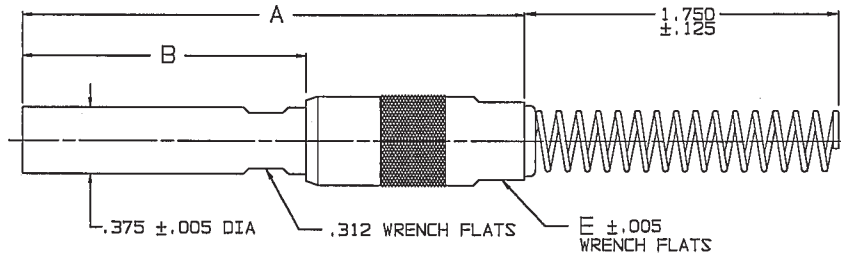


FIG 2 Δ
-003 SHOWN

| INCH | MM |
|-------|-------|
| .005 | 0.13 |
| .030 | 0.76 |
| .070 | 1.78 |
| .090 | 2.29 |
| .125 | 3.18 |
| .178 | 4.52 |
| .213 | 5.41 |
| .255 | 6.48 |
| .290 | 7.37 |
| .312 | 7.92 |
| .324 | 8.23 |
| .340 | 8.65 |
| .375 | 9.53 |
| .437 | 11.10 |
| .500 | 12.70 |
| .516 | 13.11 |
| .578 | 14.68 |
| 1.220 | 30.99 |
| 1.500 | 38.10 |
| 1.750 | 44.45 |
| 2.450 | 62.23 |
| 2.730 | 69.34 |

Δ IF BEND RELIEF SPRING REQUIRED (FIG 2) ADD SUFFIX "BR" TO CABLE GROUP DASH NO (NOT AVAILABLE FOR CABLE GROUPS -015 THRU -W017, -020, -W020, -027 & -W027)

6. DASH NO DENDTES CABLE GROUP

Δ SLEEVE REQUIRED ON -003 THRU-W004 ONLY

Δ SLEEVE AND CRIMP SLEEVE ARE SUPPLIED LOOSE

3. COAXIAL STD .375 SIZE T00L CRIMP PATCH PLUG BOTH RCA/AT&T VERSIONS (.070/.090 PIN CONTACT DIA)

2. FINISH: TFS-1A (NICKEL)

1. ALL DIM ARE IN INCHES

8. EXAMPLE OF COMPLETE MODEL NO:
PL1WC-003 BR

BASIC MODEL NO Δ
PL1C = 50 OHM (.070)
PL1WC = 75 OHM (.090) DASH NO

RECOMMENDED
HEX CRIMP
SCALE: NONE

| 11-03 | QTY | DESCRIPTION | PART NUMBER | ITEM |
|-----------|----------------------|-------------|-------------|------|
| 11-02 | TOL UNLESS SPECIFIED | | | |
| 105-0998 | .XX ± | | | |
| 105-0972 | .XXX ± .030 | | | |
| 1-0319 | XXXX | | | |
| 1-0304 | ANGLE ± | | | |
| 1-0301 | ENGR | | | |
| NEXT ASSY | APPR | | | |

| | | | | | | | |
|-----------|------|-----|---------|-----------|--------------|-------------|-----|
| 1-0319 | DWN | DKC | 5-12-00 | MATERIAL | CODE IDENT | DRAWING NO. | REV |
| 1-0304 | CHK | | | | 14949 | 1-0453 | V |
| 1-0301 | ENGR | | | | | | |
| NEXT ASSY | APPR | | | SCALE 2/1 | DATE 4-30-79 | SHEET 1C | |