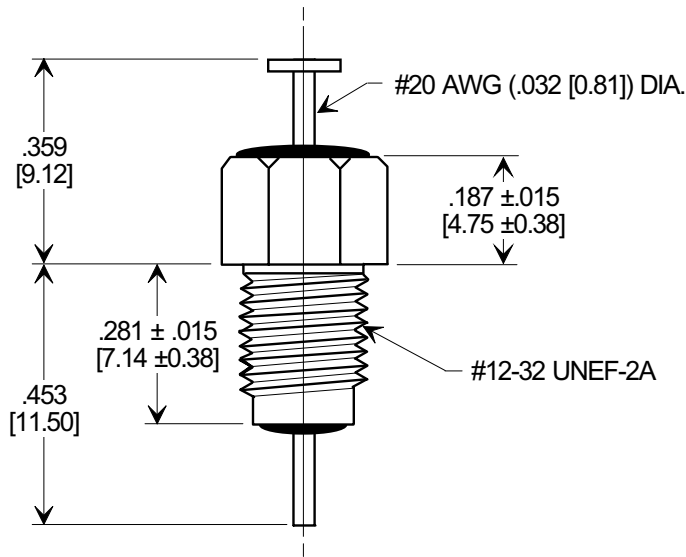
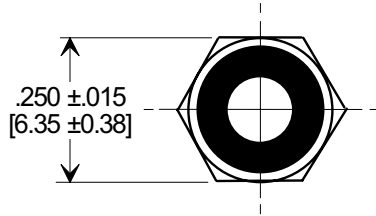
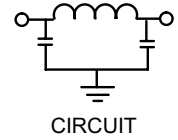
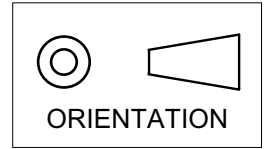


MARKETING SALES DRAWING

DIMENSIONS IN INCHES - DO NOT SCALE THIS DRAWING
 DIMENSIONS IN METRIC - []

Electrical Testing
 per Tusonix standard
 test plans and Mil-Std-202
 Test Methods.



1500	350	200	10A	5	45	70	70
	85°C	125 °C		10 MHz	100 MHz	1 GHz	10 GHz
MIN. CAP. (pF)	WORKING VOLTAGE (VDC)		CURRENT (Idc)	MINIMUM NO LOAD INSERTION LOSS (dB) AT 25°C PER MIL-STD -220			

X-2015 Rev-0 REVISION RECORD	0	Original Release C.O.	--TOLERANCES-- Unless Otherwise Specified DECIMAL ± .031 [0.79] ANGLES ±	Title		BUSHING STYLE EMI FILTER	
	1	WAS SK 6644-001-S. L.E. 01-13-84		Drawn	S.M. 02-02-01		Scale
	2	DIM'S & TOL'S REV'D RELEASED. S.M. 02-02-01		TUSONIX TUCSON, ARIZONA	Approved	T.C. 02-02-01	
	3	CURRENT UNIT "A" ADDED. L.E. 08-20-85			A	4202-001	
4	RDN TO COMP FMT & ADDED METRIC. S.M. 02-02-01	20010202-2-01					