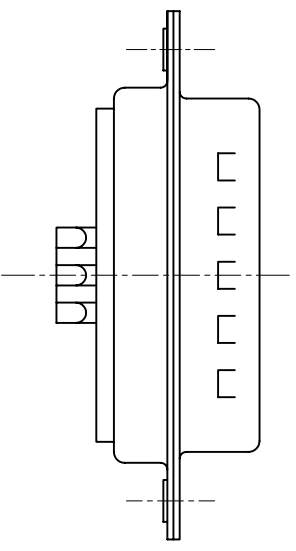
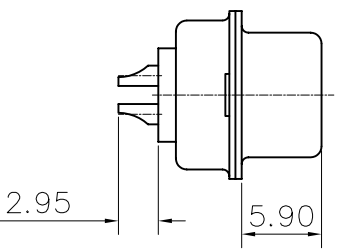
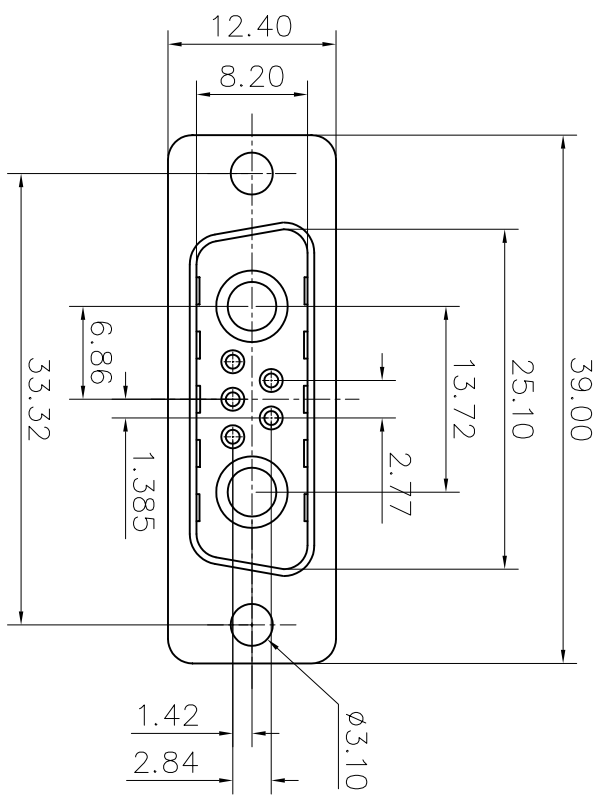


This document is the property of Amphenol Corporation and is loaned to you for your internal use only. It is not to be reproduced, stored in a retrieval system, or transmitted in any form or by any means, electronic, mechanical, photocopying, recording, or by any information storage and retrieval system, without the prior written permission of Amphenol Corporation. No part of this document may be reproduced or transmitted in any form or by any means, electronic, mechanical, photocopying, recording, or by any information storage and retrieval system, without the prior written permission of Amphenol Corporation. No part of this document may be reproduced or transmitted in any form or by any means, electronic, mechanical, photocopying, recording, or by any information storage and retrieval system, without the prior written permission of Amphenol Corporation.



REVISIONS			
REV	DESCRIPTION	DATE	APPROVED
A		05/31/07	

D-SUB TECHNICAL DATA

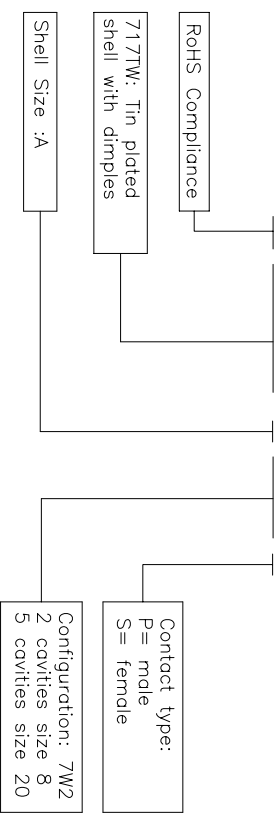
SHELL : Steel 2.5um(100u") min tin over 1.25um(50u") min nickel
 BODY : Glass filled thermoplastic.
 Flame retardant to UL94 V-0
 Color Black

CONTACT: brass, 0.4um (16u") gold over 1.25um(50u") min Nickel
 ELECTRICAL : Voltage rating 300 V RMS at 50 Hz
 Current rating 10 to 40A
 Withstanding Voltage >1000 V RMS at 50 Hz for one minute
 Insulation resistance >5000 M Ohms
 Contact resistance 20 mOhms max.
 CLIMATIC : Temperature range -55 °C up to 155°C
 Damp heat 56 days(40 °C-95% HR)

MARKING : Amphenol-...(Series No.)
 Commercial reference
 Manufacturing date

PRODUCT CODE

L 717TW A 7W2 P



UNLESS OTHERWISE SPECIFIED		APPROVAL		DATE	
U.S.	METRIC	DRAWN	Iss. #mg	6/30/07	6/30/07
T ±0.50	±0.20	CHECKED	14. using		
XX ±0.30	±0.20				
ANGLES ±0.20	2°				
FOR MATERIALS AND FINISHES SEE NOTES REMOVE SHARP EDGES					
DRAFTING FILE: PE master/drawing/Draw					
ANGLE OF PROJECTION					
TITLE: Hybrid connector, TW series					
Amphenol					
SIZE: A4					
DRAWING NO. L717TW.A7W2P					
SCALE: NONE					
SHEET 1 OF 1					

