

	HARTING Product Termination Notification	PTN
---	---	------------

Business Unit: HARTING Electric

PTN/22/019/C+N-US

PTN/22/018/C+N-US

PTN/22/017/C+N-US

Product Range: Current Sensors

Date: 07/11/2022

Title: Current Sensor Division Phase Out

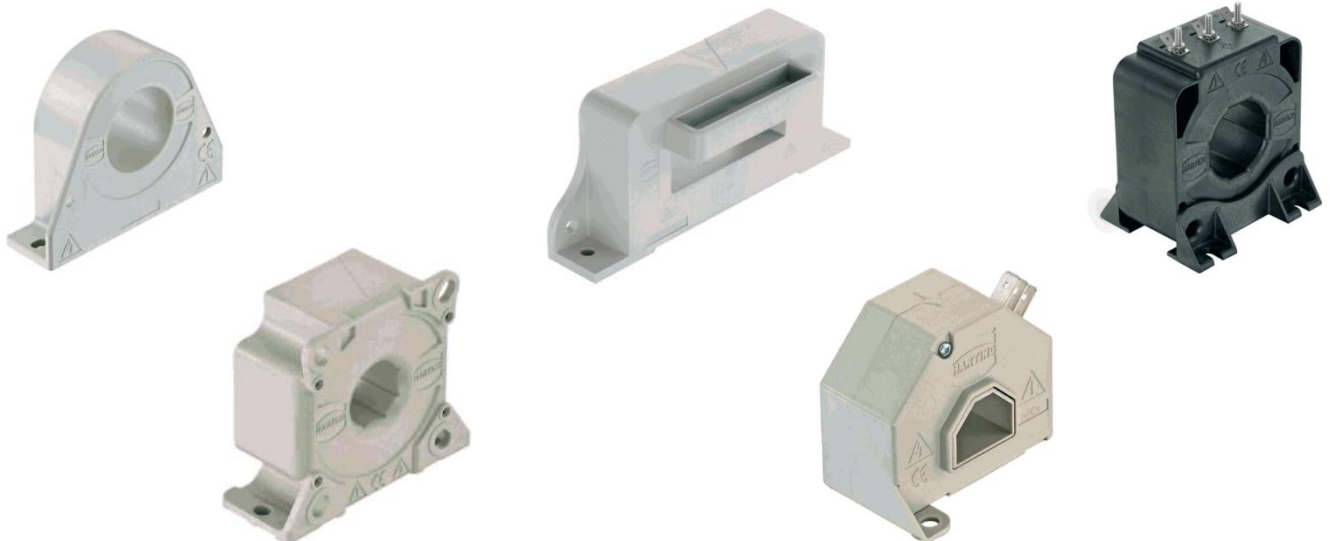
Dear Sir or Madam,

We, the HARTING Technology Group, perceive current sensors, and sensors in general, as key future technology.

Nevertheless, the market for panel mount current sensors has developed very dynamically in recent years and we have decided to discontinue the current sensor product portfolio. While we have not taken this decision lightly, we do not see any alternatives for various reasons.

We are aware of the fact that this decision will have an impact on your solutions that you have planned with our products. In acknowledgement of this situation, we will review incoming orders until August 5, 2022. However, due to the current supply chain situation, we reserve the right to refuse orders.

We appreciate your business and will work to support you in this transition. See below for details.



In case of questions or concerns, please do not hesitate to contact our technical support.

Technical Support E-mail: TechSupportUS@HARTING.com

Technical Support Phone Number: 866-278-0306 (Select option 3 for technical support)

 HARTING Pushing Performance	HARTING Product Termination Notification	PTN
--	---	------------

1. Concerned Part Numbers
20320100101 - Current Sensor HCME 100A-0-00-CDA-T
20320300101 - Current Sensor HCME 300A-0-00-CDA-T
20320500101 - Current Sensor HCME 500A-0-00-CDA-T
20320800101 - Current Sensor HCME 800A-0-00-CDA-T
20320500201 - Current Sensor HCME 500A-0-00-CPA-0
20320600201 - Current Sensor HCME 600A-0-00-CPA-0
20320850201 - Current Sensor HCME 850A-0-00-CPA-0
20321000201 - Current Sensor HCME 1000A-0-00-CPA-0
20321500201 - Current Sensor HCME 1500A-0-00-CPA-0
20322000201 - Current Sensor HCME 2000A-0-00-CPA-0
20322000401 - Current Sensor HCME 2000A-0-00-CDA-0-L
20322500201 - Current Sensor HCME 2500A-0-00-CPA-0
20310100301 - Current Sensor HCM 100A-0-10-CEA-TS
20310200301 - Current Sensor HCM 200A-0-20-CFA-T-S
20310209301 - Current Sensor HCMR 200A-0-20-CEA-T-G
20311008104 - Current Sensor HCMR 1000A-S-50-CTA-A
20310200101 - Current Sensor HCM 200A-0-20-CAA-0
20310200102 - Current Sensor HCM 200A-0-20-CCA-T
20310300101 - Current Sensor HCM 300A-0-20-CCA-T
20310300301 - Current Sensor HCM 300A-0-20-CFA-T-S
20310300302 - Current Sensor HCM 300A-0-20-SB4-0
20310300303 - Current Sensor HCM 300A-0-20-CRA-0
20310500101 - Current Sensor HCM 500A-0-50-CCA-T
20310500103 - Current Sensor HCM 500A-0-50-CGA-0-C
20310500104 - Current Sensor HCM 500A-0-50-SB4-0
20310500107 - Current Sensor HCM 500A-0-50-CPB-0
20310507101 - Current Sensor HCM 500A-0-50-CGA-0-K
20310508101 - Current Sensor HCMR 500A-S-40-SB5-NF
20310509101 - Current Sensor HCMR 500A-S-40-SB5-N
20310509102 - Current Sensor HCMR 500A-S-40-SBA-0-D
20311000101 - Current Sensor HCM 1000A-0-50-CCA-T
20311000103 - Current Sensor HCM 1000A-0-50-CPB-0
20311008101 - Current Sensor HCMR 1000A-S-50-SB5-NF
20311008102 - Current Sensor HCMR 1000A-0-30-CGA-FE

In case of questions or concerns, please do not hesitate to contact our technical support.

Technical Support E-mail: TechSupportUS@HARTING.com

Technical Support Phone Number: 866-278-0306 (Select option 3 for technical support)

	HARTING Product Termination Notification	PTN
---	---	------------

- 20311008105 - Current Sensor HCMR 1000A-0-40-SB4-F
- 20311009101 - Current Sensor HCMR 1000A-S-50-SB5-N
- 20311009104 - Current Sensor HCMR 1000A-S-40-SBA-0-D
- 20311009107 - Current Sensor HCMR 1000A-S-40-SB5-0
- 20311009108 - Current Sensor HCMR 1000A-S-50-CPB-0-I
- 20311308101 - Current Sensor HCMR 1300A-S-40-SB5-NF
- 20312000101 - Current Sensor HCM 2000A-0-50-CCA-T
- 20312000103 - Current Sensor HCM 2000A-0-40-CEA-T
- 20312000105 - Current Sensor HCM 2000A-0-50-CRA-0
- 20312009101 - Current Sensor HCMR 2000A-S-50-SB5-N
- 20312009104 - Current Sensor HCMR 2000A-S-50-SS5-0-D
- 20312009105 - Current Sensor HCMR 2000A-S-40-COA-0
- 20314000101 - Current transformer 142 x 45mm, 4000/5 A
- 20320017101 - AC Current Transformer 10A
- 20325000101 - Current transformer 5000/5A
- 20325000102 - Current transformer 5000/5A calibrated
- 20327000101 - Current transformer 230 x 55mm, 7000/5 A

2. Scheduled Date of Implementation

Customer orders must be received by August 5, 2022, we reserve the right to refuse orders. Final shipments will be arranged on an individual basis- each request will be evaluated based on material availability.

In case of questions or concerns, please do not hesitate to contact our technical support.

Technical Support E-mail: TechSupportUS@HARTING.com

Technical Support Phone Number: 866-278-0306 (Select option 3 for technical support)