

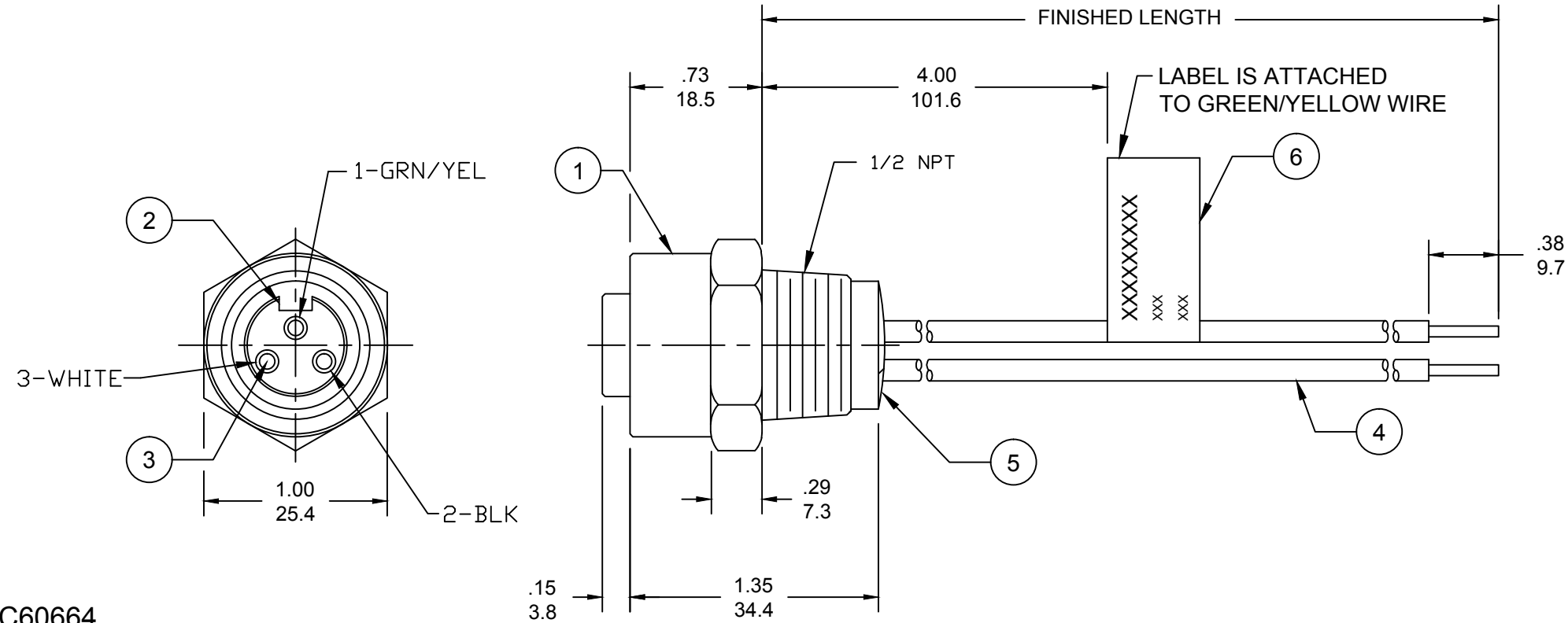
PART NUMBER	ENGINEERING NUMBER	FINISH LENGTH
1300660035	1R3000A28M005G	1.64' [0.5M]
1300660036	1R3000A28M010G	3.28' [1M]
1300660037	1R3000A28M015G	4.92' [1.5M]

PART NUMBER LEGEND

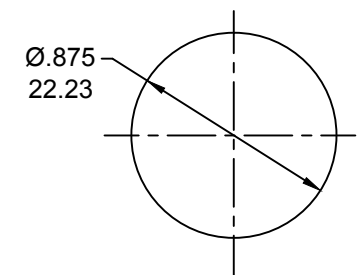
1R3000A28M005G

FINISHED LENGTH:
M005= 0.5 METER
M010= 1 METER
M100= 10 METER

CABLE LENGTH TOLERANCES	
>.3M [1FT]:	+19mm-0 [+0.75in-0]
.3 - .9M [1 - 3FT]:	+44.5mm-0 [+1.75in-0]
.9 - 1.8M [3 - 6FT]:	+55.6mm-0 [+2.19in-0]
1.8 - 3.7M [6 - 12FT]:	+88.9mm-0 [+3.50in-0]
3.7 - 7.3M [12 - 24FT]:	+165.1mm-0 [+6.50in-0]
7.3-14.6M [24 - 48FT]:	+317.5mm-0 [+12.50in-0]
14.6 - 30.5M [48-100FT]:	+622.3mm-0 [+24.50in-0]
OVER 30M [100FT]	+2% OF FINISHED LENGTH



- NOTES:
1. MATERIAL: AS NOTED
 2. FINISH: AS NOTED
 3. ELECTRICAL:
VOLTAGE: 500V PER IEC60664
600V PER UL2237
CURRENT: 15A
 4. TEMP RATING: -20°TO +90°C
 5. PROTECTION: IP67 (WHEN MATED)
 6. COUPLING THREAD: 7/8-16UN
 7. UL LISTED FILE: E258922
 8. ALL DIMS ARE FOR REFERENCE UNLESS NOTED OTHERWISE



ITEM	DESCRIPTION	MATERIAL	FINISH
6	FLAG LABEL	VINYL	BLACK/YELLOW
5	POTTING MATERIAL	EPDOXY	BLACK
4	WIRE, 14 AWG, UL 1015 (B)	PVC INSULATION	SEE FACE VIEW
3	CONTACT SOCKET	COPPER ALLOY	GOLD PLATED
2	FEMALE INSERT	PVC	BLACK
1	RECEPTACLE SHELL	ZINC DIE-CAST	NICKEL PLATE

UL 1015 WAS THHN
EC NO: IPG2019-0320
DRWN: JCAPPOZZ 2019/01/02
CHKD: RSTONE 2019/01/02
APPR: BWOODMAN 2017/01/26

QUALITY SYMBOLS	GENERAL TOLERANCES (UNLESS SPECIFIED)		DIMENSION STYLE		SCALE	DESIGN UNITS	THIRD ANGLE PROJECTION
	mm	INCH	INCH/MM				
▽=0 ∇=0	4 PLACES	±---	±---	DRAWN BY	DATE	MINI-CHANGE RECEPTACLE FEMALE 3P, 14 AWG 1/2 NPT, AC COLOR MOLLEX MOLEX INCORPORATED	DOCUMENT NO. SD-130066-075 SHEET NO. 1 OF 1
	3 PLACES	±---	±---	CHECKED BY	DATE		
	2 PLACES	±---	±---	APPROVED BY	DATE		
	1 PLACE	±---	±---	BWOODMAN	2017/01/26		
ANGULAR ±---°				MATERIAL NO.		SEE P/N CHART	
DRAFT WHERE APPLICABLE MUST REMAIN WITHIN DIMENSIONS				SIZE		THIS DRAWING CONTAINS INFORMATION THAT IS PROPRIETARY TO MOLEX INCORPORATED AND SHOULD NOT BE USED WITHOUT WRITTEN PERMISSION	