



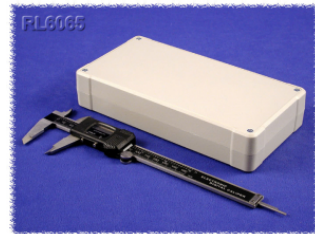
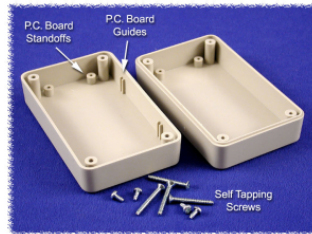
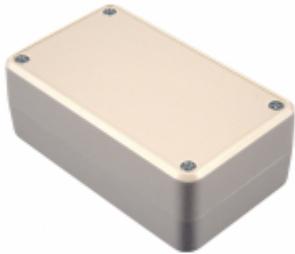
Quality Products. Service Excellence.

# ABS Plastic Project Enclosures *RL Series*

Deep Lid

### Key Features:

- Designed to house P.C. boards for hand-held use.
- Molded in light grey or black general purpose ABS plastic with a light texture (material carries a UL flammability rating of UL94 HB).
- Two-part, snap action clam shell construction. Both halves include smooth recessed area for membrane, label or silkscreen.
- P.C. board standoffs are molded into both halves of the enclosure (see photo tables for details). Four short M3 screws included.
- P.C. board guides molded into top half.
- Designed to meet IP54.
- Includes four M3 assembly screws.



Ask About  
Enclosure  
Modification  
Services



Click to enlarge features.

Bottom View

Top View

Part Number	Color	Length	Width	Depth (Assembled)
RL6015BK	Black	4.09	2.56	1.57
RL6015	Grey	4.09	2.56	1.57
RL6035BK	Black	5.67	2.56	1.57
RL6035	Grey	5.67	2.56	1.57
RL6055BK	Black	7.01	4.13	1.57
RL6055	Grey	7.01	4.13	1.57
RL6065BK	Black	8.07	4.13	1.57
RL6065	Grey	8.07	4.13	1.57

Tags: deep lid, flanged, black, ABS, plastic, PCB, board, project box

Data subject to change without notice

© 2023. Hammond Manufacturing Ltd. All rights reserved.