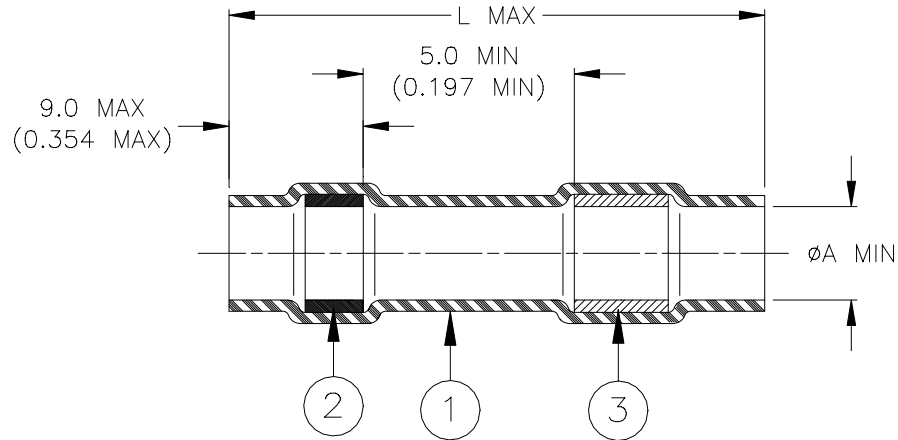


## SPECIFICATION CONTROL DRAWING



Product Revision		Product Dimensions		Wire and Pin Dimensions		
Part Name	C	L max	$\phi A$ min	$\phi B$ max	$\phi C$	
		min	max	min	max	
CWT-1505	C	29.3 (1.154)	4.5 (0.175)	4.0 (0.160)	2.3 (0.090)	4.0 (0.160)

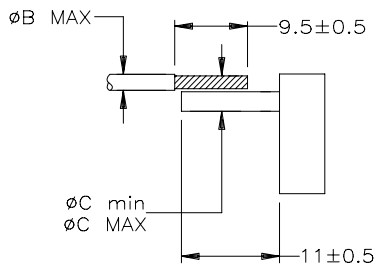
### MATERIALS

- INSULATION SLEEVE: Radiation cross-linked modified polyolefin. Transparent clear.
- SOLDER PREFORM WITH FLUX:  
SOLDER: TYPE Cd18 per ANSI J-STD-006.  
FLUX: TYPE ROM1 per ANSI J-STD-004.
- MELTABLE RING: Thermally stabilized thermoplastic. Color: blue.

### APPLICATION

- This controlled soldering device is designed for termination of a wire to the lead of electrical component or to the terminal of a connector.
- Temperature range: -55°C to +125°C.
- For installation procedure and application equipment consult RPIP-824-00 or H54286.

For best results, prepare the wire as shown:



<b>tyco</b> Electronics		<b>Raychem</b> Tyco Electronics Corporation 300 Constitutional Drive Menlo Park, CA 94025 USA		TITLE : <b>SOLDERSLEEVE ONE STEP WIRE TERMINATOR</b>				
Unless otherwise specified dimensions are in millimeters. Inches dimensions are in between brackets.				DOCUMENT NO.: <b>CWT-1505</b>				
TOLERANCES: 0.00 N/A 0.0 N/A 0 N/A		ANGLES: N/A ROUGHNESS IN MICRON		Tyco Electronics reserves the right to amend this drawing at any time. Users should evaluate the suitability of the product for their application.		DATE: 4-Mar-02		DOC ISSUE: 8
DRAWN BY: M. FORONDA		CAGE CODE: 06090	REPLACES: D010510	DCR NUMBER: D020077	PROD. REV.: SEE TABLE	SCALE: None	SIZE: A	SHEET: 1 of 1

If this document is printed it becomes uncontrolled. Check with the web for the latest revision.