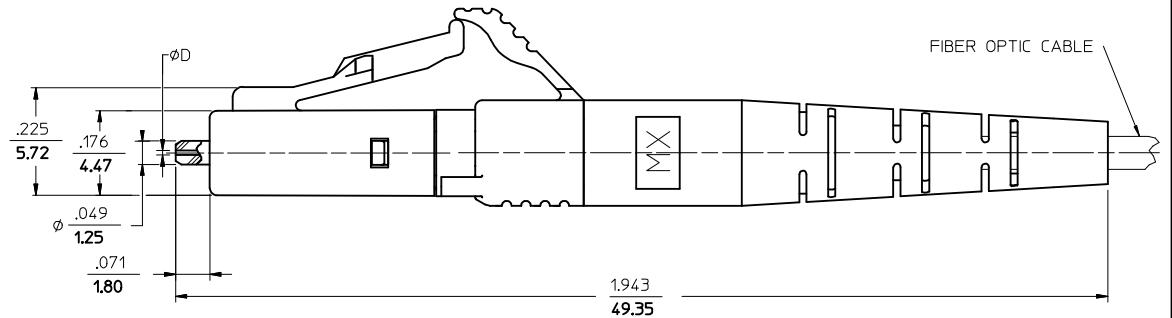
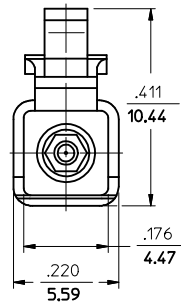


CONNECTOR P/N	ØD (4m)	BOOT COLOR	CABLE DESCRIPTION & Ø (mm)	CABLE TYPE
106024-2000	125.50	WHITE	SIMPLEX 1.6	SINGLE MODE
106024-2300			SIMPLEX 2.0	
			ZIPCORD 1.6	
106024-3000	127.00		SIMPLEX 1.6	MULTIMODE
106024-3300			SIMPLEX 2.0	
106024-3310*			ZIPCORD 1.6	
106024-3320				
106024-3390	125.00		SIMPLEX 1.6	SINGLE MODE
106024-4000			SIMPLEX 2.0	
106024-4300			ZIPCORD 1.6	
106024-430*	126.00		SIMPLEX 1.6	SINGLE MODE
106024-5000			SIMPLEX 2.0	
106024-5310*		ZIPCORD 1.6		
106024-6000	125.25	SIMPLEX 1.6	SINGLE MODE	
106024-6300		SIMPLEX 2.0		
		ZIPCORD 1.6		
106090-4250	125.10-125.50	SIMPLEX 1.6		SINGLE MODE
106090-4260		SIMPLEX 2.0		
106090-4270	125.51-125.90	ZIPCORD 1.6		SINGLE MODE
106090-4280		SIMPLEX 1.6		
106090-2900	125.50	SIMPLEX 2.0		SINGLE MODE
106090-2930		ZIPCORD 1.6		
		SIMPLEX 1.6		
106090-4100	125.00	SIMPLEX 2.0		SINGLE MODE
106090-4130		ZIPCORD 1.6		
		SIMPLEX 1.6		
106090-6100	125.25	SIMPLEX 2.0	SINGLE MODE	
106090-6130		ZIPCORD 1.6		
106090-6110	125.25	SIMPLEX 1.6	SINGLE MODE	
106090-6135		SIMPLEX 2.0		
106024-3100	126.00		SIMPLEX 2.0	MULTIMODE
			ZIPCORD 1.6	MULTIMODE



NOTES:

- DUST CAPS ARE NOT SHOWN BUT INCLUDED.
- P/N 106024-4301, 106024-3310 AND 106024-5310 ARE BULK PACKED.

ENTER DESCRIPTION EC NO: MF2013-0244 DRW: DRWINKPEVZNER 2012/10/29 CHKD: LGJMIN 2012/10/31 APPR: LGJMIN	QUALITY SYMBOLS ▽=0 ▽=0	GENERAL TOLERANCES (UNLESS SPECIFIED) <table border="1"> <thead> <tr> <th></th> <th>mm</th> <th>INCH</th> </tr> </thead> <tbody> <tr> <td>4 PLACES</td> <td>± .005</td> <td>± .0004</td> </tr> <tr> <td>3 PLACES</td> <td>± .004</td> <td>± .0003</td> </tr> <tr> <td>2 PLACES</td> <td>± .003</td> <td>± .0002</td> </tr> <tr> <td>1 PLACE</td> <td>± .002</td> <td>± .0001</td> </tr> <tr> <td>0 PLACE</td> <td>± .001</td> <td>± .0000</td> </tr> </tbody> </table>		mm	INCH	4 PLACES	± .005	± .0004	3 PLACES	± .004	± .0003	2 PLACES	± .003	± .0002	1 PLACE	± .002	± .0001	0 PLACE	± .001	± .0000	DIMENSION STYLE IN/MM	SCALE 4:1	DESIGN UNITS INCH	THIRD ANGLE PROJECTION
		mm	INCH																					
	4 PLACES	± .005	± .0004																					
	3 PLACES	± .004	± .0003																					
2 PLACES	± .003	± .0002																						
1 PLACE	± .002	± .0001																						
0 PLACE	± .001	± .0000																						
DRAFT WHERE APPLICABLE MUST REMAIN WITHIN DIMENSIONS		MATERIAL NO. SEE TABLE	DRAWN BY PGIBLIN	DATE 2005.09.01	LC CONNECTOR																			
ANGULAR ±1/2°		DOCUMENT NO. SD-1060RR-RRRR	CHECKED BY DATE	APPROVED BY DATE																				
A3	REV	SIZE C	THIS DRAWING CONTAINS INFORMATION THAT IS PROPRIETARY TO MOLEX INCORPORATED AND SHOULD NOT BE USED WITHOUT WRITTEN PERMISSION																					