



# Kontaktstift $\varnothing 2$ mm

**Einsatzbereich:** - 923 Einbaudosen  
- 923 Winkeleinbaudosen

**TE Teile Nr.:** 61-0194-011-000  
**IC Ref. Nr.:** 61.194.11

## Elektrische Werte

Bemessungsstrom max. 5 A\*  
Durchgangswiderstand < 3 mOhm

## Werkstoff

Kontakt Messing, vergoldet

## Anschluss

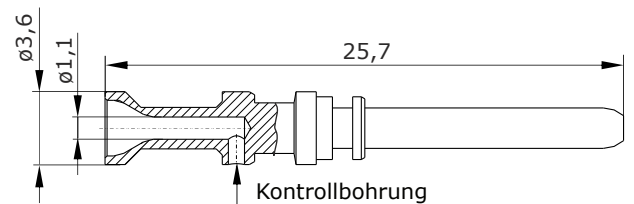
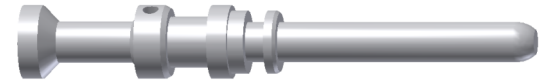
Anschlussart/-bereich Crimp/ 0,10 - 0,50 mm<sup>2</sup>  
max. Litzenaußendurchmesser  $\varnothing 3,6$  mm  
Abisolierlänge 7 mm  
Crimpeinstellungen sind individuell zu wählen

## Mechanische Werte

Steckzyklen 500

## Werkzeuge (nicht im Lieferumfang enthalten)

digitale Crimpzange	TE Teile Nr.: C0-0236-000-000 IC Ref. Nr.: C0.236.00
analoge Crimpzange	TE Teile Nr.: C0-0201-000-000 IC Ref. Nr.: C0.201.00
Positioniereinsatz für 2 mm Kontakte	TE Teile Nr.: C0-0004-000-000 IC Ref. Nr.: C0.004.00
Crimpen - kraftunterstützt	
Crimpmaschine	TE Teile Nr.: WA-1672-000-000 IC Ref. Nr.: WA10672
digitaler Crimpeinsatz, mittel	TE Teile Nr.: C0-0373-000-000 IC Ref. Nr.: C0.373.00



## Hauptabmessungen

Kontaktstift





# Contact Pin $\varnothing 2$ mm

for: - 923 Receptacle  
- 923 Receptacle Angled

TE part number: 61-0194-011-000  
IC reference number.: 61.194.11

### Electrical Data

rated current max. 5 A\*  
contact resistance < 3 mOhm

### Material

contact brass, gold plated

### Termination

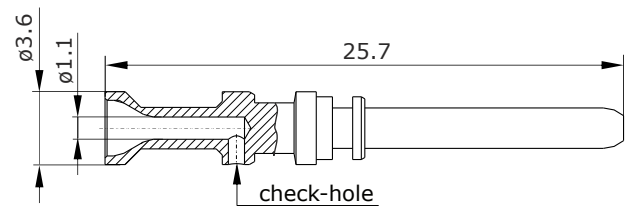
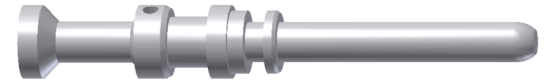
cross-section crimp/ 0.10 - 0.50 mm<sup>2</sup>  
max. outer wire diameter  $\varnothing 3.6$  mm  
stripping length 7 mm  
crimp settings select individually

### Mechanical Data

mating cycles 500

### Tools (not part of product contents)

digital crimping tool	TE part no.: C0-0236-000-000 IC ref. no.: C0.236.00
analog crimping tool	TE part no.: C0-0201-000-000 IC ref. no.: C0.201.00
positoning insert for 2mm contacts	TE part no.: C0-0004-000-000 IC ref. no.: C0.004.00
power crimping	
crimping machine	TE part no.: WA-1672-000-000 IC ref. no.: WA10672
digital crimp insert, medium	TE part no.: C0-0373-000-000 IC ref. no.: C0.373.00



**Main Dimensions**  
contact pin

Y6-C833-000-0EN issued: 08.06.2011/MH; modified: 12.02.2020/VK

© 2020 TE Connectivity

TE Connectivity, TE connectivity (logo), intercontec (logo) and speedtec are trademarks.

While TE Connectivity (TE) has made every reasonable effort to ensure the accuracy of the information in this presentation, TE does not guarantee that it is error-free, nor does TE make any other representation, warranty or guarantee that the information is accurate, correct, reliable or current. TE reserves the right to make any adjustments to the information contained herein at any time without notice. TE expressly disclaims all implied warranties regarding the information contained herein, including, but not limited to, any implied warranties of merchantability or fitness for a particular purpose. The dimensions in this article are for reference purposes only and are subject to change without notice. Specifications are subject to change without notice. Consult TE for the latest dimensions and design specifications.

TE Connectivity Industrial GmbH  
Bernrieder Straße 15  
94559 Niederwinkling, Germany  
+49 9962 2002 - 0  
[intercontec@te.com](mailto:intercontec@te.com)  
[www.intercontec.biz](http://www.intercontec.biz)



\* for max. wire cross-section