

# STRAIGHT PLUG FEAMLE

### WIRING DIAGRAM M12 FEMALE:

3 WIRES

VIEW FROM FRONT SIDE

Pin	Wire color
1	Brown
2	-
3	Blue
4	Black

4 WIRES

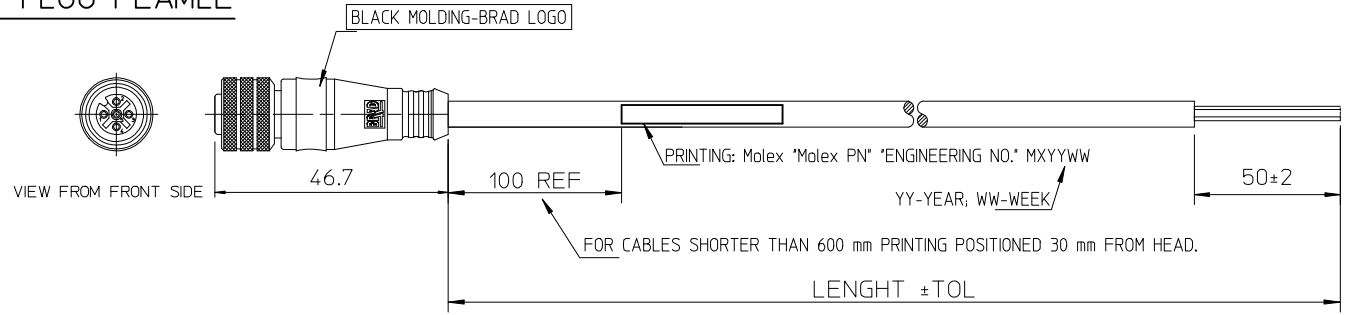
VIEW FROM FRONT SIDE

Pin	Wire color
1	Brown
2	White
3	Blue
4	Black

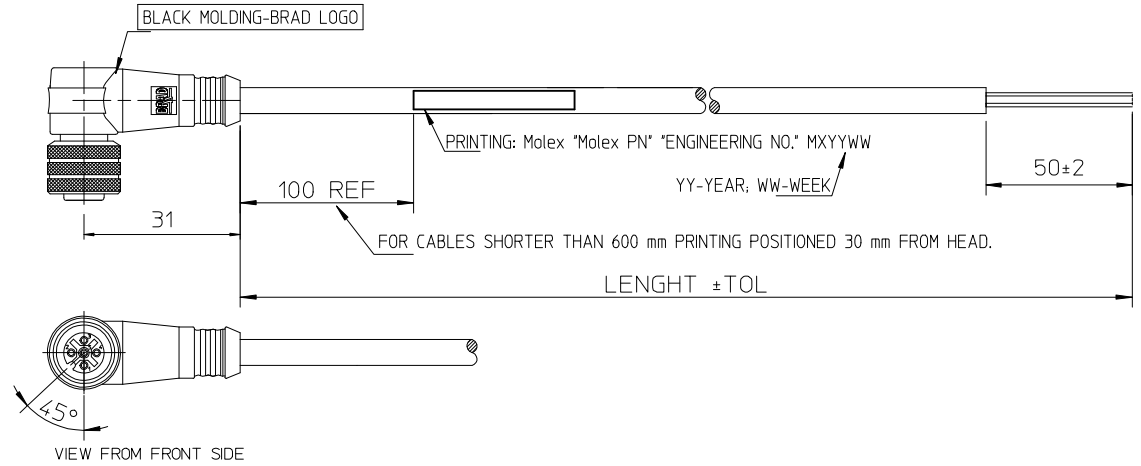
5 WIRES

VIEW FROM FRONT SIDE

Pin	Wire color
1	Brown
2	White
3	Blue
4	Black
5	Grey



# 90° - PLUG



### ENGINEERING P/N KEY DECODING:

0	8	1	2	-	0	X	X	K	F	-	X	X	X	0	0
OVERMOULDED M12 FAMILY					NUMBER OF POLES		TYPE OF CONNECTOR		FEMALE CONNECTOR		LENGTH		TYPE OF CABLE		
					03-3 POLES 04-4 POLES 05-5 POLES		1-STRAIGHT 2-90°				01 = 1m 02 = 2m 05 = 5m 15 = 15m 20 = 20m 90 = 90m		91 = 0.6m 92 = 0.3m 93 = 2.5m 94 = 3.5m 95 = 7.5m		
											1 = PVC BLACK 0.25mm² 2 = PUR/PVC BLACK 0.25mm² F = PUR BLACK 0.5mm² S = PUR BLACK 0.34mm² D = PUR BLACK 22AWG UL				

TABLE OF TOLERANCES						
CABLE LENGTH IN METER	TILL/DO	OVER - TILL	OVER - TILL	OVER	OVER	OVER
	1m	1-5m	5-10m	10m	20m	30m
MANUFACTURING TOLERANCES MM						
M8/M12 CABLE CONNECTOR MALE OR FEMALE	+20 -10	+25	+30	+30	+50	+60
M8/M12 CABLE CONNECTOR JUMPERCABLE	+20 -10	+25	+30	+30	+50	+60
M23 CABLE CONNECTOR MALE OR FEMALE			+50	+50	+50	+60
M23 CABLE CONNECTOR JUMPERCABLE			+50	+50	+50	+60

<p><b>PRINTING UPDATE</b></p> <p>EC NO: IPG2015-1471</p> <p>DRWN: JMARSZALEK 2013/09/25</p> <p>CHKD: MSZWAJKOWSKI 2013/09/25</p> <p>APPR: MIWASIECZKO 2015/03/20</p>	<p>QUALITY SYMBOLS</p> <p>▽=0</p> <p>◻=0</p>	GENERAL TOLERANCES (UNLESS SPECIFIED)		DIMENSION STYLE <b>MM ONLY</b>		SCALE ---		DESIGN UNITS <b>METRIC</b>		FIRST ANGLE PROJECTION		
				mm	INCH	DRAWN BY HWALCZAK	DATE 2012/05/10	TITLE <b>CSE M12 XP AC FE XM SE</b>				
						CHECKED BY	DATE					
						APPROVED BY MDYSZEWSKA	DATE 2012/05/28					
		ANGULAR ±---°		MATERIAL NO.		DOCUMENT NO.		SHEET NO.				
		DRAFT WHERE APPLICABLE MUST REMAIN WITHIN DIMENSIONS		SEE KEY		SD-120065-053		1 OF 1				
				SIZE A3		THIS DRAWING CONTAINS INFORMATION THAT IS PROPRIETARY TO MOLEX INCORPORATED AND SHOULD NOT BE USED WITHOUT WRITTEN PERMISSION						