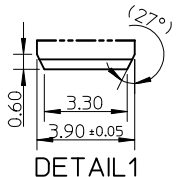
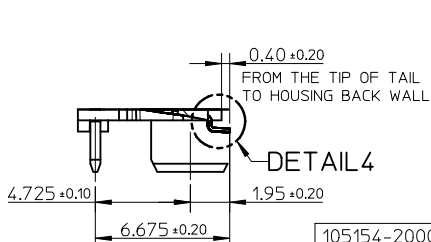
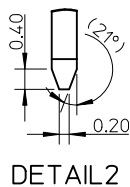
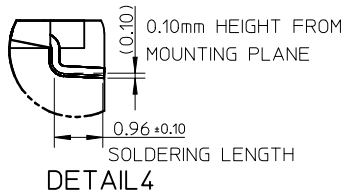
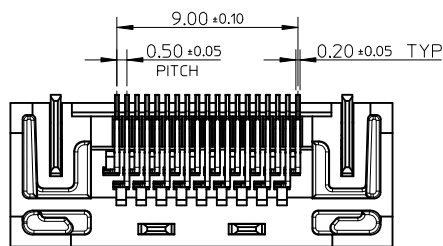
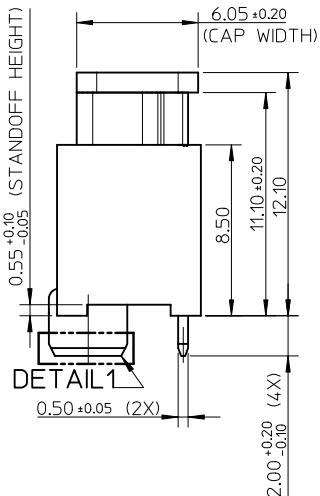
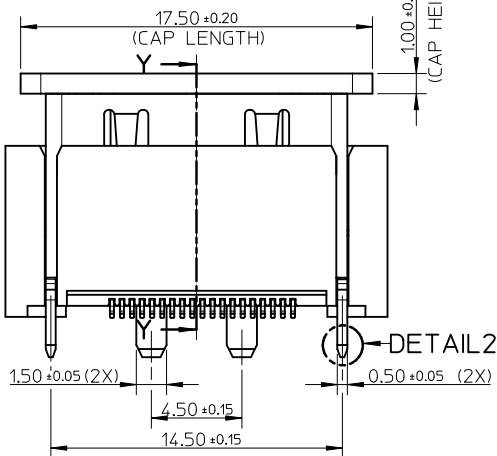


RECOMMENDED PCB LAYOUT (CONNECTOR SIDE)
THICKNESS=1.20mm, GENERAL TOLERANCE: ±0.05

NOTES:

- MATERIAL:
HOUSING/COVER: LCP. COLOR: BLACK.
SHELL: BRASS.
TERMINAL: BRASS.
- PLATING:
TERMINAL: CONTACT AREA: 0.127 MICROMETRE GOLD FLASH.
SOLDER AREA: 3 MICROMETRE MIN. TIN-BISMUTH ALLOY PLATED.
UNDER PLATE: 1.27 MICROMETRE MIN. NICKEL.
SHELL: 3 MICROMETRE MIN. MATTE TIN PLATING OVER
1.27 MICROMETRE NICKEL PLATING OVERALL.
- COPLANARITY: 0.10mm MAX (BEFORE AND AFTER REFLOW).
- DATE CODE: "YYMMDDA", "YY" REPRESENTS YEAR; "MM" REPRESENTS MONTH; "DD" REPRESENTS DAY; "A" REPRESENTS SHIFT.
- PRODUCT SPECIFICATION REFER TO PS-105153-001.
- PACKAGE SPECIFICATION REFER TO TABLE.
- PRODUCT COMPLIANT TO RoHS DIRECTIVE 2002/95/EC AND ELV DIRECTIVE 2000/53/EC.



105154-2000	PK-105154-001 (TRAY)
105154-1000	PK-105154-999 (T&R)
PART NUMBER	PACKING SPEC

NEW RELEASE EC NO: S2012-0855 DRWN: JESSIECHUA 2012/06/06 CHKD: CWANG25 2011/08/22 APPR: SHONG 2012/06/27	QUALITY SYMBOLS	GENERAL TOLERANCES (UNLESS SPECIFIED)	DIMENSION STYLE	SCALE	DESIGN UNITS	THIRD ANGLE PROJECTION
	DESCRIPTION		MM ONLY	NTS	METRIC	
	REV	DESCRIPTION				
	A					

4 PLACES	± ---	± ---	DRAWN BY	DATE	TITLE
3 PLACES	± ---	± ---	JESSIECHUA	2012/06/06	HDMI RECEPTACLE VERTICAL SMT TYPE WITHOUT FLANGE
2 PLACES	± 0.20	± ---	CHECKED BY	DATE	
1 PLACE	± 0.30	± ---	CWANG	2012/06/06	MOLEX INCORPORATED
ANGULAR ± 2 °			APPROVED BY	DATE	
DRAFT WHERE APPLICABLE MUST REMAIN WITHIN DIMENSIONS			SHONG	2012/06/27	SD-105154-200
			MATERIAL NO.	DOCUMENT NO.	SHEET NO.
			SEE TABLE		1 OF 1

THIS DRAWING CONTAINS INFORMATION THAT IS PROPRIETARY TO MOLEX INCORPORATED AND SHOULD NOT BE USED WITHOUT WRITTEN PERMISSION