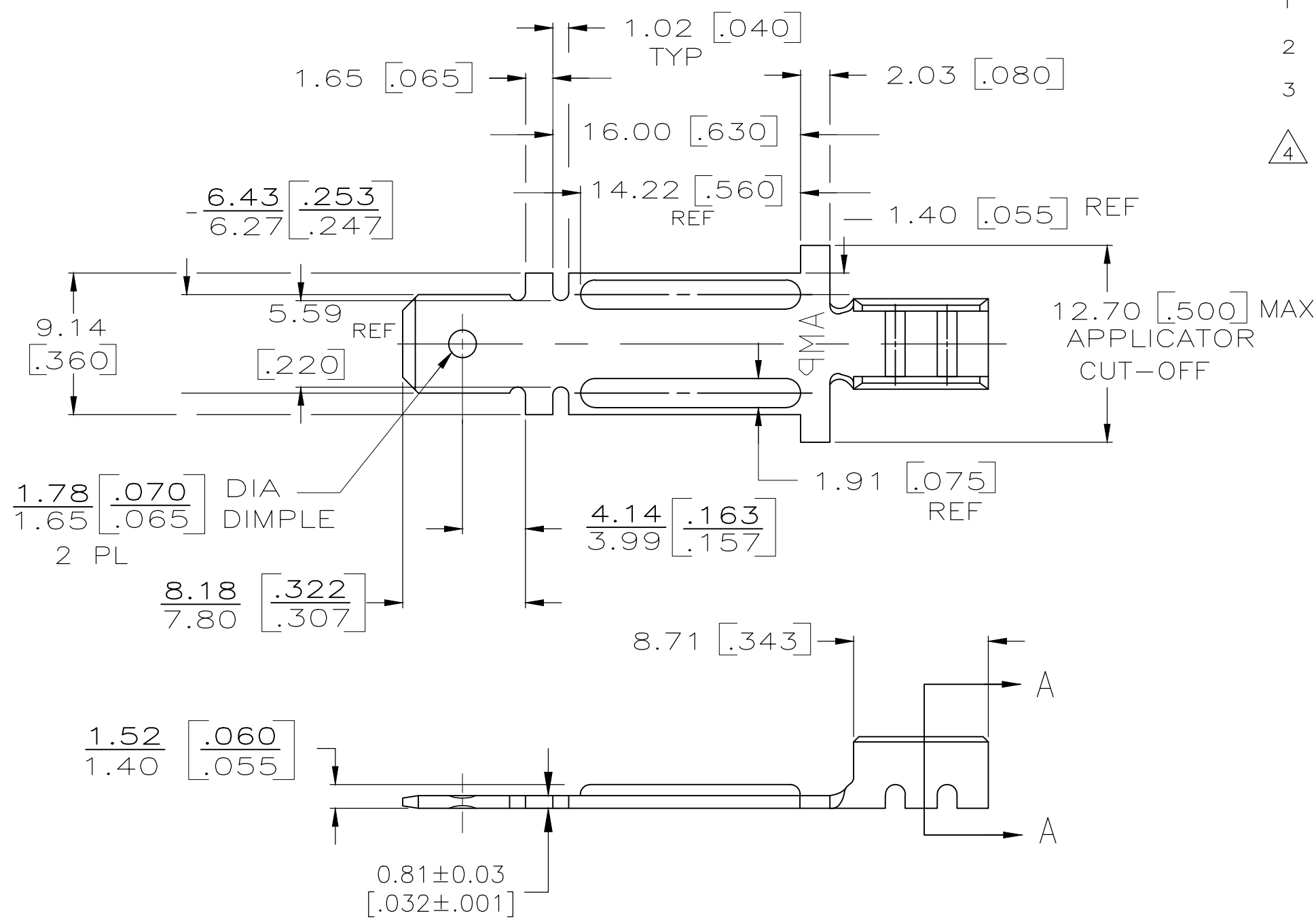
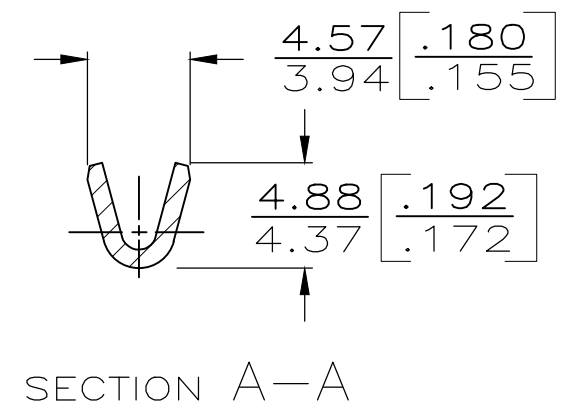


THIS DRAWING IS UNPUBLISHED. RELEASED FOR PUBLICATION  
 © COPYRIGHT - TE Connectivity ALL RIGHTS RESERVED.

REVISIONS				
P	LTR	DESCRIPTION	DATE	APVD
E3		REVISED PER ECR-20-015240	02NOV2020	BDA DH



- 1 CONTINUOUS STRIP ON REELS.
- 2 WIRE SIZE IS 0.30-1.45MM DIA [22-15]
- 3 SEE SHEET 2 FOR SUGGESTED LOCKING IN CERAMIC.
- △ 4 REVERSE REELING OF 63301-1



NICKEL PLATE	STEEL	△ 4 63301-3
NICKEL PLATE	STEEL	63301-1
FINISH	MATERIAL	PART NUMBER

THIS DRAWING IS A CONTROLLED DOCUMENT.		DWN	JR RUTH	5/9/86	<b>STE</b> TE Connectivity		
DIMENSIONS: mm [INCHES]		CHK	G YETTER	5/20/86			
TOLERANCES UNLESS OTHERWISE SPECIFIED:		APVD	C MEYERS	5/20/86	NAME		
0 PLC ± -		PRODUCT SPEC		.250 TAB FOR NI-CHROME WIRE			
1 PLC ± -		APPLICATION SPEC		RESTRICTED TO			
2 PLC ± -		SIZE	A3	CAGE CODE	00779	DRAWING NO	C-63301
3 PLC ± 0.25 [.010]		WEIGHT		SCALE			NTS
4 PLC ± -		CUSTOMER DRAWING		SHEET		1 OF 1	REV
ANGLES ± -		SEE TABLE		REV		E3	
MATERIAL		SEE TABLE					