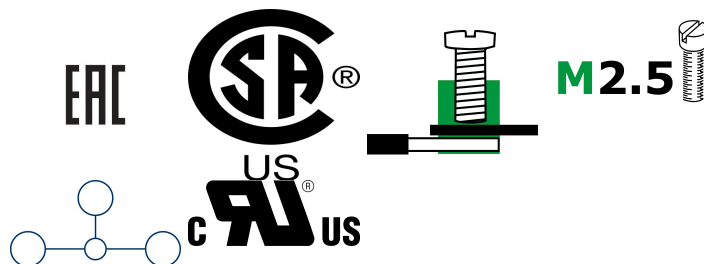
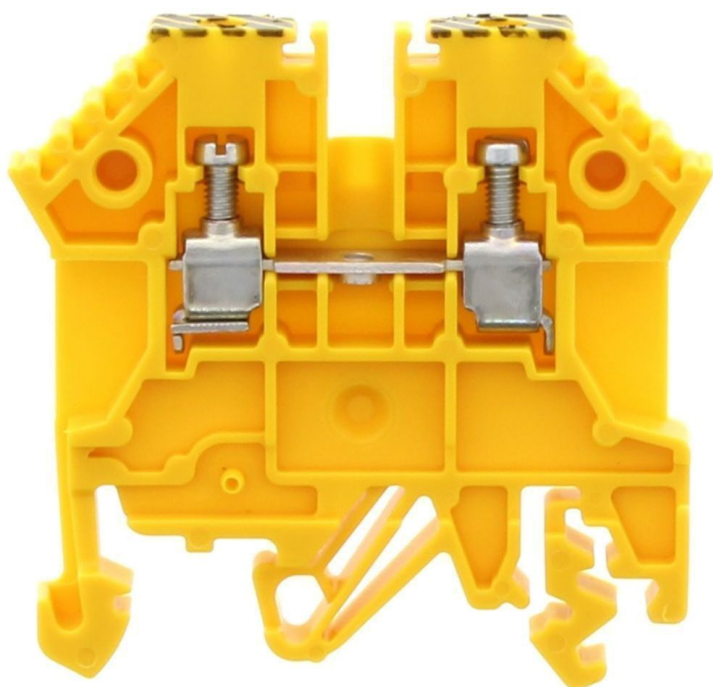


1562.2

RK 2,5/PE BKYE



Feed-through terminal, Screw connection, Mounting type: Mounting rail TS 35/7.5 and TS 32, Rated cross-section: 25 mm², Width: 5 mm, Colour: Black-yellow

Business data

Packaging unit	100
Quantity unit	PC
Weight per piece (not including packaging)	6.6 g
Weight per piece (including packaging)	7.1 g
Unit of weight	G
Customs number	85369010
Country of origin	DE
Product description	Feed-through terminal

1562.2

RK 2,5/PE BKYE

Technical data

Dimensions

Length	48 mm
Width	5 mm
Height TS 35/7.5	47 mm
Height TS 32	51.5 mm

Ratings

Rated voltage	800 V
Rated current	24 A
Rated cross-section	25 mm ²
Rated impulse voltage	8 kV
Overvoltage category	III
Contamination degree	3
Maximum power dissipation for nominal condition	0.77 W

Technical data

Connection data

Connection principle	Screw connection
Connection position	Lateral
Connections	2
Number of terminals per level	2
Number of levels	1
Wire cross-section single-core (rigid) / stranded, min.	2 mm ²
Wire cross-section single core (rigid)/stranded, max.	4 mm ²
Wire cross-section stranded, min.	2 mm ²
Wire cross-section stranded, max.	4 mm ²
Wire cross-section stranded with wire-end ferrules, min.	2 mm ²
Wire cross-section stranded with wire-end ferrules, max.	25 mm ²
Wire cross-section AWG, min.	22
Wire cross-section AWG, max.	12
Stripping length	7 mm
Screw head	Slotted
Screw threading	M 2,5
Tightening torque, min.	4 Nm
Tightening torque, max.	8 Nm

Materials

Insulation housing	Polyamide 6.6
Flammability class UL 94	V-2
Working temperature, min.	-40 °C
Working temperature, max.	105 °C

Further technical data

Mounting type	Mounting rail TS 35/7.5 and TS 32
Gauge plug acc. to EN 60 947-1	A3
Number of cross-connection channels	1
End plate required	✓
Number of test pick-off options	1

Data sheet



1562.2

RK 2,5/PE BKYE

Technical data

Print

Colour	Black-yellow
--------	--------------

Environmental Product Compliance

REACH Conform	yes
---------------	-----

REACH Reference date	2021-07-08
----------------------	------------

REACH Candidate Substance Note	No
--------------------------------	----

RoHS Conform	yes
--------------	-----

1562.2

RK 2,5/PE BKYE

Approvals

CSAus approval

CSAus File Number	042110_0_000
CSAus approval	UL 1059
CSAus approval granted	yes

UL Recognized

UL File Number	E95701
UL approval	UL 1059
UL Usegroup B: rated voltage	600 V
UL Usegroup B: rated current	20 A
UL Usegroup C: rated voltage	600 V
UL Usegroup C: rated current	20 A
UL wire cross-section single-core (rigid) AWG, min.	22
UL wire cross-section single-core (rigid) AWG, max.	12
UL wire cross-section stranded AWG, min.	22
UL wire cross-section stranded AWG, max.	12
UL torque	5.3 Lb In
UL wire material	Cu
UL factory wiring	yes
UL field wiring	yes
UL Recognized	yes

1562.2

RK 2,5/PE BKYE

Approvals

cUL Recognized

cUL File Number	E95701
cUL approval	C22.2 No 158
cUL Usegroup B: rated voltage	600 V
cUL Usegroup B: rated current	20 A
cUL Usegroup C: rated voltage	600 V
cUL Usegroup C: rated current	20 A
cUL wire cross-section single-core (rigid) AWG, min.	22
cUL wire cross-section single-core (rigid) AWG, max.	12
cUL wire cross-section stranded AWG, min.	22
cUL wire cross-section stranded AWG, max.	12
cUL torque	5.3 Nm
cUL wire material	Cu
cUL Recognized	yes

Standards and regulations

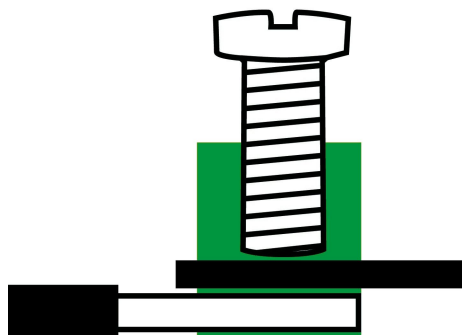
EAC approval	TR ZU 004/2011
EAC approval granted	yes

1562.2

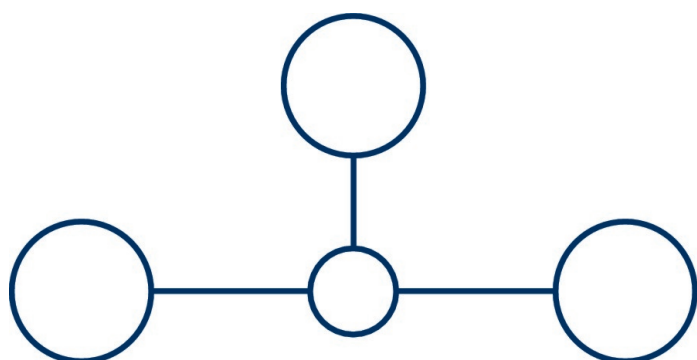
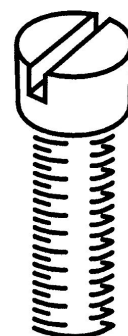
RK 2,5/PE BKYE

Media

EAC



M 2.5



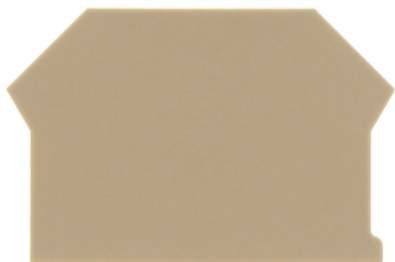
CRA[®] US

1562.2

RK 2,5/PE BKYE

Accessories

End plate

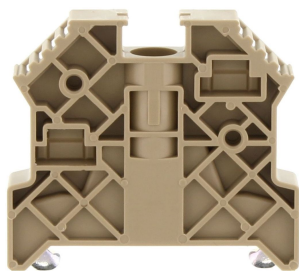


End plate, Width: 1.5 mm, Colour: Beige

General order data

Product number:	Article name	GTIN (EAN)	Packaging unit
2001.2	AP 2,5-10 BG	4044211047979	500 ST

End stop



End stop, Mounting type: Mounting rail TS 35/7.5, Width: 9.5 mm, Colour: Beige

General order data

Product number:	Article name	GTIN (EAN)	Packaging unit
2828.0	ES 35/K/ST BG	4044211055547	500 ST

1562.2

RK 2,5/PE BKYE

Accessories

Cross-connector



Cross-connector, No. of poles: 4, Mounting type: Can be screwed on, Width: 19.3 mm, Rated cross-section: 2.5 mm², Colour: natural

General order data

Product number:	Article name	GTIN (EAN)	Packaging unit
2569.0	Q 4	4044211053598	500 ST



Cross-connector, No. of poles: 10, Mounting type: Can be screwed on, Width: 49.9 mm, Rated cross-section: 2.5 mm², Colour: natural

General order data

Product number:	Article name	GTIN (EAN)	Packaging unit
2570.0	Q 10	4044211053604	500 ST



Cross-connector, No. of poles: 3, Mounting type: Can be screwed on, Width: 14.2 mm, Rated cross-section: 2.5 mm², Colour: natural

General order data

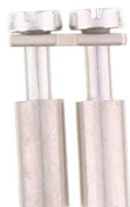
Product number:	Article name	Creation date 25.11.2021 08:13:01 Subject to technical changes	GTIN (EAN)	Packaging unit
2568.0	Q 3		4044211053581	500 ST ⁹

1562.2

RK 2,5/PE BKYE

Accessories

Cross-connector

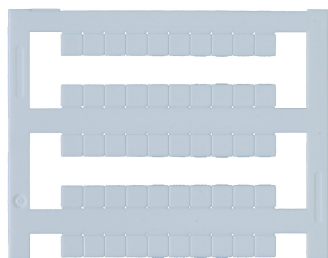


Cross-connector, No. of poles: 2, Mounting type: Can be screwed on, Width: 9.1 mm, Rated cross-section: 2.5 mm², Colour: natural

General order data

Product number:	Article name	GTIN (EAN)	Packaging unit
2567.0	Q 2	4044211053574	500 ST

Quick marking



Terminal marker / Pocket Maxicard, Length: 5 mm, Width: 5 mm, Colour: White

General order data

Product number:	Article name	GTIN (EAN)	Packaging unit
4600.7	PMC SB 5/50 WH	4044211088903	500 ST

1562.2

RK 2,5/PE BKYE

Accessories

Screwdriver



Screwdriver with bare blade, Colour: Black-grey

General order data

Product number:	Article name	GTIN (EAN)	Packaging unit
1085.0	SDB 0,5x3,0	4044211014643	500 ST

Test adapters



Test adapter, Length: 37.3 mm, Pitch size: 5 mm, Colour: Beige

General order data

Product number:	Article name	GTIN (EAN)	Packaging unit
2812.0	TA 5/1/ST	4044211055394	500 ST

1562.2

RK 2,5/PE BKYE

Accessories

Insulation plate

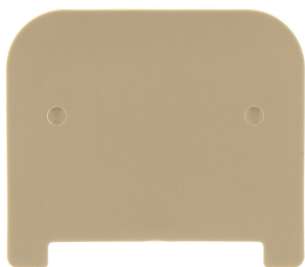


Insulation plate, Colour: Beige

General order data

Product number:	Article name	GTIN (EAN)	Packaging unit
2566.2	TRS 3 BG	4044211053567	500 ST

Partition plate



Partition plate, Width: 1.5 mm, Colour: Beige

General order data

Product number:	Article name	GTIN (EAN)	Packaging unit
2002.2	TW 2,5-10 BG	4044211048044	500 ST
