



## Main

Range of Product	Modicon ABE7
Product or Component Type	Solid state output relay sub-base
[Us] rated supply voltage	24 V DC PLC end 24 V DC preactuator end
Number of Channels	16
Number of terminal per channel	2
Relay Type	Soldered solid state relay

## Complementary

Terminal block type	Removable
Isolation PLC/operative part	No
Fixing mode	By clips 35 mm symmetrical DIN rail) By screws solid plate with fixing kit)
Current state 0 guaranteed	0.4 mA PLC end)
Voltage state 0 guaranteed	3.4 V PLC end
Current state 1 guaranteed	3.1 mA PLC end)
Voltage state 1 guaranteed	16.9 V PLC end
Maximum current per output common	8 A
Current per channel	0.5 A preactuator end
Minimum switching current	1 mA
Drop-out voltage	0.6 V preactuator end)
Maximum switching current	500 mA DC-12 500 mA DC-13
Maximum tungsten load	<10 W DC-6
Maximum residual current	0.3 mA preactuator end
Fault type	Overload Short-circuit
Fault indication	Yes
Switchable inductive energy L/R	<= 400(U.I) ms
Maximum circuit breaker threshold	0.75 A
Response time	<= 0.02 ms from state 1 to 0 <= 0.1 ms from state 0 to 1
Switching frequency	< 0.6/LI <sup>2</sup> Hz
Installation category	II IEC 60664-1
Tightening torque	5.31 lbf.in (0.6 N.m) flat Ø 3.5 mm
Width	8.11 in (206 mm)
Net Weight	0.89 lb(US) (0.405 kg)

The information provided in this documentation contains general descriptions and/or technical characteristics of the performance of the products contained herein. This documentation is not intended as a substitute for and is not to be used for determining suitability or reliability of these products for specific user applications. It is the duty of any such user or integrator to perform the appropriate and complete risk analysis, evaluation and testing of the products with respect to the relevant specific application or use thereof. Neither Schneider Electric Industries SAS nor any of its affiliates or subsidiaries shall be responsible or liable for misuse of the information contained herein.

## Environment

Product Certifications	UL GL CSA LROS (Lloyds register of shipping) BV DNV EAC
IP degree of protection	IP2x conforming to IEC 60529
Protective treatment	TC
Resistance to incandescent wire	1382 °F (750 °C) 30 s IEC 60695-2-11
Shock resistance	15 gn 11 ms IEC 60068-2-27
Resistance to radiated fields	9.14 V/m (10 V/m) 26000000...1000000000 Hz)IEC 61000-4-3 level 3
Resistance to fast transients	2 kV level 3 IEC 61000-4-4
Ambient air temperature for operation	23...140 °F (-5...60 °C) IEC 61131-2
Ambient air temperature for storage	-40...176 °F (-40...80 °C) IEC 61131-2
Pollution degree	2 IEC 60664-1

## Ordering and shipping details

Category	22375 - INTERFACE MODULE(ABA,R,S)
Discount Schedule	CP2
GTIN	3389110546293
Nbr. of units in pkg.	1
Package weight(Lbs)	16.08 oz (456 g)
Returnability	No
Country of origin	LV

## Packing Units

Unit Type of Package 1	PCE
Package 1 Height	2.76 in (7 cm)
Package 1 width	3.23 in (8.2 cm)
Package 1 Length	8.27 in (21 cm)
Unit Type of Package 2	S03
Number of Units in Package 2	16
Package 2 Weight	17.57 lb(US) (7.971 kg)
Package 2 Height	11.81 in (30 cm)
Package 2 width	11.81 in (30 cm)
Package 2 Length	15.75 in (40 cm)

## Offer Sustainability

Sustainable offer status	Green Premium product
California proposition 65	WARNING: This product can expose you to chemicals including: Lead and lead compounds, which is known to the State of California to cause cancer and birth defects or other reproductive harm. For more information go to <a href="http://www.P65Warnings.ca.gov">www.P65Warnings.ca.gov</a>
REACH Regulation	<a href="#">REACH Declaration</a>
REACH free of SVHC	Yes
EU RoHS Directive	Pro-active compliance (Product out of EU RoHS legal scope) <a href="#">EU RoHS Declaration</a>
Mercury free	Yes
RoHS exemption information	<a href="#">Yes</a>
China RoHS Regulation	<a href="#">China RoHS Declaration</a>
Environmental Disclosure	<a href="#">Product Environmental Profile</a>

---

Circularity Profile

 [End Of Life Information](#)

---

WEEE

The product must be disposed on European Union markets following specific waste collection and never end up in rubbish bins.

---

### Contractual warranty

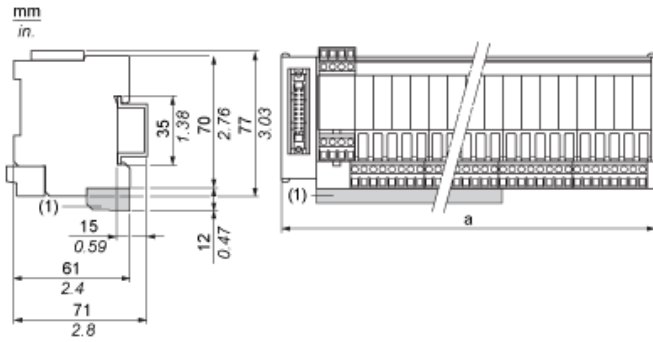
---

Warranty

18 months

---

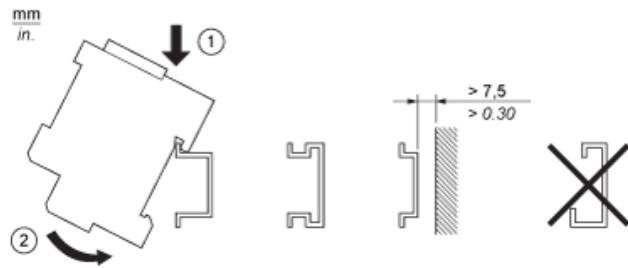
Dimensions



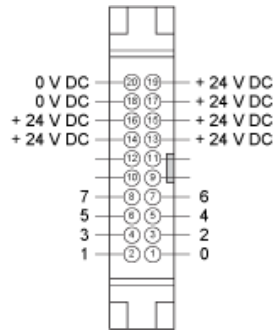
(1) ABE7BV20 / ABE7BV20E

ABE7	a in mm	a in in.
S08S2B0 / S08S2B0E	125	4.92
S08S2B1 / S08S2B1E	206	8.11
S16S2B0 / S16S2B0E	206	8.11

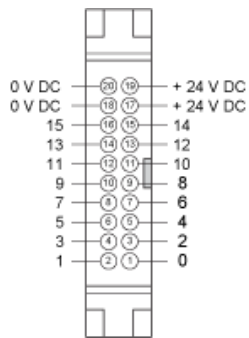
Mounting



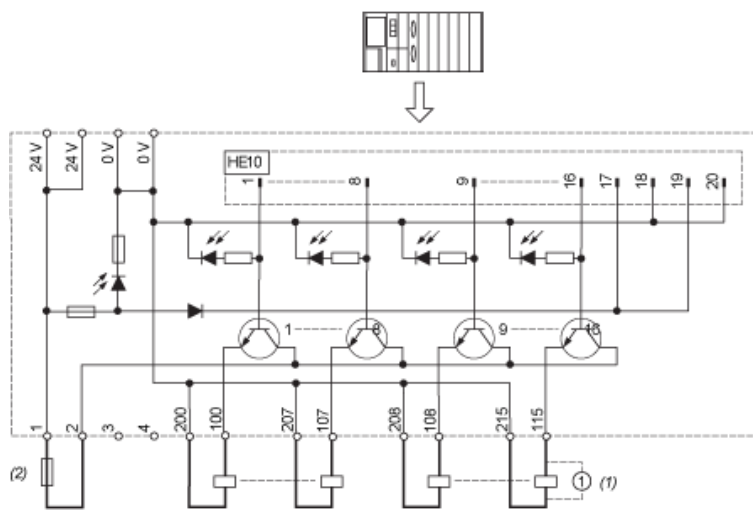
HE10 8 Channels



HE10 16 Channels



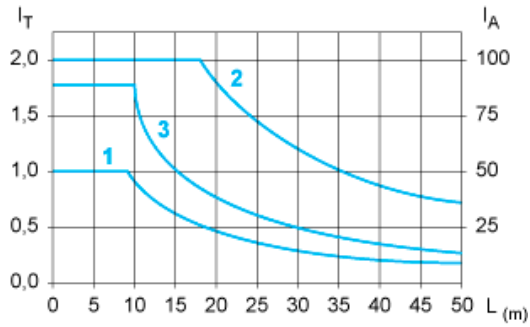
Wiring Diagram



- (1) Inductive load
- (2) AB1FUSE435U5X + quick acting FUSE 5 x 20 type F.

Curves for Determining Cable Type and Length According to the Current

16-channel Sub-base



L Cable length

I<sub>T</sub> Total current per sub base (A)

I<sub>A</sub> Average current per channel (mA)

(1) TSXCDP••2 and ABFH20H••0 cables with c.s.a. 0.08 mm<sup>2</sup> (AWG 28).

(2) TSXCDP••3 cables with c.s.a. 0.34 mm<sup>2</sup> (AWG 22).

(3) Cables with c.s.a. 0.13 mm<sup>2</sup> (AWG 26).

The curves are given for a voltage drop of 1 V in the cable. For n volts tolerance, multiply the length determined from the graph by n.