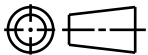
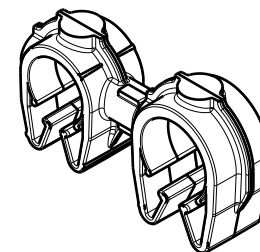
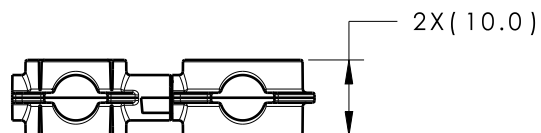


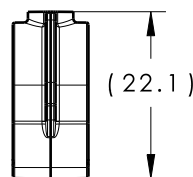
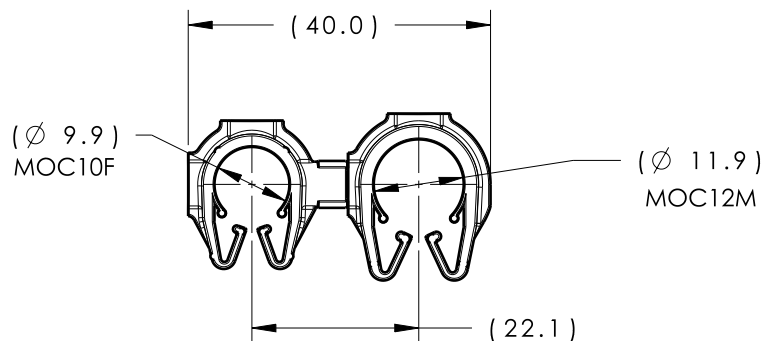
CATIA V5



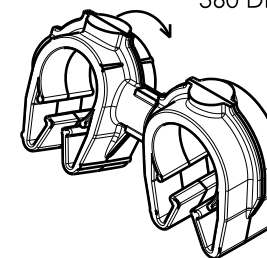
Revision Level			Revision Record	Changed	Date	Approved	Date
Drawing	State	Part					
02.1	Design Release		SEE ECN# 014632	TAT	9/6/18	EJH	9/6/18



ISOMETRIC VIEW



CLIPS ROTATE 360 DEGREES



ISOMETRIC VIEW ROTATED

TYPE	MOC10F	MOC12M
HARNESS	10.0MM-11.5MM	11.5MM-13.0MM
HOSE	9.5MM-11.5MM	10.5MM-13.0MM
HARD PIPE/TUBE	10.0MM-11.5MM	12.0MM-13.8MM

*RECOMMENDED SIZES MAY DIFFER DEPENDING ON THE APPLICATION, PRODUCT REQUIREMENTS AND MATERIALS USED



GLOBAL PART DESCRIPTION	MOC10F			MOC12M		
	DRAWING	MATERIAL	COLOR	DRAWING	MATERIAL	COLOR
MOC10FMOC12M-PA66HIRHSUV-BK	16-0318-000-CSU	PA66HIRHSUV	BLACK	16-0319-000-CSU	PA66HIRHSUV	BLACK

Material SEE CHART COLOR: SEE CHART	Units	millimeters	The copyright of this drawing is reserved by HellermannTyton. It is issued on condition that it is not reproduced, copied or disclosed to a third party, either wholly or in part, without the consent of HellermannTyton.	Drawn	TAT	2/22/17	Article/Type-No	MOC10FMOC12M		Scale	1:1	
	Tolerance defined on each dimension	<p>PRODUCTION : Phase</p> <p>16-0326-333-CSU</p>		Approved	EJH	2/28/17		Title	10MM MOC COUPLED TO A 12MM MOC		Project Number	16-0326
				<p>HellermannTyton</p> <p>North America Email: corp@htamericas.com Web: www.hellermann.tyton.com</p>			Drawing-No		16-0326-333-CSU		Format	AH
							Sheet		1/1			