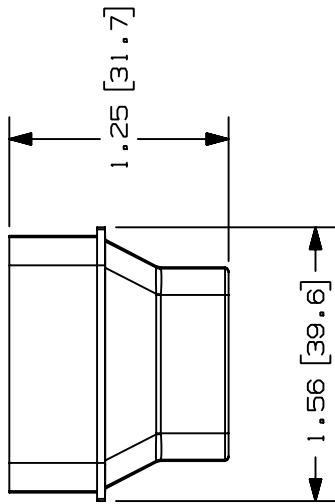
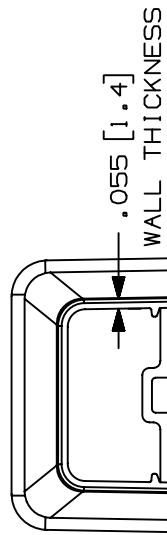
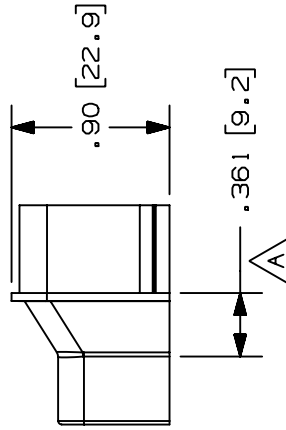
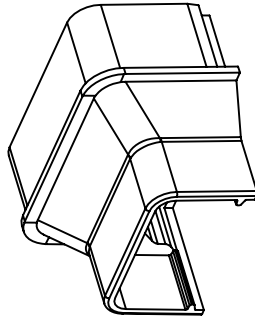


THIS COPY IS PROVIDED ON A RESTRICTED BASIS AND IS NOT TO BE USED IN ANY WAY DETRIMENTAL TO THE INTERESTS OF PANDUIT CORP.

PANDUIT P/N	WEIGHT
RFX105-X	.098 LB/10 PCS. (44.5 G/10 PCS.)



- NOTES:
- SEE CURRENT CATALOG FOR ADDITIONAL PART SUFFIXES TO INDICATE COLOR AND OR PACKAGE QUANTITY.
 - FOR USE IN POWER CABLING APPLICATIONS UP TO 600V OR FOR CATEGORY 5, FIBER OPTIC AND OTHER LOW VOLTAGE APPLICATIONS REQUIRING TAMPER-RESISTANCE.
 - DIMENSIONS IN PARENTHESIS ARE IN METRIC.



CAO FILENAME/LAYERS D35541CZ_RFX105_C_01A.PRT

PANDUIT
REDUCER FITTING (RFX105-X)
CUSTOMER DRAWING

UNLESS OTHERWISE SPECIFIED,
DIMENSIONAL TOLERANCES ARE:
(.X) ± .XXX) ± .010(.3)
(.XX) ± .3(.8) ANGLES ±

UNLESS OTHERWISE SPECIFIED,
ALL DIMENSIONS ARE GIVEN
IN INCHES, THIRD ANGLE PROJECTION.

DRAWN BY PM
DATE 10-15-96
CHK'D CEF

SCALE FULL

DRAWING NO.

35541-52
A
SIZE

ABS/
POLYCARBONATE



SUP

CUST

R

ECN

DESCRIPTION

2	08-11-97	RABO	HIW	B. CORRECTED DRAWING NUMBER MISTAKE MADE ON REVISION 1	35541-52	HIW	HIW	
1	07-31-97	RABO	HIW	A. ADDED DIMENSION .361 (9.2)	35541-52	HIW	HIW	
R	10-15-96	RABO	CEF	RELEASED TO PRODUCTION	35541-52	CEF	CEF	
REV	DATE	BY	CHK	DESCRIPTION	ECN	R	CUST	SUP