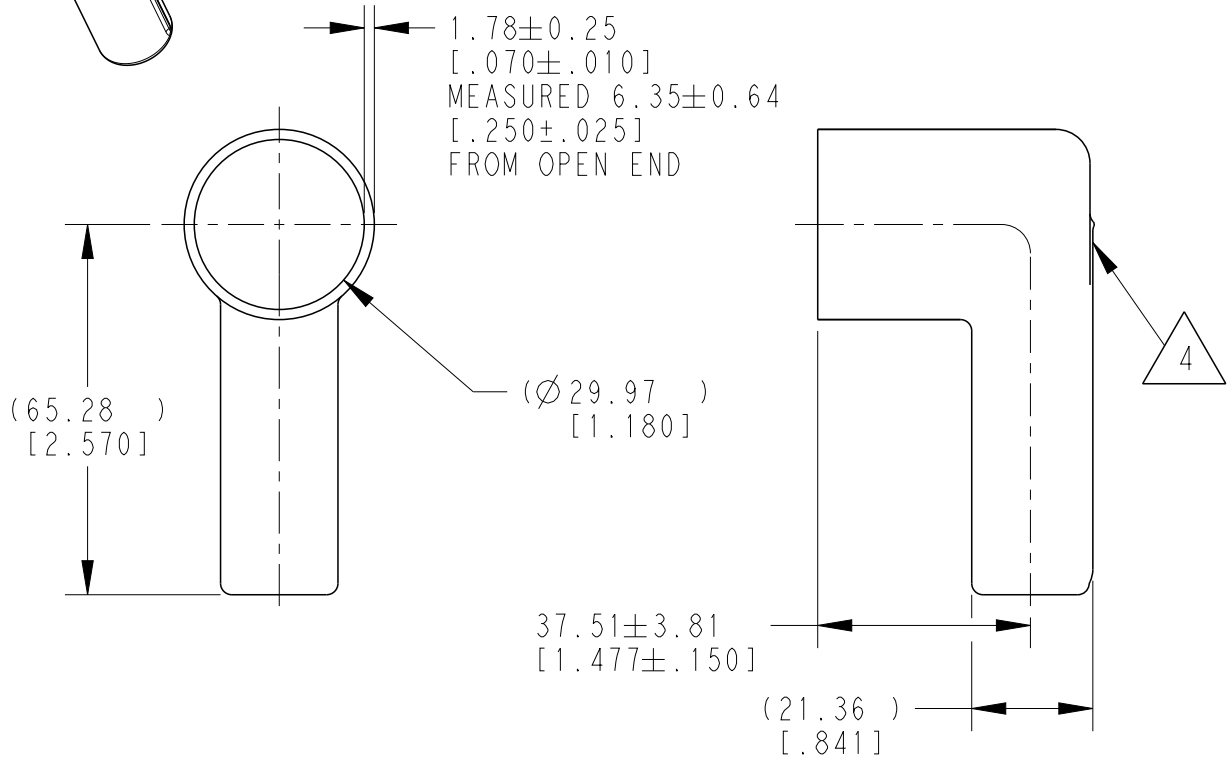
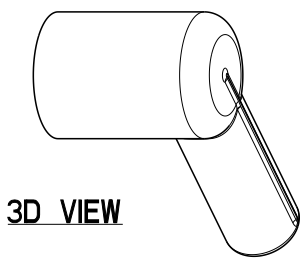


REVISIONS				
P	LTR	DESCRIPTION	DATE	APVD
	A	NEW RELEASE PER ECO-14-013276	27AUG2014	DM DM
	A1	REVISE PER PCN E-19-014486	16SEP2019	JA IG
	A2	REVISED PER PCN E-20-006190	28APR2020	AP IG



5. SMALL NON-FILLS ARE ACCEPTABLE INSIDE PART, INCLUDING SUPPLIER MARKING.
4. SMALL MATERIAL EXTENSION IS ACCEPTABLE ON THIS END ALL AROUND. WALL THICKNESS ON THIS END MAY VARY.
3. THIS ACCESSORY PART IS PROVIDED WITHOUT TYPICAL TRANSPORTATION INDUSTRY PROCESS CONTROLS. NO VALIDATION TESTING HAS BEEN PERFORMED. CUSTOMER IS RESPONSIBLE FOR DETERMINING PRODUCT PERFORMANCE AND SUITABILITY FOR APPLICATION.
2. TEMPERATURE RATING: -29°C TO +100°C [-20°F TO +212°F].
1. THIS PART IS USED ON  
HDP24-18-XXX RECEPTACLES  
HDP26-18-XXX PLUGS  
HD34-18-XXX RECEPTACLES  
HD36-18-XXX PLUGS  
WHERE XXX IS PIN ARRANGEMENTS.

TE INTERNAL PN	DEUTSCH PN
HD30-18BT-90-BK	HD30-18BT-90-BK

NOTES:

2019  
 RELEASED FOR PUBLICATION  
 ALL RIGHTS RESERVED.  
 BY TE CONNECTIVITY  
 COPYRIGHT 2014  
 THIS DRAWING IS UNPUBLISHED.

DIMENSIONS: mm [INCHES]	DWN D.MEYER	27AUG2014	MATERIAL PVC	FINISH BLACK
	CHK I. GRANTCHAROVA	27AUG2014	TE Connectivity	
TOLERANCES UNLESS OTHERWISE SPECIFIED: 0 PLC ± 1 PLC ± 2 PLC ± 3 PLC ±0.63 [.025] 4 PLC ± ANGLES ±0° 30' 0"				
PRODUCT SPEC			SIZE A 4	CAGE CODE 4AFU8
APPLICATION SPEC			DRAWING NO HD30-18BT-90-BK	RESTRICTED TO -
WEIGHT 14.94g			CUSTOMER DRAWING	
SCALE 3:4			SHEET 1 OF 1	REV A2