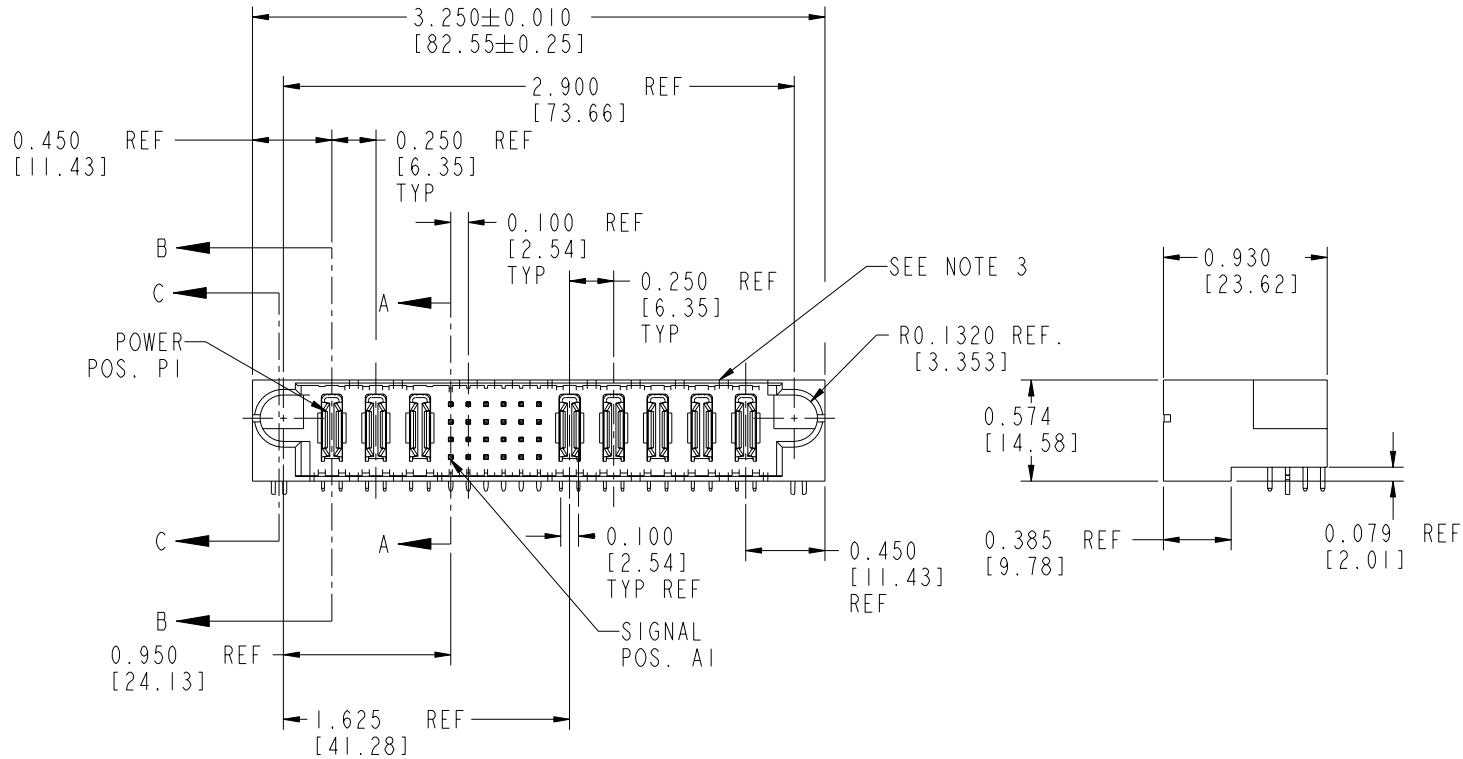


Tous droits strictement réservés. Reproduction ou communication à des tiers interdite sous quelque forme que ce soit sans autorisation écrite du propriétaire. Propriété de c FCI. Droits de reproduction FCI.

All rights strictly reserved. Reproduction or issue to third parties in any form whatever is not permitted without written authority from the proprietor. Property of FCI. Copyright FCI.

PRODUCT No.	ROWS	POWER			SIGNAL					POWER					E2		
		E1	P1	P2	P3	1	2	3	4	5	6	P15	P16	P17		P18	P19
51651-001-- NOTE:2	D C B A																



CODE	DIM "M" ±0.010 [0.25]	CONTACT TYPE
R	0.270	SIGNAL
S	0.270	SIGNAL
T	0.270	SIGNAL
U	0.270	SIGNAL
PA	N/A	POWER
HA	N/A	HOLDDOWN

mat'l code SEE NOTE 1				tolerances unless otherwise specified				CUSTOMER COPY		FCI www.fciconnect.com	
ltr	ecn no.	dr	date	linear	.XX±.01/.X±.3			projection	title 3P + 24S + 5P		
A	V91037	CHB	04-29-99		.XXX±.005/.X±.13				RIGHT ANGLE SOLDER HEADER		
B	V94076	DLW	10-27-99		XXX±.0020/.XXX±.05				product family PwrBlade code 213		
C	V12541	DA1	12-11-01	angles	0°±2°			INCH / MM	size dwg no 51651 SHEET 1 OF 2		
D	DG06-0011	CS	01/09/06	dr	C. BAROT	04-29-99	scale 1:1		cage code 22526		
				enr	J. BROWN	04-29-99					
				chr	J. BROWN	04-29-99					
				appd	J. BROWN	04-29-99					
sheet index	revision sheet	D	D								
		1	2								

form no. 7530-001-103

cage code 22526

PDM: Rev:D

STATUS: Released

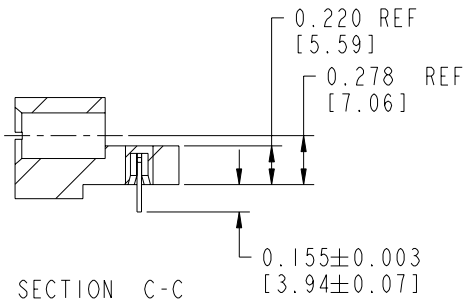
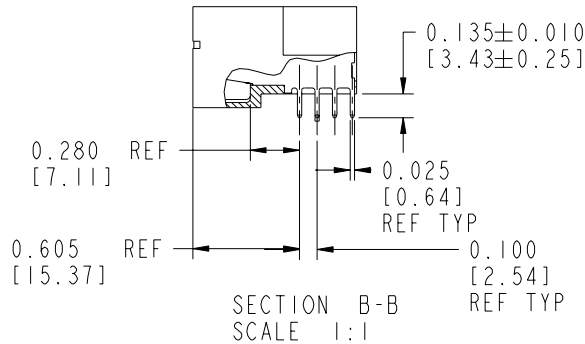
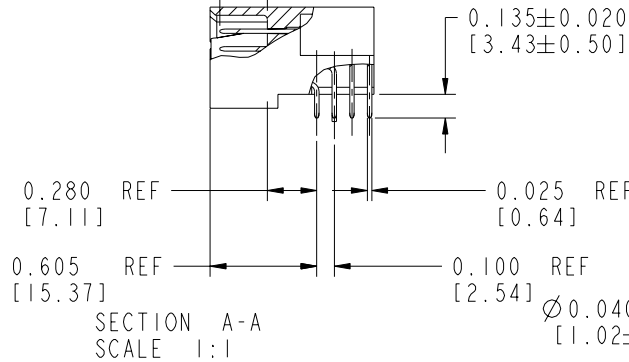
Printed: Dec 20, 2010

Tous droits strictement réservés. Reproduction ou communication à des tiers interdite sous quelque forme que ce soit sans autorisation écrite du propriétaire. Propriété de FCI. Droits de reproduction FCI.

All rights strictly reserved. Reproduction or issue to third parties in any form whatever is not permitted without written authority from the proprietor. Property of FCI. Copyright FCI.

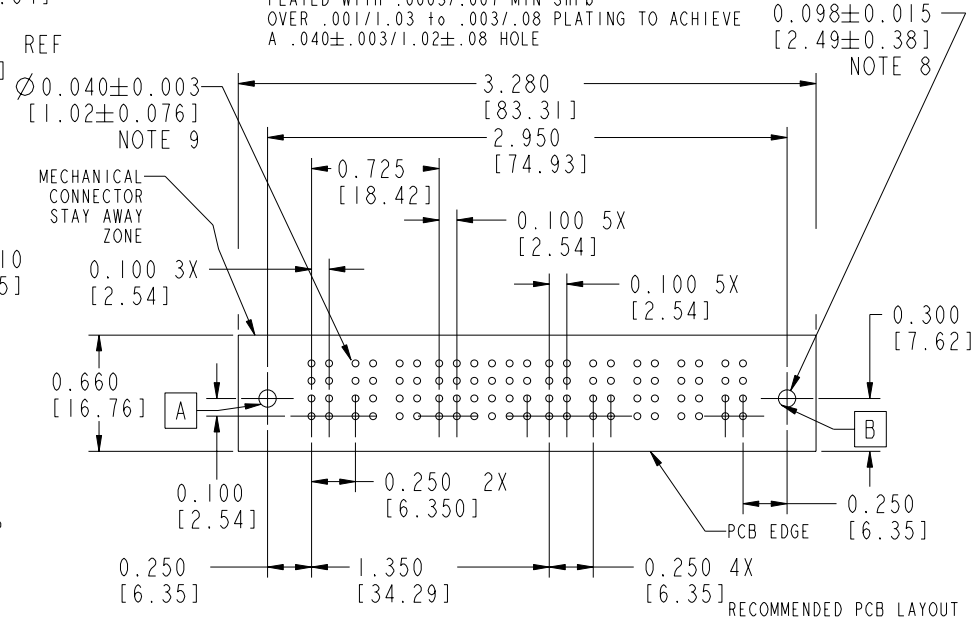
PRODUCT NUMBER
51651-001--
NOTE: 2

DIM "M"
SEE SHEET 1



- CONNECTORS - NOTES:
- HOUSING MATERIAL: UL 94 V-0 GLASS FILLED HIGH TEMP THERMOPLASTIC
SIGNAL PIN MATERIAL: COPPER ALLOY
POWER CONTACT MATERIAL: COPPER ALLOY
 - PLATING:
51651, 51651LF, PLATING SPEC SEE PRINT: 100064183.
 - "MANUFACTURER" NAME, P/N, AND DATE CODE TO APPEAR ON THIS SURFACE
 - PRODUCT SPECIFICATION GS-12-149

- PCB - NOTES
- ALL DIMENSIONS ARE BASIC UNLESS OTHERWISE SPECIFIED.
 - ALL THROUGH HOLES ARE LOCATED WITH A TRUE POSITION OF .004
 - ALL HOLE DIAMETERS ARE FINISHED HOLE SIZE
 - Ø0.098 THROUGH HOLES ARE UNPLATED
 - Ø0.0453/1.151 DRILLED HOLES PLATED WITH .0003/.007 MIN SnPb OVER .001/.03 to .003/.08 PLATING TO ACHIEVE A .040±.003/1.02±.08 HOLE



mat'l code SEE NOTE 1		tolerances unless otherwise specified		CUSTOMER COPY		 www.fciconnect.com	
ltr	ecn no.	dr	date	linear	projection	title 3P + 24S + 5P RIGHT ANGLE SOLDER HEADER	
				linear		product family PwrBlade	
				angles		code 213	
				dr	INCH / MM	product family PwrBlade	
				enrg	1:1	size 51651	
				chr		code 2 OF 2	
				appd		sheet 2 OF 2	
sheet index	revision sheet					cage code 22526	