

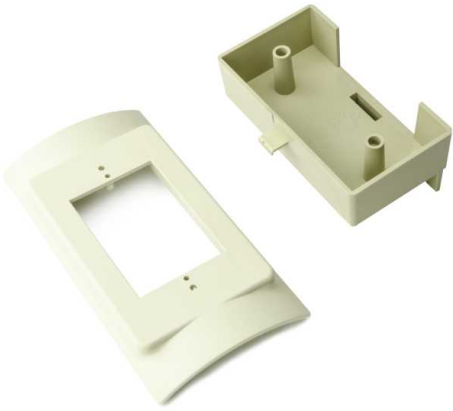
Specification Sheet

Part Number: MCRI-REB

Raceway and fittings are manufactured from a UL94 V0 rated material to ensure compliance with codes.

All fittings have been designed to maintain the required 1" minimum bend radius to meet TIA/EIA-568-B and 569-A standard.

Raceway and fittings are UL Listed to 600 Volts to meet new UL5A and CSA 22.2 No. 62-93 standards.



InfoStream Multi-Channel Raceway Raised Electrical Box, PVC, Ivory, 1/pkg

Article Number	250-00052
Type	MCR-REB
Color	Ivory (IV)
Quantity Per	bag
Product Description	Raised electrical box is used to mount NEMA standard single gang device and faceplate. Raised electrical box allows for additional low-voltage wire fill space. Use with side divider for 2-channel applications.
Short Description	InfoStream Multi-Channel Raceway Raised Electrical Box, PVC, Ivory, 1/pkg

Global Part Name MCR-REB-PVC-BGE

Material Polyvinylchloride (PVC)

Material Shortcut PVC

Flammability UL 94 V0

Halogen Free No

Operating Temperature +122°F (+50°C)

Reach Compliant (Article 33) No

ROHS Compliant Yes

UL Listed (US and Canada) Yes

UL Listed (US) Yes

Package Quantity (Imperial) 5

Package Quantity (Metric) 5

Customs Number 3925900000

