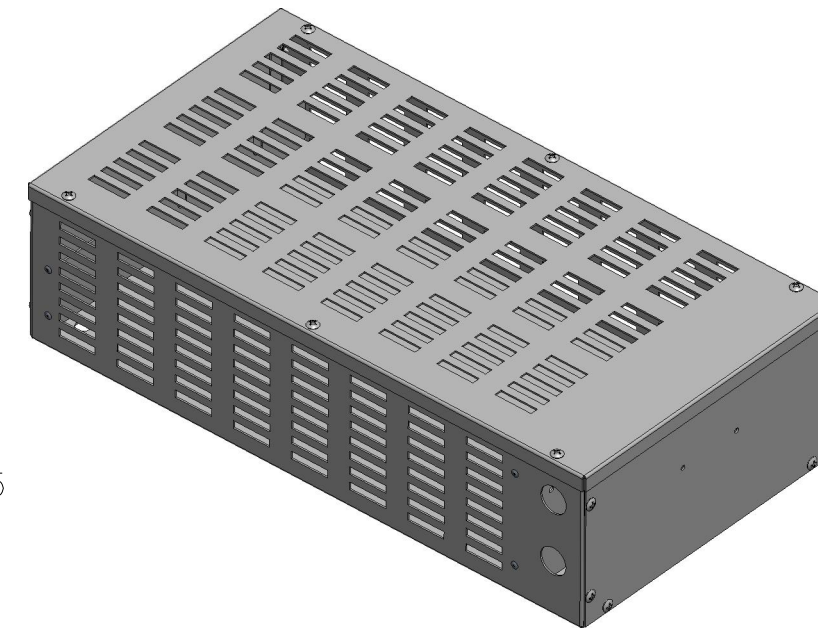
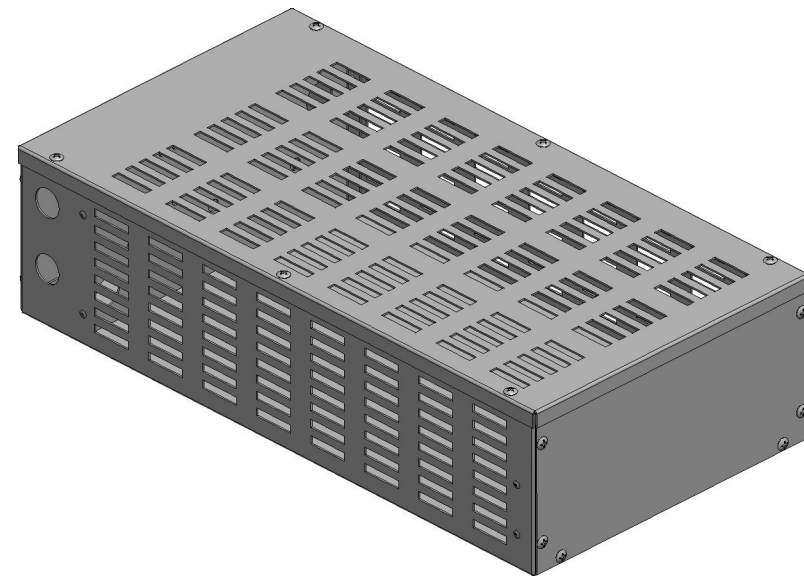
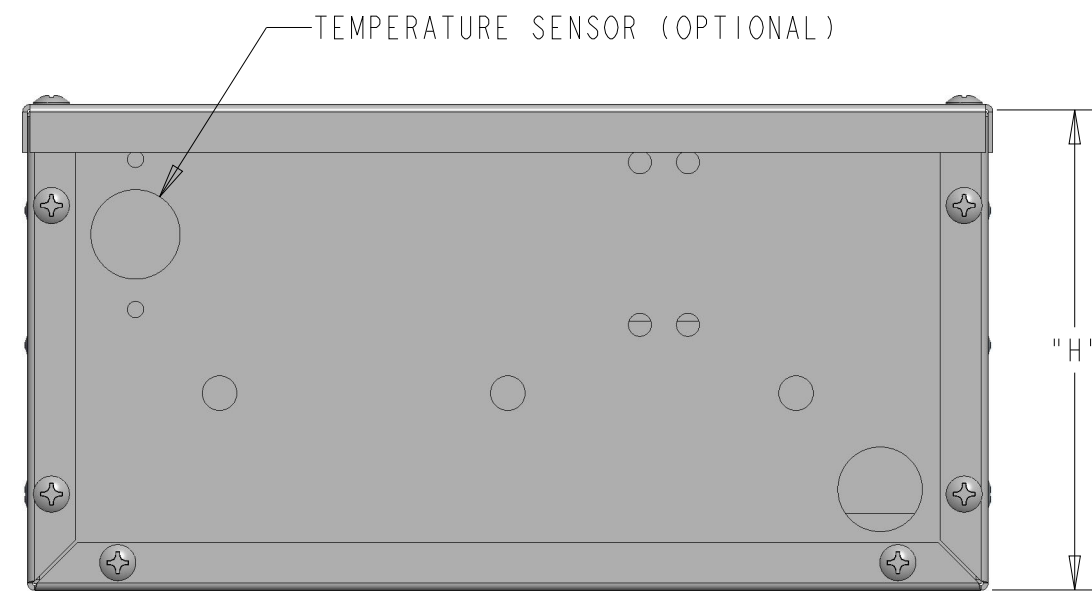


P	LTR	DESCRIPTION	DATE	DWN	APVD
A		INITIAL RELEASE	07OCT2021	KS	AP



SCALE 1:5



(x4) Ø11.125
(MOUNTING HOLES)

(x5) Ø22.225 (KNOCKOUTS)
[ONE LOCATED ON BOTTOM
2 ON LEFT AND RIGHT SIDE]



PART NUMBER	W (mm)	L (mm)	H (mm)	M1 (mm)	M2 (mm)	TOTAL RESISTANCE	H.P.	DUTY CYCLE	DRIVE VOLTAGE	BRAKING TORQUE
HPBA020C375R100E	483	254	127	445	191	375 Ohms ± 10%	2.00	100%	460 V	100%

NOTE:
1. FOR FURTHER TECHNICAL INFORMATION PLEASE SEE THE DATASHEET FOR THE HPBA SERIES

THIS DRAWING IS A CONTROLLED DOCUMENT.

DWN	S. KARTHIK	22-09-2021
CHK	ALLAN PILE	22-09-2021
APVD	ALLAN PILE	22-09-2021

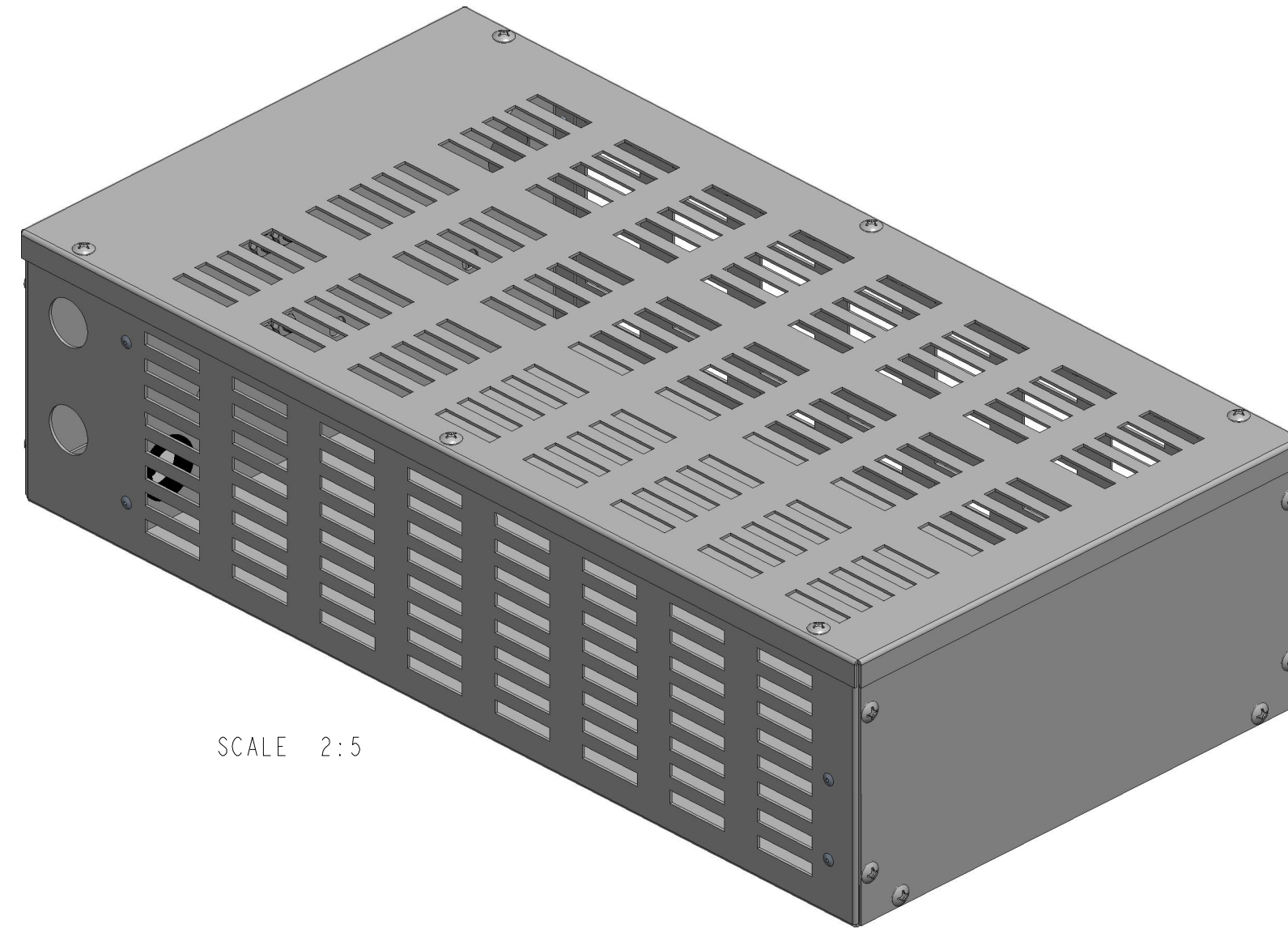
STE TE Connectivity

NAME: BRAKING RESISTOR ASSEMBLY TYPE HPBA
SERIES HPBA020C375R100E

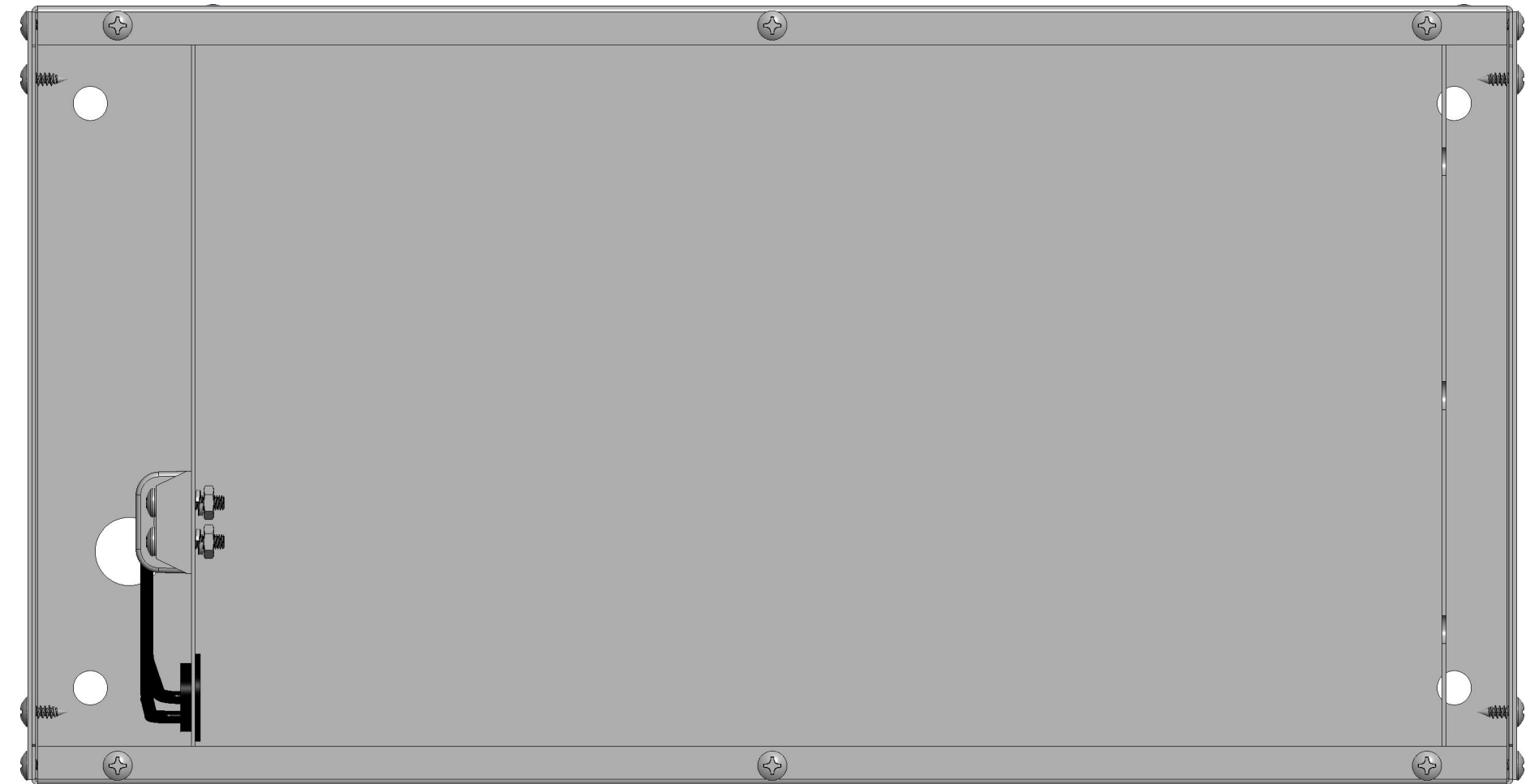
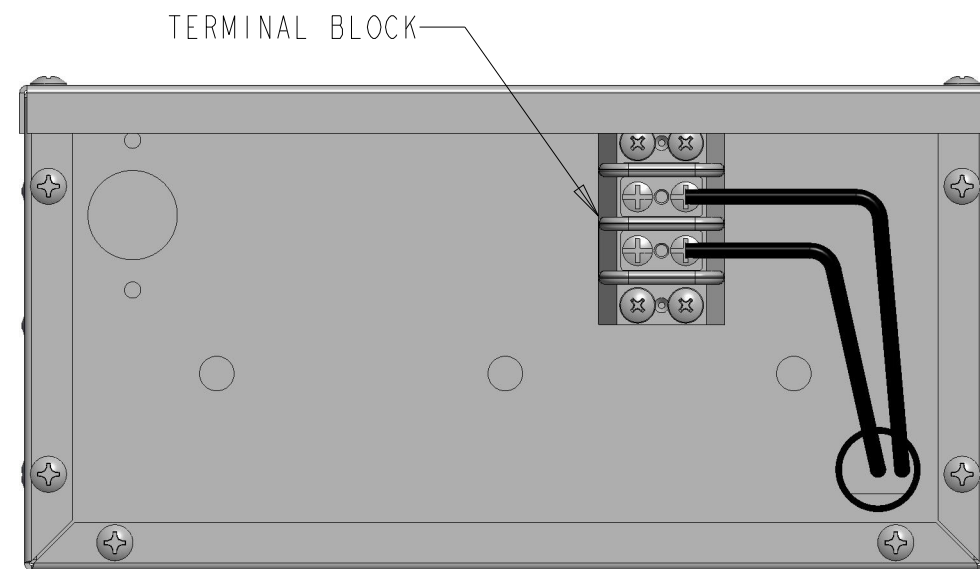
SIZE	CAGE CODE	DRAWING NO	RESTRICTED TO
A2	00779	C-3-2176470-0	-


CUSTOMER DRAWING SCALE 1:2 SHEET 1 OF 2 REV A

P	LTR	DESCRIPTION	DATE	DWN	APVD
		SEE SHEET 1			



SCALE 2:5



THIS DRAWING IS A CONTROLLED DOCUMENT.		DWN S. KARTHIC 22-09-2021	 TE Connectivity	
DIMENSIONS: mm		CHK ALLAN PILE 22-09-2021		
TOLERANCES UNLESS OTHERWISE SPECIFIED:		APVD ALLAN PILE 22-09-2021	NAME BRAKING RESISTOR ASSEMBLY TYPE HPBA SERIES HPBA020C375R100E	
0 PLC ± 1 PLC ± 2 PLC ±0.50 3 PLC ±0.500 4 PLC ± ANGLES ± FINISH -		PRODUCT SPEC -	APPLICATION SPEC -	RESTRICTED TO -
MATERIAL -		WEIGHT -	SIZE A2	CAGE CODE 00779
		CUSTOMER DRAWING	DRAWING NO C-3-2176470-0	SCALE 1:2
			SHEET 2	OF 2
			REV A	