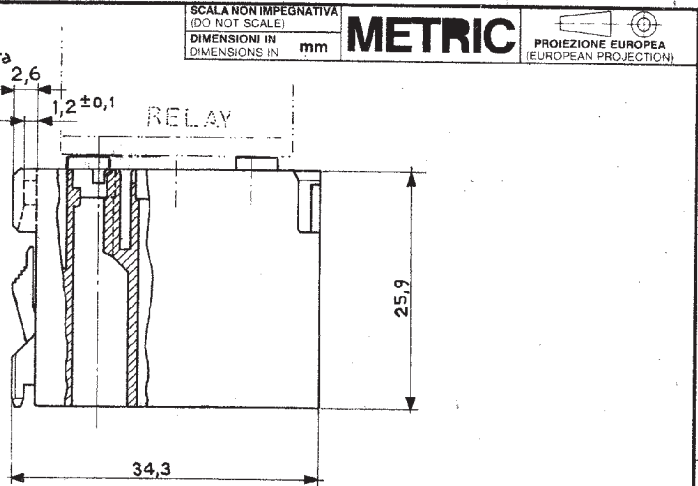
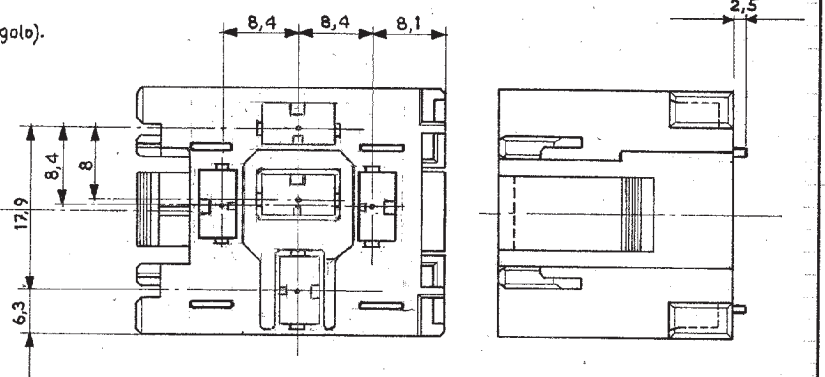


(Adatto per lamiera spess. 1,2 ± 0,1)  
Suitable for  
Thick Plate.



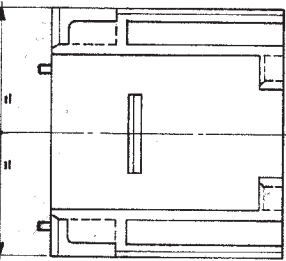
Slots for single panel mounting.  
(Feritoie per montaggio connettore singolo).



Notes: (Note)

1) No more than 2 modules may be assembled together.  
(Non assemblare più di 2 connettori insieme).

Pitch for Modular Ass'y.  
(Passo per Assemblaggio Modulare).



SCALA NON IMPEGNATIVA (DO NOT SCALE)  
DIMENSIONI IN mm  
**METRIC**  
PROIEZIONE EUROPEA (EUROPEAN PROJECTION)

**OBSOLETE**

Orange (Arancino)	Polyamide 6.6 (Poliammide 6.6)	1-281856-0
Violet (Viola)		281856-9
Gray (Grigio)		281856-8
Brown (Marrone)		281856-7
Yellow (Giallo)		281856-6
Blue (Blu)		281856-5
Green (Verde)		281856-4
Red (Rosso)		281856-3
Black (Nero)		281856-2
Natural (Naturale)		281856-1
COLORE (COLOUR)	MATERIALE (MATERIAL)	NUMERO (PART NUMBER)

PINTURA / COLORE (FINISH / COLOUR)		MATERIALE (MATERIAL)		NUMERO (PART NUMBER)	
<b>CUSTOMER DWG. SOLO PER RIFERIMENTO</b>				<b>DISEGNO PER CLIENTE SOLO PER RIFERIMENTO</b>	
THIS DRAWING IS UNPUBLISHED		RELEASE FOR PUBLICATION 19			
COPYRIGHT 1986 BY AMP INCORPORATED, HARRISBURG, PA ALL INTERNATIONAL RIGHTS RESERVED AMP PRODUCTS MAY BE COVERED BY U.S. AND FOREIGN PATENT AND/OR PATENT PENDING		TOLLERANZE: SE NON DIVERSAMENTE SPECIFICATO (TOLERANCES UNLESS OTHERWISE SPECIFIED)			
± 0.3		ANGOLI (ANGLES) ± 2°		SCALA (SCALE) 2:1	
A1 REVISED PER ECR-19-018072		SS/TO 2019		TE Connectivity	
A In Produzione		ES 15-88		DESCRIZIONE (DESCRIPTION) MODULAR CONNECTOR FOR RELAY	
4 Aggiunto versioni colorate		ES 3-88		WITH POSITIVE LOCK CAVITIES.	
3 AGGIORNATO # 26-6-87		DIS (DR) bassano 20-Nov. 86		LOC SIZE NUMERO (DWG NO) 1A3 C-281856	
2 P/N ERA 1A86-5382 4-5-87		CONT. (CHK) [Signature]		REV (REV) A1	
1 AGGIORNATO # 3-3-87		APP. (APP) [Signature]		FOGLIO (SHEET) 1 DI 1 (OF 1)	
REV (REV) [Signature]		DIS. DATA (DR) (DATE)			

DISTRIBUZIONE (PRINT DIST)