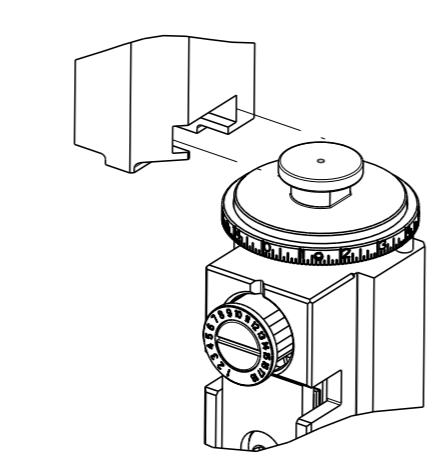


PART NUMBER	REVISION	DESCRIPTION	FEED TYPE
2151200-1	H	FINE CRIMP HEIGHT ADJUST	MECHANICAL
2151200-2	J	FINE CRIMP HEIGHT ADJUST	PNEUMATIC
7-2151200-1	H	MECHANICAL AND CRIMP TOOLING KIT	MECHANICAL
7-2151200-2	J	PNEUMATIC AND CRIMP TOOLING KIT	PNEUMATIC
7-2151200-7	C	CRIMP TOOLING KIT	-

ATLANTIC VERSION TERMINATOR INTERFACE ADAPTER



APPLICATOR DATA		
CRIMP	SIZE	TYPE
WIRE	1.78 mm [.070]	F
INSUL	2.29 mm [.090]	O

APPLICATOR INSTRUCTIONS  
408-35042

TERMINAL DATA: TE TERMINAL		TE CRIMP SPECIFICATION	
TERMINAL NAME: AMP MCP4.8K			
WIRE STRIP LENGTH		INSULATION DIAMETER RANGE	
3.00-3.60 mm [.118-.142 IN]		Ø1.10-1.60 mm [.043-.063 IN]	
TERMINAL APPLICATION SPECIFICATION	(A)114-18388		
TERMINALS APPLIED			
TE TERMINAL	TE TERMINAL	TE TERMINAL	TE TERMINAL
(A) 1241400-1			

TERMINAL DATA: TE TERMINAL		TE CRIMP SPECIFICATION	
TERMINAL NAME: STANDARD POWER TIMER CONTACT TYPE A			
WIRE STRIP LENGTH		INSULATION DIAMETER RANGE	
2.90-3.50 mm [.114-.138 IN]		Ø1.15-1.60 mm [.045-.063 IN]	
TERMINAL APPLICATION SPECIFICATION	(B)114-18037		
TERMINALS APPLIED			
TE TERMINAL	TE TERMINAL	TE TERMINAL	TE TERMINAL
(B) 964322-1			

WIRE SIZE	CRIMP HEIGHT mm [INCH]	CRIMP HEIGHT REFERENCE SETTING
0.50mm2	1.26+/-0.05 [.050+/-0.002]	3.6
0.35mm2	1.19+/-0.03 [.047+/-0.001]	4.4
0.25mm2	1.15+/-0.03 [.045+/-0.001]	4.8
0.20mm2	1.13+/-0.03 [.044+/-0.001]	5.0

WIRE SIZE	CRIMP HEIGHT mm [INCH]	CRIMP HEIGHT REFERENCE SETTING
0.50mm2	1.26+/-0.03 [.050+/-0.001]	3.6
0.35mm2	1.19+/-0.03 [.047+/-0.001]	4.4
0.25mm2	1.15+/-0.03 [.045+/-0.001]	4.8
0.20mm2	1.13+/-0.03 [.044+/-0.001]	5.0

- 1. RECOMMENDED SPARE PARTS
- 2. REFER TO SUPPLIED INSTRUCTION SHEET FOR CLEANING, LUBRICATION AND STORAGE OF APPLICATOR.
- 3. APPLY PART NUMBER 2-23419-6 LOCTITE TO THREADS OF ITEM 242.
- 4. CRIMP HEIGHT REFERENCE SETTING WAS THE SETTING USED WHEN THE APPLICATOR WAS QUALIFIED AT THE FACTORY. ADJUSTMENT MAY BE NECESSARY WHEN RUNNING APPLICATOR IN THE FIELD.
- 5. FEED REQUIRES ADJUSTMENT WHEN CHANGING TERMINALS.  
TERMINAL 1241400 FEED: 17mm [.669 IN]  
TERMINAL 964322 FEED: 16mm [.630 IN]
- 6. UNLESS SPECIFIED OTHERWISE TORQUE VALUES SHALL BE USED PER DOCUMENT, 101-35000.

**\*WARNING**  
ON INSTALLATION, SET WIRE DISC TO CRIMP HEIGHT REFERENCE SETTING FOR LARGEST WIRE SIZE. CRIMP HEIGHT REFERENCE SETTINGS GREATER THAN THE VALUE SHOWN MAY CAUSE DAMAGE TO THE CRIMP TOOLING. REFER TO THE INSTRUCTION SHEET FOR PROPER SETUP AND ADJUSTMENTS.

LOC	DIST	REVISIONS			
		REV	DATE	BY	APPV
A	66	F	20MAR2015	JH	JT
		G	11MAY2017	KH	JDG
		H	20APR2018	TB	JDG
		J	10APR2019	LG	TE

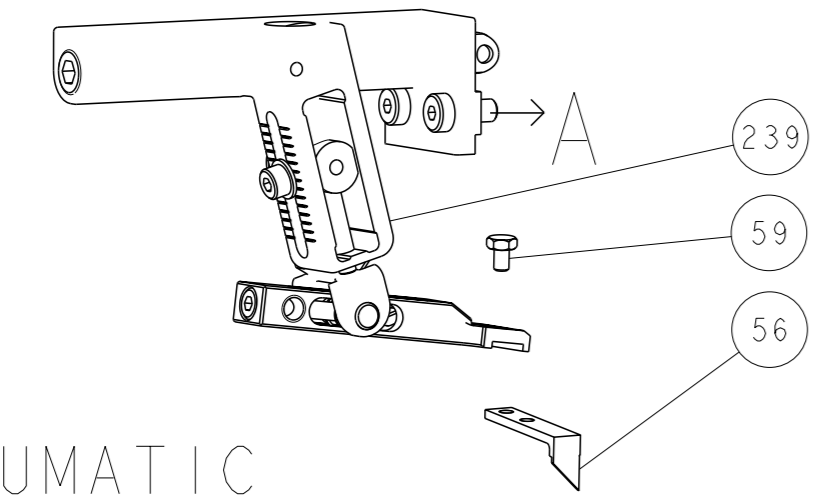
-	1	-	1	-	2119641-1	FEED CAM, AIR FEED	248
-	1	1	1	1	2119082-5	CAM, SNAIL, INSULATION ADJUSTMENT	244
-	1	1	1	1	2079764-1	WASHER, WAVE SPRING, CREST-TO-CREST	243
-	1	1	1	1	2119083-1	RETAINER, INSULATION DIAL	242
-	1	1	1	1	7-18023-7	SCR, SKT HD CAP M3 X 4.0	241
-	-	1	-	1	2119580-1	MECHANICAL FEED ASSEMBLY	239
-	1	-	1	-	2844940-1	AIR FEED MODULE	238
-	REF	REF	REF	REF	994970-2	COUNTER, MAGNETIC	164
-	1	1	1	1	2844908-1	SCREW, LOCKING	99
-	1	1	1	1	2844907-1	POST, LOCKING	98
-	1	1	1	1	455888-5	SPACER, CRIMPER	82
-	1	1	1	1	1803607-3	DOCUMENTATION PACKAGE	71
-	1	1	1	1	2119740-1	TAG, IDENTIFICATION	67
-	2	2	2	2	2168078-1	SCREW, DRIVE, RH, RoHS, 2 x .188	66
-	1	1	1	1	2168083-2	SCR, SKT HD CAP, RoHS, M4 X 8.0	60
-	1	1	1	1	5-18022-5	SCR, HEX HD CAP, M4 X 6.0	59
-	1	1	1	1	1338685-1	PAWL, FEED	56
-	4	4	4	4	2168083-3	SCR, SKT HD CAP, RoHS, M4 X 12.0	54
-	2	2	2	2	2168083-3	SCR, SKT HD CAP, RoHS, M4 X 12.0	53
-	1	1	1	1	1803382-2	HOLD DOWN, SPRING LOADED	50
-	1	2	1	2	18023-9	SCR, SKT HD CAP M4 X 6.0	49
-	-	1	-	1	2119652-1	FEED CAM, PRE FEED	48
-	-	1	-	1	2119653-1	FEED CAM, POST FEED	47
-	1	1	1	1	1803583-9	APPLICATOR BASIC ASSEMBLY, SF	46
-	1	1	1	1	1803515-1	RAM ASSEMBLY, SF ATLANTIC	44
-	1	1	1	1	1803602-1	SCR, BHSC, RoHS (M8 X 25)	41
-	1	1	1	1	1-1752356-5	SUPPORT, TERMINAL	34
-	2	2	2	2	2079383-5	SCR, BHSC, RoHS (M4 X 20)	33
-	2	2	2	2	2-2844962-6	SPACER, CYLINDRICAL, STRIP GUIDE	30
-	1	1	1	1	2844992-2	ASSEMBLY, STRIP GUIDE	29
-	1	1	1	1	1-455888-0	SPACER, CRIMPER	28
-	1	1	1	1	1320928-2	STRIP GUIDE	24
-	1	1	1	1	2168083-2	SCR, SKT HD CAP, RoHS, M4 X 8.0	21
-	2	2	2	2	1-18028-2	WASHER, FLAT, REG M4	20
-	1	1	1	1	2119533-1	STRIPPER, SIDE FEED	19
-	1	1	1	1	2119806-1	INSERT, SHEAR	13
-	1	1	1	1	3-22280-3	SPRING, COMPRESSION	12
-	1	1	1	1	1-356885-4	STOP, SHEAR	11
-	1	1	1	1	2119805-1	SHEAR HOLDER, FRONT	10
-	1	1	1	1	454276-5	FLOATING SHEAR, FRONT	9
-	1	2	2	1	7-1333203-2	ANVIL, COMBINATION	8
-	1	1	1	1	3-240641-9	SPACER	7
-	1	1	1	1	2119757-8	DEPRESSOR, SHEAR	5
-	1	1	1	1	238011-9	BLOCK, CRIMPER SPACER	4
-	1	2	2	1	1-2119784-8	CRIMPER, INSULATION O PREMIUM	3
-	1	1	1	1	1-455888-1	SPACER, CRIMPER	2
-	1	2	2	1	3-456404-2	CRIMPER, WIRE PREMIUM	1

ATLANTIC VERSION  
Shown on sheets 1 of 4 & 2 of 4  
(Pacific version shown on sheets 3 of 4 & 4 of 4)

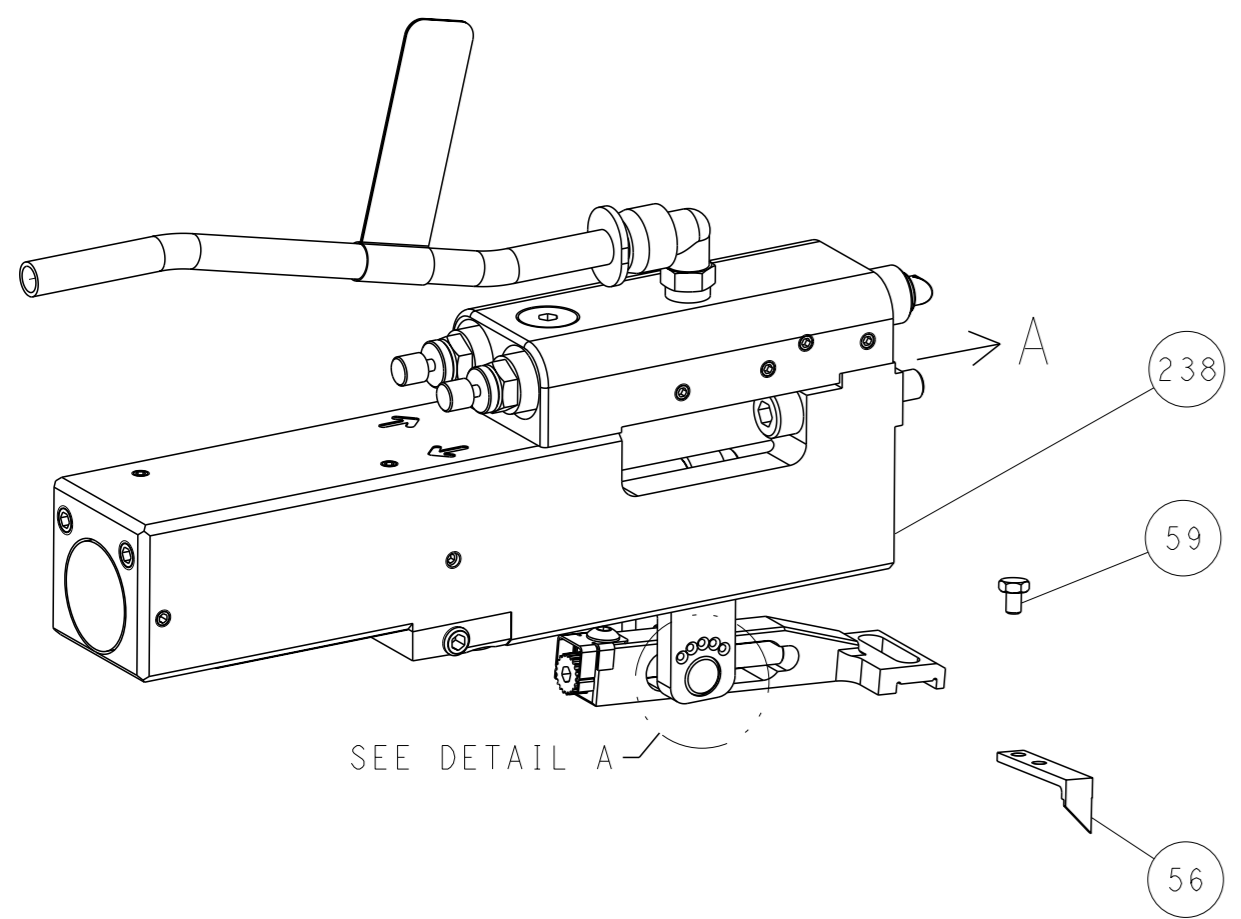
DIMENSIONS:		TOLERANCES UNLESS OTHERWISE SPECIFIED:		MATERIAL:	
mm	PLC	mm	PLC	FINISH	FINISH
0	±	0	±	-	-
1	±	1	±	-	-
2	±	2	±	-	-
3	±	3	±	-	-
4	±	4	±	-	-
5	±	5	±	-	-
6	±	6	±	-	-
7	±	7	±	-	-
8	±	8	±	-	-
9	±	9	±	-	-
10	±	10	±	-	-
11	±	11	±	-	-
12	±	12	±	-	-
13	±	13	±	-	-
14	±	14	±	-	-
15	±	15	±	-	-
16	±	16	±	-	-
17	±	17	±	-	-
18	±	18	±	-	-
19	±	19	±	-	-
20	±	20	±	-	-
21	±	21	±	-	-
22	±	22	±	-	-
23	±	23	±	-	-
24	±	24	±	-	-
25	±	25	±	-	-
26	±	26	±	-	-
27	±	27	±	-	-
28	±	28	±	-	-
29	±	29	±	-	-
30	±	30	±	-	-
31	±	31	±	-	-
32	±	32	±	-	-
33	±	33	±	-	-
34	±	34	±	-	-
35	±	35	±	-	-
36	±	36	±	-	-
37	±	37	±	-	-
38	±	38	±	-	-
39	±	39	±	-	-
40	±	40	±	-	-
41	±	41	±	-	-
42	±	42	±	-	-
43	±	43	±	-	-
44	±	44	±	-	-
45	±	45	±	-	-
46	±	46	±	-	-
47	±	47	±	-	-
48	±	48	±	-	-
49	±	49	±	-	-
50	±	50	±	-	-
51	±	51	±	-	-
52	±	52	±	-	-
53	±	53	±	-	-
54	±	54	±	-	-
55	±	55	±	-	-
56	±	56	±	-	-
57	±	57	±	-	-
58	±	58	±	-	-
59	±	59	±	-	-
60	±	60	±	-	-
61	±	61	±	-	-
62	±	62	±	-	-
63	±	63	±	-	-
64	±	64	±	-	-
65	±	65	±	-	-
66	±	66	±	-	-
67	±	67	±	-	-
68	±	68	±	-	-
69	±	69	±	-	-
70	±	70	±	-	-
71	±	71	±	-	-
72	±	72	±	-	-
73	±	73	±	-	-
74	±	74	±	-	-
75	±	75	±	-	-
76	±	76	±	-	-
77	±	77	±	-	-
78	±	78	±	-	-
79	±	79	±	-	-
80	±	80	±	-	-
81	±	81	±	-	-
82	±	82	±	-	-
83	±	83	±	-	-
84	±	84	±	-	-
85	±	85	±	-	-
86	±	86	±	-	-
87	±	87	±	-	-
88	±	88	±	-	-
89	±	89	±	-	-
90	±	90	±	-	-
91	±	91	±	-	-
92	±	92	±	-	-
93	±	93	±	-	-
94	±	94	±	-	-
95	±	95	±	-	-
96	±	96	±	-	-
97	±	97	±	-	-
98	±	98	±	-	-
99	±	99	±	-	-
100	±	100	±	-	-

LOC		DIST		REVISIONS			
A	66	P	LYR	DESCRIPTION	DATE	OWN	APVD
		-		SEE SHEET 1			

# FEED TYPE MECHANICAL



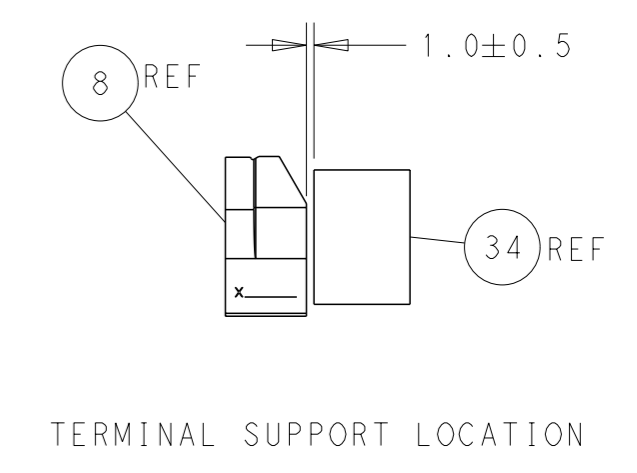
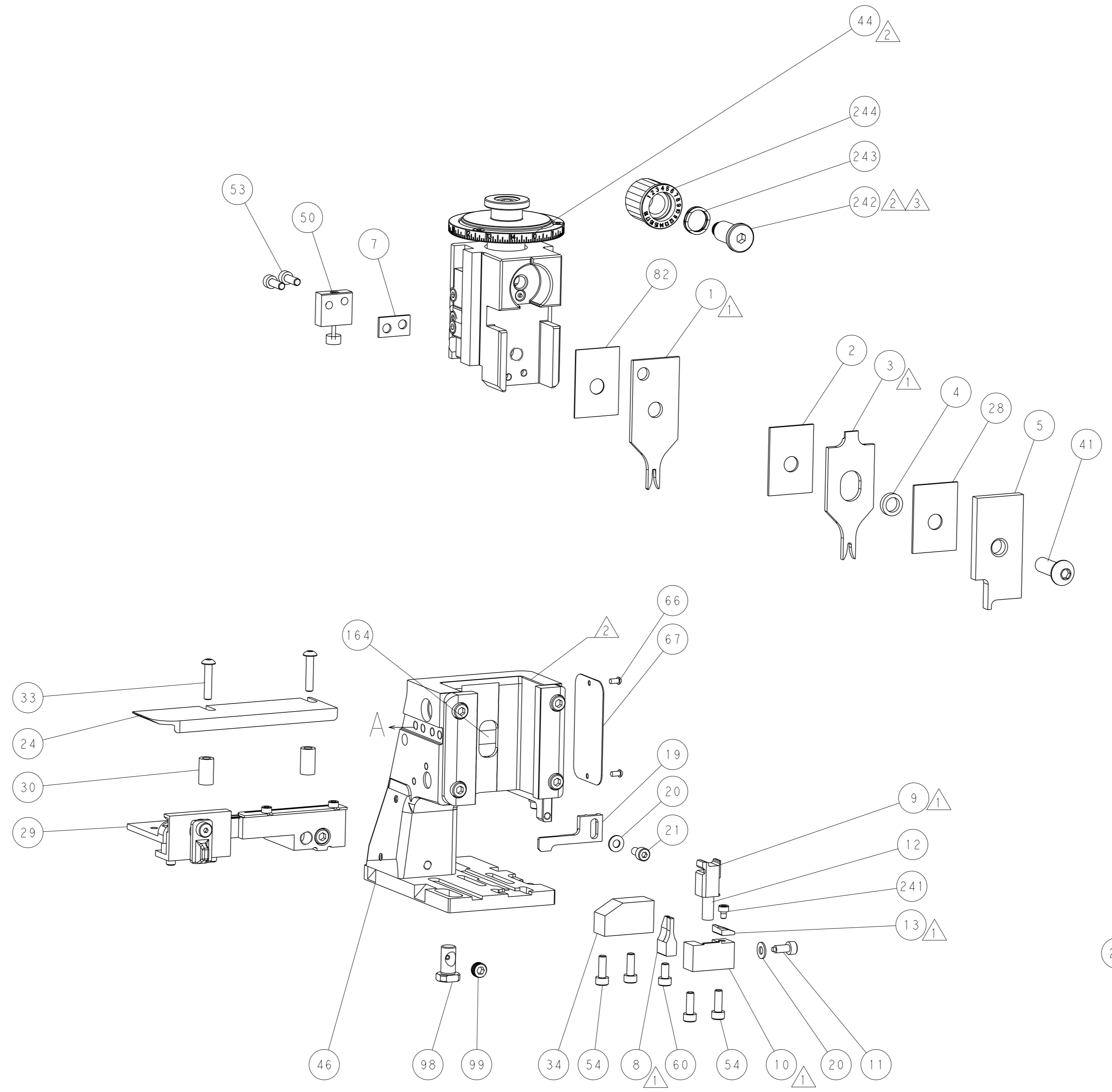
## PNEUMATIC



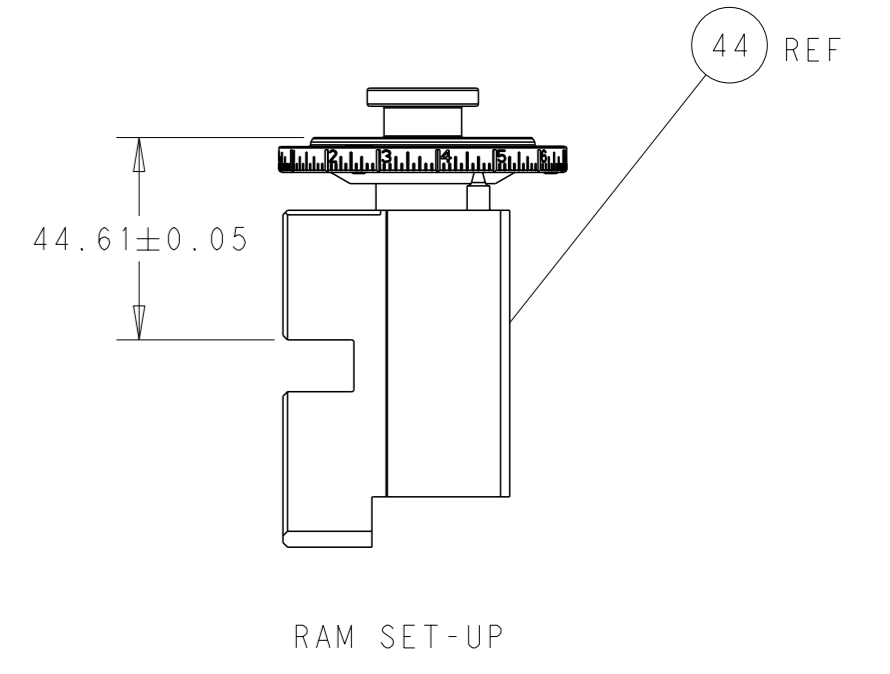
### FEED SPRING SETTING POSITION (SHOWN FROM REAR SIDE)



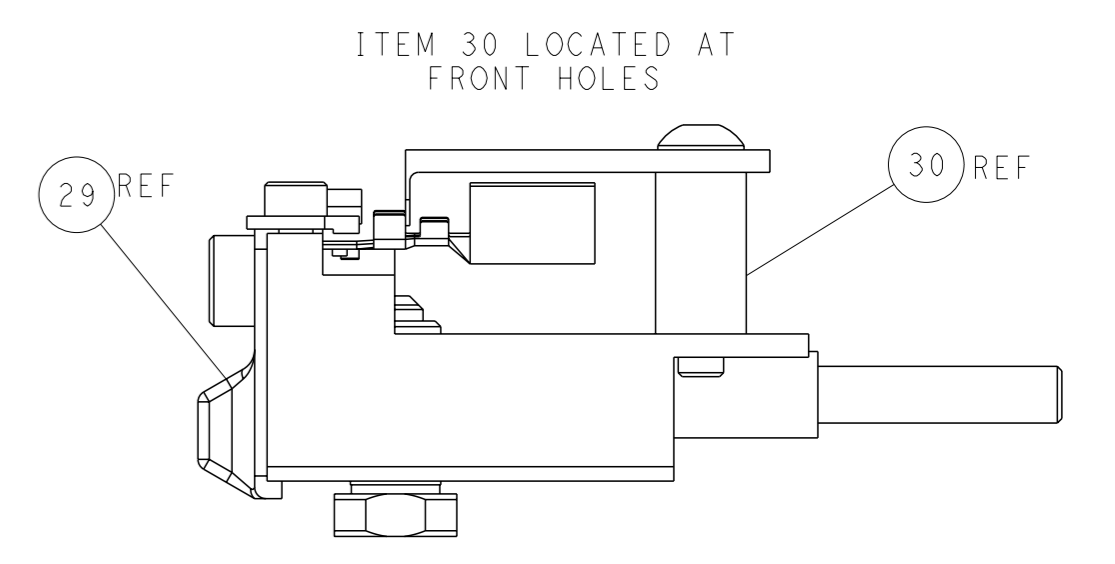
DETAIL A



TERMINAL SUPPORT LOCATION

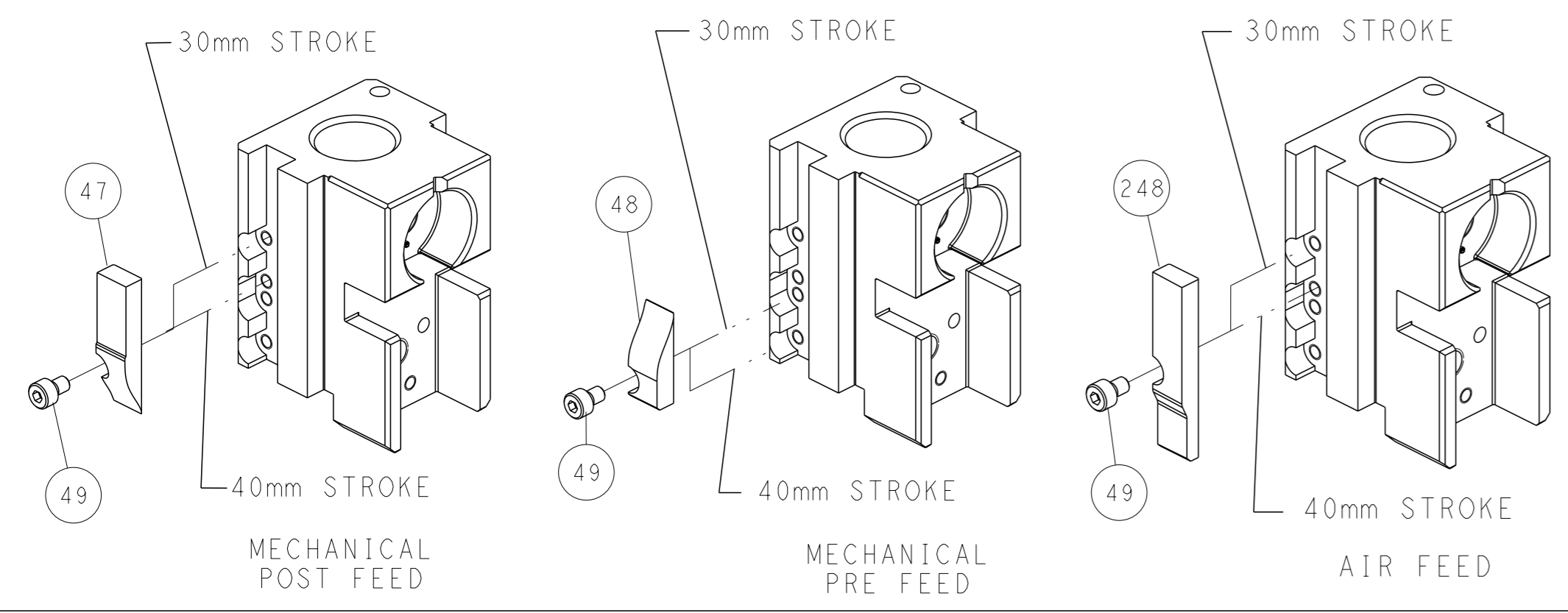


RAM SET-UP



ITEM 30 LOCATED AT FRONT HOLES

## CAM POSITIONS



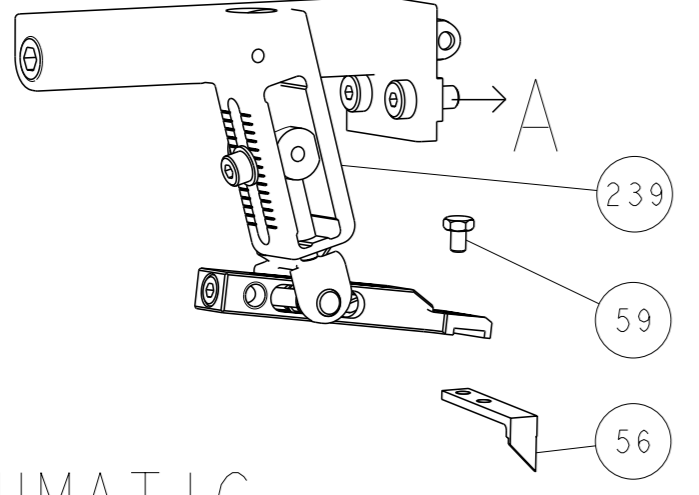
**ATLANTIC VERSION**  
 Shown on sheets 1 of 4 & 2 of 4  
 (Pacific version shown on sheets 3 of 4 & 4 of 4)

<small>THIS DRAWING IS A CONTROLLED DOCUMENT FOR TYCO ELECTRONICS CORPORATION. IT IS SUBJECT TO CHANGE AND TO CONTROLING ENGINEERING DISCRETION SHOULD BE CONTACTED FOR THE LATEST REVISION.</small>		OWN: C. MOYER 23AUG2011 CHK: T. ELBIN 23AUG2011 APVD: T. ELBIN 23AUG2011	NAME: TE Connectivity Harrisburg, PA 17105-3608
DIMENSIONS: mm TOLERANCES UNLESS OTHERWISE SPECIFIED: 0 PLC ± 1 PLC ± 2 PLC ± 3 PLC ± 4 PLC ± ANGLES FINISH ±	APPLICATION SPEC: - WEIGHT: - MATERIAL: -	SIZE: A1 CAGE CODE: 00779 DRAWING NO: ©=2151200	RESTRICTED TO: - SCALE: 1:2 SHEET: 2 of 4 REV: J

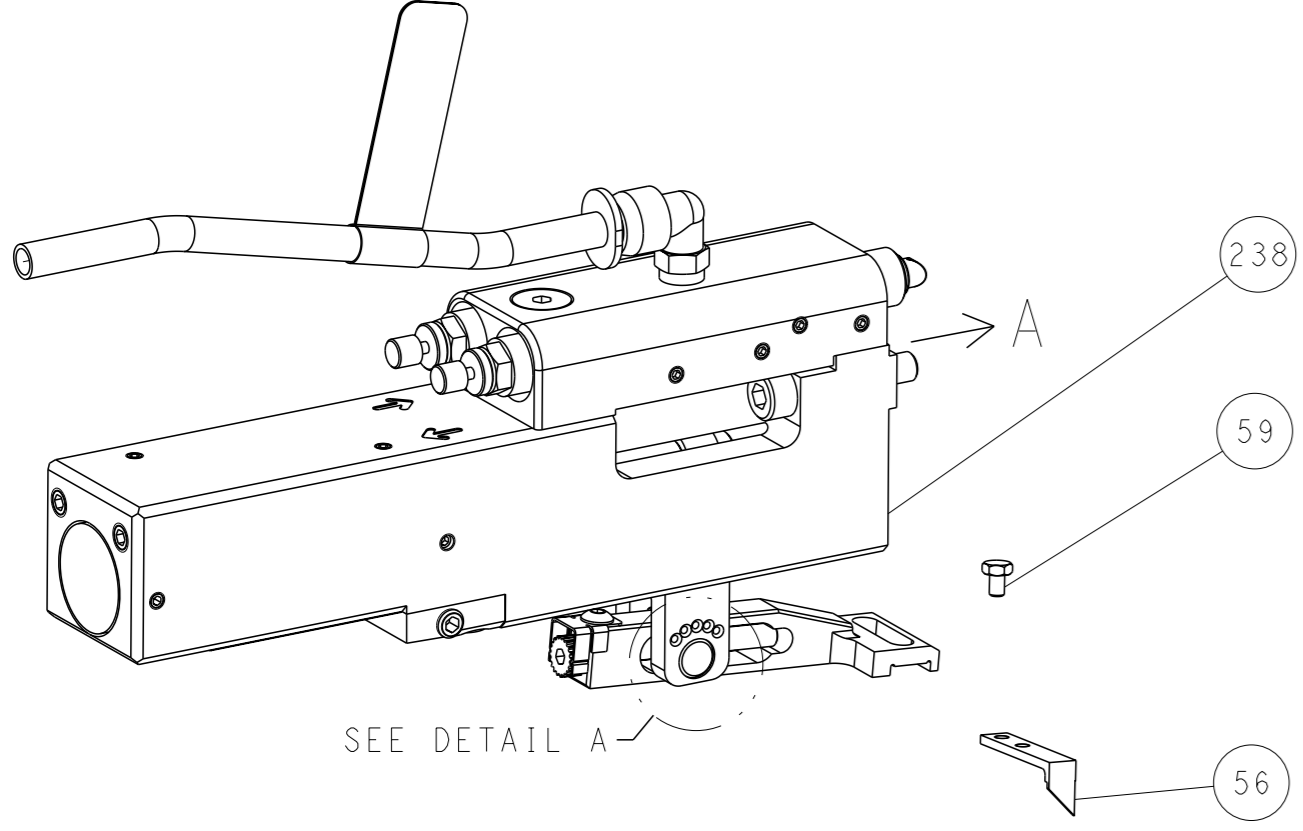


LOC		DIST		REVISIONS			
A	66	P	LYR	DESCRIPTION	DATE	OWN	APVD
		-		SEE SHEET 1			

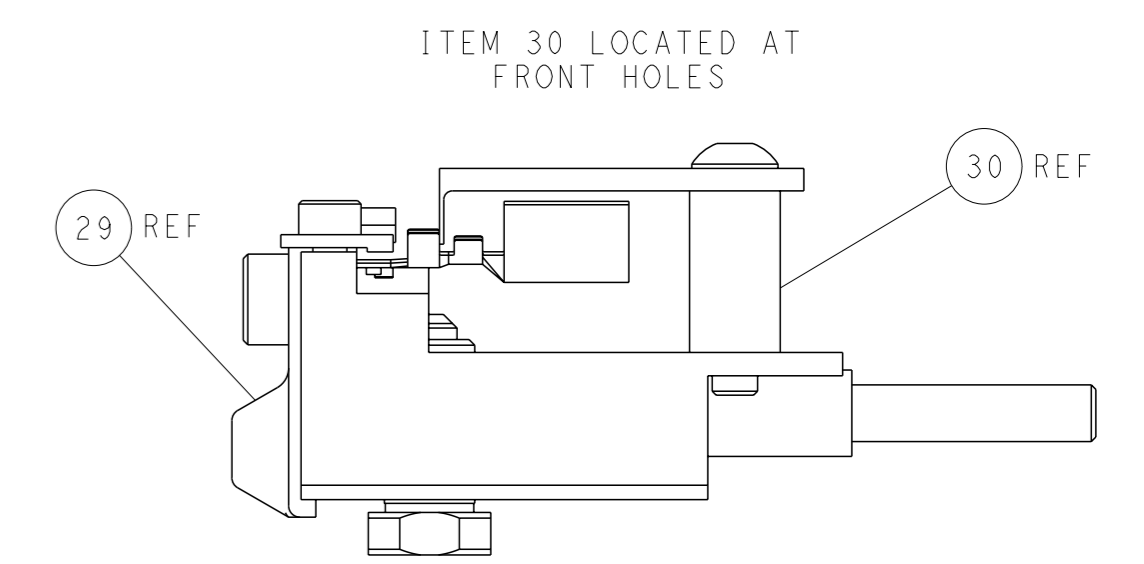
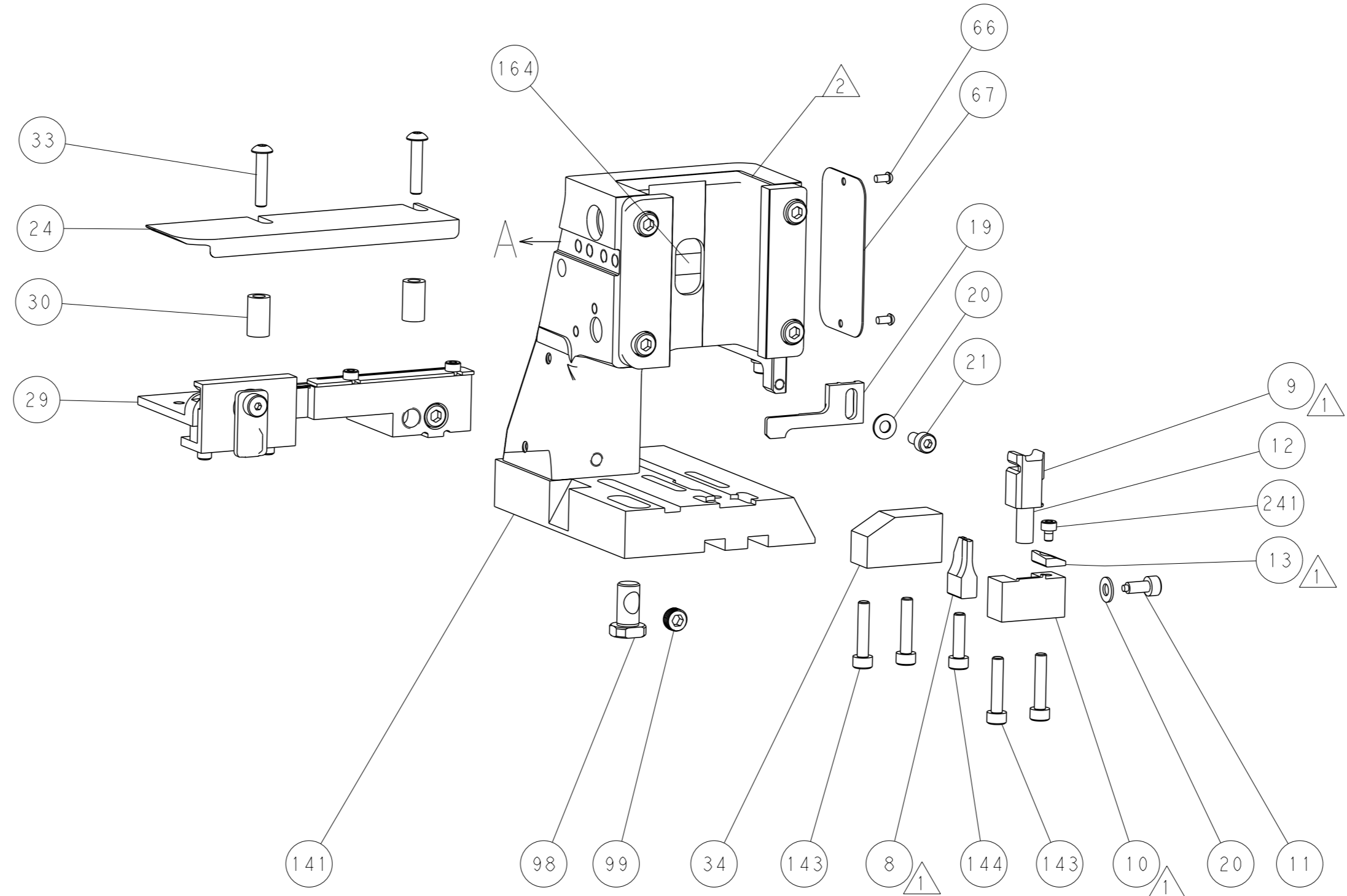
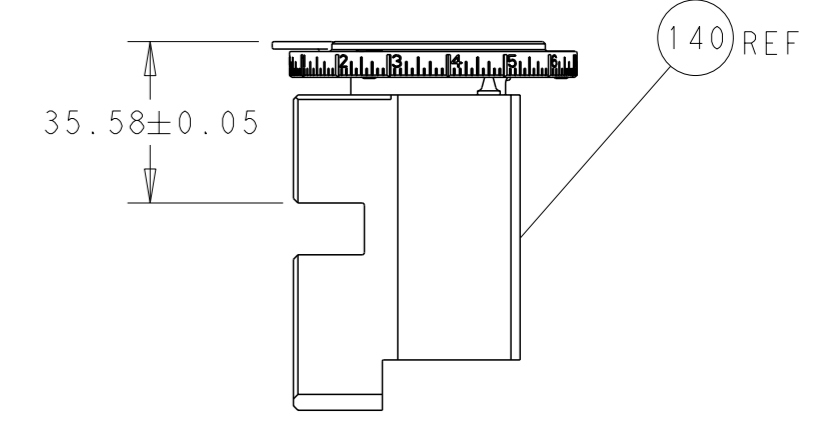
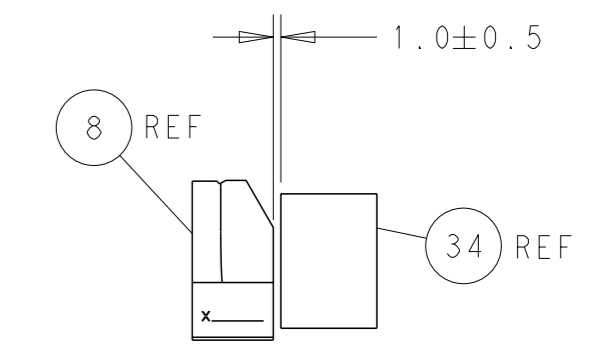
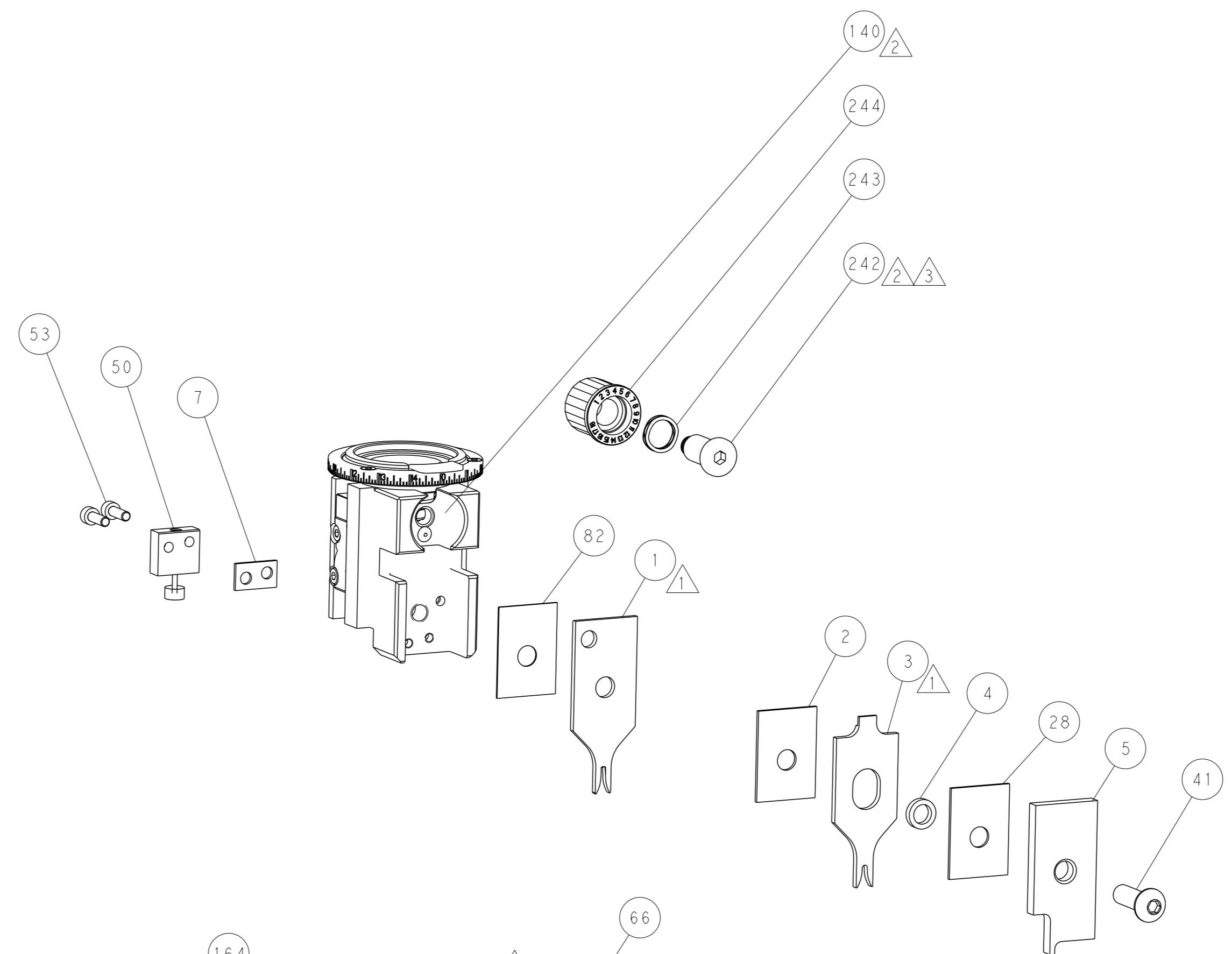
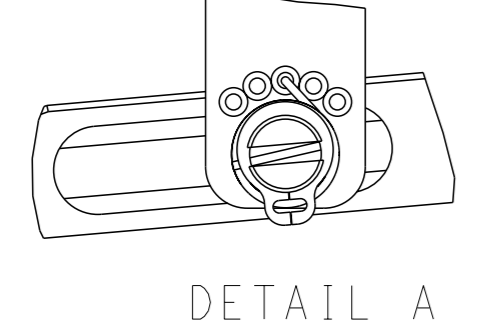
# FEED TYPE MECHANICAL



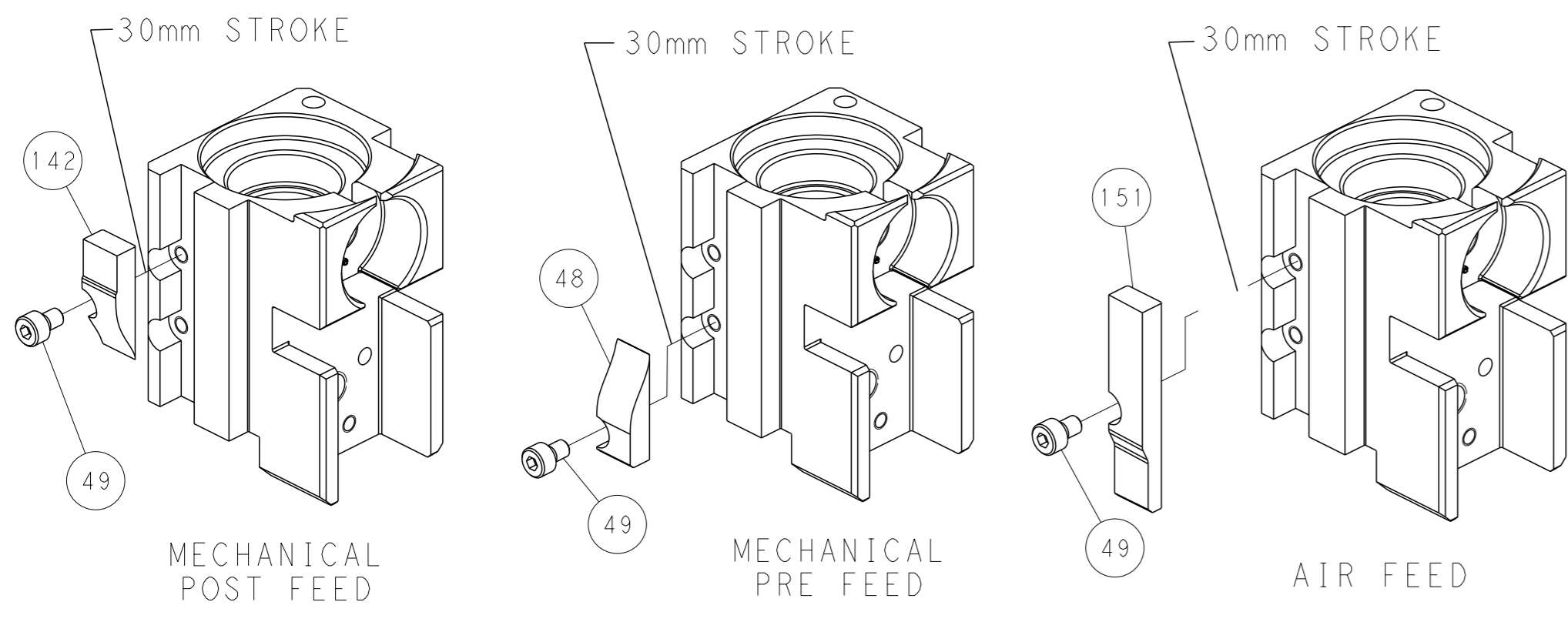
## PNEUMATIC



## FEED SPRING SETTING POSITION (SHOWN FROM REAR SIDE)



# CAM POSITIONS



**PACIFIC VERSION**  
 Shown on sheets 3 of 4 & 4 of 4  
 (Atlantic version shown on sheets 1 of 4 & 2 of 4)

<small>THIS DRAWING IS A CONTROLLED DOCUMENT FOR TYCO ELECTRONICS CORPORATION. IT IS SUBJECT TO CHANGE AND THE CONTROLLING ENGINEERING ORGANIZATION SHOULD BE CONTACTED FOR THE LATEST REVISION.</small>		OWN: C. MOYER 23AUG2011 CHK: T. ELBIN 23AUG2011 APVD: T. ELBIN 23AUG2011	NAME: TE Connectivity Harrisburg, PA 17105-3608
DIMENSIONS: mm TOLERANCES UNLESS OTHERWISE SPECIFIED: 0 PLC ± 1 PLC ± 2 PLC ± 3 PLC ± 4 PLC ± ANGLES FINISH ±*	APPLICATION SPEC: - WEIGHT: - MATERIAL: -	NAME: Ocean Side Feed Applicator SIZE: A1 CAGE CODE: 00779 DRAWING NO: C=2151200	RESTRICTED TO: - SCALE: 1:2 SHEET: 4 of 4 REV: J