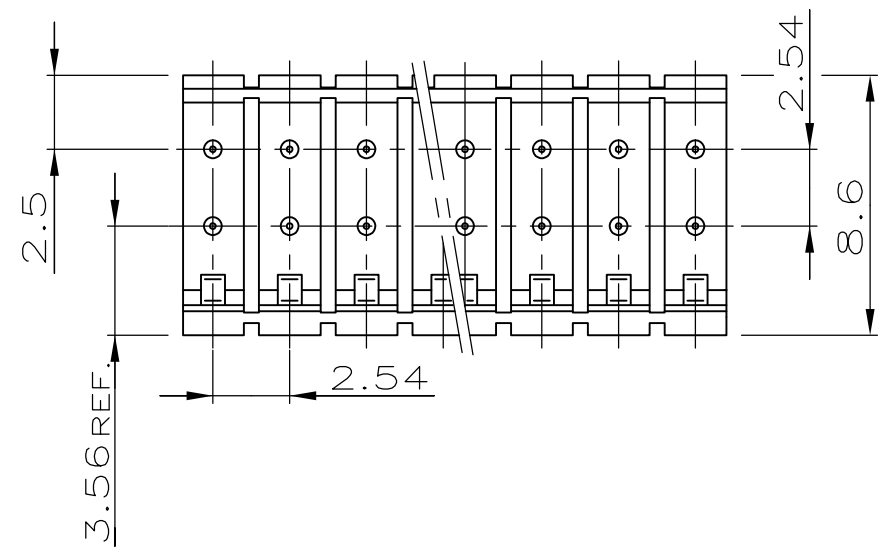
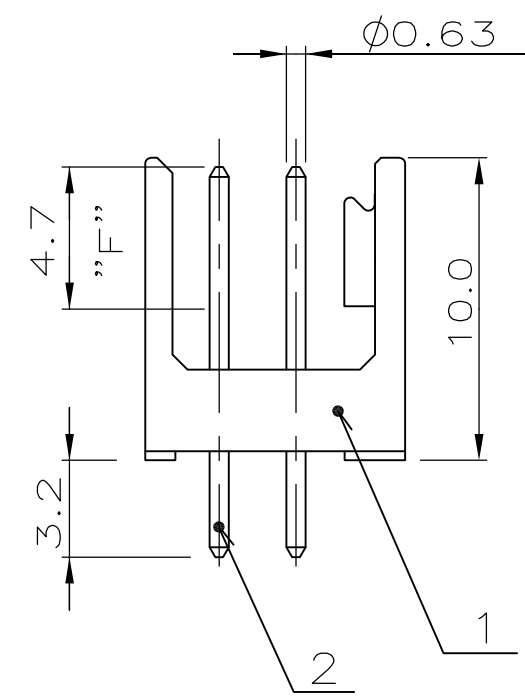
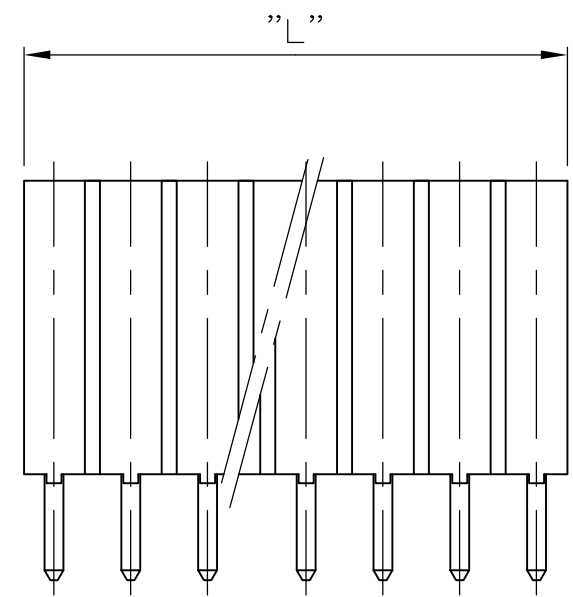


THIS DRAWING IS UNPUBLISHED. RELEASED FOR PUBLICATION
 © COPYRIGHT - By - ALL RIGHTS RESERVED.

LOC	DIST	REVISIONS					
		P	LTR	DESCRIPTION	DATE	DWN	APVD
			F	PLATING CHANGE TO PdNi + Au FLASH AT AREA F	19MAY2014	KJK	JK

POS. PER ROW "n"	L±0.4	PART NO.
2	4.58	829 538 -2
3	7.12	829 538 -3
4	9.66	829 538 -4
5	12.20	829 538 -5
6	14.74	829 538 -6
7	17.28	829 538 -7
8	19.82	829 538 -8
15	37.60	1- 829 538 -5



NOTES:

- 1 MATING SIDE AT AREA "F"
 MIN. 0.7µm PdNi + 0.1µm GOLD FLASH
 OVER 1.27µm NICKEL
 SOLDER SIDE: MIN. 3.0µm TIN OVER 1.27µm NICKEL

2	CONTACT PIN KONTAKTSTIFT	CuZn	1
1	PIN HOUSING STIFTGEHÄUSE	PA 4/6	BLACK SCHWARZ
POS.	BENENNUNG EINZELTEIL	WERKSTOFF	OBERFLÄCHE
[ITEM NO.]	[DESCRIPTION]	[MATERIAL]	FARBE
			[FINISH]

THIS DRAWING IS A CONTROLLED DOCUMENT.

DIMENSIONS:	TOLERANCES UNLESS OTHERWISE SPECIFIED:
mm	±0.2mm
	0 PLC ± -
	1 PLC ± -
	2 PLC ± -
	3 PLC ± -
	4 PLC ± -
	ANGLES ± -
MATERIAL	FINISH
SEE TABLE	SEE TABLE

DWN	MULLER	09.02.90	STE TE Connectivity				
CHK	SCHAARSCHMIDT	12.02.90					
APVD	-	-	NAME			AMPMODU II PIN HEADER, DUAL ROW	
PRODUCT SPEC	108-18012			SIZE	CAGE CODE	DRAWING NO	RESTRICTED TO
APPLICATION SPEC	-			A3	00779	C-829538	-
WEIGHT	-			SCALE	4:1	SHEET	1 OF 1
CUSTOMER DRAWING				REV	F		