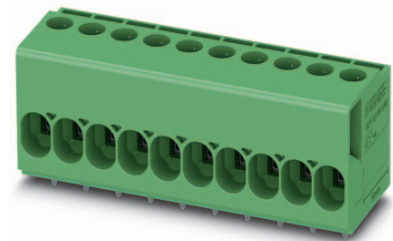


Data sheet

Order No.: 1017491

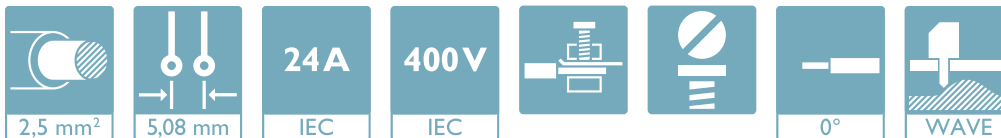
Type: TDPT 2,5/ 2-SC-5,08

PCB terminal block, Screw connection with tension sleeve



The figure shows a 10-position version of the product

1 Main features



- | | | | |
|---------------------------|--------------------------------------|------------------------|---------------------|
| • No. of pos. | 2 | • Nominal current | 24 A |
| • Conductor cross section | 2.5 mm ² | • Nominal voltage | 400 V |
| • Color | green | • Connection direction | 0 ° |
| • Pitch | 5.08 mm | • Type of packaging | packed in cardboard |
| • Connection method | Screw connection with tension sleeve | | |

2 Your advantages

- ✓ Easy to adapt, thanks to their identical size and the same pinning for Push-in spring connections as for screw connections
- ✓ Well-known connection principle allows worldwide use
- ✓ Low temperature rise, thanks to maximum contact force



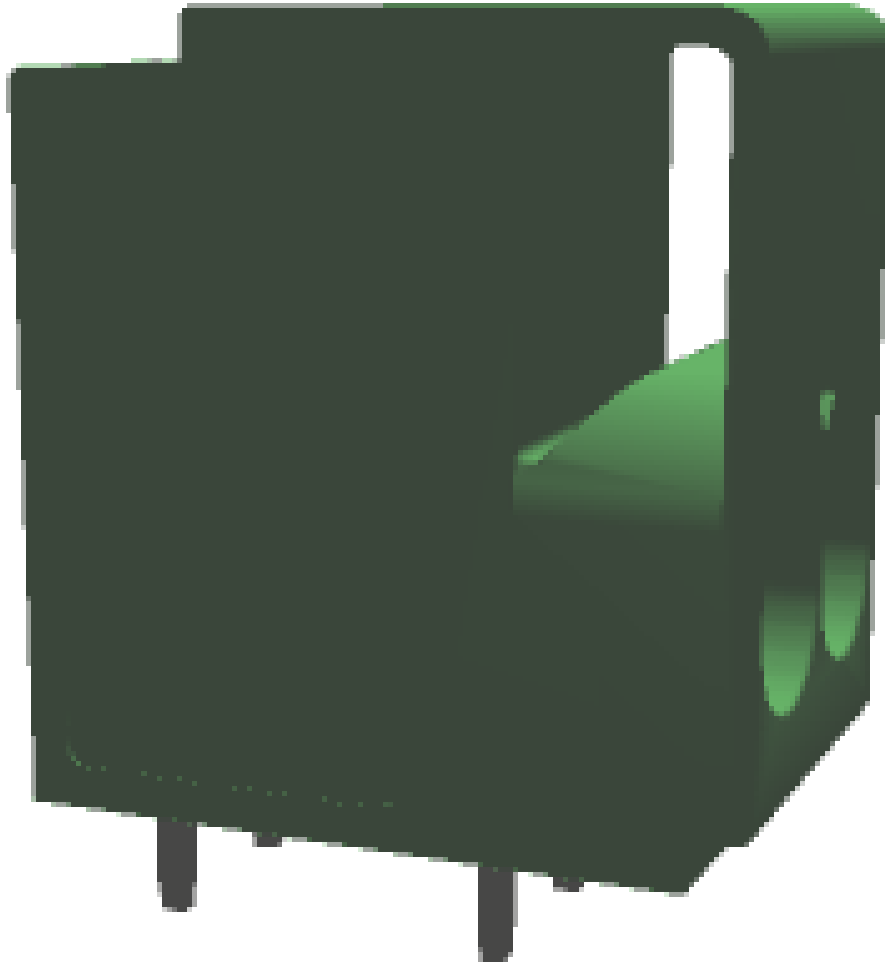
Make sure you always use the latest documentation.

It can be downloaded at: phoenixcontact.net/product/1017491

3 Table of contents

| | | |
|----|---|---|
| 1 | Main features..... | 1 |
| 2 | Your advantages | 1 |
| 3 | Table of contents | 2 |
| 4 | 3D model in PDF can be activated (Acrobat Reader only)..... | 3 |
| 5 | item properties..... | 4 |
| | 5.1 Connection capacity | 4 |
| | 5.2 Material data | 4 |
| 6 | Dimensions..... | 4 |
| | 6.1 Dimensions for the product | 4 |
| | 6.2 Dimensions for PCB design..... | 5 |
| 7 | Series drawing..... | 6 |
| 8 | Packaging information | 7 |
| 9 | Application..... | 7 |
| | 9.1 Temperature limit values | 7 |
| | 9.2 Electrical data | 7 |
| 10 | Approvals | 7 |
| 11 | Commercial Data..... | 8 |
| 12 | Accessories..... | 8 |

4 3D model in PDF can be activated (Acrobat Reader only)



1017491 TDPT 2,5/ 2-SC-5,08**5 item properties**

| | |
|-----------------------|--------------------------------------|
| Order No. | 1017491 |
| Type | TDPT 2,5/ 2-SC-5,08 |
| Range of articles | TDPT 2,5/..-SC |
| Pitch | 5.08 mm |
| Number of positions | 2 |
| Connection method | Screw connection with tension sleeve |
| Drive form screw head | Slotted (L) |
| Mounting type | Wave soldering |
| Pin layout | Linear double pinning |

5.1 Connection capacity

| | |
|--|---|
| Conductor cross section, solid | 0.2 mm ² to 4 mm ² |
| Conductor cross section, flexible | 0.2 mm ² to 2.5 mm ² |
| Conductor cross section AWG/kcmil | 24 to 12 |
| 2 conductors with same cross section, solid | 0.2 mm ² to 1.5 mm ² |
| 2 conductors with same cross section, stranded | 0.2 mm ² to 1.5 mm ² |
| Conductor cross section flexible, with ferrule without plastic sleeve | 0.2 mm ² to 2.5 mm ² |
| Conductor cross section flexible, with ferrule with plastic sleeve | 0.2 mm ² to 2.5 mm ² |
| 2 conductors with same cross section, stranded, with TWIN ferrules with plastic sleeve | 0.5 mm ² to 0.75 mm ² |
| Stripping length | 10 mm |

5.2 Material data

| | | |
|--|---|----------------|
| Material of metal parts | | |
| Note | WEEE/RoHS-compliant, whisker-free acc. to IEC 60068-2-82/JEDEC JESD 201 | |
| Contact material | Cu alloy | |
| Surface characteristics | hot-dip tin-plated | |
| Insulating material data | Housing | Housing |
| Insulating material | | |
| CTI according to IEC 60112 | | |
| Flammability rating according to UL 94 | | |
| Color | green (6021) | |

6 Dimensions**6.1 Dimensions for the product**

| | |
|-----------------------------|----------|
| Length | 18 mm |
| Width | 10.96 mm |
| Height (without solder pin) | 19 mm |
| Total height | 22.5 mm |
| Solder pin [P] | 3.5 mm |
| Dimension a | 5.08 mm |

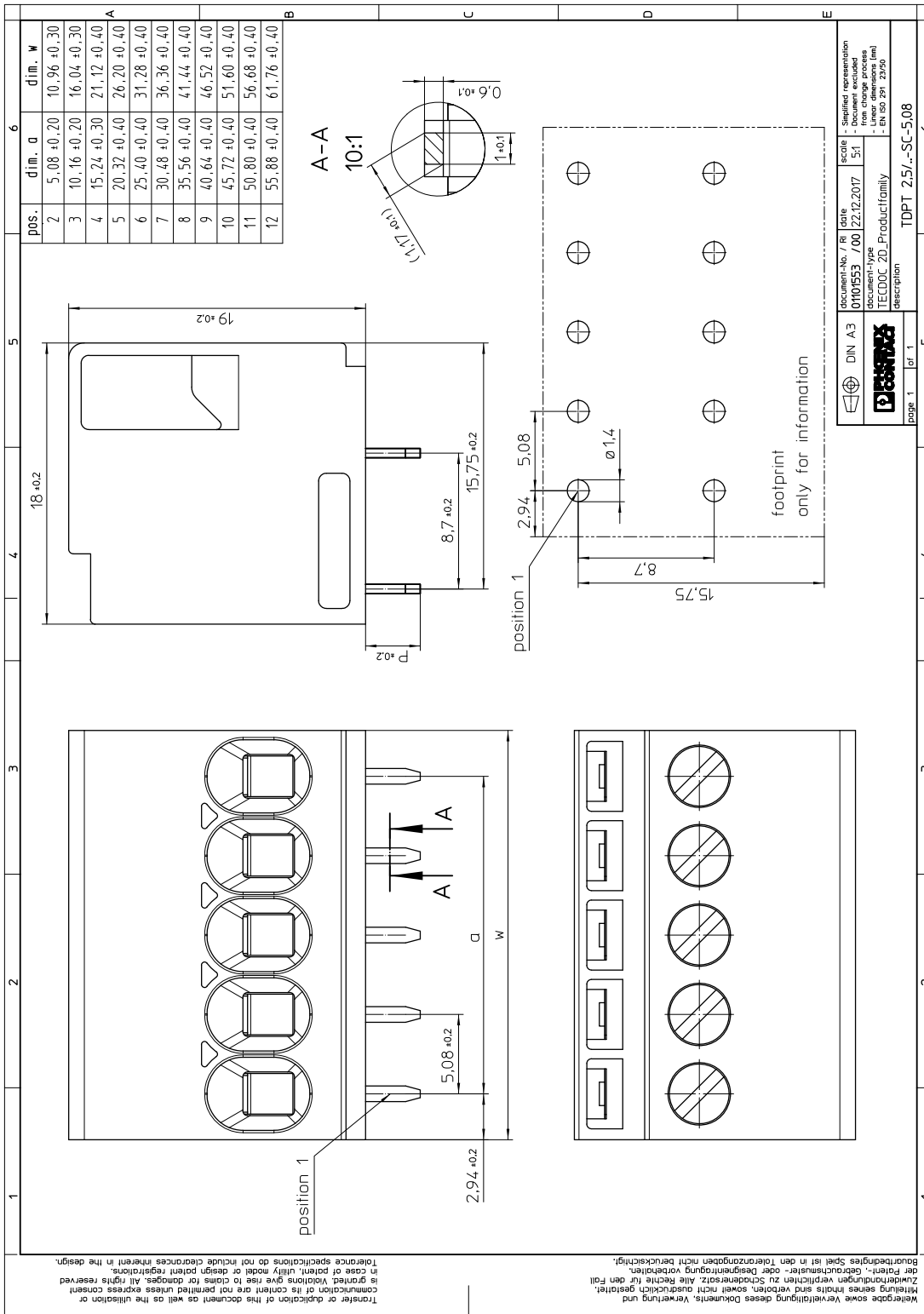
1017491 TDPT 2,5/ 2-SC-5,08

6.2 Dimensions for PCB design

| | |
|----------------|------------|
| Hole diameter | 1.4 mm |
| Pin dimensions | 1 x 0,6 mm |
| Pin spacing | 8.7 mm |

1017491 TDPT 2,5/ 2-SC-5,08

7 Series drawing



1017491 TDPT 2,5/ 2-SC-5,08**8 Packaging information**

| | |
|--------------------|---------------------|
| Type of packaging | packed in cardboard |
| Pieces per package | 50 |

9 Application**9.1 Temperature limit values**

Ambient temperature (storage/transport)

9.2 Electrical data

| | |
|---|----------------------------|
| Rated current / conductor cross section | 24 A / 2.5 mm ² |
| Rated insulation voltage (III/2) | 400 V |
| Rated surge voltage (III/2) | 4 kV |
| Contact resistance | |
| Degree of pollution | 2 |

10 Approvals

1017491 TDPT 2,5/ 2-SC-5,08**11 Commercial Data**

| | |
|--------------------|--|
| Order No. | 1017491 |
| Type | TDPT 2,5/ 2-SC-5,08 |
| Pieces per package | 50 |
| Net weight | 4.762 g |
| GTIN | 4055626500362 |
| | Information that applies locally, see link on page 1 |
| Country of origin | Information that applies locally, see link on page 1 |

12 Accessories

| Description | Order No. | Type |
|---|-----------|---------------|
| Actuation tool, for ST terminal blocks, also suitable for use as a bladed screwdriver, size: 0.6 x 3.5 x 100 mm, 2-component grip, with non-slip grip | 1204517 | SZF 1-0,6X3,5 |