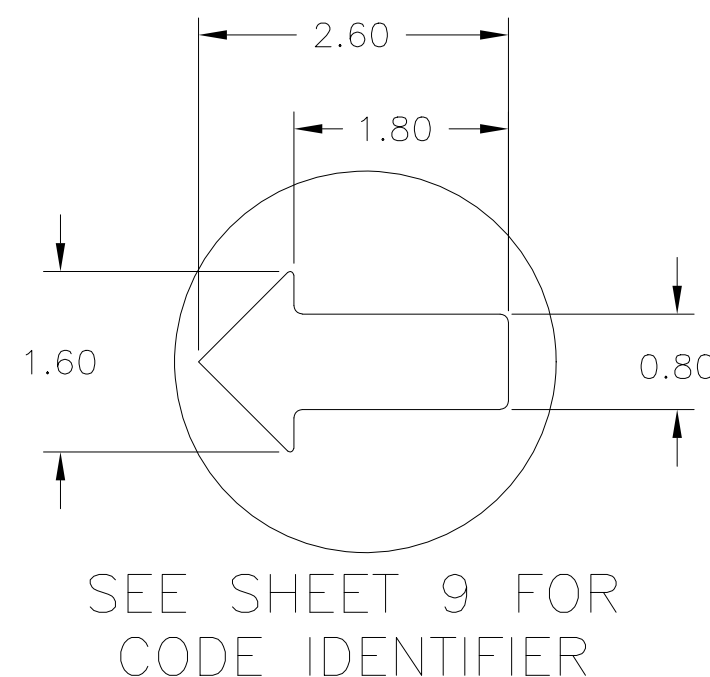
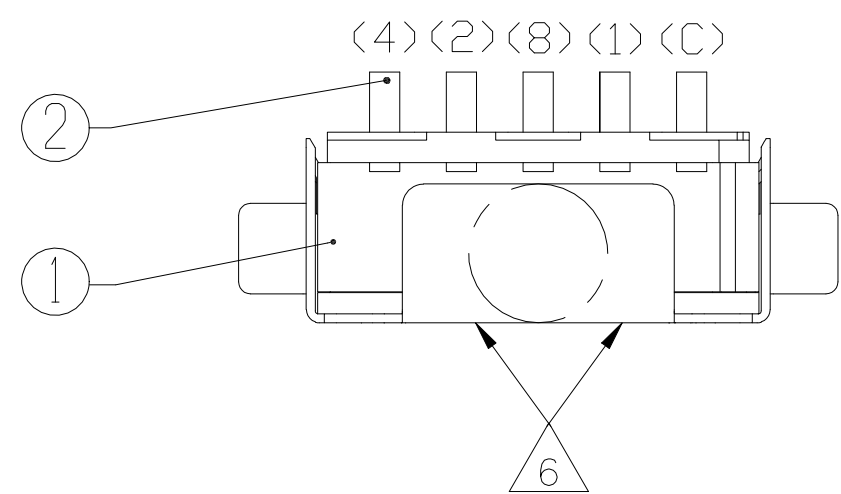
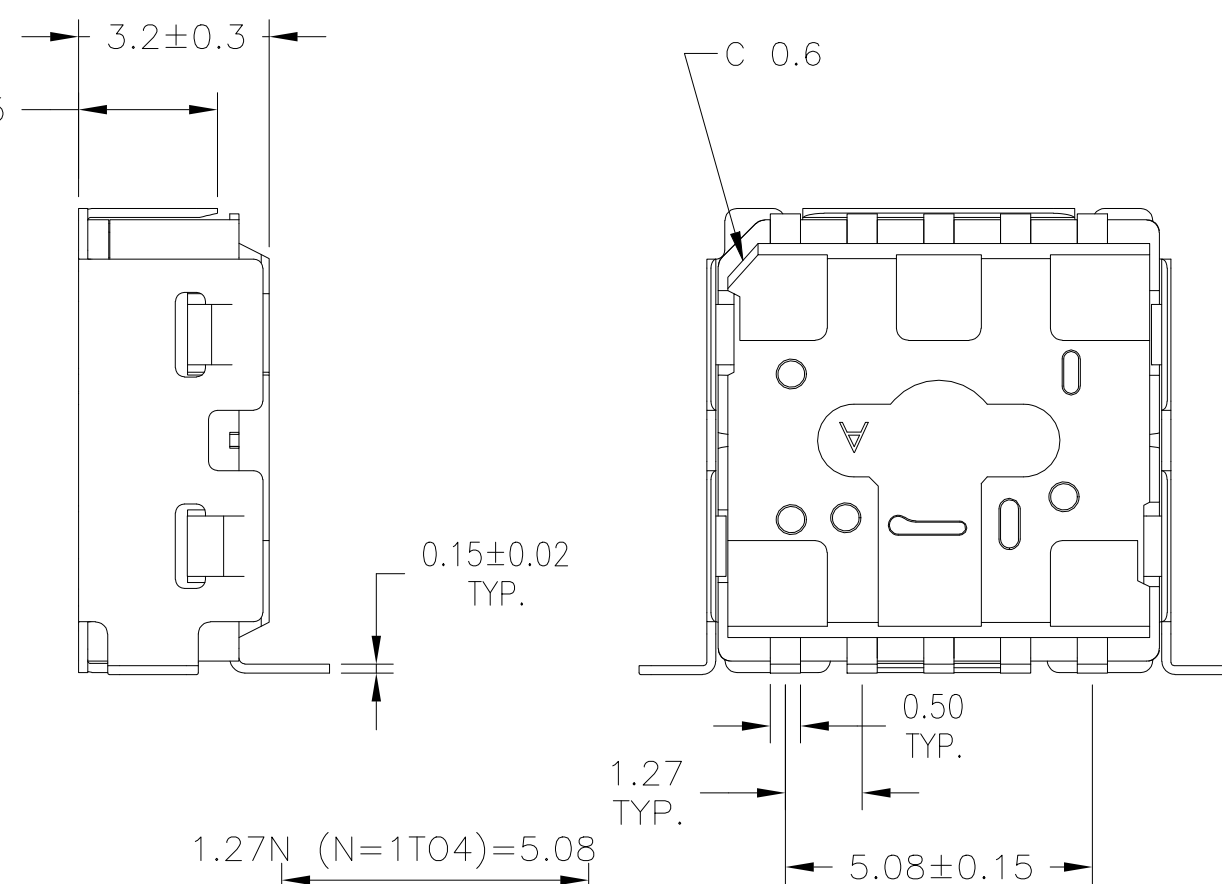
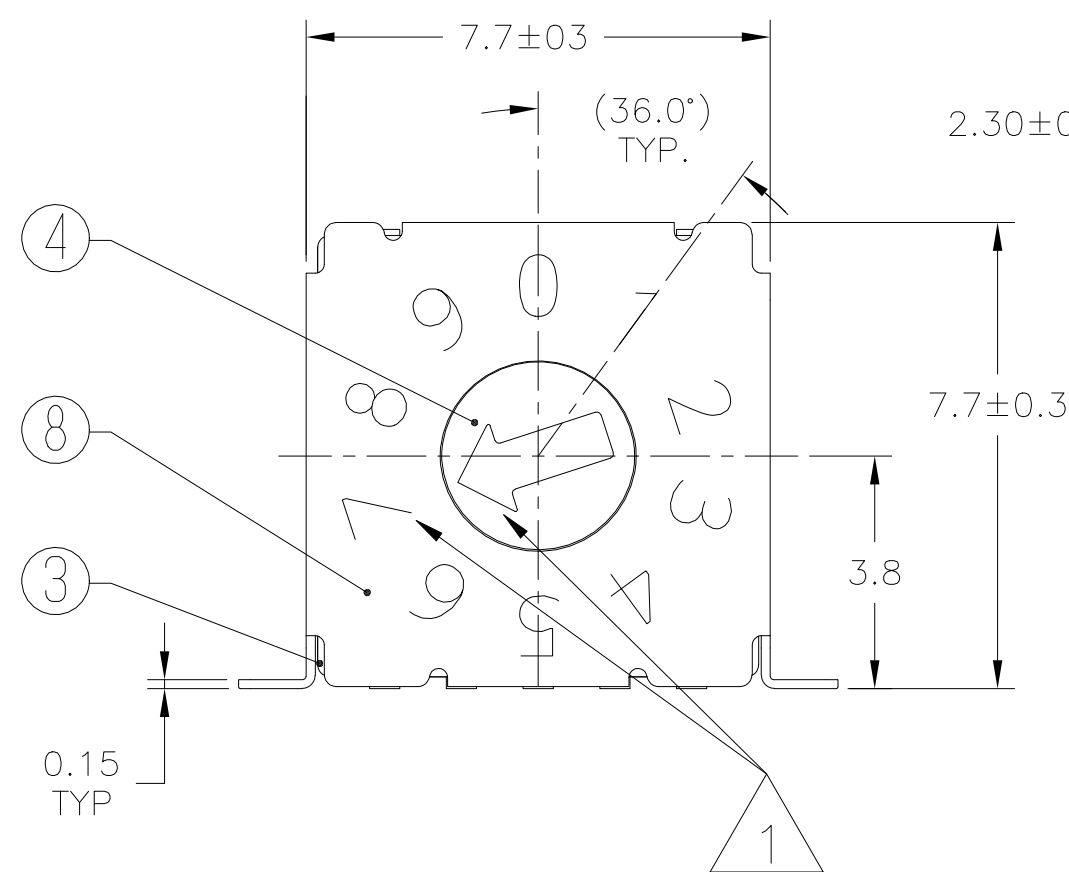


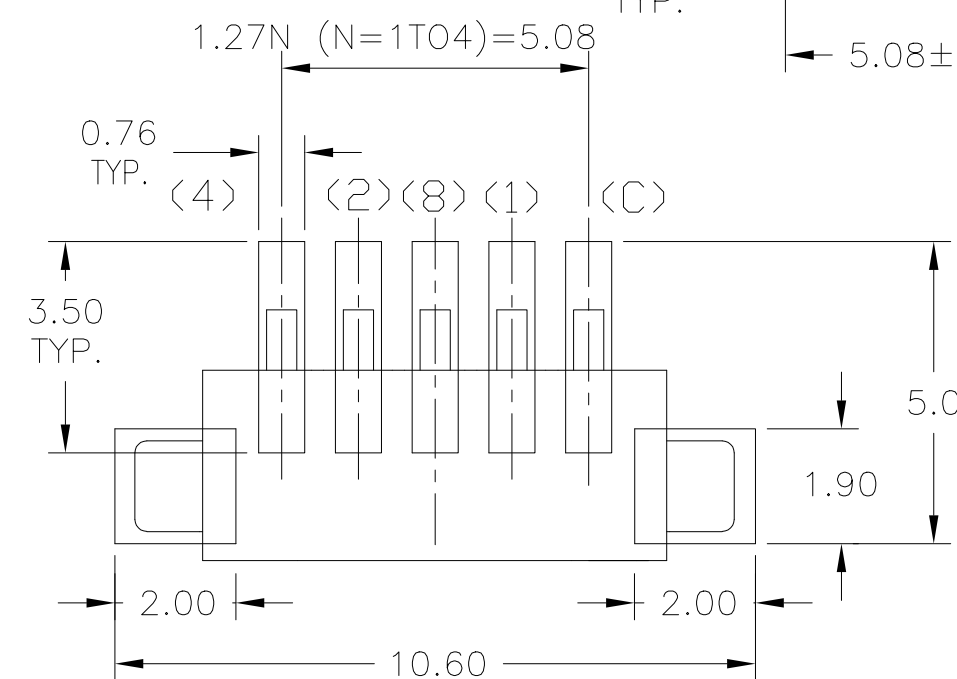
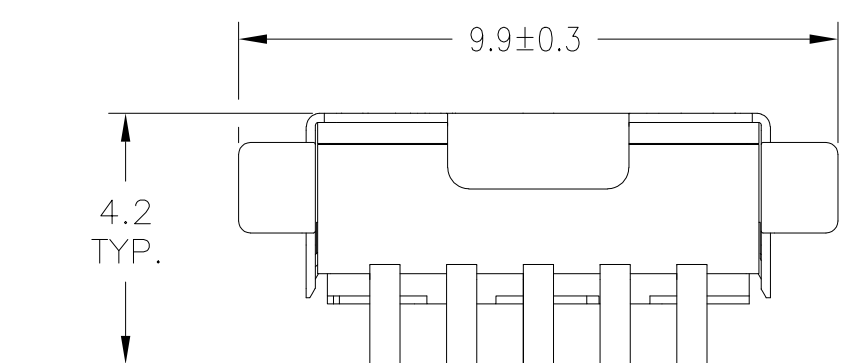
REVISIONS				
P	LTR	DESCRIPTION	DATE	APVD
1		NEW DRAWING	19JUL2022	GSK AS



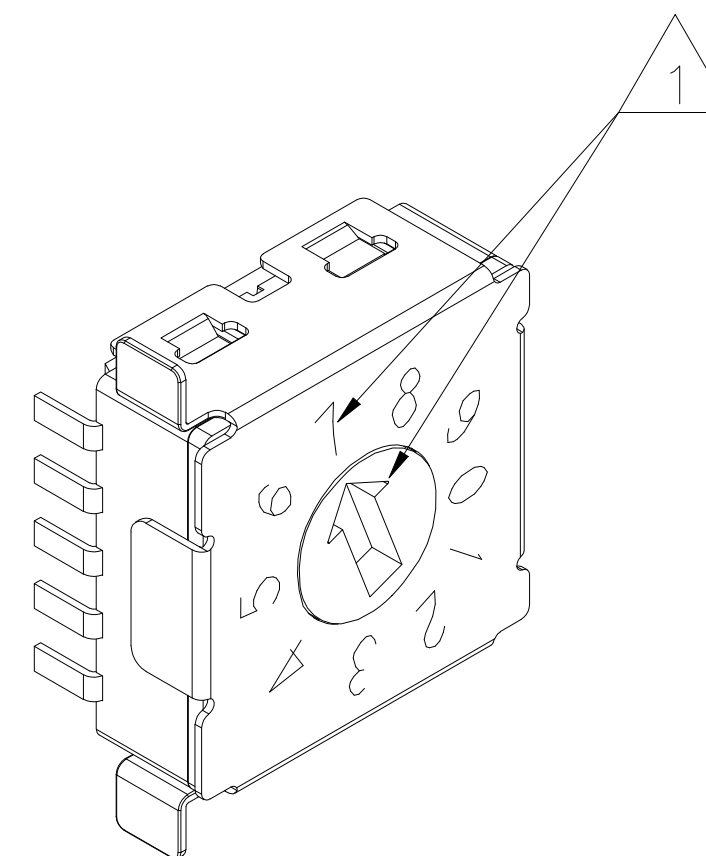
SEE SHEET 9 FOR CODE IDENTIFIER



CODE BINARY
 (COMPLEMENT/GRAY/REAL)
 GULLWING TERMINALS
 BRACKET STAINLESS STEEL
 LASER MARKING
 10 POSITION



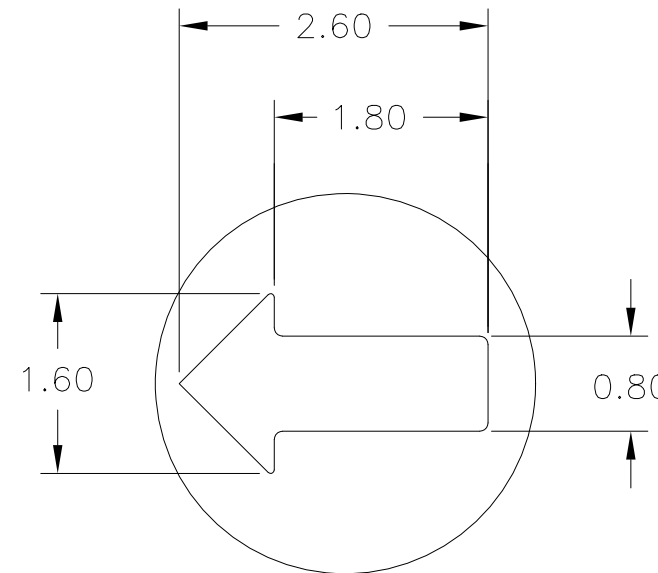
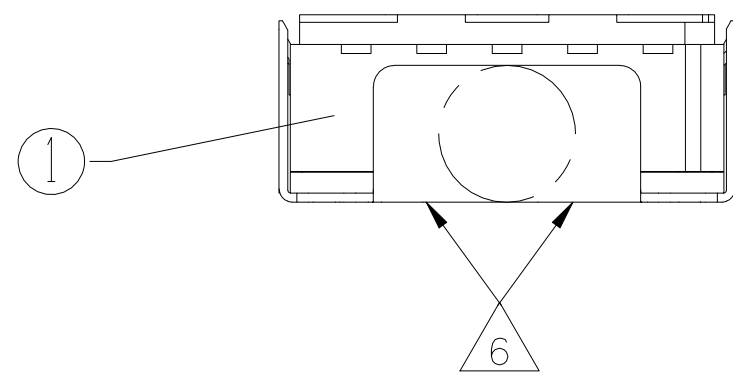
PCB Layout



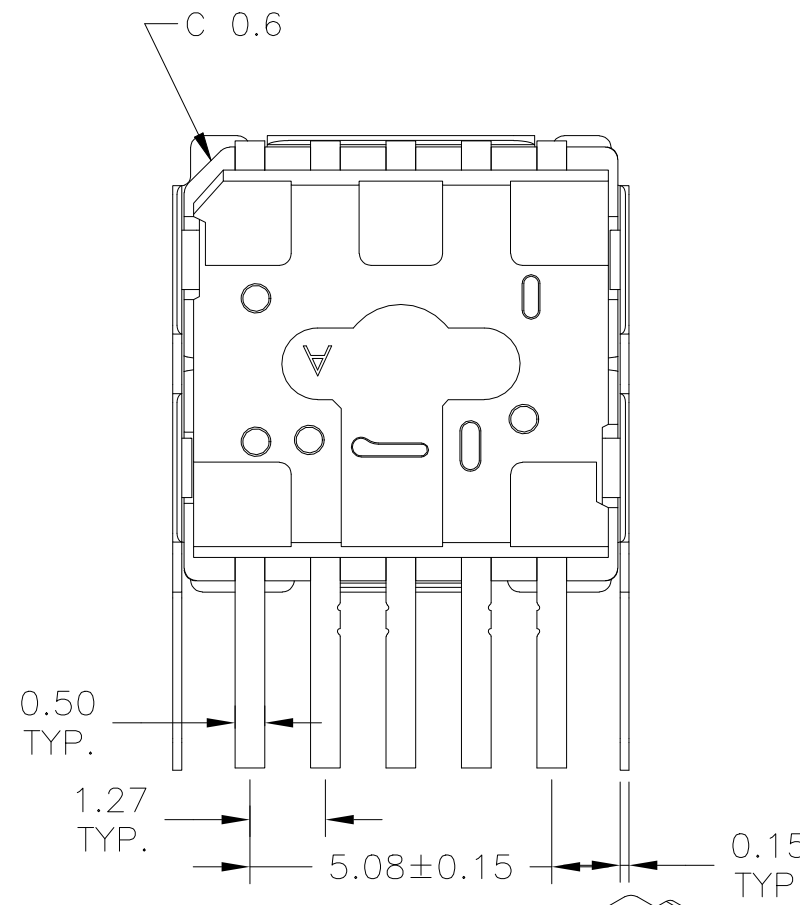
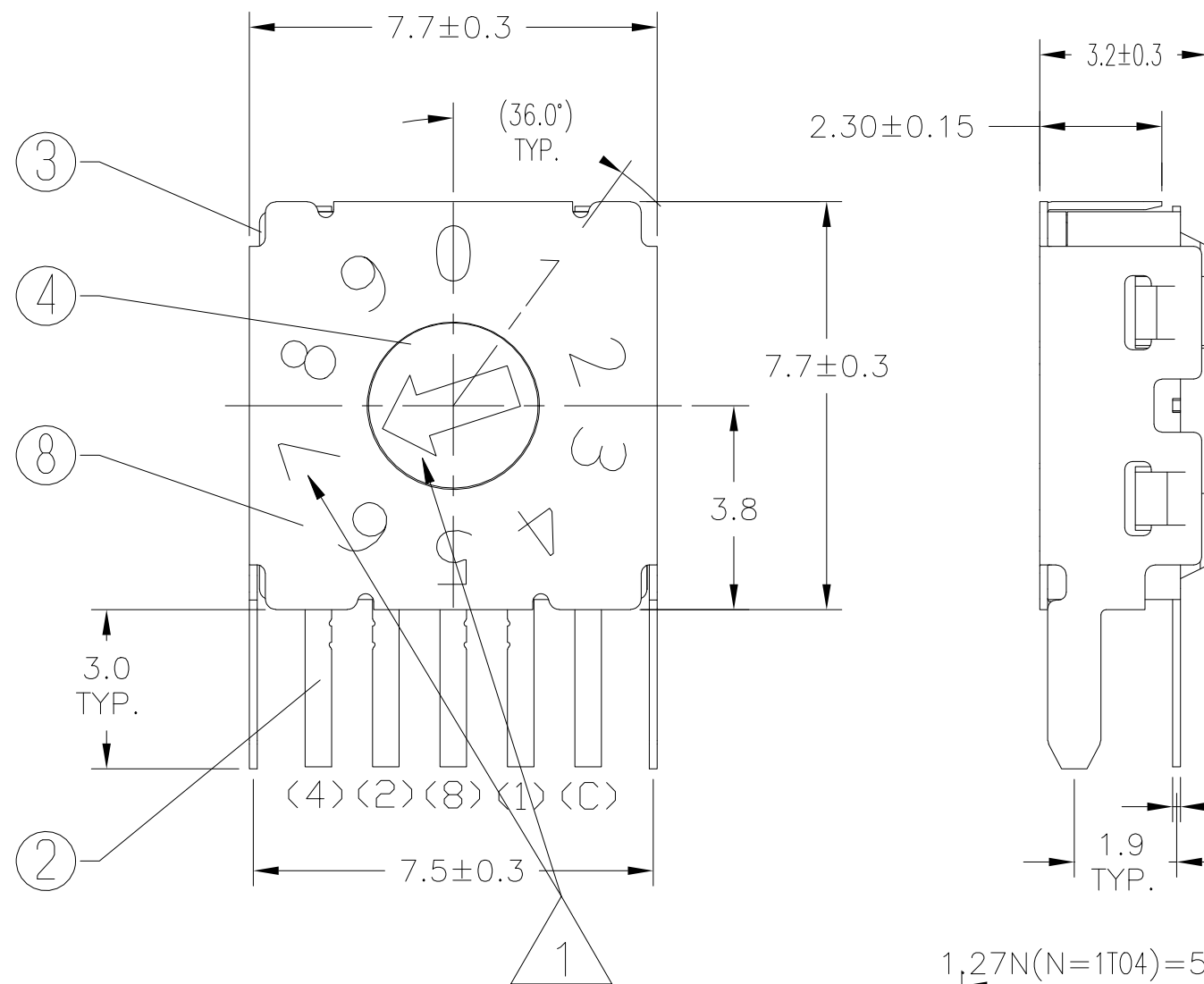
PRELIMINARY

THIS DRAWING IS A CONTROLLED DOCUMENT.		DWN 09AUG2021 SATHISH KUMAR G	TE Connectivity	
DIMENSIONS: mm		CHK 09AUG2021 ALEXANDER, SHARPE		
TOLERANCES UNLESS OTHERWISE SPECIFIED: ±0.15		APVD 09AUG2021 ALEXANDER, SHARPE	NAME MRSS, MINIATURE ROTARY SWITCH SERIES,HORIZONTAL,1.27, S,STEEL, LASER MARKING	
0 PLC ± = 1 PLC ± = 2 PLC ± = 3 PLC ± = 4 PLC ± = ANGLES ± =		PRODUCT SPEC	APPLICATION SPEC	
MATERIAL		FINISH	WEIGHT	RESTRICTED TO
			A2 00779	SIZE CAGE CODE DRAWING NO C=2396236
CUSTOMER DRAWING		SCALE NTS	SHEET 1 of 9	REV 1

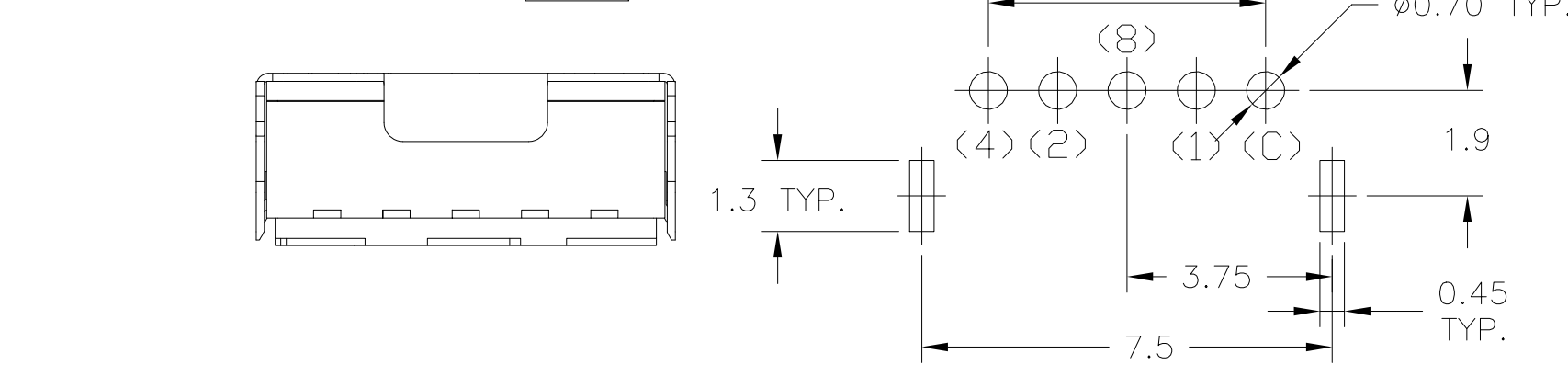
REVISIONS					
P	LTR	DESCRIPTION	DATE	DWN	APVD
-	-	SEE SHEET 1	-	-	-



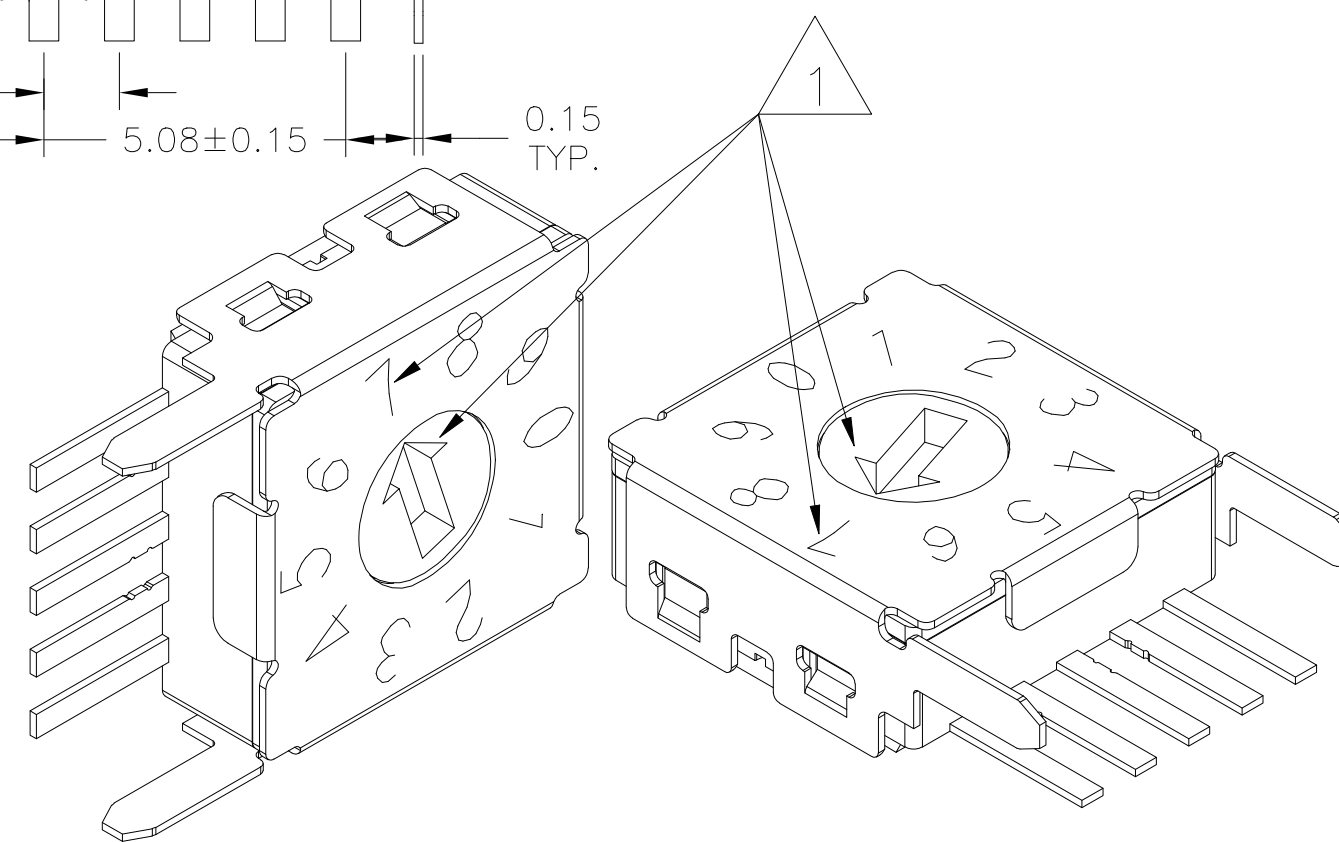
SEE SHEET 9 FOR CODE IDENTIFIER



CODE BINARY
 (COMPLEMENT/GRAY/REAL)
 THROUGH-HOLE TERMINALS
 BRACKET STAINLESS STEEL
 LASER MARKING
 10 POSITION



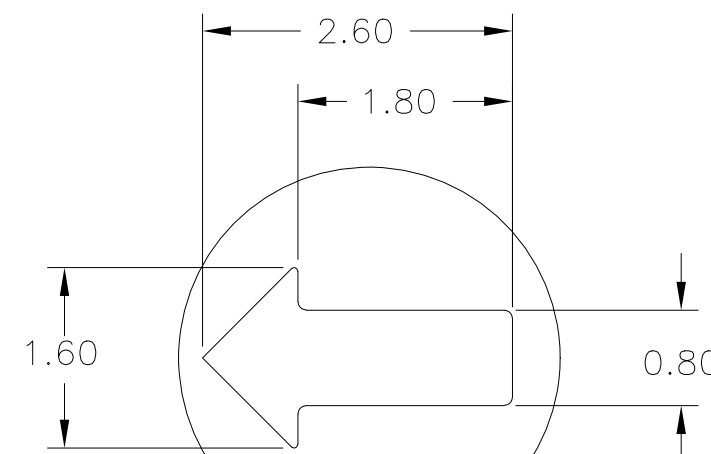
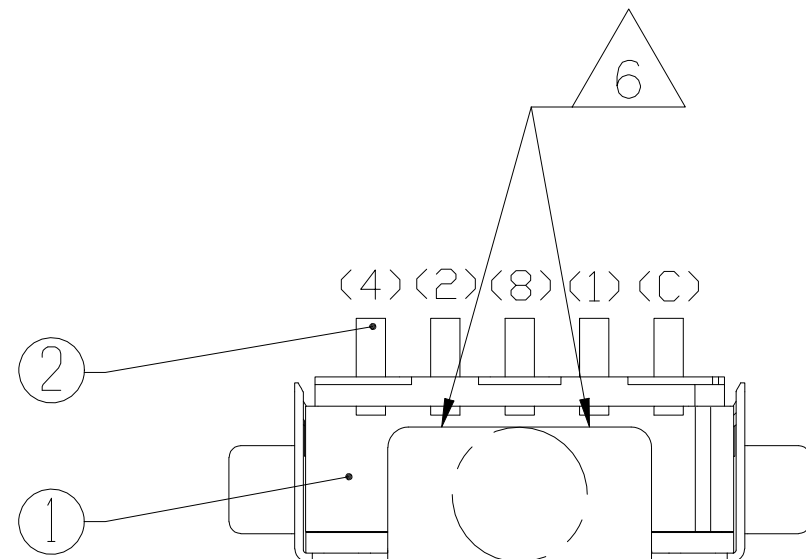
PCB Layout



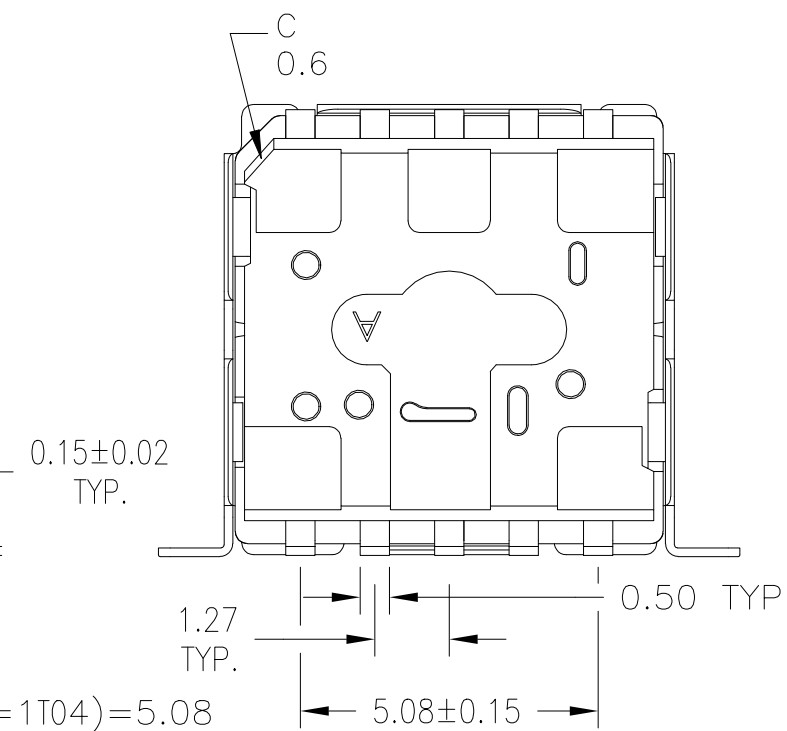
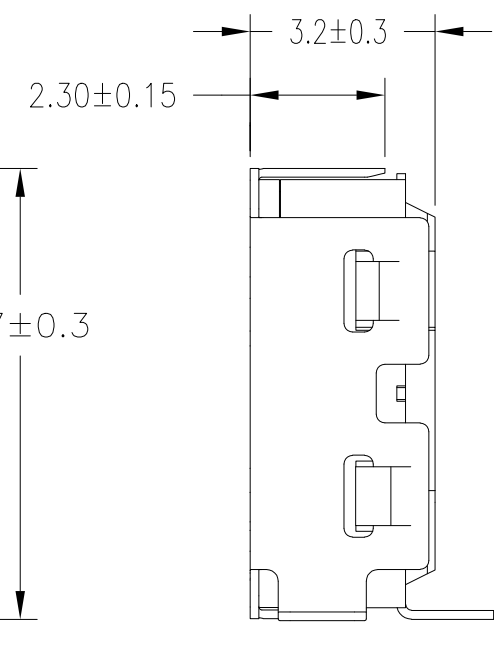
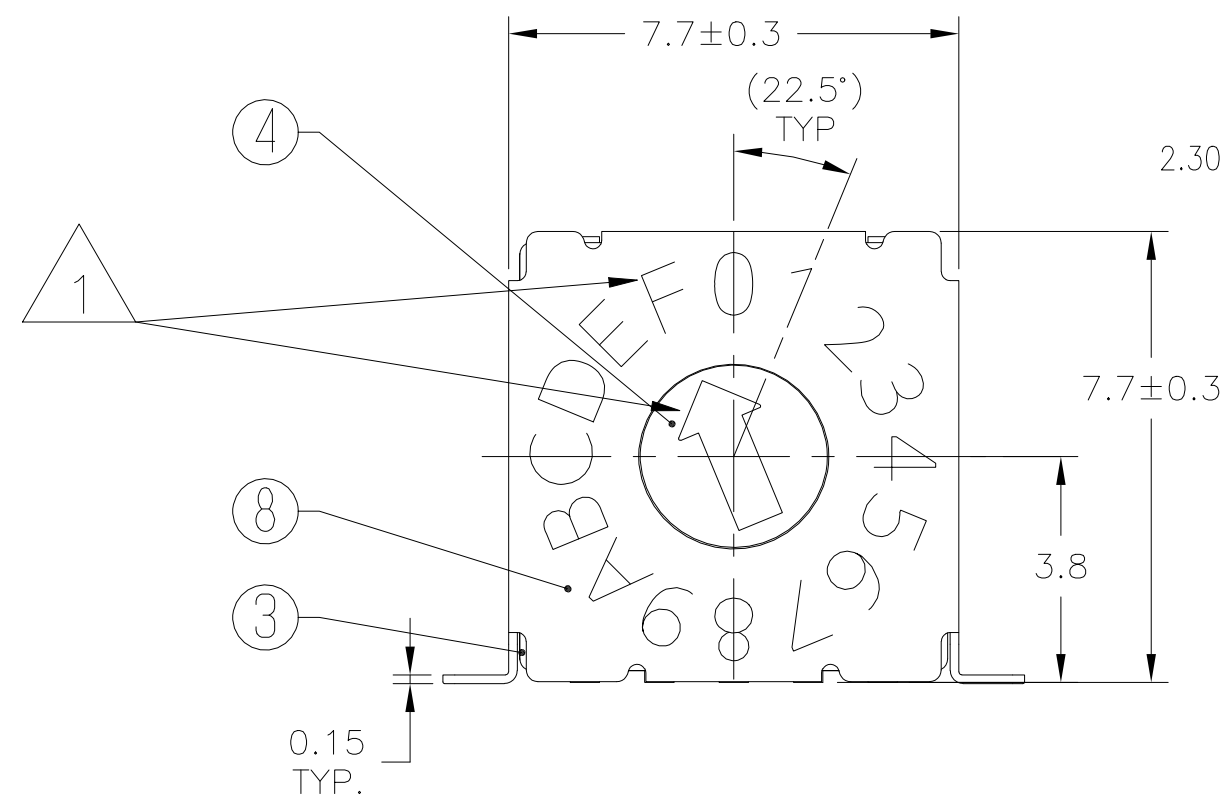
PRELIMINARY

THIS DRAWING IS A CONTROLLED DOCUMENT.		DWN SATHISH KUMAR_G 09AUG2021		
DIMENSIONS: mm		CHK ALEXANDER, SHARPE 09AUG2021		
TOLERANCES UNLESS OTHERWISE SPECIFIED: ±0.15		APVD ALEXANDER, SHARPE 09AUG2021	NAME MRSS, MINIATURE ROTARY SWITCH SERIES,HORIZONTAL,1.27, S,STEEL, LASER MARKING	
		PRODUCT SPEC	APPLICATION SPEC	
MATERIAL		FINISH	WEIGHT	RESTRICTED TO
-		-	-	SIZE A2
-		-	-	CAGE CODE 00779
-		-	-	DRAWING NO C=2396236
-		-	-	SCALE NTS
-		-	-	SHEET 2 of 9
-		-	-	REV 1
-		-	-	CUSTOMER DRAWING

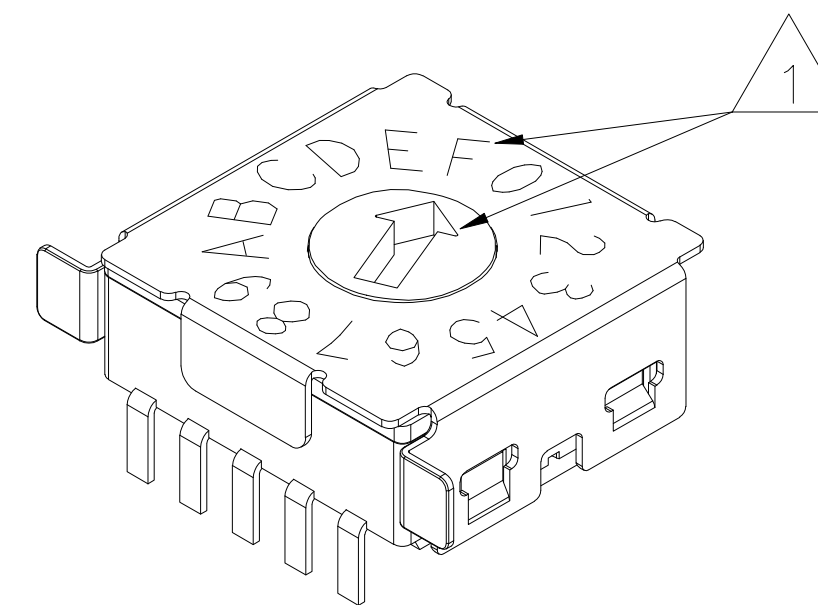
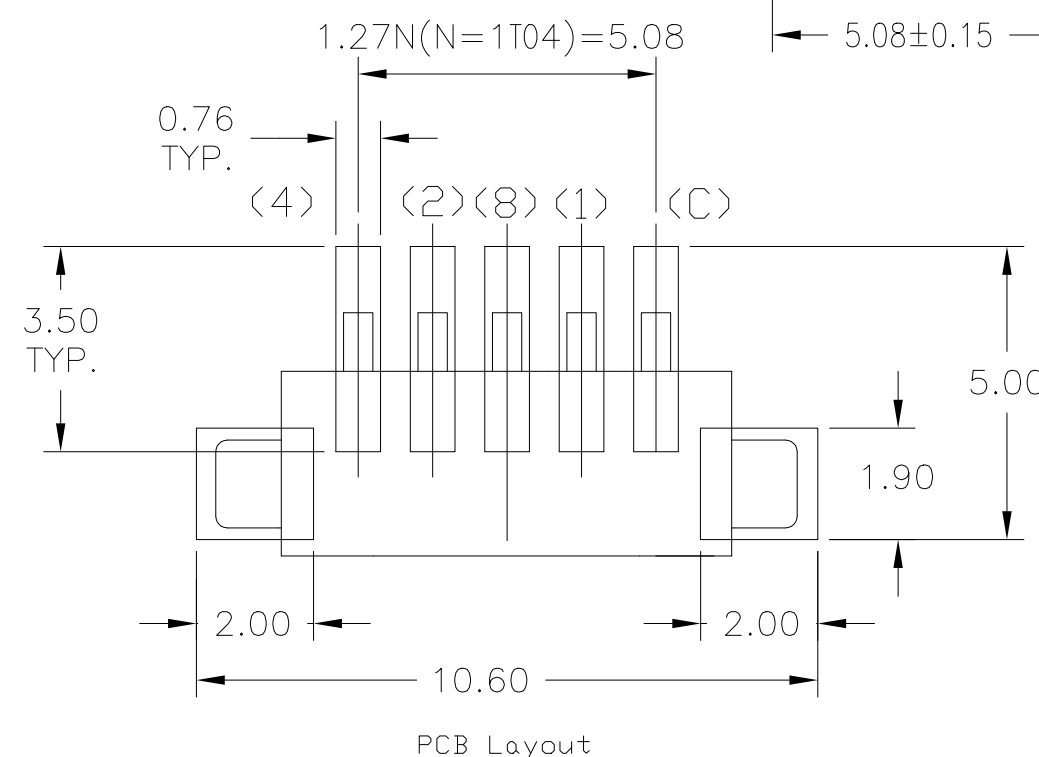
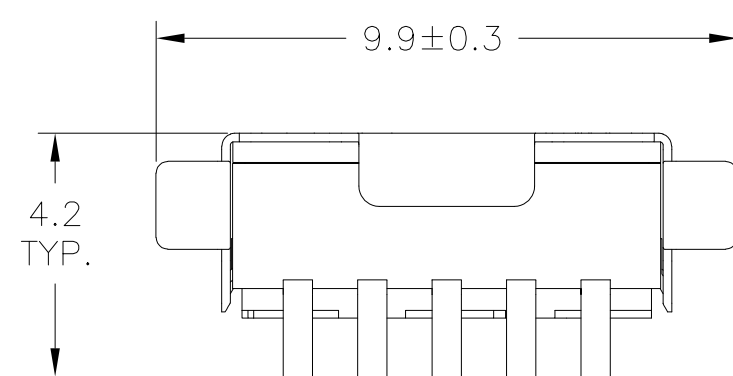
REVISIONS					
P	LTR	DESCRIPTION	DATE	DWN	APVD
-	-	SEE SHEET 1	-	-	-



SEE SHEET 9 FOR
CODE IDENTIFIER



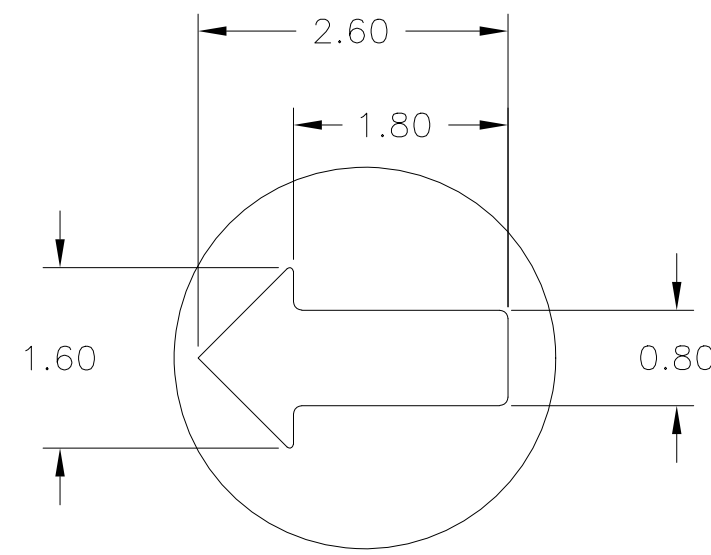
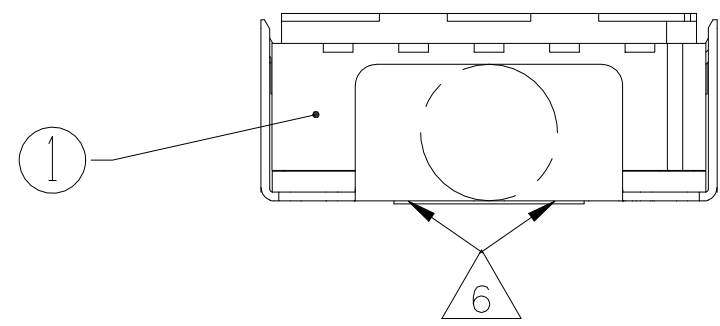
CODE HEXADECIMAL
(COMPLEMENT/GRAY/REAL)
GULLWING TERMINALS
BRACKET STAINLESS STEEL
LASER MARKING
16 POSITION



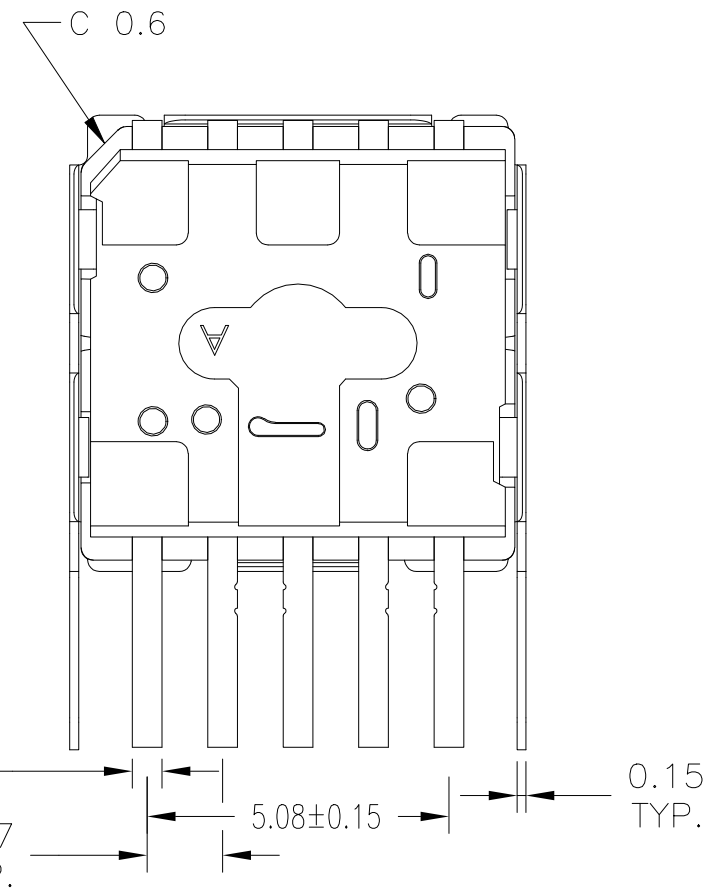
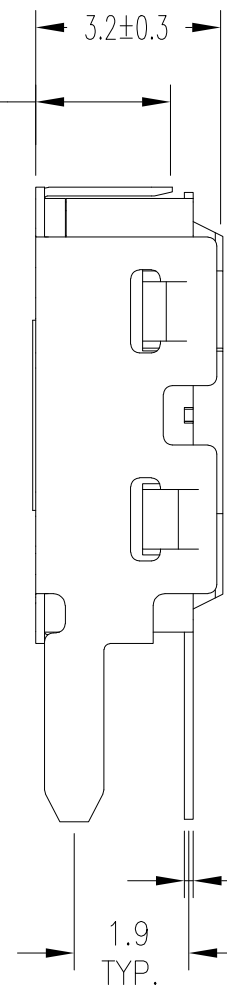
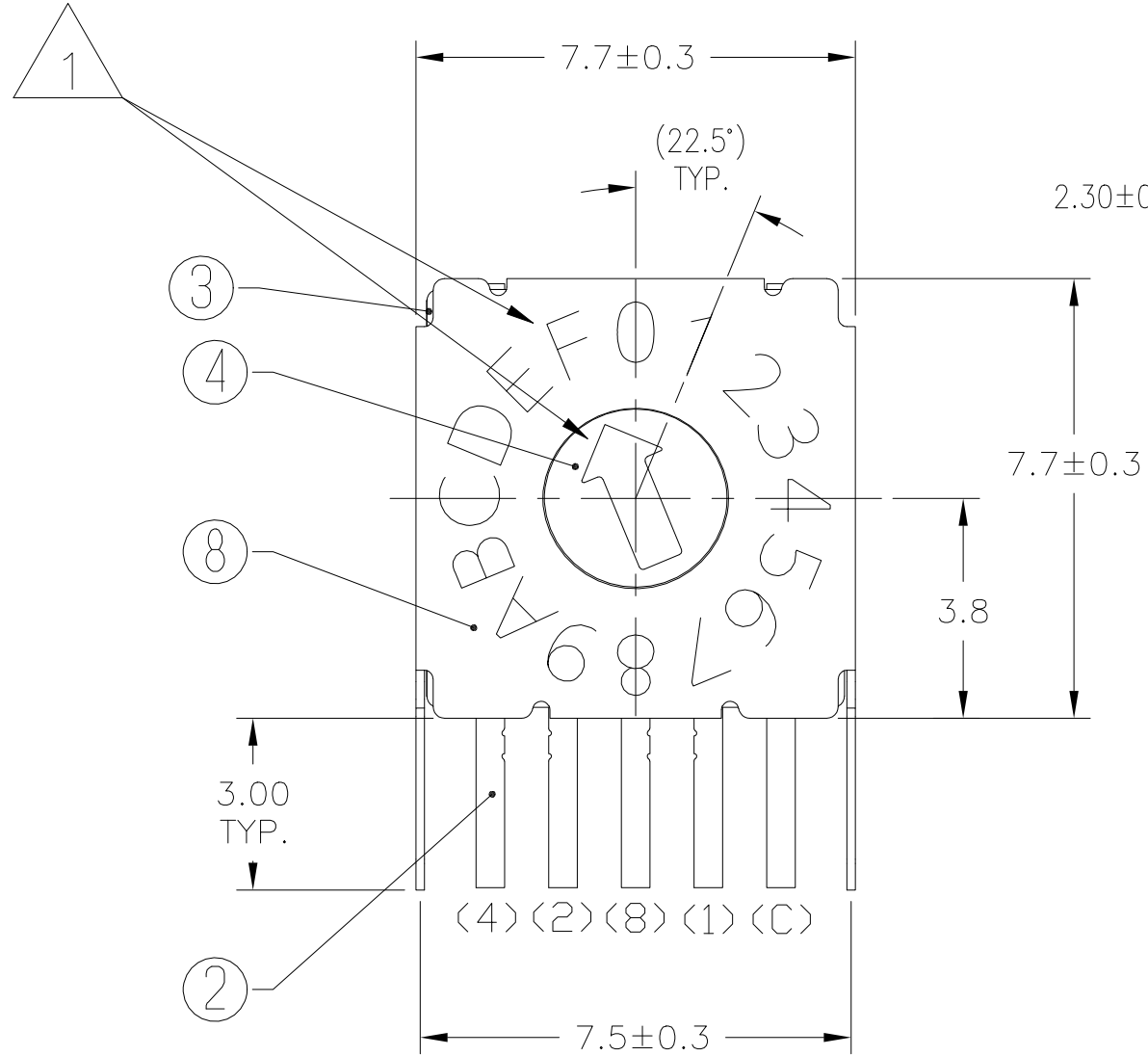
PRELIMINARY

THIS DRAWING IS A CONTROLLED DOCUMENT.		DWN 09AUG2021 SATHISH KUMAR G			
DIMENSIONS: mm		CHK 09AUG2021 ALEXANDER, SHARPE			
TOLERANCES UNLESS OTHERWISE SPECIFIED: ±0.15		APVD 09AUG2021 ALEXANDER, SHARPE		NAME MRSS, MINIATURE ROTARY SWITCH SERIES,HORIZONTAL,1.27, S,STEEL, LASER MARKING	
0 PLC ± - 1 PLC ± - 2 PLC ± - 3 PLC ± - 4 PLC ± - ANGLES ± -		PRODUCT SPEC		APPLICATION SPEC	
MATERIAL		FINISH		WEIGHT	
				SCALE NTS	
		CUSTOMER DRAWING		SHEET 3 of 9	
				REV 1	

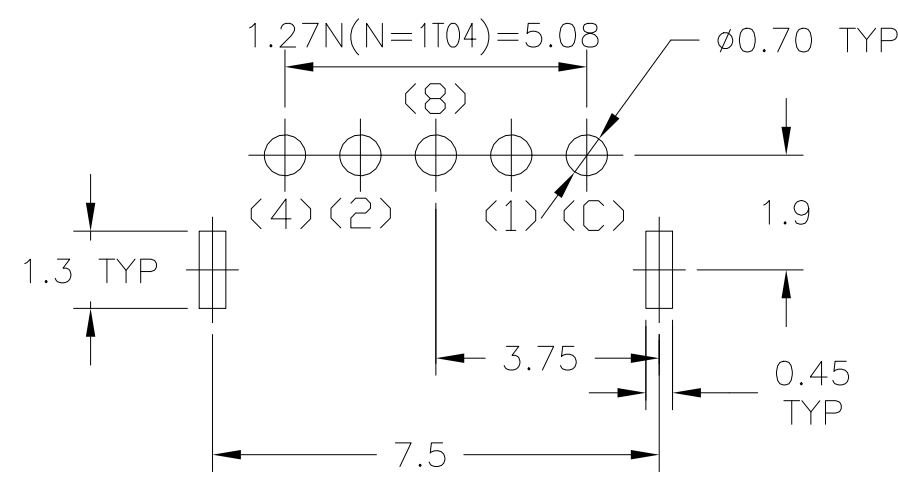
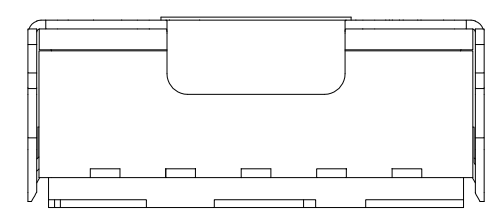
REVISIONS					
P	LTR	DESCRIPTION	DATE	DWN	APVD
-	-	SEE SHEET 1	-	-	-



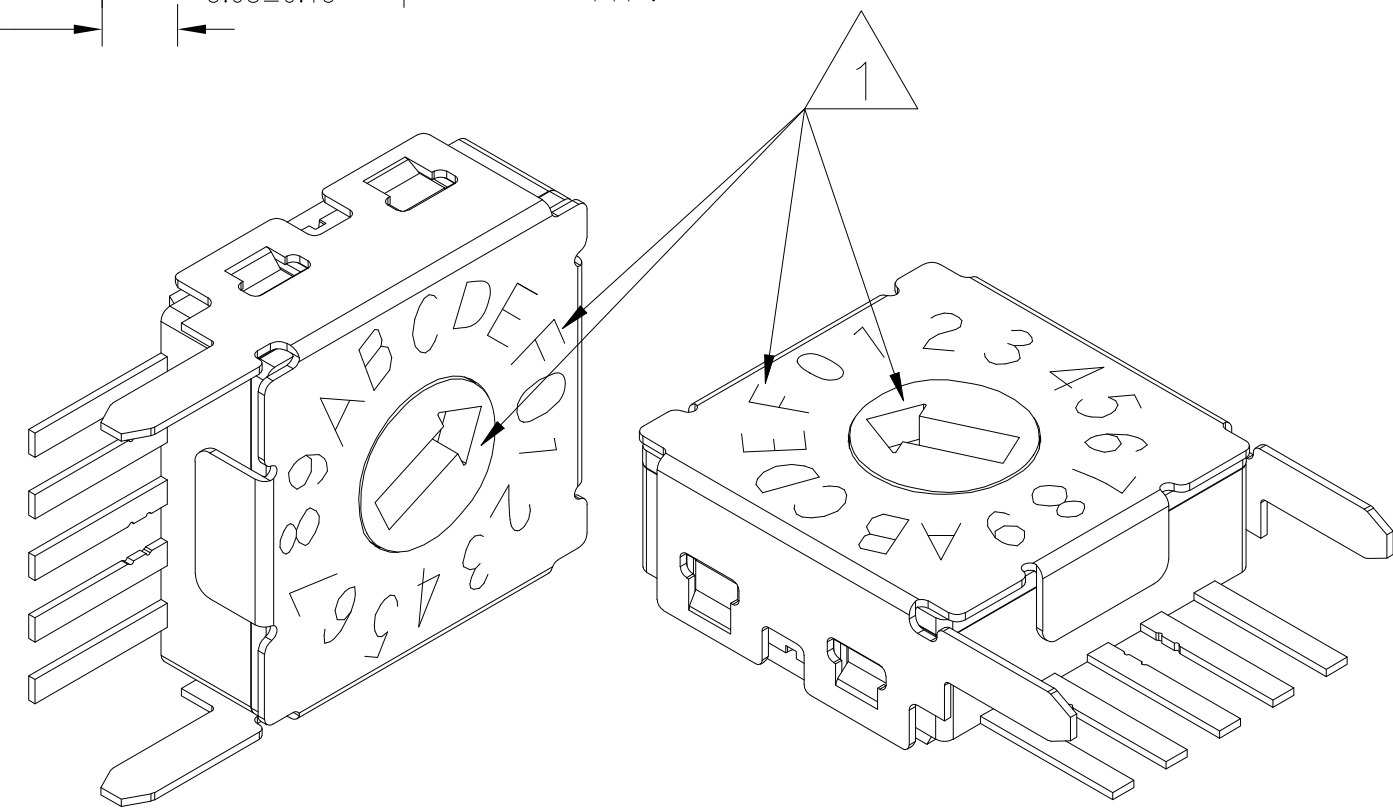
SEE SHEET 9 FOR CODE IDENTIFIER



CODE HEXADECIMAL
 (COMPLEMENT/GRAY/REAL)
 THROUGH-HOLE TERMINALS
 BRACKET STAINLESS STEEL
 LASER MARKING
 16 POSITION



PCB Layout



PRELIMINARY

THIS DRAWING IS A CONTROLLED DOCUMENT.		DWN 09AUG2021 SATHISH KUMAR G	TE TE Connectivity	
DIMENSIONS: mm		CHK 09AUG2021 ALEXANDER, SHARPE		
TOLERANCES UNLESS OTHERWISE SPECIFIED: ±0.15		APVD 09AUG2021 ALEXANDER, SHARPE	NAME MRSS, MINIATURE ROTARY SWITCH SERIES,HORIZONTAL,1.27, S,STEEL, LASER MARKING	
0 PLC ± = 1 PLC ± = 2 PLC ± = 3 PLC ± = 4 PLC ± = ANGLES ± =		PRODUCT SPEC	APPLICATION SPEC	
MATERIAL		FINISH	WEIGHT	RESTRICTED TO
			A2 00779 C=2396236	SCALE NTS SHEET 4 of 9 REV 1
CUSTOMER DRAWING				

REVISIONS					
P	LTR	DESCRIPTION	DATE	DWN	APVD
-	-	SEE SHEET 1	-	-	-

10 POSITION, BINARY COMPLEMENT										
POS	0	1	2	3	4	5	6	7	8	9
C	X	X	X	X	X	X	X	X	X	X
1	X		X		X		X		X	
2	X	X			X	X			X	X
4	X	X	X	X					X	X
8	X	X	X	X	X	X	X	X		

16 POSITION, HEXADECIMAL COMPLEMENT																
POS	0	1	2	3	4	5	6	7	8	9	A	B	C	D	E	F
C	X	X	X	X	X	X	X	X	X	X	X	X	X	X	X	X
1	X		X		X		X		X		X		X		X	
2	X	X			X	X			X	X			X	X		
4	X	X	X	X					X	X	X	X				
8	X	X	X	X	X	X	X	X								

10 POSITION, BINARY GRAY										
POS	0	1	2	3	4	5	6	7	8	9
C	X	X	X	X	X	X	X	X	X	X
1		X	X			X	X			X
2			X	X	X	X				
4					X	X	X	X	X	X
8									X	X

16 POSITION, HEXADECIMAL GRAY																
POS	0	1	2	3	4	5	6	7	8	9	A	B	C	D	E	F
C	X	X	X	X	X	X	X	X	X	X	X	X	X	X	X	X
1		X	X			X	X			X	X		X	X		
2			X	X	X	X				X	X	X	X			
4					X	X	X	X	X	X	X					
8									X	X	X	X	X	X	X	X

10 POSITION, BINARY REAL										
POS	0	1	2	3	4	5	6	7	8	9
C	X	X	X	X	X	X	X	X	X	X
1		X		X		X		X		X
2			X	X			X	X		
4					X	X	X	X		
8									X	X

16 POSITION, HEXADECIMAL REAL																
POS	0	1	2	3	4	5	6	7	8	9	A	B	C	D	E	F
C	X	X	X	X	X	X	X	X	X	X	X	X	X	X	X	X
1		X		X		X		X		X		X		X		X
2			X	X			X	X			X	X			X	X
4					X	X	X	X				X	X	X	X	X
8									X	X	X	X	X	X	X	X

LEGEND
TE SMART PART NUMBER

ACTUATOR ORIENTATION
V=VERTICAL
H=HORIZONTAL

CONFIGURATION/PITCH/COVER COLOR OR BRACKET/MARKING:
0=DIP/2.54/GRAY/LASER, SEE TE DRAWING 2396233
1=DIP/2.54/BLACK/PRINTED, SEE TE DRAWING 2396234
4=SIP/1.27/STAINLESS STEEL/LASER,

ACTUATOR TYPE
D=SCREWDRIVER SLOT, FLUSH

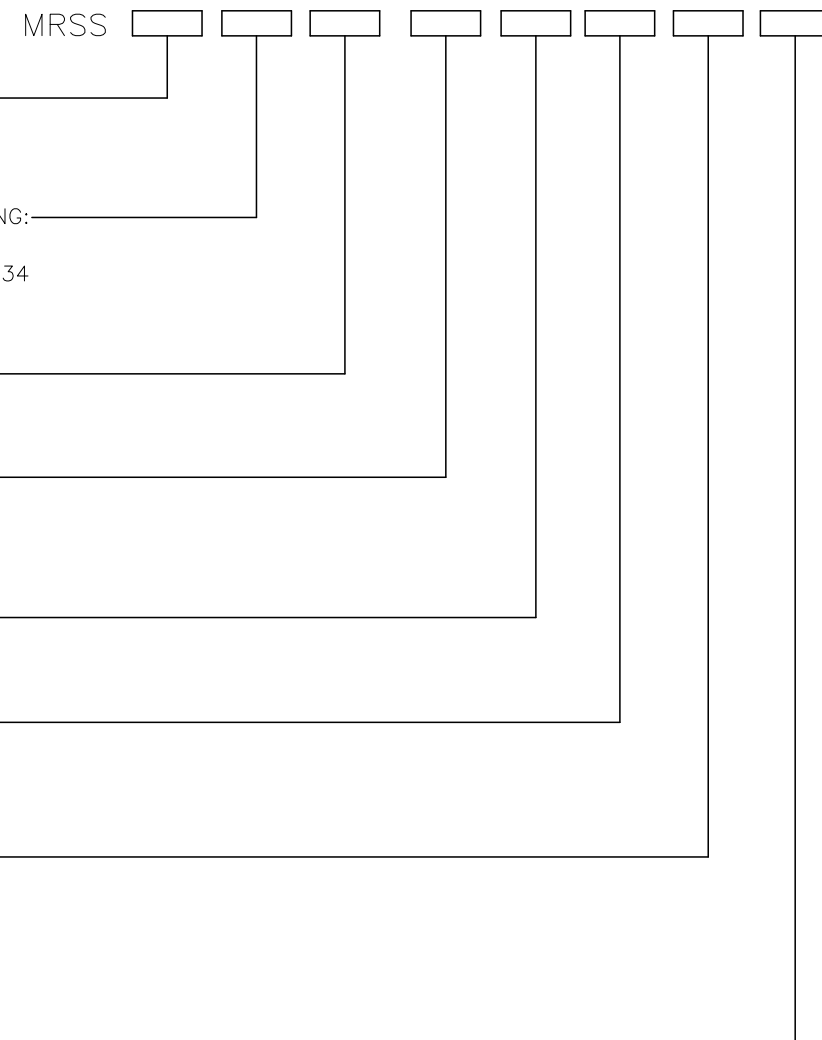
CODE
C=COMPLEMENT
G=GRAY
R=REAL

POSITIONS
10
16

TERMINATION TYPE
SM =SURFACE MOUNT
TH =THROUGH-HOLE

SOLDER TERMINAL CONFIGURATION:
J = J-LEAD
GW=GULLWING
BLANK=THROUGH-HOLE

PACKAGING:
T = TUBE
TR=TAPE AND REEL



ACTUATION	ACTUATOR POSITION	CODE	POSITIONS	SOLDER TERMINAL CONFIGURATION	PACKAGING	TE SMART PART NUMBER	TE PART NUMBER
SCREWDRIVER SLOT, FLUSH	O	HEXADECIMAL REAL	16	THROUGH-HOLE	TUBE	MRSSH4DR16THT	1-2396236-8
				GULLWING	TUBE	MRSSH4DR16SMGWT	1-2396236-7
		BINARY REAL	10	THROUGH-HOLE	TUBE	MRSSH4DR10THT	1-2396236-5
				GULLWING	TUBE	MRSSH4DR10SMGWT	1-2396236-4
		HEXADECIMAL GRAY	16	THROUGH-HOLE	TUBE	MRSSH4DG16THT	1-2396236-2
				GULLWING	TUBE	MRSSH4DG16SMGWT	1-2396236-1
	BINARY GRAY	10	THROUGH-HOLE	TUBE	MRSSH4DG10THT	2396236-9	
			GULLWING	TUBE	MRSSH4DG10SMGWT	2396236-8	
	F	HEXADECIMAL COMPLEMENT	16	THROUGH-HOLE	TUBE	MRSSH4DC16THT	2396236-6
				GULLWING	TUBE	MRSSH4DC16SMGWT	2396236-5
		BINARY COMPLEMENT	10	THROUGH-HOLE	TUBE	MRSSH4DC10THT	2396236-3
				GULLWING	TUBE	MRSSH4DC10SMGWT	2396236-2
HEXADECIMAL REAL		16	THROUGH-HOLE	TUBE	MRSSH4DR16THT	1-2396236-8	
			GULLWING	TUBE	MRSSH4DR16SMGWT	1-2396236-7	
BINARY REAL	10	THROUGH-HOLE	TUBE	MRSSH4DR10THT	1-2396236-5		
		GULLWING	TUBE	MRSSH4DR10SMGWT	1-2396236-4		

THIS DRAWING IS A CONTROLLED DOCUMENT.

DIMENSIONS: mm

TOLERANCES UNLESS OTHERWISE SPECIFIED:

0 PLC	±	=
1 PLC	±	-
2 PLC	±	-
3 PLC	±	-
4 PLC	±	-
ANGLES	±	-

MATERIAL: - FINISH: -

APPROVALS:

DWN	09AUG2021	SATHISH KUMAR_G
CHK	09AUG2021	ALEXANDER, SHARPE
APVD	09AUG2021	ALEXANDER, SHARPE

NAME: MRSS, MINIATURE ROTARY SWITCH SERIES, HORIZONTAL, 1.27, S, STEEL, LASER MARKING

SIZE: A2 CAGE CODE: 00779 DRAWING NO: C=2396236 RESTRICTED TO: -

SCALE: NTS SHEET: 5 of 9 REV: 1

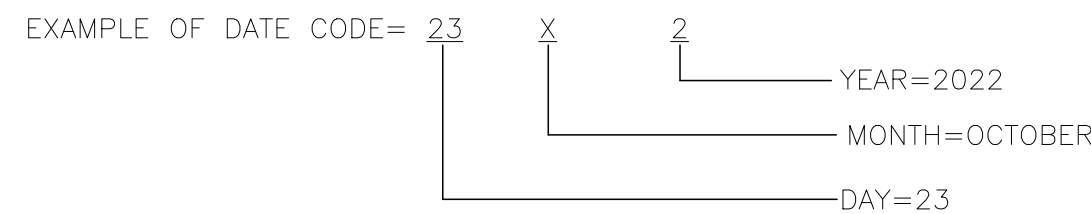
CUSTOMER DRAWING

PRELIMINARY

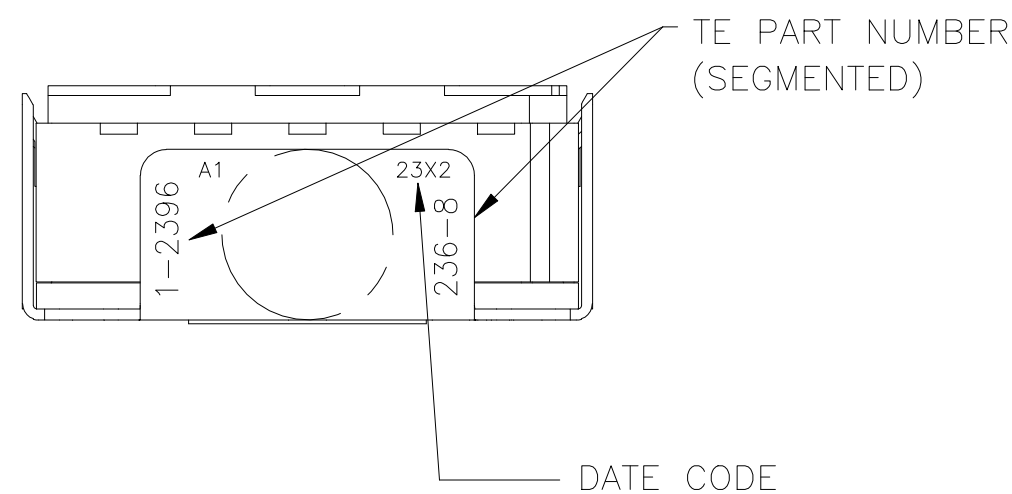
NOTES:

- 1 SEE TABLE, SHEET 5 OF 9 FOR ACTUATOR POSITION WHEN DELIVERED, THE SWITCH SHALL REMAIN IN THIS POSITION DURING MOUNTING/TERMINATION TO AND CLEANING OF THE P.C.BOARD.
- 2. COMPLIANCE: THE CURRENT STATEMENT OF COMPLIANCE IS AVAILABLE AT TE.COM
- 3. IF THE SWITCH IS NOT ACTUATED FOR AN EXTENDED PERIOD OF TIME, SIX MONTHS, IT MAY REQUIRE ACTUATING TO RESTORE SWITCH FUNCTION.
- 4. MSL 1 PER JIS C61760-4:2016 AND IEC 61760-4:2015
- 5. TAPE AND REEL PER EIA 481 TAPE WIDTH 24mm, PITCH 16MM, SEE SHEET 7 OF 9.

6 TE PART NUMBER AND DATE CODE



- MONTH=
- 1 = JANUARY
 - 2 = FEBRUARY
 - 3 = MARCH
 - 4 = APRIL
 - 5 = MAY
 - 6 = JUNE
 - 7 = JULY
 - 8 = AUGUST
 - 9 = SEPTEMBER
 - X = OCTOBER
 - Y = NOVEMBER
 - Z = DECEMBER



SPECIFICATIONS:

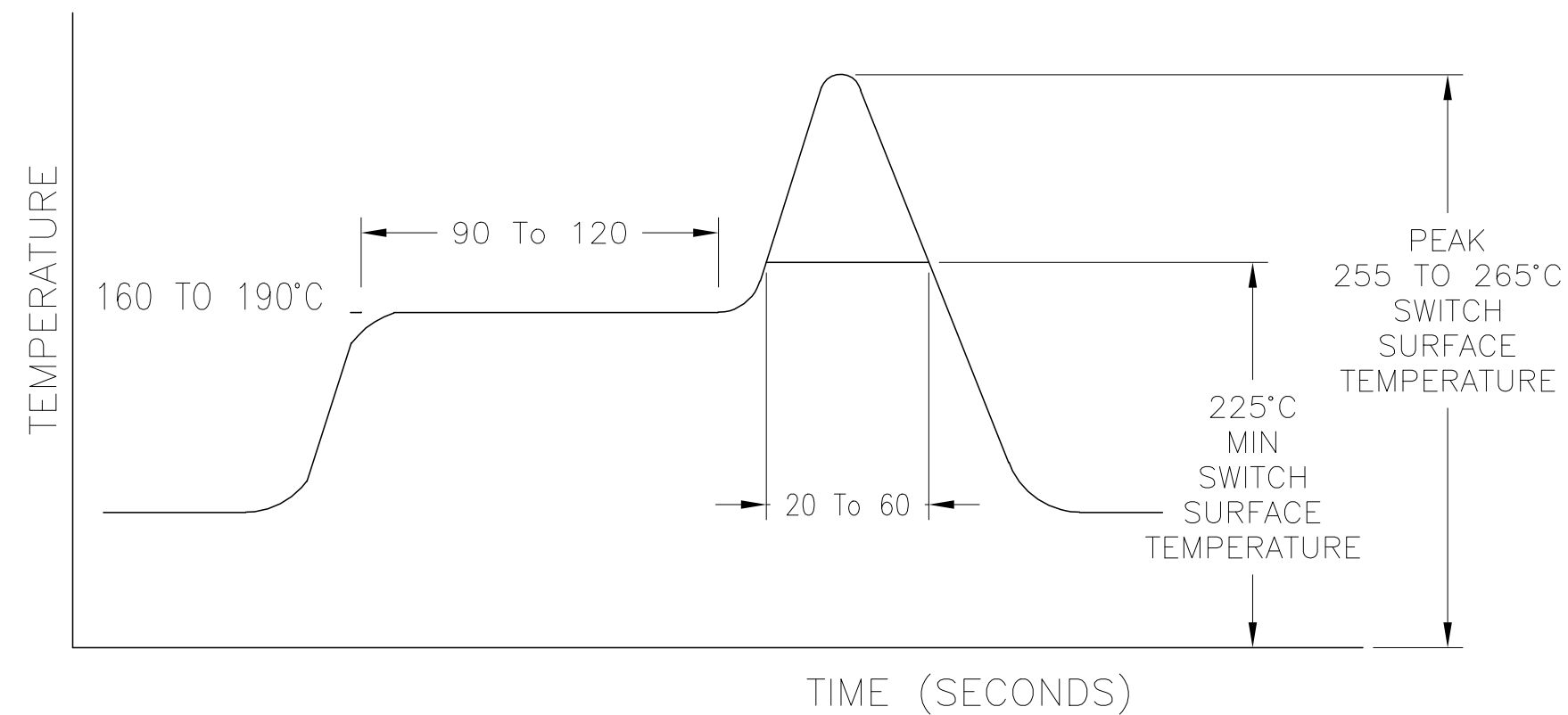
OPERATING CURRENT, 0.4VA @ 20VAC OR DC, MAXIMUM.
 MINIMUM SWITCHING CURRENT, 0.1µA @ 1mV MINIMUM.
 MAXIMUM SWITCHING CURRENT(DURING MAKE OR BREAK), 10mA@5VDC
 NONE SWITCHING CURRENT 100mA@50VDC MAXIMUM
 INITIAL CONTACT RESISTANCE, 100 MILLIOHMS MAX. @ 2V DC 10MILLIAMPS
 CONTACT RESISTANCE AFTER TEST AND PCB TERMINATION, 300 MILLIOHMS MAX.
 INSULATION RESISTANCE, 1,000 MEGOHMS MIN. @ 250 VDC
 DIELECTRIC STRENGTH, 250 VAC , 1 MINUTE
 ELECTRICAL LIFE, 10,000 ACTUATIONS MIN. @ 5V DC 10MILLIAMPS
 MECHANICAL LIFE, 10,000 ACTUATIONS MIN. AT NO LOAD.
 INITIAL ACTUATION TORQUE, 2.0 TO 19.6mN.m
 TEMPERATURE RANGE, -40 TO +85°C

SOLDERING CONDITIONS

MANUAL	TEMPERATURE OF IRON TIP: 320°C MAX. FOR 4±1 SECONDS	PRINTED CIRCUIT BOARD THICKNESS 1.6
WAVE (FOR THROUGH-HOLE)	PREHEAT 100 TO 105°C FOR 30±5 SECONDS	
	SOLDER TEMPERATURE 265°C±3°C FOR 8±2 SECONDS	
REFLOW (FOR GULLWING)	PREHEAT 160 TO 190°C FOR 90 TO 120 SECONDS	
	REFLOW TEMPERATURE 225°C (SWITCH SURFACE) FOR 20 TO 60 SECONDS	
	PEAK TEMPERATURE 255 TO 265°C (SWITCH SURFACE)	
	MAXIMUM NUMBER OF EXPOSURES TO REFLOW PROCESS IS 2	

REVISIONS					
P	LTR	DESCRIPTION	DATE	DWN	APVD
-	-	SEE SHEET 1	-	-	-

REFLOW SOLDER PROFILE FOR GULLWING TERMINALS



1	GOLD OVER NICKEL	STAINLESS STEEL	BRACKET	8
1	N/A	STAINLESS STEEL	PLATE	7
1	GOLD OVER NICKEL	COPPER ALLOY	CONTACT	6
1	N/A	FPM (FLUOROCARBON)	O-RING	5
1	WHITE	LCP	ACTUATOR	4
1	GRAY	POLYPHENYLENE SULFIDE	COVER	3
5	GOLD OVER NICKEL	BRASS	TERMINAL	2
1	BLACK	POLYPHENYLENE SULFIDE	CASE	1
QTY	FINISH/COLOR	MATERIAL	COMPONENT	ITEM

THIS DRAWING IS A CONTROLLED DOCUMENT.

DWN: 09AUG2021 SATHISH KUMAR G
 CHK: 09AUG2021 ALEXANDER, SHARPE
 APVD: 09AUG2021 ALEXANDER, SHARPE

TE Connectivity

NAME: MRSS, MINIATURE ROTARY SWITCH SERIES,HORIZONTAL,1.27, S,STEEL, LASER MARKING

SIZE: A2 CAGE CODE: 00779 DRAWING NO: 2396236 RESTRICTED TO: -

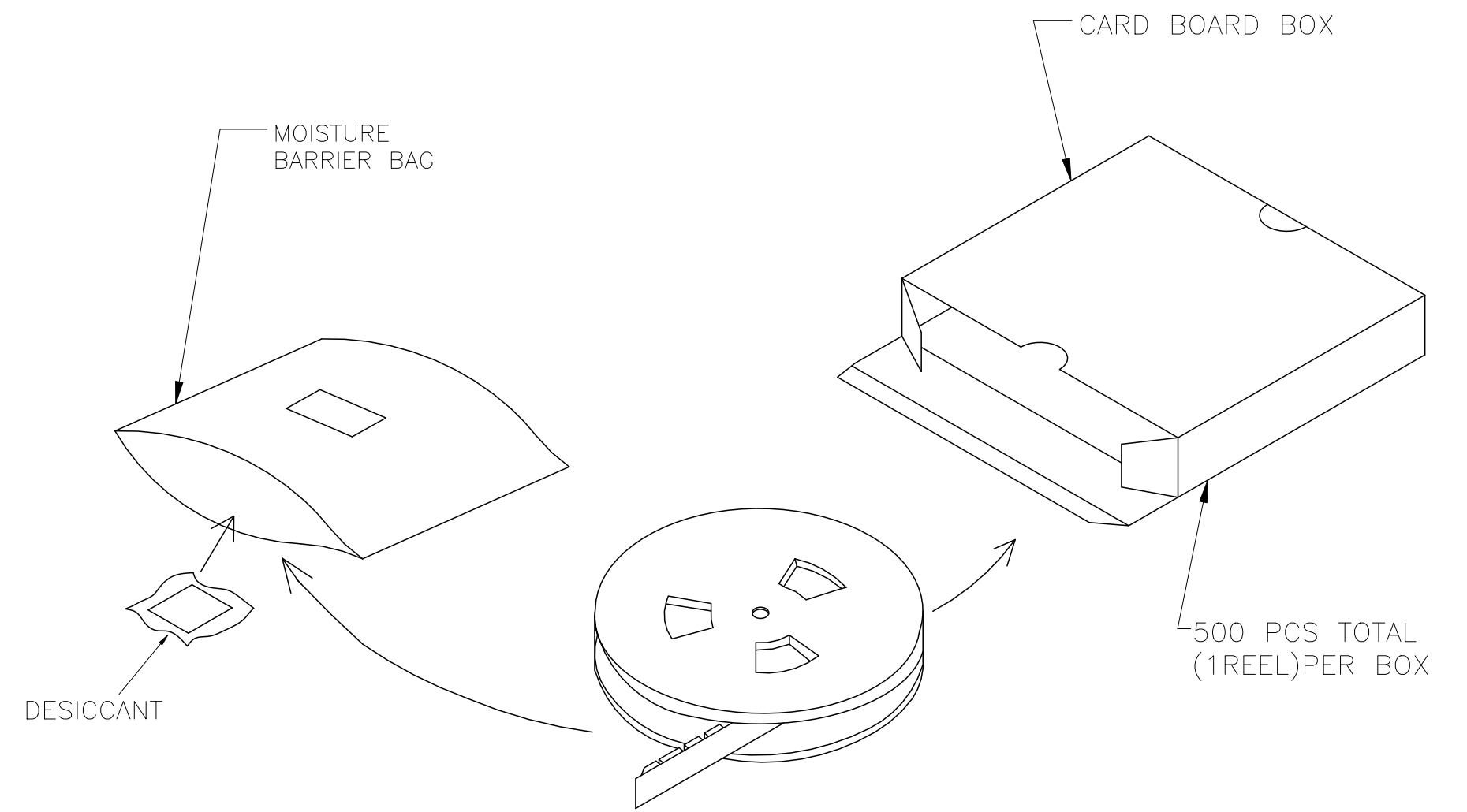
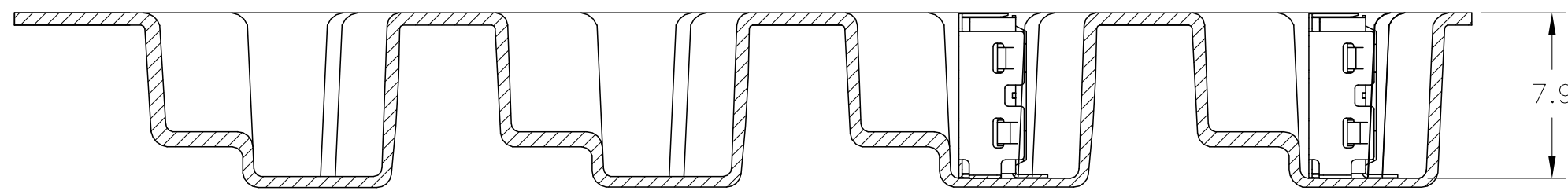
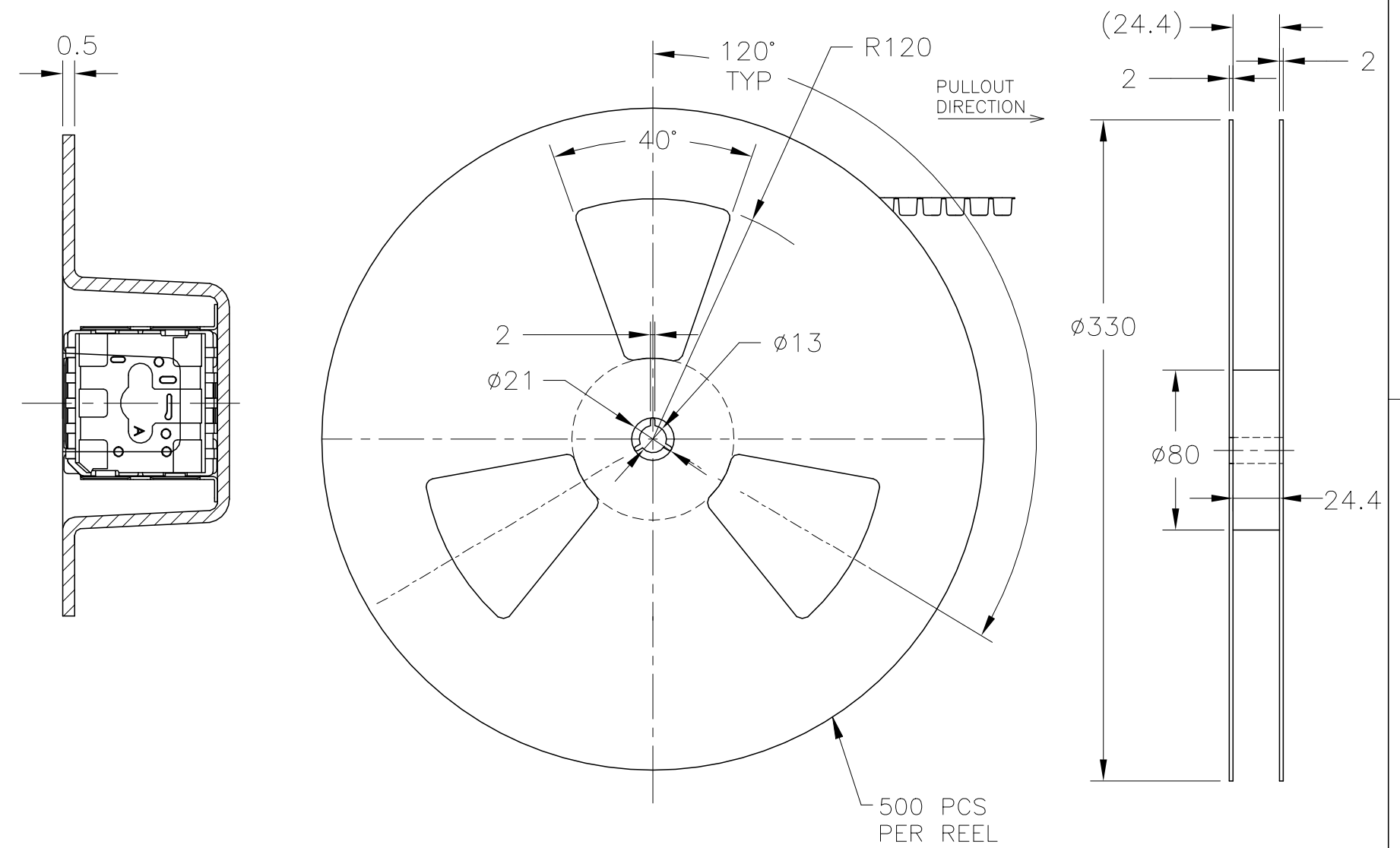
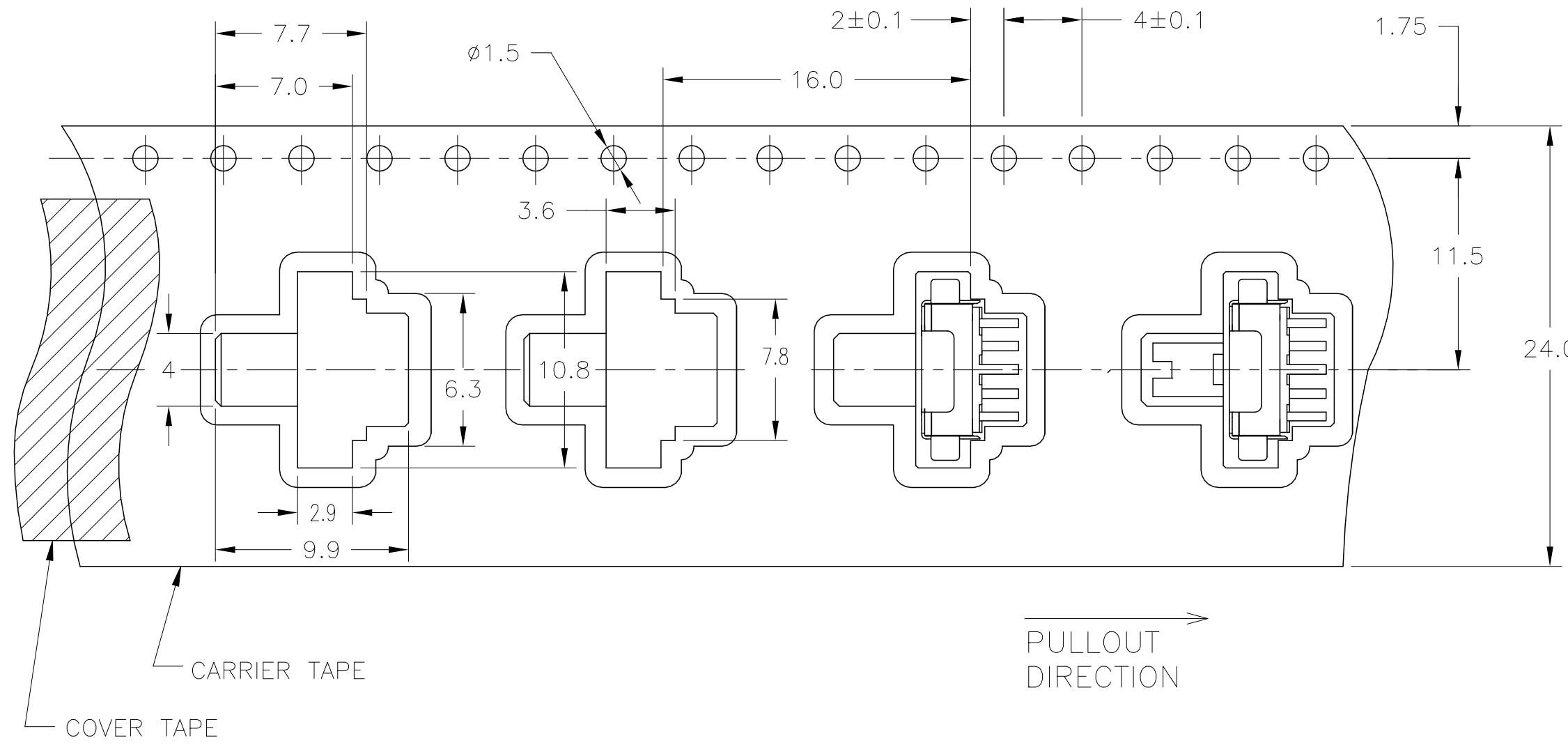
SCALE: NTS SHEET: 6 of 9 REV: 1

CUSTOMER DRAWING

PRELIMINARY

PACKAGING SPECIFICATIONS TAPE AND REEL FOR SMT, GULLWING TERMINALS

REVISIONS					
P	LTR	DESCRIPTION	DATE	DWN	APVD
-	-	SEE SHEET 1	-	-	-



PRELIMINARY

THIS DRAWING IS A CONTROLLED DOCUMENT.		DWN SATHISH KUMAR G 09AUG2021	TE TE Connectivity	
DIMENSIONS: mm		CHK ALEXANDER, SHARPE 09AUG2021		
TOLERANCES UNLESS OTHERWISE SPECIFIED:		APVD ALEXANDER, SHARPE 09AUG2021	NAME MRSS, MINIATURE ROTARY SWITCH SERIES, HORIZONTAL, 1.27, S, STEEL, LASER MARKING	
0 PLC ± =		PRODUCT SPEC	SIZE CAGE CODE DRAWING NO RESTRICTED TO	
1 PLC ± =		APPLICATION SPEC	A2 00779 C=2396236	
2 PLC ± =		WEIGHT	SCALE NTS SHEET 7 of 9 REV 1	
3 PLC ± =		MATERIAL		
4 PLC ± =		FINISH		
ANGLES ± =		CUSTOMER DRAWING		

4

3

2

1

© 2022 TE Connectivity. All Rights Reserved.

PACKAGING SPECIFICATIONS
TUBE FOR SMT GULLWING TERMINALS

TUBE FOR THROUGH-HOLE TERMINALS

TE PART NUMBER
SEE TABLE, SHEET 5

	NUMBER OF SWITCHES PER		
	TUBE	INNER BOX	CARTON
GULLWING TERMINALS	45	2,700	13,500
THROUGH-HOLE TERMINALS	60	3,600	18,000

REVISIONS					
P	LTR	DESCRIPTION	DATE	DWN	APVD
-	-	SEE SHEET 1	-	-	-

THIS DRAWING IS A CONTROLLED DOCUMENT.		DWN 09AUG2021 SATHISH KUMAR_G	TE Connectivity		
DIMENSIONS: mm		CHK 09AUG2021 ALEXANDER, SHARPE			
TOLERANCES UNLESS OTHERWISE SPECIFIED:		APVD 09AUG2021 ALEXANDER, SHARPE	NAME MRSS, MINIATURE ROTARY SWITCH SERIES,HORIZONTAL,1.27, S,STEEL, LASER MARKING		
0 PLC ± =		PRODUCT SPEC	APPLICATION SPEC		
1 PLC ± =		APPLICATION SPEC	SIZE CAGE CODE DRAWING NO		
2 PLC ± =		WEIGHT	A2 00779 C=2396236		
3 PLC ± =		CUSTOMER DRAWING	RESTRICTED TO		
4 PLC ± =		SCALE	SHEET 8 of 9		
ANGLES ± =		SCALE NTS	REV 1		
FINISH					

PRELIMINARY

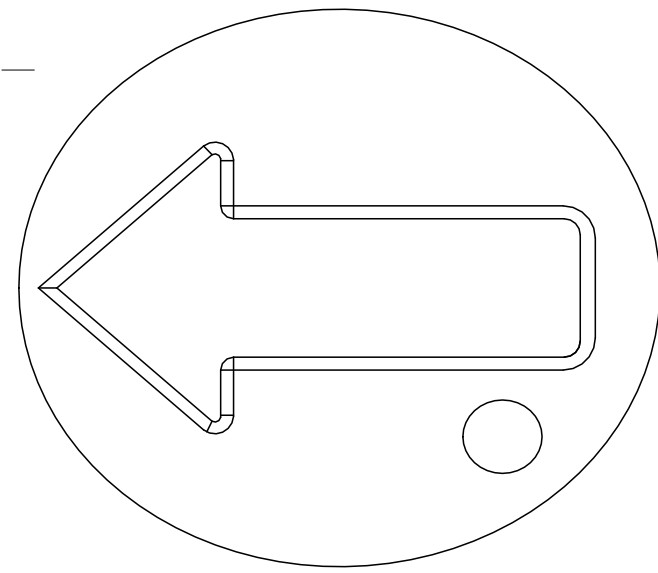
1471-9 (1/15)

2396236

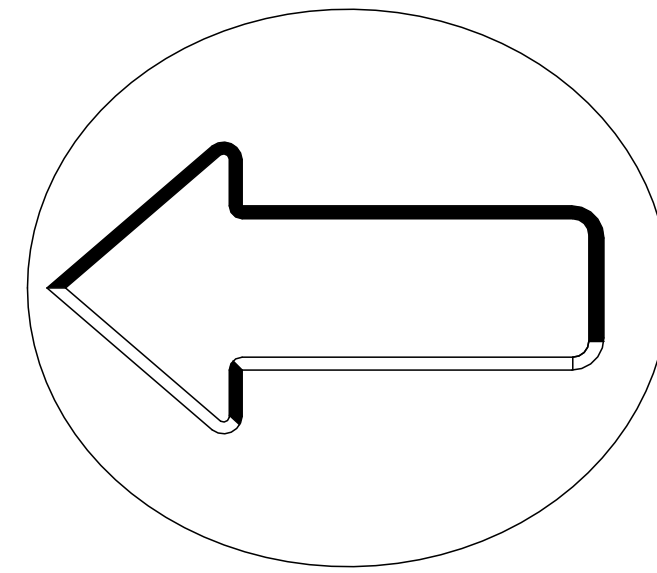
REVISIONS					
P	LTR	DESCRIPTION	DATE	DWN	APVD
-	-	SEE SHEET 1	-	-	-

CODE IDENTIFIER ON ACTUATOR

COMPLIMENT CODE-

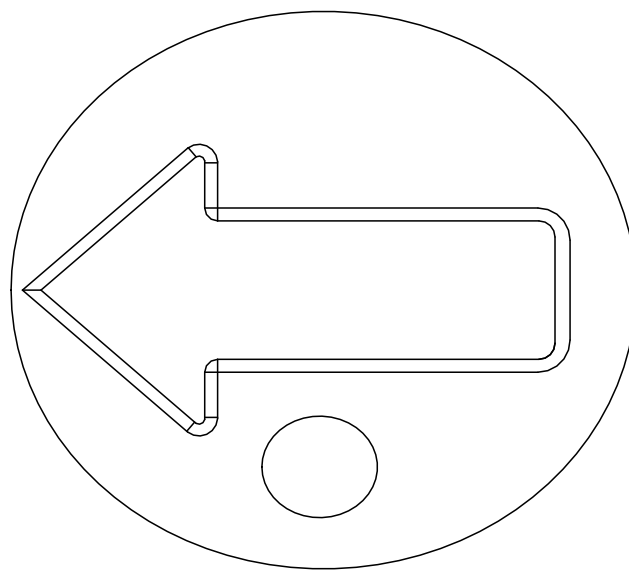


10 POSITION

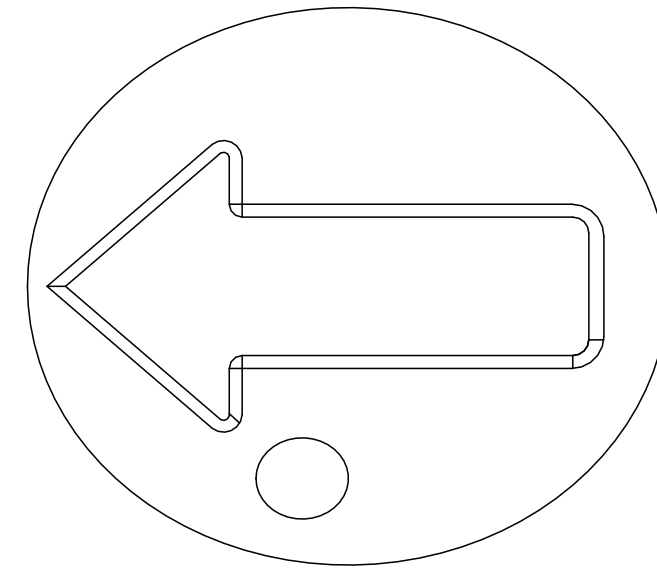


16 POSITION (NO IDENTIFIER)

GRAY CODE-

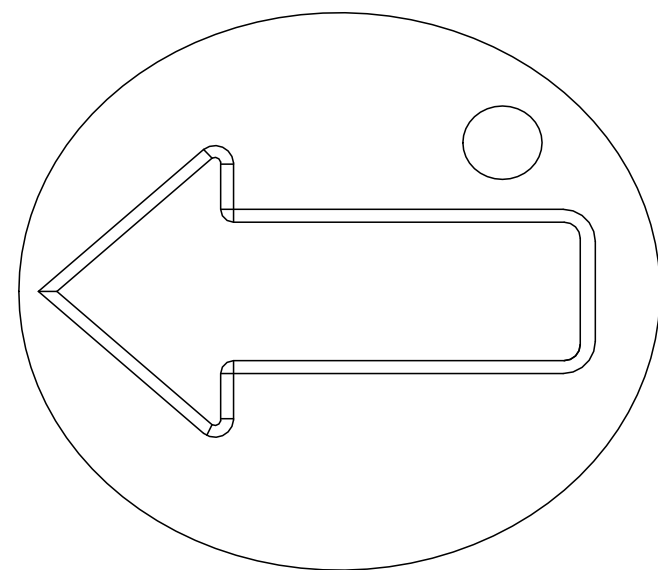


10 POSITION

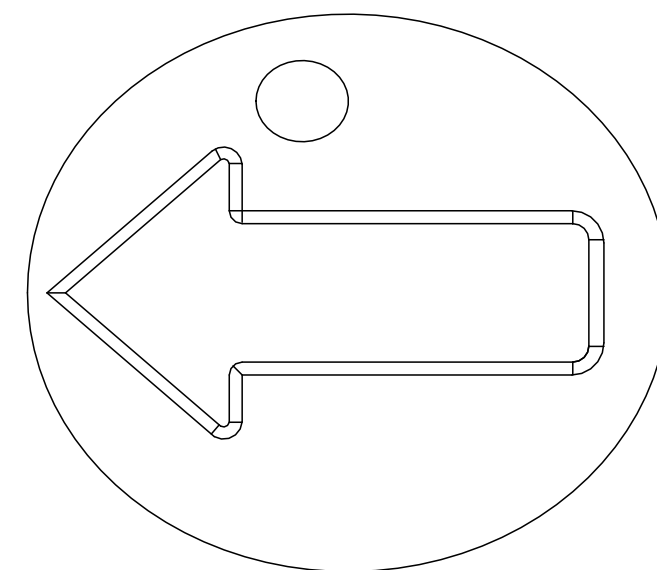


16 POSITION

REAL CODE-



10 POSITION



16 POSITION

PRELIMINARY

THIS DRAWING IS A CONTROLLED DOCUMENT.		DWN 09AUG2021 SATHISH KUMAR G	TE Connectivity	
DIMENSIONS: mm		CHK 09AUG2021 ALEXANDER, SHARPE		
TOLERANCES UNLESS OTHERWISE SPECIFIED:		APVD 09AUG2021 ALEXANDER, SHARPE	NAME MRSS, MINIATURE ROTARY SWITCH SERIES,HORIZONTAL,1.27, S,STEEL, LASER MARKING	
0 PLC ± =		PRODUCT SPEC	APPLICATION SPEC	
1 PLC ± =		APPLICATION SPEC	RESTRICTED TO	
2 PLC ± =		WEIGHT	SIZE A2	CAGE CODE 00779
3 PLC ± =		FINISH	DRAWING NO C=2396236	SCALE NTS
4 PLC ± =		MATERIAL	SHEET 9 of 9	REV 1
ANGLES ± =		CUSTOMER DRAWING		