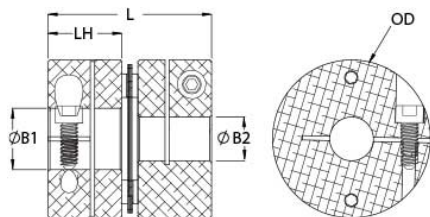




MDCS41-17-15-A

Ruland MDCS41-17-15-A, 17mm x 15mm Single Disc Coupling, Aluminum, Clamp Style, 41.3mm OD, 39.7mm Length



Description

Ruland MDCS41-17-15-A is a clamp single disc coupling with 17mm x 15mm bores, 41.3mm OD, and 39.7mm length. It is zero-backlash and has a balanced design for reduced vibration at high speeds. The single disc design is comprised of two anodized aluminum hubs and two sets of thin stainless steel springs which can accommodate angular misalignment and axial motion, however does not allow for any parallel misalignment. MDCS41-17-15-A is lightweight and has low inertia making it well suited for applications with speeds up to 10,000 RPM. Hardware is metric and tests beyond DIN 912 12.9 standards for maximum torque capabilities. Ruland manufactures MDCS41-17-15-A to be torsionally rigid and an excellent fit for precise positioning stepper servo applications commonly found in semiconductor, solar, printing, machine tool, and test and measurement systems. It is machined from solid bar stock that is sourced exclusively from North American mills and RoHS3 and REACH compliant. MDCS41-17-15-A is manufactured in our Marlborough, MA factory under strict controls using proprietary processes.

Product Specifications

Bore (B1)	17 mm	Small Bore (B2)	15 mm
B1 Max Shaft Penetration	19.2 mm	B2 Max Shaft Penetration	19.2 mm
Outer Diameter (OD)	41.3 mm	Bore Tolerance	+0.03 mm / -0.00 mm
Length (L)	39.7 mm	Hub Width (LH)	18.0 mm
Recommended Shaft Tolerance	+0.000 mm / -0.013 mm	Forged Clamp Screw	M4
Screw Material	Alloy Steel	Hex Wrench Size	3.0 mm
Screw Finish	Black Oxide	Seating Torque	4.6 Nm
Number of Screws	2 ea	Dynamic Torque Reversing	5.08 Nm
Angular Misalignment	1.0°	Dynamic Torque Non-Reversing	10.15 Nm
Parallel Misalignment	0.00 mm	Static Torque	20.3 Nm
Axial Motion	0.25 mm	Torsional Stiffness	70.6 Nm/Deg
Moment of Inertia	$2.790 \times 10^{-5} \text{ kg-m}^2$	Maximum Speed	10,000 RPM
Full Bearing Support Required?	Yes	Zero-Backlash?	Yes
Balanced Design	Yes	Torque Wrench	TW:BT-1R-1/4-41.0
Recommended Hex Key	Metric Hex Keys	Material Specification	Hubs: 2024-T351 Aluminum Bar, Disc Springs: Type 302 Stainless Steel

Temperature	-40°F to 200°F (-40°C to 93°C)	Finish Specification	Sulfuric Anodized MIL-A-8625 Type II, Class 2 and ASTM B580 Type B Black Anodize
--------------------	--------------------------------	-----------------------------	--

Manufacturer	Ruland Manufacturing	Country of Origin	USA
Weight (lbs)	0.251300	UPC	634529124567
Tariff Code	8483.60.8000	UNSPC	31163008

Note 1 Stainless steel hubs are available upon request.

Note 2 Torque ratings are at maximum misalignment.

Note 3 Performance ratings are for guidance only. The user must determine suitability for a particular application.

Note 4 Torque ratings for the couplings are based on the physical limitations/failure point of the disc springs. Under normal/typical conditions the hubs are capable of holding up to the rated torque of the disc springs. In some cases, especially when the smallest standard bores are used or where shafts are undersized, slippage on the shaft is possible below the rated torque of the disc springs. Keyways are available to provide additional torque capacity in the shaft/hub connection when required. Please consult technical support for more assistance.

Installation Instructions

1. Align the bores of the MDCS41-17-15-A single disc coupling on the shafts that are to be joined and determine if the misalignment parameters are within the limits of the coupling. (*Angular Misalignment: 1.0°, Parallel Misalignment: 0.00 mm, Axial Motion: 0.25 mm*)
 2. Fully tighten the M4 screw on the first hub to the recommended seating torque of 4.6 Nm using a 3.0 mm hex torque wrench.
 3. Before tightening the screw on the second hub, rotate the coupling by hand to allow it to reach its free length.
 4. Tighten the screw on the second hub to the recommended seating torque. Make sure the coupling remains axially relaxed and the misalignment angle remains centered along the length of the coupling.
 5. The shafts may extend into the relieved portion of the bore as long as it does not exceed the shaft penetration length of 19.2 mm.
-