

ITEM	PART#	DESCRIPTION	QTY	UOM
A	522660411	2.5 WATER PROOF CONN PLUG HOUSING ASSY	1	PC
C	501478000	2.5 W.P. CONN CRIMP PIN	4	PC
D	884260070	PAPER PRINTED PAPER WHITE (S100X150YAJ)	1	PC

FROM	TO	DESCRIPTION	COLOR
A1	--	1CX0.5 SQMM DISC PVC BK 1.6MM FLRY-B	BLACK
A2	--	1CX0.5 SQMM DISC PVC BK 1.6MM FLRY-B	BLACK
A3	--	1CX0.5 SQMM DISC PVC BK 1.6MM FLRY-B	BLACK
A4	--	1CX0.5 SQMM DISC PVC BK 1.6MM FLRY-B	BLACK

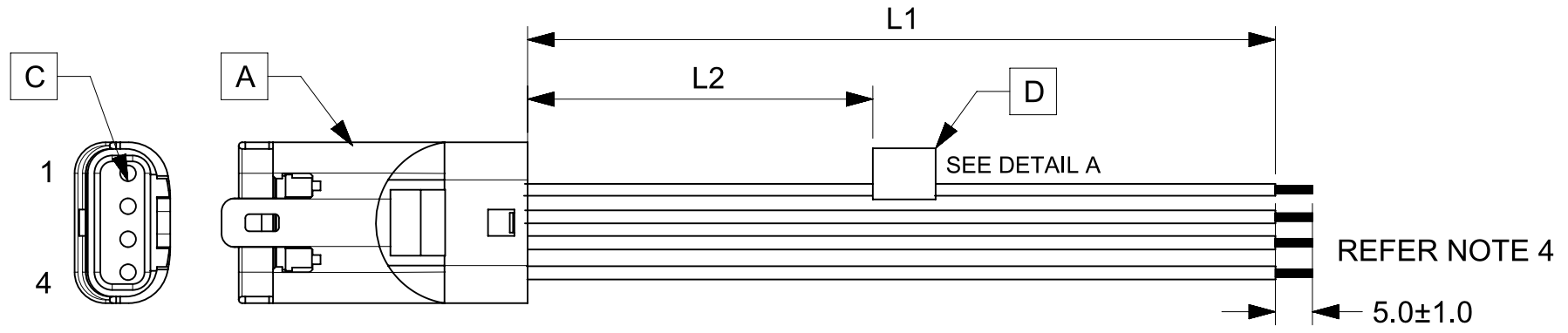


TABLE			
PART NUMBER	L1	L2	TITLE
2153131041	150±8	63 REF	MizuP25 P-S 4ckt 150mm Sn
2153131042	300±10	138 REF	MizuP25 P-S 4ckt 300mm Sn
2153131043	600±10	288 REF	MizuP25 P-S 4ckt 600mm Sn

NOTES

1. Connector view shown is from mating side.
2. Harness must pass 100% electrical continuity and polarity.
3. Connectors must pass the sealing specifications as defined by manufacturer.
4. The free ends to be stripped twisted and tinned to the length of 5±1. the tinning dia must be 1.25mm max.
5. Label text must be 2mm max. in height with Arial font.
6. Label must be wrapped in flag type on a single cable.

MOLEX P/N
MOLEX
BATCH WK/YR

DETAIL A

FUNCTIONAL SYMBOLS $\frac{F}{A} = 0$ $\frac{F}{E} = 0$ $\frac{F}{P} = 0$	THIS DRAWING CONTAINS INFORMATION THAT IS PROPRIETARY TO MOLEX ELECTRONIC TECHNOLOGIES, LLC AND SHOULD NOT BE USED WITHOUT WRITTEN PERMISSION		CURRENT REV DESC:		
	DIMENSION UNITS	SCALE	GENERAL TOLERANCES (UNLESS SPECIFIED)		
	mm	NTS	ANGULAR TOL ± °		
	4 PLACES ±		3 PLACES ±		
DIVISIONAL SYMBOLS	EC NO: 641784		2020/07/19		PRODUCT CUSTOMER DRAWING DOCUMENT NUMBER: 2153131041 DOC TYPE: PSD DOC PART: 000 REVISION: A
	DRWN: NNANKOLA		2020/07/20		
	CHK'D: SD		2020/07/20		
	APPR: SD		2020/07/20		
INITIAL REVISION:		MATERIAL NUMBER		CUSTOMER	SHEET NUMBER
DRWN: NNANKOLA		215313		GENERAL MARKET	1 OF 1
APPR: SD		SERIES			
DRAFT WHERE APPLICABLE MUST REMAIN WITHIN DIMENSIONS		THIRD ANGLE PROJECTION	DRAWING	A4-SIZE	