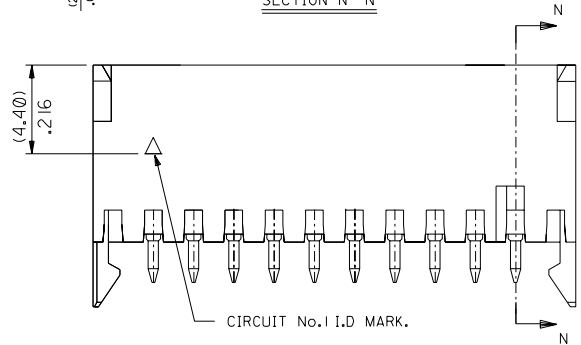
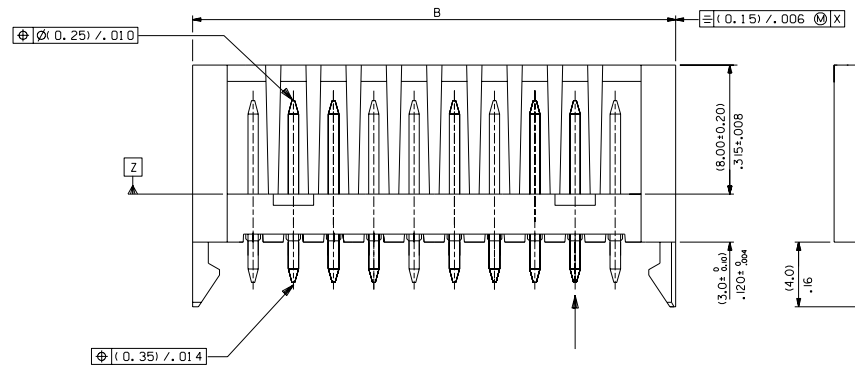
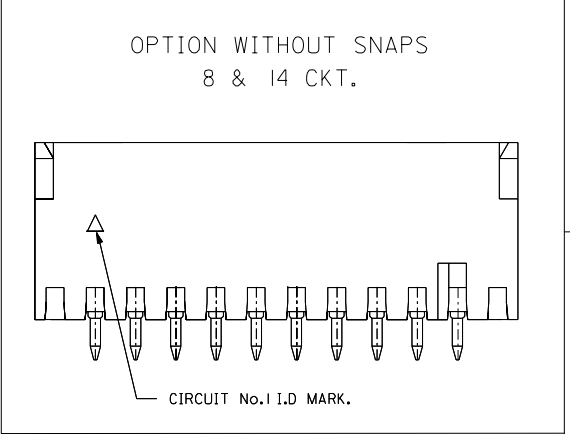
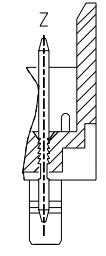
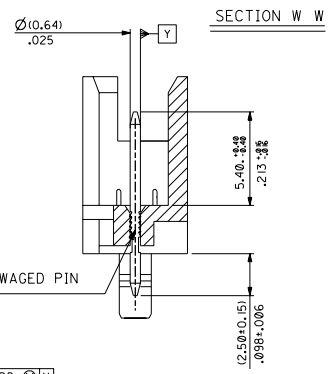
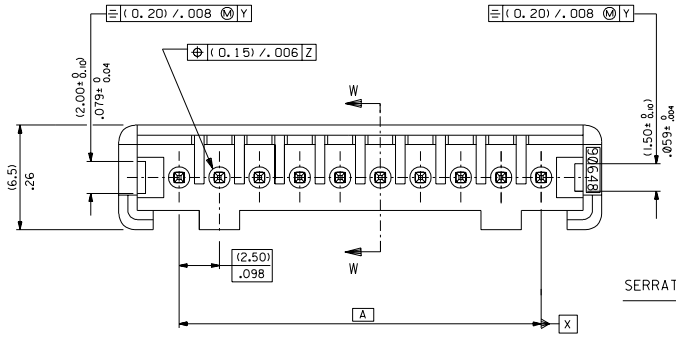
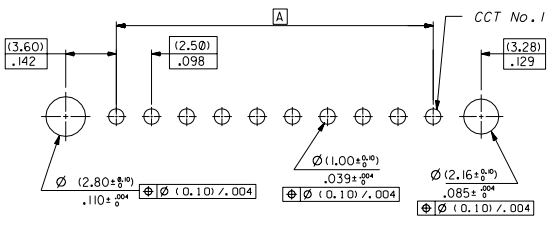


PART NO. SEE CHART
 DWG. NO. SDA-90648



RECOMMENDED P.C.B. HOLE LAYOUT

PCB LAYOUT : COMPONENT SIDE
 PCB THICKNESS 1.50 TO 1.60.

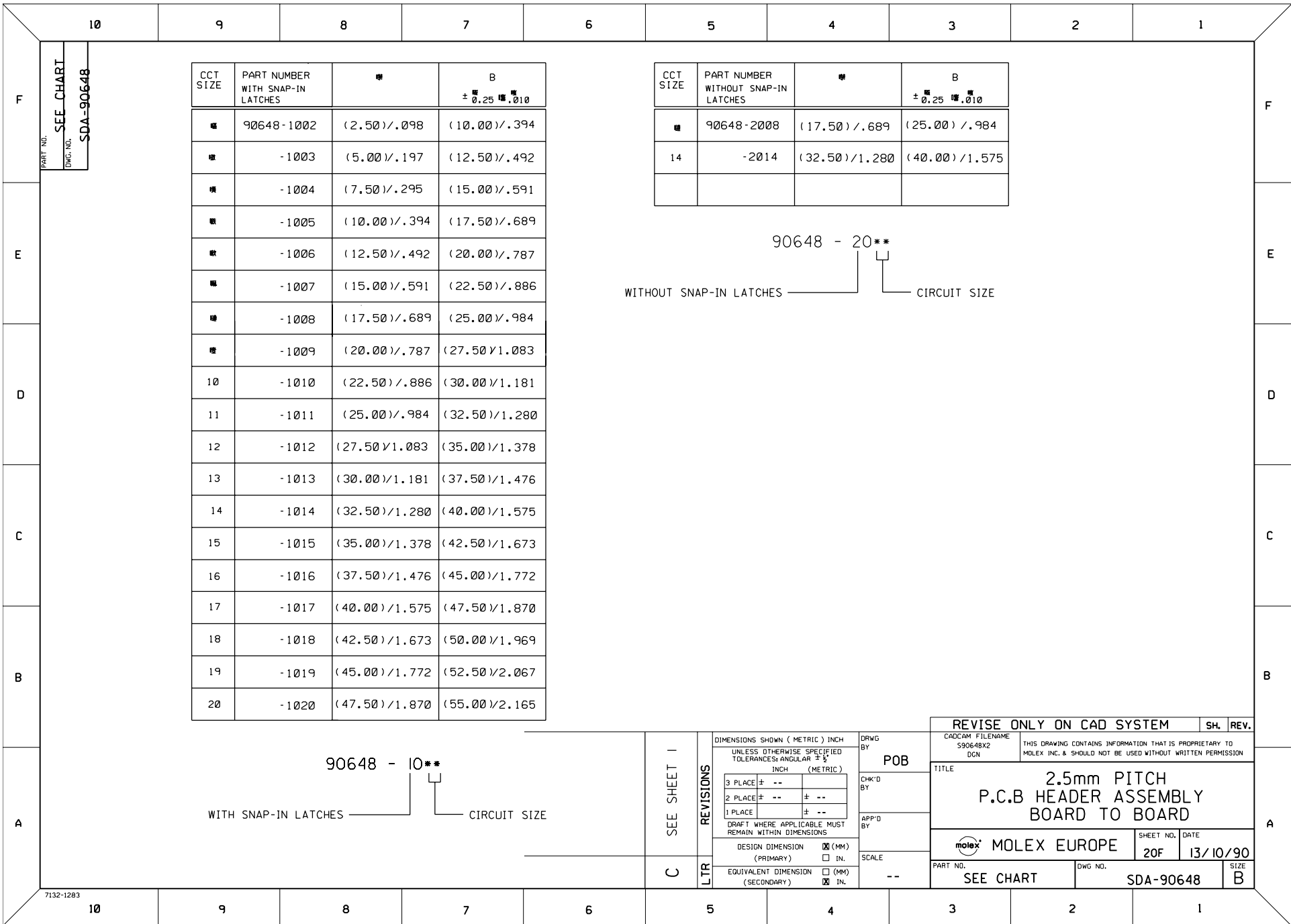


NOTES :

- MATERIAL
 HEADER (2-6 CIRCUIT) : POLYESTER, UL 94V-0, G.E VALOX 310-SE0.
 HEADER (7-20 CIRCUIT) : 15% GF NATURAL (WHITE) POLYESTER, RATED UL 94V-0
 PINS: BRASS, PLATING: (3um)/.118uin MIN. TIN
 TO 95/5 OVER (2um)/.078uin MIN. COPPER OR NICKEL.
- FOR ALL UNSTATED DIMENSIONS SEE SHEET 2.
- PIN PUSH OUT FORCE 35N MIN. IN DIRECTION OF ARROW Z.
- OPTIONS ADDED: 8 & 14ckt. WITHOUT SNAPS.

2	C
1	E

MODIFIED DIMS EC NO. E2004-1138 DRWN: DBYRNES 18/05/04 CHK: BMAGUIRE 06/04/10 APPR: BMAGUIRE 06/04/10	QUALITY SYMBOLS MAJOR = CRITICAL =	GENERAL TOLERANCES: (UNLESS SPECIFIED)		SCALE 5:1	DESIGN UNITS <input type="checkbox"/> mm <input type="checkbox"/> INCH	THIRD ANGLE PROJECTION 	DIMENSIONS: <input checked="" type="checkbox"/> mm <input type="checkbox"/> INCH <input type="checkbox"/> mm <input type="checkbox"/> ONLY	SHT 2	REV C
		4 PLACES ±0. ±. 3 PLACES ±0. ±.006 2 PLACES ±0. 0.15 ±.008 1 PLACE ±0. 0.25 ±. ANGULAR: ± 2°	DRAWN BY & DATE POB 13/10/90	CHECKED BY & DATE BMAGUIRE 13/10/90	APPROVED BY & DATE BMAGUIRE 13/10/90	TITLE: 2.5mm PITCH P.C.B. HEADER ASSEMBLY BOARD TO BOARD	MOLEX INCORPORATED	MATERIAL NO. SEE CHART	DRAWING NO. SDA-90648
DRAFT WHERE APPLICABLE MUST REMAIN WITHIN DIMENSIONS	THIS DRAWING CONTAINS INFORMATION THAT IS PROPRIETARY TO MOLEX INCORPORATED AND SHOULD NOT BE USED WITHOUT WRITTEN PERMISSION.							SIZE B	



PART NO. SEE CHART
 DWG. NO. SDA-90648

CCT SIZE	PART NUMBER WITH SNAP-IN LATCHES	A	B ± 0.25 0.010
10	90648-1002	(2.50)/.098	(10.00)/.394
11	-1003	(5.00)/.197	(12.50)/.492
12	-1004	(7.50)/.295	(15.00)/.591
13	-1005	(10.00)/.394	(17.50)/.689
14	-1006	(12.50)/.492	(20.00)/.787
15	-1007	(15.00)/.591	(22.50)/.886
16	-1008	(17.50)/.689	(25.00)/.984
17	-1009	(20.00)/.787	(27.50)/1.083
18	-1010	(22.50)/.886	(30.00)/1.181
19	-1011	(25.00)/.984	(32.50)/1.280
20	-1012	(27.50)/1.083	(35.00)/1.378
21	-1013	(30.00)/1.181	(37.50)/1.476
22	-1014	(32.50)/1.280	(40.00)/1.575
23	-1015	(35.00)/1.378	(42.50)/1.673
24	-1016	(37.50)/1.476	(45.00)/1.772
25	-1017	(40.00)/1.575	(47.50)/1.870
26	-1018	(42.50)/1.673	(50.00)/1.969
27	-1019	(45.00)/1.772	(52.50)/2.067
28	-1020	(47.50)/1.870	(55.00)/2.165

CCT SIZE	PART NUMBER WITHOUT SNAP-IN LATCHES	A	B ± 0.25 0.010
14	90648-2008	(17.50)/.689	(25.00)/.984
14	-2014	(32.50)/1.280	(40.00)/1.575

90648 - 20**

WITHOUT SNAP-IN LATCHES ——— CIRCUIT SIZE

90648 - 10**

WITH SNAP-IN LATCHES ——— CIRCUIT SIZE

SEE SHEET 1	REVISIONS	DIMENSIONS SHOWN (METRIC) INCH UNLESS OTHERWISE SPECIFIED TOLERANCES: ANGULAR ± 1/2		DRWG BY POB	REVISE ONLY ON CAD SYSTEM		SH.	REV.	
		INCH (METRIC)		CHK'D BY	TITLE 2.5mm PITCH P.C.B HEADER ASSEMBLY BOARD TO BOARD				
		3 PLACE ± --	± --	APP'D BY	SHEET NO. DATE 20F 13/10/90		MOLEX EUROPE		
		2 PLACE ± --	± --	SCALE	PART NO. DWG NO. SIZE SEE CHART SDA-90648 B		THIS DRAWING CONTAINS INFORMATION THAT IS PROPRIETARY TO MOLEX INC. & SHOULD NOT BE USED WITHOUT WRITTEN PERMISSION		
1 PLACE ± --	± --	SCALE	--		Molex logo				
DRAFT WHERE APPLICABLE MUST REMAIN WITHIN DIMENSIONS		DESIGN DIMENSION (PRIMARY) <input checked="" type="checkbox"/> (MM) <input type="checkbox"/> IN.		EQUIVALENT DIMENSION (SECONDARY) <input type="checkbox"/> (MM) <input checked="" type="checkbox"/> IN.					