

COOL POWER TECHNOLOGIES

15W Isolated Dual Output DC/DC Converter

Features

- Ultra-wide input voltage range: 9 – 36Vin
- Output: ± 12 V at ± 0.625 A, 15W max.
- Tiny 0.94" X 0.94" x 0.35" max ht (Thru-hole)
- 0.94" X 0.94" x 0.396" Surface Mount
- 1" x 1" x 0.41" Encapsulated Product
- RoHS 3 Directive 2015/863/EU
- No minimum load/capacitance required
- On-board input differential "PI" LC-filter
- Withstands 50 V input transients
- Fixed-frequency operation
- Full protection (OTP, OCP, OVP, UVLO w/auto-restart)
- Remote ON/OFF - positive or negative enable logic options
- Weight: 0.266 oz [7.54 g] (open frame), 0.67 oz [19g] (encapsulated)
- Basic Insulation w/2250VDC I/O isolation (open frame), 1600VDC (encapsulated)
- Meets UL94, V-0 flammability rating
- Complies with UL/CSA60950-1, TUV per IEC/EN60950-1, 2nd edition
- Compliant to REACH (EC) No 1907/2006, 205 SVHC update
- Designed to meet Class B conducted emissions per FCC and EN55032 when used with external filter (see EMC Compliance section below.)



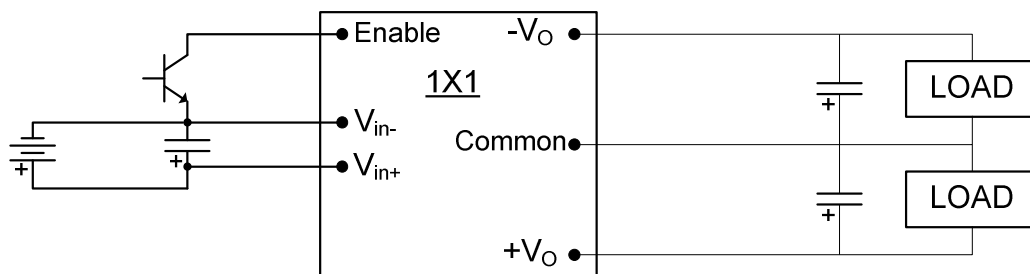
Description

The "Cool Power Technologies" CP15_2212518 dual output DC-DC converter is an isolated 1" X 1" DC-DC module that conforms to the industry standard function and pinout. The converter operates over an input voltage range of 9 to 36 VDC, and provides a tightly regulated output voltage with an output current rating of ± 0.625 A. The output is fully isolated from the input and the converter meets Basic Insulation requirements with 2250VDC I/O isolation rating open frame, 1600VDC for the encapsulated version. The standard feature set includes remote On/Off (positive or negative enable), input undervoltage lockout, output overvoltage protection, overcurrent and short circuit protections and overtemperature shutdown with hysteresis. The high efficiency of the CP15_2212518 allows operation over a wide ambient temperature range with minimal derating (see Characteristic Curves section.)

TABLE OF CONTENTS

| SECTION | PAGE |
|------------------------------------|------|
| FEATURES & DESCRIPTION | 1 |
| APPLICATION DIAGRAM | 2 |
| ELECTRICAL SPECIFICATIONS | 3 |
| CHARACTERISTIC PERFORMANCE CURVES | 6 |
| CHARACTERISTIC WAVEFORMS | 7 |
| APPLICATION NOTES | 8 |
| • RIPPLE MEASUREMENTS TEST SET-UP | 8 |
| • THERMAL DERATING | 9 |
| • EMC COMPLIANCE | 11 |
| MECHANICAL OUTLINE & PCB FOOTPRINT | 12 |
| ORDERING INFORMATION | 14 |

APPLICATION DIAGRAM



ELECTRICAL SPECIFICATIONS

9–36Vin, ±12V/±0.625Aout

Conditions: T_A = 25 °C, Airflow = 300 LFM, Vin = 24 VDC, Cin = 100 µF, unless otherwise specified.

| Input Characteristics | | | | | |
|--|---|------------|---------------------|---------------------------------|------------------------|
| Parameter | Conditions | Min | Typ | Max | Unit |
| Operating Input Voltage Range | | 9 | 24 | 36 | VDC |
| Input Under-Voltage Lock-out Turn-on Threshold Turn-off Threshold | | 8.5 7.7 | 8.7 7.9 | 8.9 8.2 | VDC |
| Input Voltage Transient | 100ms | | | 50 | VDC |
| Maximum Input Current | V _{IN} =9VDC; I _{OUT} =±0.625A | | | 2 | A |
| Input Standby Current | Converter Disabled | | 2 | 5 | mA |
| Input No-Load Current | Converter Enabled | | 23 | | mA |
| Short Circuit Input Current | RMS | | 30 | | mA |
| Input Reflected Ripple Current | 5Hz to 50MHz See Fig 15 for setup | | 5 | 10 | mA _{PK-PK} |
| Input Voltage Ripple Rejection | 120Hz | | 50 | | dB |
| Inrush Current | All | - | | 0.1 | A ² /s |
| Output Characteristics | | | | | |
| Parameter | Conditions | Min | Typ | Max | Unit |
| Output Voltage Set point | Both outputs @ FL | ±11.82 | ±12.00 | ±12.18 | VDC |
| Output Current | | 0 | | ±0.625 | A |
| Output Current Limit Inception | | ±0.8 | ±1 | ±1.7 | A |
| Peak Short-Circuit Current | 10mΩ Short | | | ±3 | A |
| RMS Short-Circuit Current | 10mΩ Short | | ±0.5 | ±1 | A _{RMS} |
| External Load Capacitance | Each Output | 0 | | 220 | µF |
| Output Ripple and Noise 20 MHz bandwidth | 0.1 µF Ceramic + 10µF Tantalum See Fig 16 for setup | | 50 | 100 | mV _{PK-PK} |
| Output Regulation Line: Load: Cross Regulation: Overall Output Reg (Eq Loading): | Out1:10%, Out2:90% FL Over line, load & temp. | ±11.76 | ±0.1 ±0.1 2.5 | ±0.25 ±0.25 3.2 ±12.24 | %Vo %Vo %Vo V |

ELECTRICAL SPECIFICATIONS (continued)

9–36Vin, ±12V/±0.625Aout

Conditions: T_A = 25 °C, Airflow = 300 LFM, Vin = 24 VDC, Cin = 100 µF, unless otherwise specified.

| Absolute Maximum Ratings | | | | | |
|--|---|------|------|------|------|
| Parameter | Conditions | Min | Typ | Max | Unit |
| Input Voltage | Continuous Operation | 0 | | 36 | VDC |
| Operating Temperature T _{ref} , see Thermal Derating section | Open Frame | -40 | | +123 | °C |
| | Encapsulated Module | -40 | | +105 | °C |
| Storage Temperature | | -55 | | +125 | °C |
| Feature Characteristics | | | | | |
| Parameter | Conditions | Min | Typ | Max | Unit |
| Switching Frequency | | | 480 | | kHz |
| Output Over-voltage Protection | Non-latching | 115 | 130 | 140 | % |
| Over-temperature Protection | Avg. PCB temp, non-latching | | 135 | | °C |
| Backdrive Output Current in OFF state | Converter disabled | | 0 | 5 | mA |
| Power On to Output Turn-ON Time | V _{OUT} = 0.9*V _{OUT_NOM} | | 15 | 20 | mS |
| Enable to Output Turn-ON Time | V _{OUT} = 0.9*V _{OUT_NOM} | | 15 | 20 | mS |
| Output Enable ON/OFF Negative Enable Converter ON Converter OFF Positive Enable Converter ON Converter OFF | All voltages are WRT –Vin. | -0.7 | | 0.8 | VDC |
| | | 2.4 | | 15 | VDC |
| | Converter has internal pull-up of approx. 5V | 2.4 | | 20 | VDC |
| | | -0.7 | | 1.2 | VDC |
| Enable Pin Current Source/Sink | | | 0.25 | 1 | mA |
| Output Voltage Overshoot @ Startup | | | 0 | 2 | %Vo |
| Auto-Restart Period | (OVP, OCP) | | 100 | | ms |

ELECTRICAL SPECIFICATIONS (continued)

9–36Vin, ±12V/±0.625Aout

Conditions: Ta = 25 °C, Airflow = 300 LFM, Vin = 24 VDC, Cin = 100 µF, unless otherwise specified.

| Efficiency | | | | | |
|--|--|------|-----------|-----|------------------------|
| Parameter | Conditions | Min | Typ | Max | Unit |
| Full Load | Vin = 12Vin | 84 | 85 | | % |
| | Vin = 24Vin | 83 | 84 | | % |
| 60% Load | Vin = 12Vin | 84 | 85 | | % |
| | Vin = 24Vin | 81 | 83 | | % |
| Dynamic Response | | | | | |
| Parameter | Conditions | Min | Typ | Max | Unit |
| Load Change 25%-50% or 50%-75% of Iout Max, di/dt = 0.1 A/µs | Cout = 0.1 µF ceramic + 10 µF tantalum See Fig 16 | | 60 | 120 | mV |
| Settling Time to 1% of Vout | | | 50 | | µS |
| Load Change 25%-75% or 75%-25% of Iout Max, di/dt = 0.2 A/µs | Cout = 1 µF ceramic + 100 µF Electrolytic | | 50 | 100 | mV |
| Settling Time to 1% of Vout | | | 50 | | µS |
| Isolation Specifications | | | | | |
| Isolation Capacitance | | | 1000 | | pF |
| Isolation Resistance | | 10 | | | MΩ |
| Isolation Voltage | Input to Output - Open frame | 2250 | | | VDC |
| | Input to Output - Encapsulated | 1600 | | | VDC |
| Reliability | | | | | |
| Per Telcordia SR-332, Issue 2: Method I, Case 3 (Io=80% of Io_max, TA=40°C, airflow = 200 lfm, 90% confidence) | MTBF | | 4,442,107 | | Hours |
| | FITs (failures in 10 ⁹ hours) | | 225 | | /10 ⁹ Hours |

Notes:

1) CHARACTERISTIC CURVES:

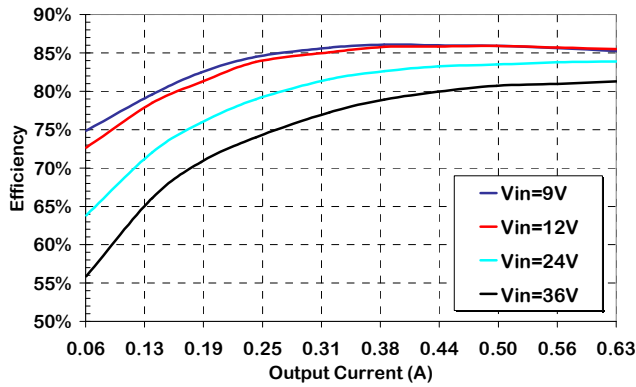


Figure 1. Efficiency vs Output Current, 300lfm airflow, 25°C ambient.

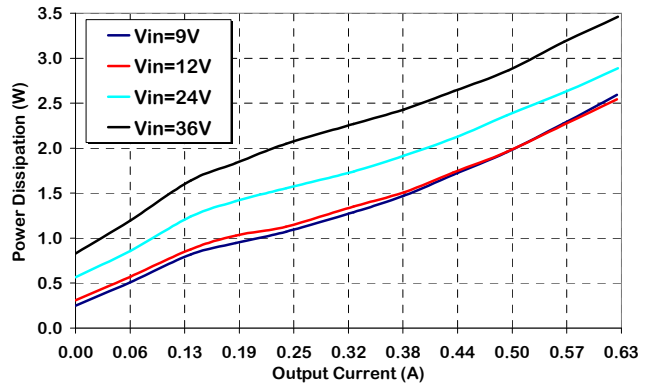


Figure 2. Power Dissipation vs. Load Current, 300lfm airflow, 25°C ambient.

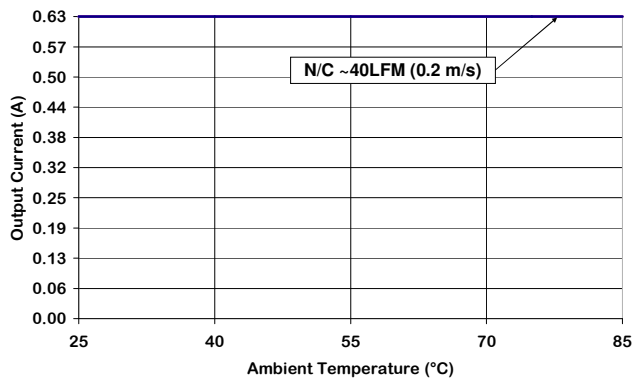


Figure 3. Output Current Derating vs Ambient Temperature & Airflow (Open Frame module) Airflow from pin 1 to 2; Vin = 12V,24V

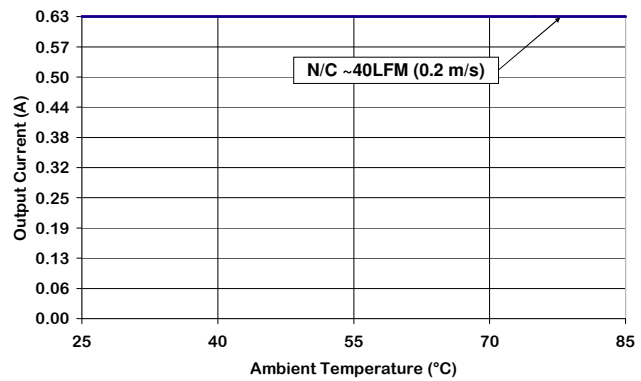


Figure 4. Output Current Derating vs Ambient Temperature & Airflow (Encapsulated module) Airflow from pin 1 to 2; Vin = 12V,24V

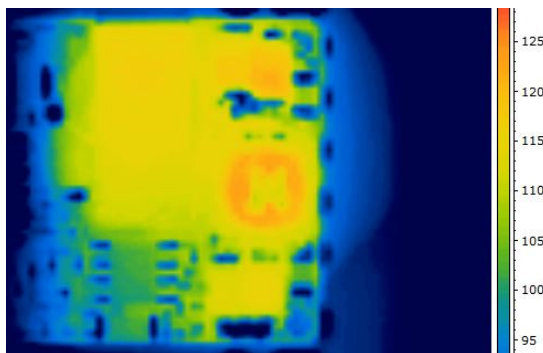


Figure 5. Thermal Image of CP15B2212518 ±0.625A output, 85C Ambient, 40lfm airflow, Vin = 24V, T_{max} = 123°C

CHARACTERISTIC WAVEFORMS:

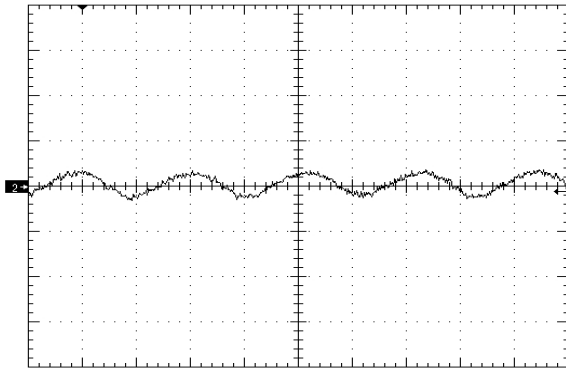


Figure 6. Input Reflected Ripple Current (10mA/div), time scale – 1uS/div. Vin=Vin_nom, full load (see Fig 15)

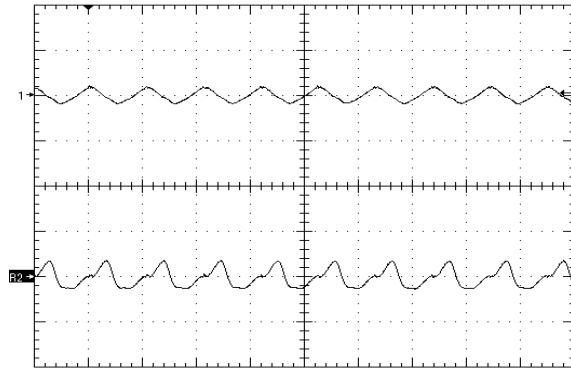


Figure 7. Output Voltage Ripple (50mV/div), time scale – 2uS/div. Vin=Vin_nom, full load Cout=0.1uF ceramic + 10uF Tantalum (see Fig 16)

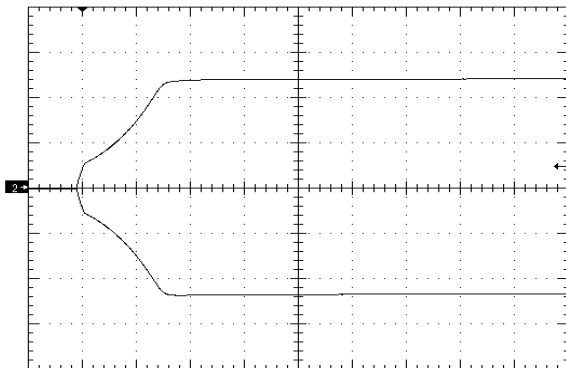


Figure 8. Startup Waveform via Enable Pin, time scale 10mS/div. Vin=Vin_nom, Iout=no load Cout=0, Ch1=+Vout (5V/div), Ch2=-Vout (5V/div)

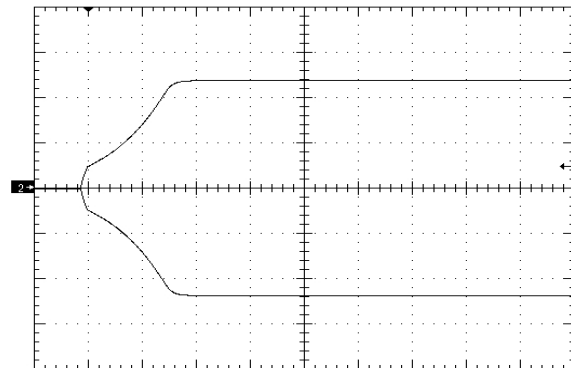


Figure 9. Startup Waveform via Input Voltage, time scale 10mS/div. Vin=Vin_nom, Iout=full load Cout=10uF, Ch1=+Vout (5V/div), Ch2=-Vout (5V/div)

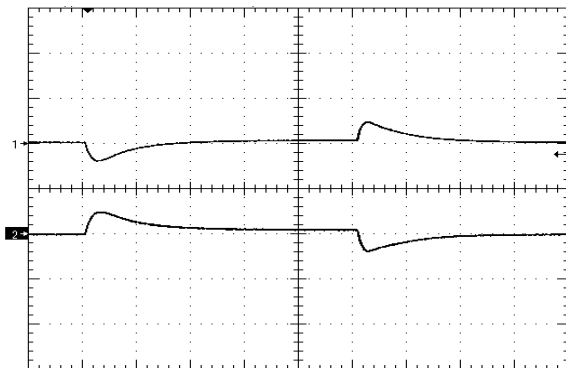
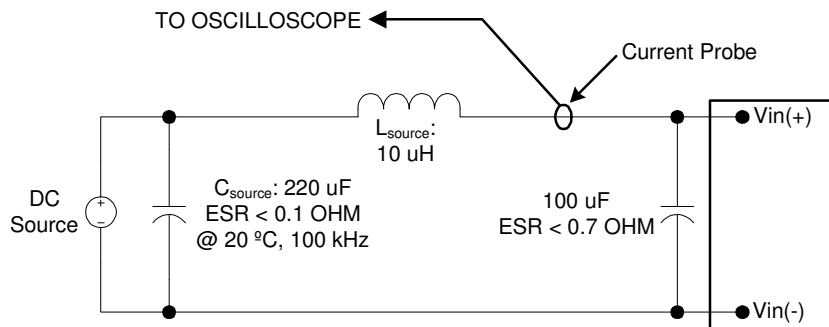


Figure 10. Transient Response (100mV/div), di/dt=0.1A/uS, 25%-75%-25% of full load, Cout=Fig16 time scale: 200uS/div. Ch1=+Vout, Ch2=-Vout

Application Notes

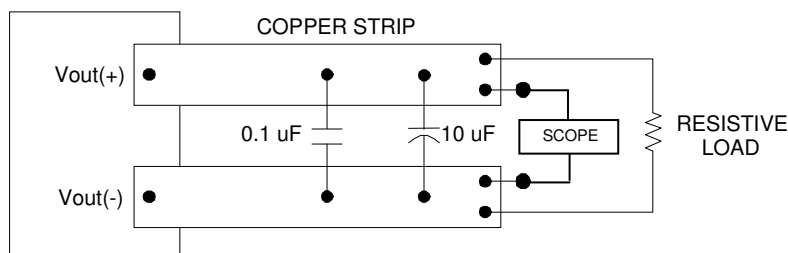
INPUT REFLECTED RIPPLE TEST SETUP:



Note: Measure input reflected-ripple current with a simulated source inductance (L_{test}) of 10 μ H. Capacitor C_s offsets possible source impedance.

Figure 11. Input Reflected-ripple Current Test Setup.

OUTPUT RIPPLE TEST SETUP:



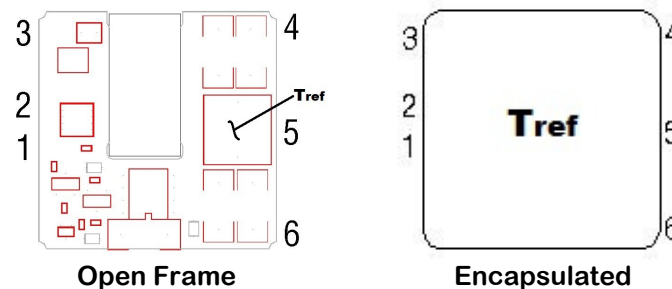
Use a 0.1 μ F X7R ceramic capacitor and 10 μ F @20V low ESR tantalum capacitor. Scope measurement made using a BNC socket. Position the load 3 in. [76mm] from module.

Figure 12. Peak-to-Peak Output Noise Measurement Test Setup (each output.)

Application Notes (cont)

Thermal Derating

- It is preferable that the DC-DC module have an unobstructed flow of air across it for best thermal performance. Components taller than ~ 2mm in front of the module can deflect airflow and possibly create hotspots.
- Significant cooling is achieved through conductive flow from the modules I/O pins to the host PCB. Sufficiently large traces connecting the dc-dc converter to the source and load will help ensure thermal derating performance will meet or exceed the derating curves published in this datasheet.
- If the module is expected to be operated near the load limits defined in the derating curves, in-system verification of module derating performance should be performed to ensure long-term system reliability. Peak temperatures are to be measured using infrared thermography or by gluing a fine gauge (AWG #40) thermocouple at the T_{ref} location(s) shown below. Temperature at the specified location(s) should be kept below 123°C for open frame units, 105°C for encapsulated modules in order to maintain optimum converter reliability.



Input Undervoltage Lockout

- The converter is disabled until the input voltage has exceeded the UVLO turn-on threshold. Once the input voltage exceeds this level (see Input Under-Voltage Lock-out in Electrical Specifications table) the module will commence soft-start. Hysteresis of 1-3 volts minimizes the likelihood of pulling the input voltage below the turn-off threshold during startup which could create an undesirable on/off cycling condition. The converter will continue to operate until the input voltage subsequently falls below the UVLO turn-off threshold.

Enable Pin Function

- The module has a remote enable function that allows it to be turned on or off remotely. The Enable pin is referenced to the negative input pin (-Vin) of the converter. Modules can be ordered with either negative or positive enable.
- The negative enable option the module will not turn on unless the enable pin is connected to -Vin. The positive enable option allows the converter to turn on as soon as voltage sufficient to exceed the UVLO of the converter has been applied to the input terminals. In this case the module is turned off by connecting the Enable pin to -Vin. On/off thresholds are located in the Electrical Specifications table.

Application Notes (cont)

Output Overvoltage Protection

- The module has an independent feedback loop that will disable the output of the converter if a voltage greater than about 125% of the nominal set point is detected. When this threshold is reached, the converter will shut down and remain off for the amount of time specified by the Auto-Restart Period. The converter will attempt a restart once this period of time has elapsed.

Output Overtemperature Protection

- To provide protection under certain fault conditions, the unit is equipped with a thermal shutdown circuit. The unit will shutdown if the average PCB temperature exceeds approx. 135°C, but the thermal shutdown is not intended as a guarantee that the unit will survive temperatures beyond its rating. The module will automatically restart once it has cooled below the shutdown temperature minus hysteresis (typically 20 deg C.)

SMT Version Layout Considerations (if applicable)

- Copper traces with sufficient cross-section must be provided for all output & input pins. SMT pads tied to internal power/ground planes must have multiple vias around each SMT pad to couple expected current loads from module pins into internal traces/planes. One 0.024" (0.6mm) diameter via for each 4A of expected source or load current must be provided as close to the termination as possible, preferably in the direction of current flow from SMT pad to load. Vias must be at least 0.024" (0.6 mm) away from the SMT pad to prevent solder from flowing into the vias.
- SMT pads on the host card are to be 0.075" (1.9mm) diameter. Solder paste screen opening should be 0.070" diameter and the screen should be 0.006" (0.15 mm) thick (other thicknesses are possible; 0.006" provides a good compromise between solder volume and coplanarity compensation.)

Paralleling Converters

- Modules may be paralleled but it is recommended that the total power draw not exceed the output power rating of a single module. External sharing controllers are recommended for reliability and to ensure equal distribution of the load to the converters.

Application Notes (cont)

EMC Compliance

To meet Class B compliance for EN55032 (CISPR 32) or FCC part 15 sub part j, the following input filter is required:

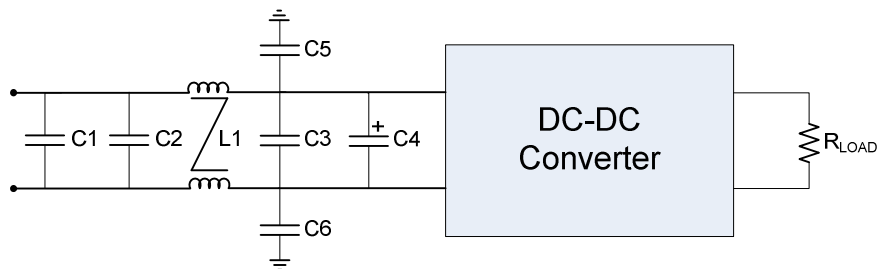


Figure 13. EMI Filter

| | |
|------------|--|
| L1 = | 0.77 mH Common Mode Inductor (Pulse P0422NL) |
| C1,C2,C3 = | 2.2uF ceramic |
| C4 = | 100uF electrolytic |
| C5,C6 = | 10nF (@2kV if output is ref. to gnd.) |

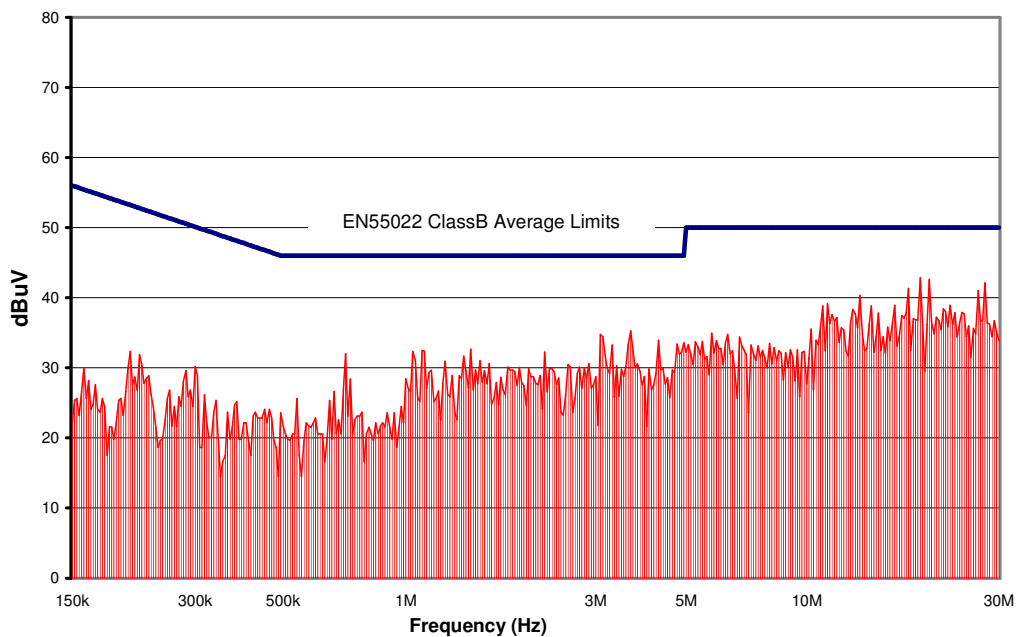


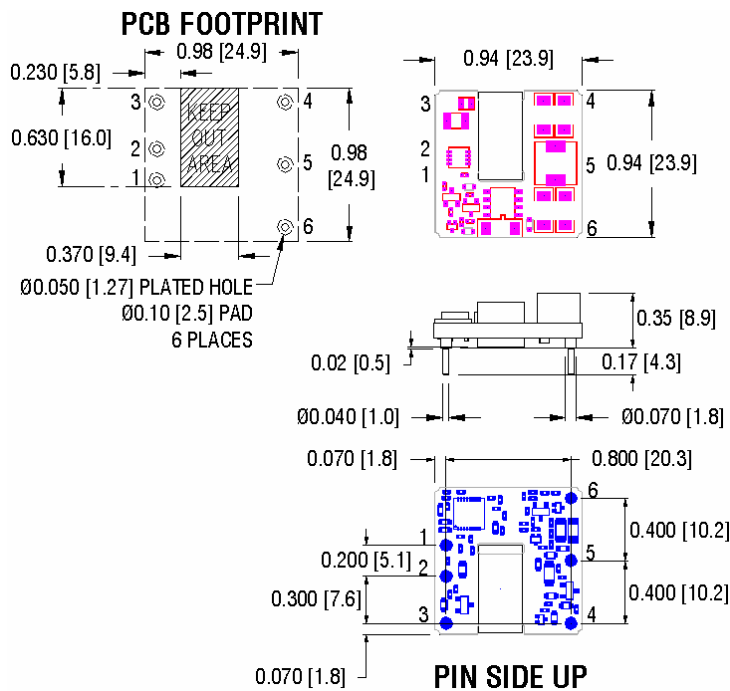
Figure 14. CP15_2212518 Conducted Emissions using above specified input filter.
 Vin = 24V, Full Resistive Load

MODULE PIN ASSIGNMENT:

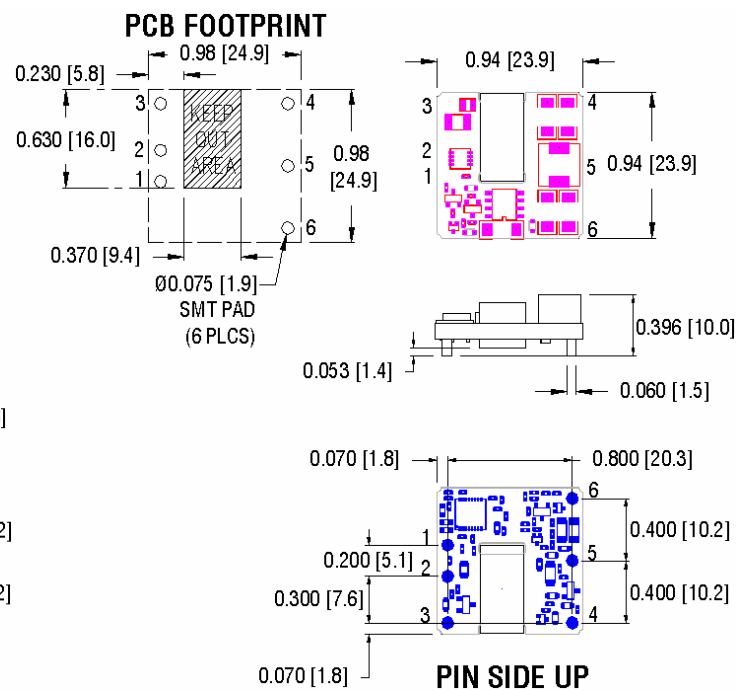
| PIN # | DESIGNATION | NOTES |
|-------|---------------------|--|
| 1 | V _{IN} (+) | 1) All dimensions in inches [mm] Tolerances: .xx ± 0.02 [.x ± .5] .xxx ± 0.010 [.xx ± .25] |
| 2 | V _{IN} (-) | |
| 3 | On/Off | 2) TH pins Ø 0.040" [1.02] with Ø 0.070" [1.77] standoff shoulders. |
| 4 | -V _{OUT} | 3) SMT pins are Ø 0.060" |
| 5 | Common | 4) Keep Out Area – no copper traces or vias should be placed in this area. |
| 6 | +V _{OUT} | 5) All pins are gold plated with nickel under plating (ROHS). |
| | | 6) Weight: 7.54 g (0.266 oz.) open frame, 19g (0.67 oz.) encapsulated |
| | | 7) Workmanship: Meets or exceeds IPC-A-610 Class II |

MECHANICAL OUTLINE - Open Frame:

Through-hole



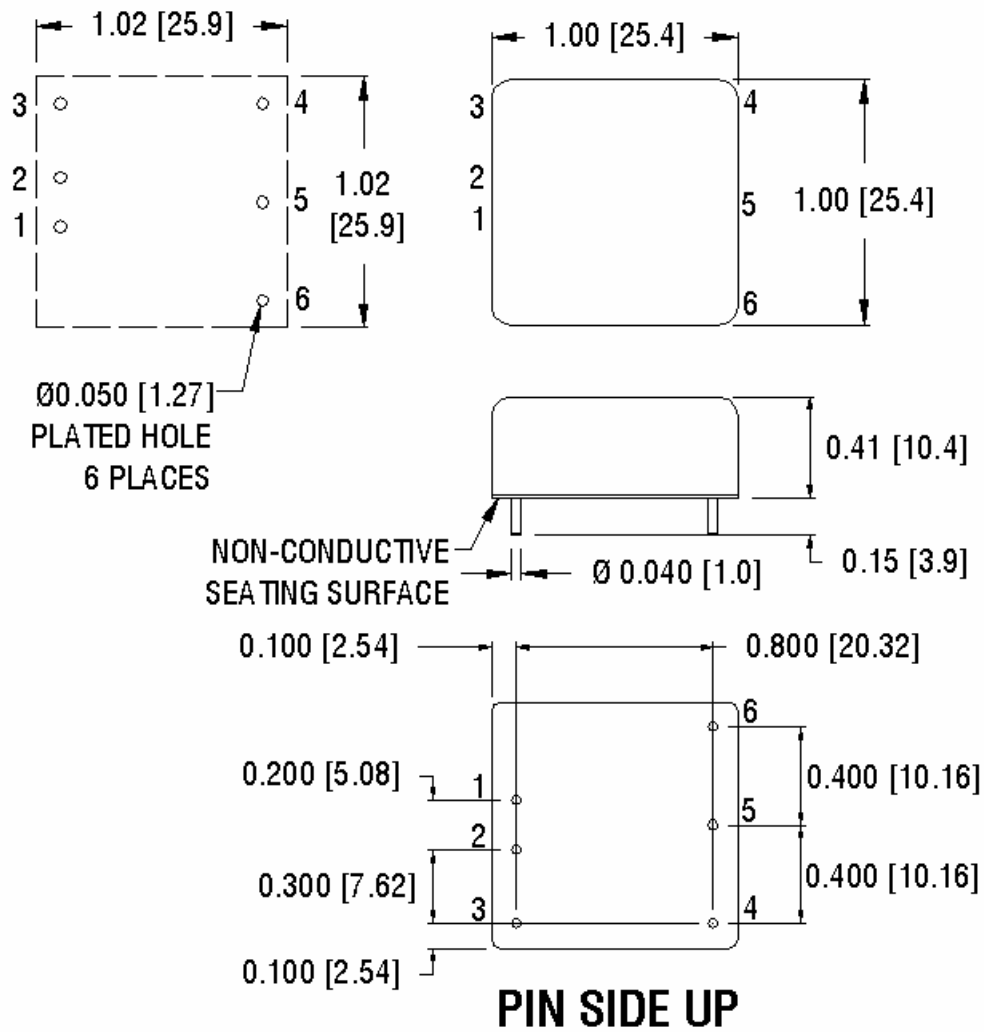
Surface Mount



Note: keep out area should be free of copper traces

MECHANICAL OUTLINE – Encapsulated Module:

PCB FOOTPRINT



| Ordering Information: | | | | | | | |
|------------------------------|------------------------------------|-----------------------|-----------------------|-----------------------|----------------------|---|-------------------|
| Product Series | Package Configuration | No. of Outputs | Output Voltage | Output Current | Input Voltage | Enable logic option | SMT Option |
| CP15 | B or C | 2 | 2 | 125 | 18 | N or P | S |
| 15W 1x1 | B = Open Frame C = Encapsulated | 2 outputs | ±12V | ±0.625A | 9 – 36V | N = Negative P = Positive Blank = No Enable Pin | Surface Mount |

Rev 1.01, 24-Feb-21