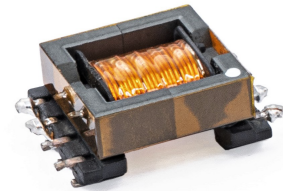




EFD15 Flyback Transformer

AEFD15-4603

- EFD15 SMD Package
- Other Winding configurations available
- Operating Temperature range: -20°C to +125°C

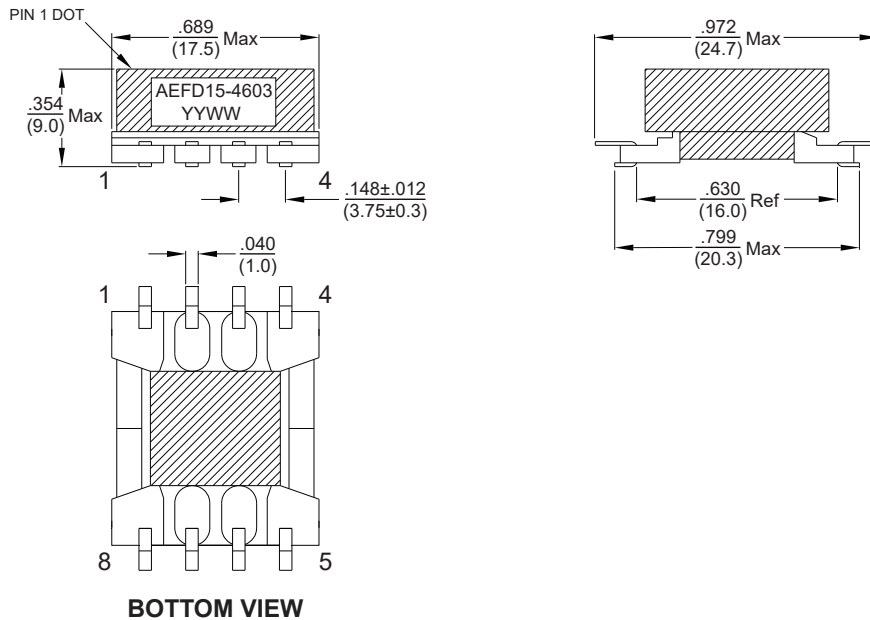


Electrical Specifications @ 25°C					
Inductance @100KHz, 0.1V (1-2)	DCR (mΩ) Max		Turns Ratio @15.75KHz, 1.0V (1-2) : (5-6)	Hi-Pot 50/60Hz / 3mA / 1Sec	
	(1 - 2)	(5 - 6)		PRI - SEC	SEC - CORE
10.0μH ± 10%	25	120	1 : 3.8 ±2%	1500VAC	1000VAC

All specifications subject to change without notice.

MECHANICAL

DIMENSIONS: $\frac{\text{inch}}{\text{(mm)}}$



SCHEMATIC

