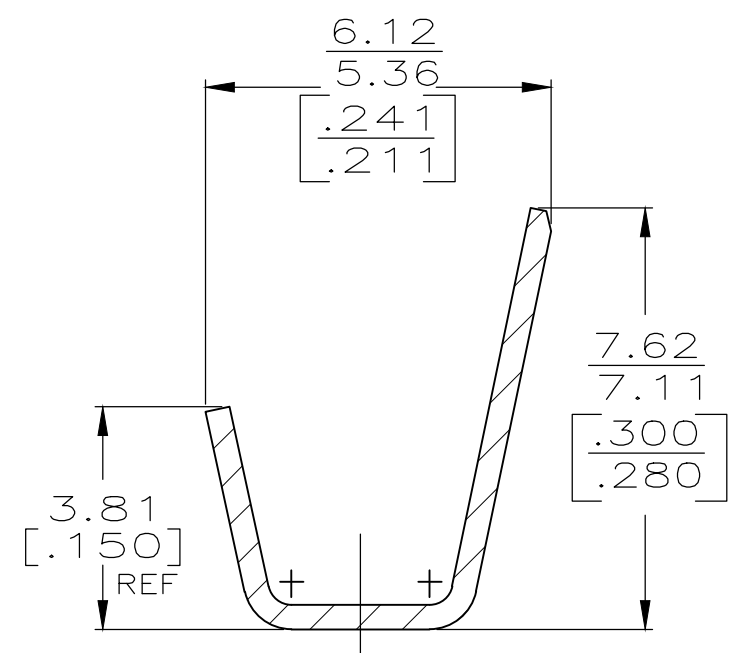
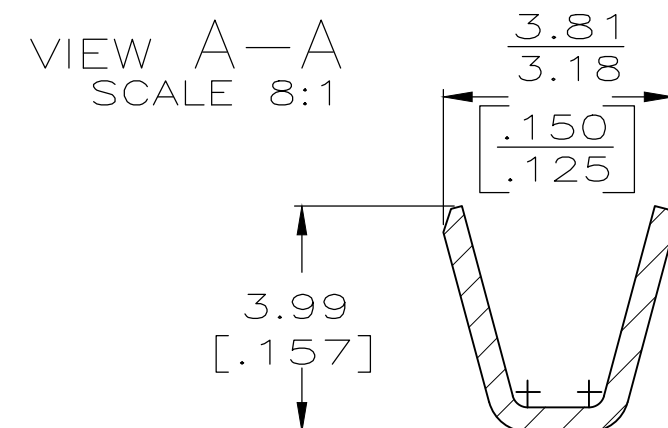
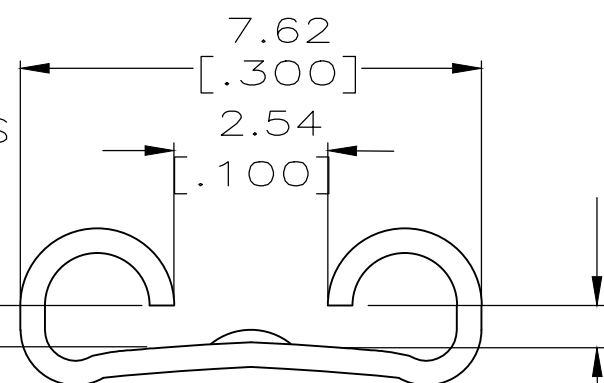
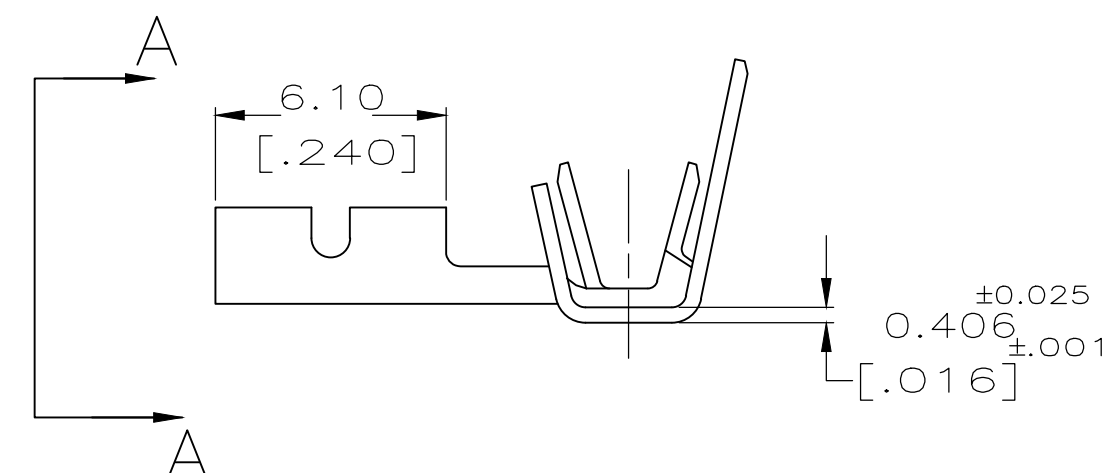
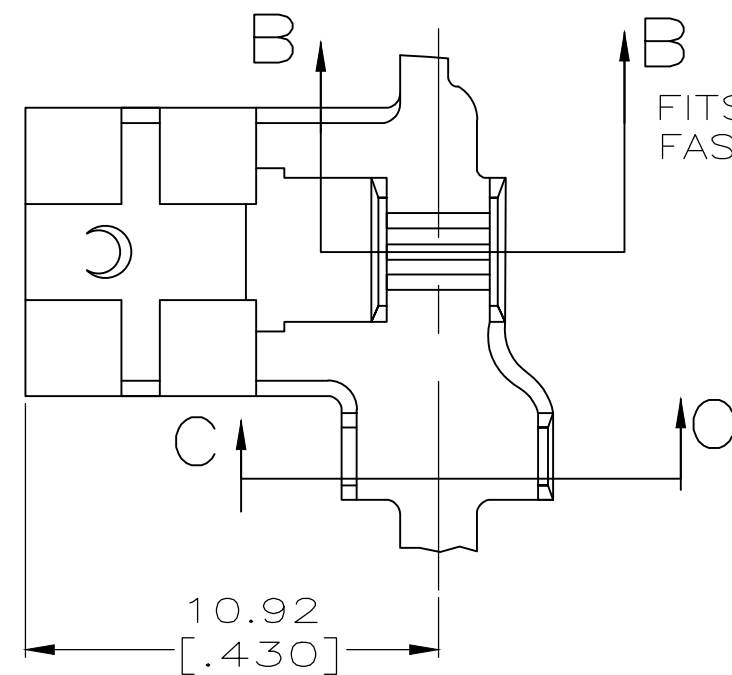


THIS DRAWING IS UNPUBLISHED. RELEASED FOR PUBLICATION  
 © COPYRIGHT - By - ALL RIGHTS RESERVED.

LOC	DIST	REVISIONS					
AF	50	P	LTR	DESCRIPTION	DATE	DWN	APVD
			H1	REVISED PER ECR-20-009164	5AUG2020	MK	DH



- 1 CONTINUOUS STRIP ON REELS
- △2 TIN 0.002032 [.000080] MIN THK PER MIL-T-10727
- △3 SPECIAL REELING
- △4 PRELIMINARY - NOT FOR PRODUCTION

OBSOLETE	-	2.79-5.08	[#18-#14]	0.84-0.76	△3 △4 63538-3
	TIN	[.110-.200]	OR	[.033-.030]	<del>63538-2</del>
	-		TWO [#18'S]		63538-1
	FINISH	INSUL RANGE	WIRE SIZE	MATING TAB THICKNESS	PART NO

THIS DRAWING IS A CONTROLLED DOCUMENT.		DWN	JR RUTH	7/31/89	TE Connectivity RECPT, FASTON, FLAG, LOW-INSERTION, .250 SERIES					
DIMENSIONS:		CHK	MS FEHER	7/31/89				NAME		
mm [INCHES]		APVD	R KUZO	7/31/89				PRODUCT SPEC		
TOLERANCES UNLESS OTHERWISE SPECIFIED:		APPLICATION SPEC						RESTRICTED TO		
0 PLC ± - 1 PLC ± - 2 PLC ± - 3 PLC ± 0.25 [.010] 4 PLC ± - ANGLES ± -		MATERIAL			SIZE	CAGE CODE	DRAWING NO			
BRASS		SEE TABLE			WEIGHT	A300779	C-63538			
CUSTOMER DRAWING				SCALE	5:1	SHEET	1 OF 1			
				REV	H1					