

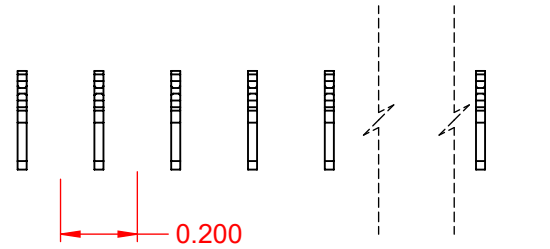
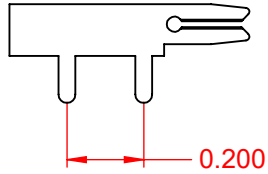
TOLERANCE UNLESS OTHERWISE SPECIFIED	
.X	±0.25
.XX	±0.13
.XXX	±0.05

THIS IS A C.A.D. GENERATED DRAWING
DO NOT MAKE MANUAL REVISIONS TO MASTER.

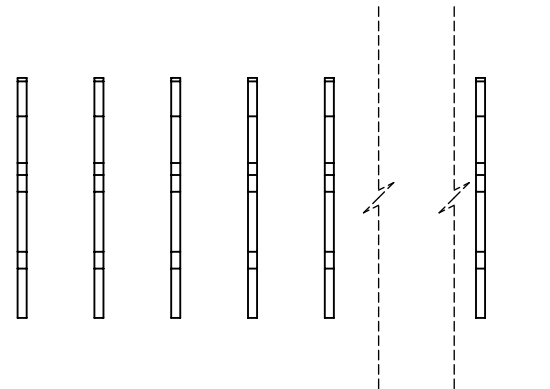


ISSUE NUMBER	
ORIGINAL	①



CONTACT 100-290-202



.200 CONTACT SPACING
TOTAL NUMBER OF CONTACTS 58



NOTE:
CONTACTS ARE HELD IN
A CARRIER FOR EASE OF ASSEMBLY

105 SERIES - VERTICAL CONTACT PATTERN		ACAD REFERENCE NO.: 105 Assembly	
		DRAWN: C.B	DATE: April 8, 2020
 EDAC INC TORONTO, ONTARIO CANADA YOUR CONNECTION TO QUALITY & SERVICE		CHECKED:	
		DATE:	
 THIS SERIES FULLY CONFORMS TO THE EUROPEAN UNION DIRECTIVES 2011/65/EU FOR RoHS COMPLIANCY.		SCALE: 2:1	SHEET 1 OF 1
		DRAWING NUMBER: 105 Assembly	
THESE DRAWINGS AND SPECIFICATIONS ARE THE PROPERTY OF EDAC INC., AND SHALL NOT BE REPRODUCED, OR COPIED OR USED AS THE BASIS FOR THE MANUFACTURE OR SALE OF APPARATUS WITHOUT WRITTEN PERMISSION.		PART NUMBER: 105-058-202-200	
		1	