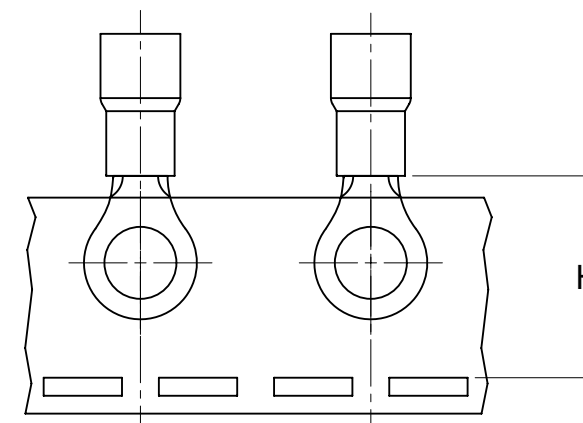
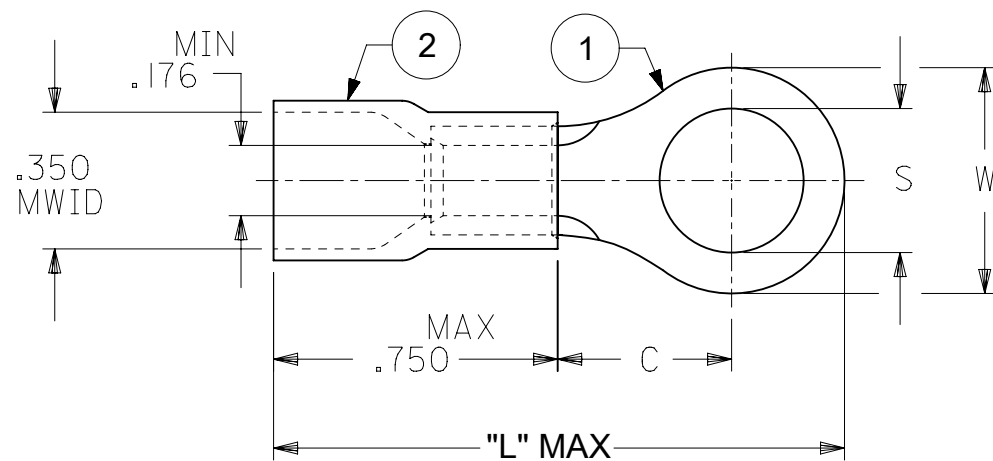


MATERIAL NO., LOOSE PC	ENGINEERING P/N	MATERIAL NO. (TAPE)	ENGINEERING P/N	W ±.010	C MIN	"L" MAX	THKNS, REF	S ±.005	H NOMINAL
190670001	D-950-06	---- (A2)	----	.468/11.89	.380/9.65	1.41 (35.8)	.045/1.14	.146/3.71	-
190670003	D-950-08	190670005	D-950-08T	.468/11.89	.380/9.65	1.41 (35.8)	.045/1.14	.173/4.39	1.07/27.2
190670006	D-950-10	190670007	D-950-10T	.468/11.89	.380/9.65	1.41 (35.8)	.045/1.14	.198/5.03	
190670008	D-950-14	190670011	D-950-14T	.468/11.89	.380/9.65	1.41 (35.8)	.045/1.14	.265/6.73	
190670012	D-950-56	190670013	D-950-56T	.468/11.89	.380/9.65	1.41 (35.8)	.045/1.14	.328/8.33	
190670016	D-951-10	190670017	D-951-10T	.588/14.94	.445/11.30	1.54 (39.1)	.045/1.14	.198/5.03	1.07/27.2
190670018	D-951-14	---- (A2)	----	.588/14.94	.445/11.30	1.54 (39.1)	.045/1.14	.265/6.73	-
190670025	D-951-56	190670026	D-951-56T	.588/14.94	.445/11.30	1.54 (39.1)	.045/1.14	.328/8.33	1.07/27.2
190670022	D-951-38	190670024	D-951-38T	.588/14.94	.445/11.30	1.54 (39.1)	.045/1.14	.390/9.91	
190670128	D-951-76	---- (A2)	----	.588/14.94	.445/11.30	1.54 (39.1)	.045/1.14	.453/11.51	-
190670030	D-952-38	-	-	.810/20.57	.628/15.95	1.84 (46.7)	.050/1.27	.390/9.91	-
190670031	D-952-76	-	-	.810/20.57	.628/15.95	1.84 (46.7)	.050/1.27	.453/11.51	-
190670028	D-952-12	190670328	D-952-12T	.810/20.57	.628/15.95	1.84 (46.7)	.050/1.27	.515/13.08	1.40/35.6
190670129	D-952-58	---- (A2)	----	.810/20.57	.628/15.95	1.84 (46.7)	.050/1.27	.656/16.66	-
190670032	D-953-12	-	-	1.125/28.58	1.005/25.53	2.37 (60.2)	.050/1.27	.515/13.08	-
190670034	D-953-58	-	-	1.125/28.58	1.005/25.53	2.37 (60.2)	.050/1.27	.656/16.66	-
190670033	D-953-34	-	-	1.125/28.58	1.005/25.53	2.37 (60.2)	.050/1.27	.781/19.84	-
190670035	D-956-06	---- (A2)	----	.374/9.50	.380/9.65	1.36 (34.5)	.045/1.14	.146/3.71	-
190670037	D-956-08	190670038	D-956-08T	.374/9.50	.380/9.65	1.36 (34.5)	.045/1.14	.173/4.39	1.07/27.2
190670039	D-956-10	190670040	D-956-10T	.374/9.50	.380/9.65	1.36 (34.5)	.045/1.14	.198/5.03	
190670041	D-956-14	190670042	D-956-14T	.374/9.50	.380/9.65	1.36 (34.5)	.045/1.14	.265/6.73	



FOR TAPE APPLIED
PART NUMBERS

NOTE(S):

- MATERIAL: ITEM ① - COPPER, ELECTRO-TIN PLATED
ITEM ② - MOLDED NYLON, RED
- ASSEMBLY IS RoHS COMPLIANT.
- MWID = MAXIMUM WIRE INSULATION DIAMETER.

FUNCTIONAL SYMBOLS	THIS DRAWING CONTAINS INFORMATION THAT IS PROPRIETARY TO MOLEX ELECTRONIC TECHNOLOGIES, LLC AND SHOULD NOT BE USED WITHOUT WRITTEN PERMISSION											
	DIMENSION UNITS		SCALE		CURRENT REV DESC: OAL "L" DIM'S UPDATED							
	mm		NTS									
	GENERAL TOLERANCES (UNLESS SPECIFIED)											
DIVISIONAL SYMBOLS	4 PLACES		±		MM		INCH		EC NO: 682401			
	3 PLACES		±						DRWN: DMYRICK 2021/10/21			
	2 PLACES		±						CHKD: KBURROUGHS 2021/10/25			
	1 PLACE		±						APPR: KBURROUGHS 2021/10/25			
0 PLACES		±						INITIAL REVISION:				
ANGULAR TOL		± °						DRWN: EHILE 2007/08/22				
								APPR: JMACNEIL 2007/09/19				
DRAFT WHERE APPLICABLE MUST REMAIN WITHIN DIMENSIONS				THIRD ANGLE PROJECTION		DRAWING		SERIES		DOCUMENT NUMBER		
						B-SIZE		19067		SD-19067-017		
										DOC TYPE DOC PART REVISION		
										PSD 001 A2		
										MATERIAL NUMBER CUSTOMER SHEET NUMBER		
										SEE CHART GENERAL MARKET 1 OF 1		