

SPICE-Equivalent circuit model library

Table 1. Equivalent circuit data

Part Number	L (μ H)	F _{res} (MHz)	C1 (pF)	R1 (Ω)	R2 Nominal DCR of winding (Ω)
HCM1A1707-1R0-R	1	33.2	22.98	888.47	0.0014
HCM1A1707-1R5-R	1.5	26.1	24.74	1023.94	0.0021
HCM1A1707-2R2-R	2.2	20.8	26.53	1170.82	0.0024
HCM1A1707-3R3-R	3.3	16.4	28.56	1349.34	0.0031
HCM1A1707-4R7-R	4.7	13.3	30.46	1527.13	0.0044
HCM1A1707-6R8-R	6.8	10.7	32.57	1737.88	0.0066
HCM1A1707-8R2-R	8.2	9.6	33.70	1855.57	0.0081
HCM1A1707-100-R	10	8.5	34.94	1989.04	0.0093
HCM1A1707-150-R	15	6.7	37.62	2292.32	0.0145
HCM1A1707-220-R	22	5.3	40.34	2621.14	0.0205
HCM1A1707-330-R	33	4.2	43.42	3020.80	0.0351
HCM1A1707-470-R	47	3.4	46.31	3418.83	0.041
HCM1A1707-680-R	68	2.7	49.53	3890.64	0.051

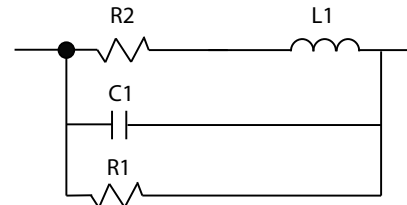


Figure 1. Equivalent circuit

Disclaimer

The data provided is for reference and is intended for evaluation purposes only. Users should verify all intended results in the end application.

Eaton
Electronics Division
 1000 Eaton Boulevard
 Cleveland, OH 44122
 United States
www.eaton.com/electronics

© 2018 Eaton
 All Rights Reserved
 Printed in USA
 Publication No. HCM1A1707 Spice
 April 2018