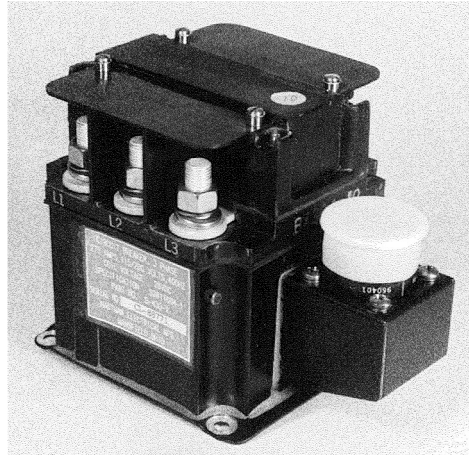


**B-430 Series, Rated up to 275 Amps, 115/200 VAC, 400 Hz**

**Product Facts**

- 3PST, Double break, magnetic latching
- Gasket sealed
- Auxiliary contacts available
- Meets many requirements of MIL-PRF-6106



**Performance Data**

**Electrical Characteristics**

**Contact Arrangement** — 3PST, Double Break, Magnetic Latching  
**Rated Operating Voltage** — 115/200 VAC, 400 Hz, 3 phase  
**Resistive Rating** — 275 Amps  
**Interrupt Rating** — 2,000 Amps

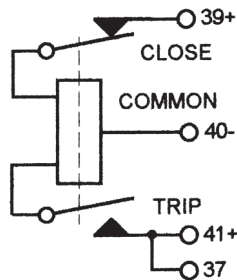
**General Characteristics**

**Temperature Range** — -55°C to +85°C  
**Operating Cycles (Life) at Rated Resistive Load, Min.** — 50,000 cycles  
**Operating Cycles (Life) Mechanical, Min.** — 100,000 cycles  
**Dielectric Strength** — All Circuits to Ground — 1,500 Vrms  
 Circuit to Circuit — 1,500 Vrms  
 Coil to Ground and Aux. Contacts — 1,000 Vrms  
**Insulation Resistance, Initial** — 100 megohm min.  
**Altitude** — 45,000 ft.  
**Weight, Max.** — 4.0 lbs

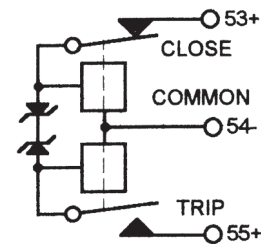
**Coil Characteristics**

**Duty Cycle** — B-430-1 — Continuous, self-deenergizing (Type A, See diagram below)  
 B-430Z — Continuous, self-deenergizing with suppression (Type B, See diagram below)  
**Operating Voltage Close, @ 85°C** — Min. — 15 Vdc  
 Max. — B-430-1 — 28 Vdc  
 B-430Z — 29 Vdc  
**Operating Voltage Trip, @ 85°C** — Min. — 15 Vdc  
 Max. — B-430-1 — 28 Vdc  
 B-430Z — 29 Vdc  
**Coil Current Closing, Max.** — 6 Amps  
**Coil Current Trip, Max.** — 6 Amps

**Coil Type**



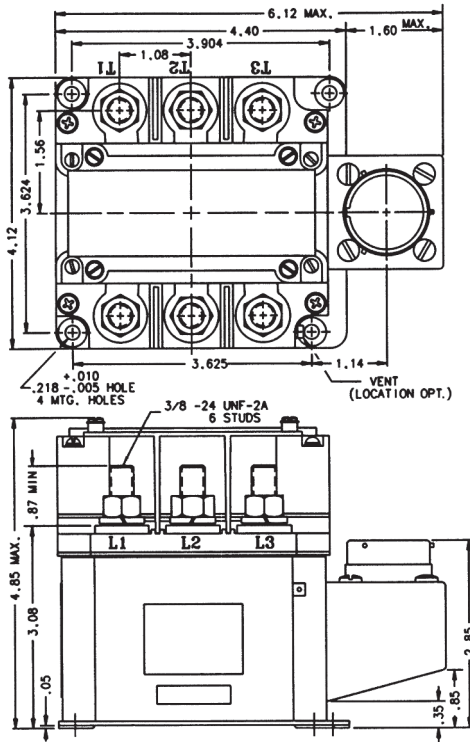
A — Continuous, Self-Deenergizing



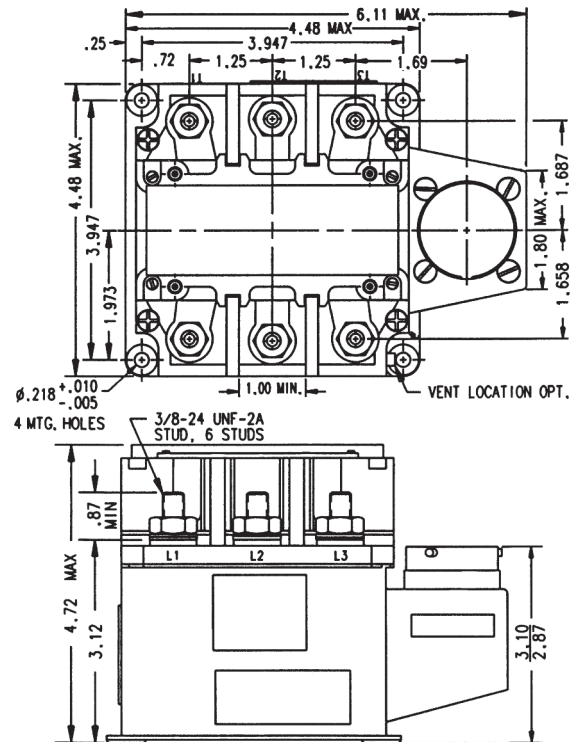
B — Continuous, Self-Deenergizing with Suppression

For factory-direct application assistance, phone 419-521-9500 or fax 419-526-2749.

**B-430 Series, Rated up to 275 Amps, 115/200 VAC, 400 Hz (Continued)**

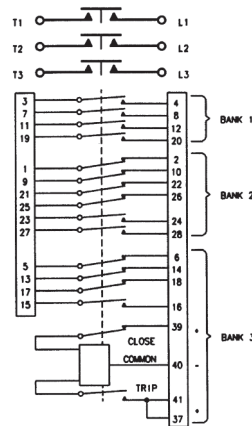


Mounting Style A

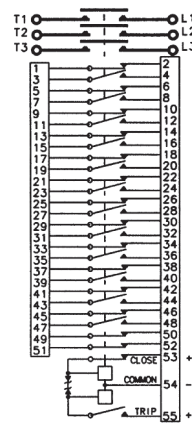


Mounting Style B

**Circuit Configurations** (Consult factory for other available circuit configurations)



Circuit Configuration 1



Circuit Configuration 2

HARTMAN Part Number	Construction Type	Mounting Style	Coil Type	Circuit Config.	TE Part Number
B-430-1	Gasket/Vented	A	A	1	1616023-1
B-430Z	Gasket/Vented	B	B	2	1616023-2

For factory-direct application assistance, phone 419-521-9500 or fax 419-526-2749.