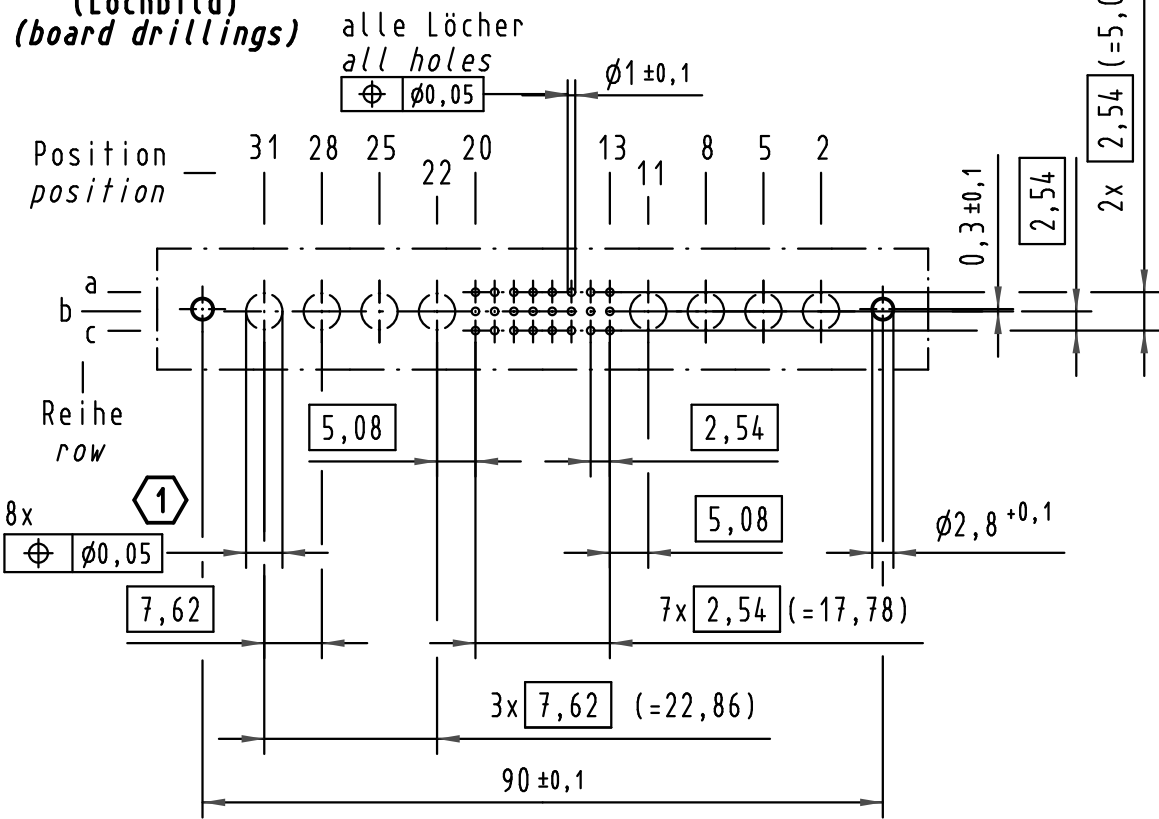
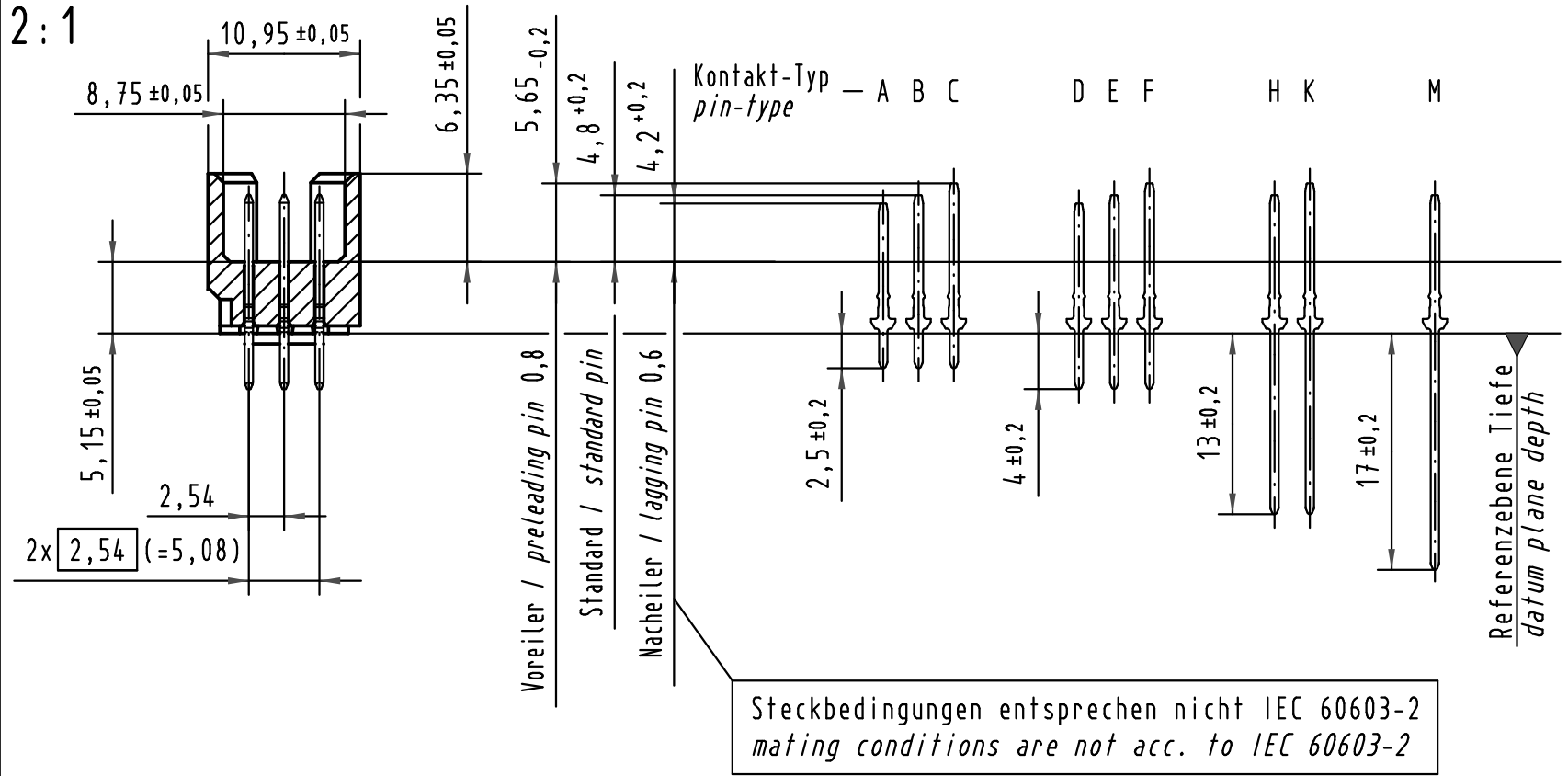


Alle Rechte vorbehalten/ All rights reserved

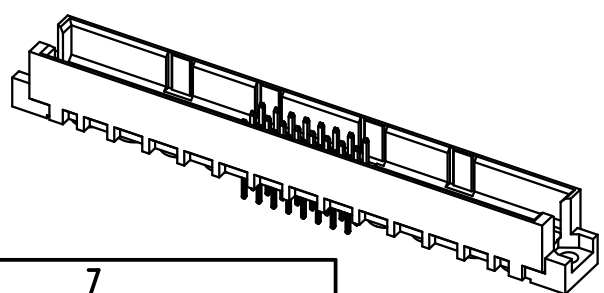
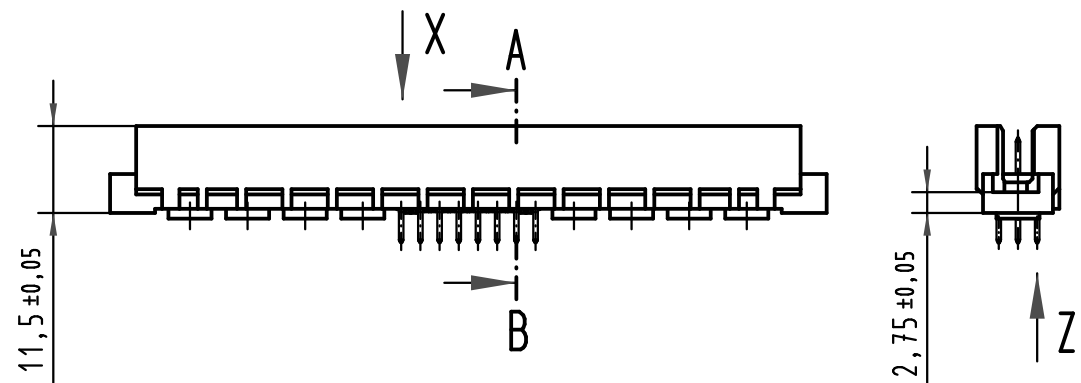
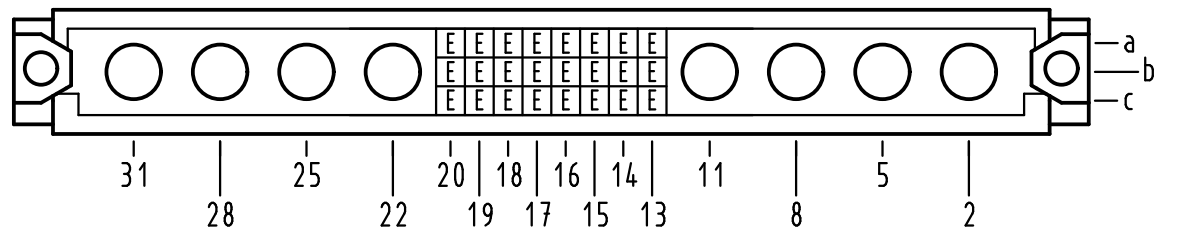
**X**  
(Lochbild)  
(board drillings)



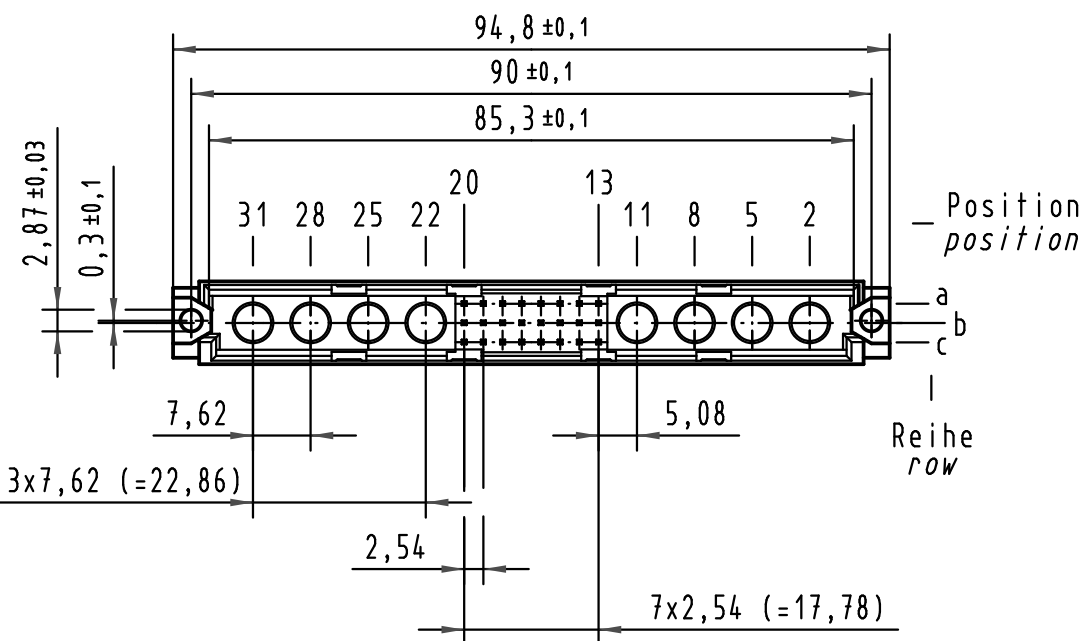
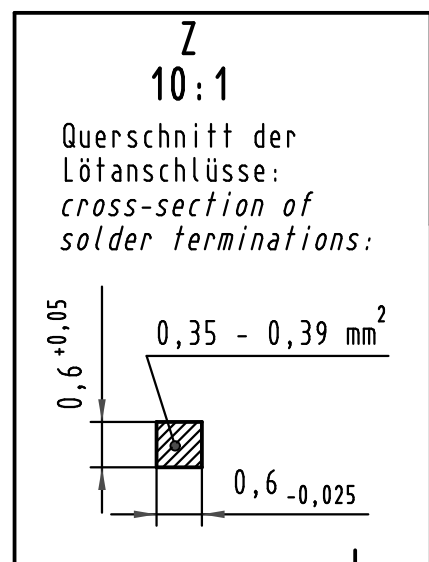
**A-B**  
2:1



**X** Kontaktbelegung  
contact loading



① Lochdurchmesser ist auf den jeweiligen Kontakt abzustimmen  
hole diameter is to be coordinated with the respective contact



09 73 124 6903	2	Au flash over PdNi over Ni
Bestell-Nr. part-No.	Anforderungsstufe nach IEC performance level acc. to IEC	Kontaktoberfläche contact plating

All Dimensions in mm Original Size DIN A 3		Techn. Character.		Nicht tolerierte Maß/Free size tolerances IEC 60603-2	
		Dat.	Name	Maßstab/Scale	
		Detail.	14.02.05 Hil	1:1	
		Insp.	14.02.05 kfoe	2:1	
		Stand.		10:1	
35548	15.07.09 hsv	HARTING Electronics GmbH & Co. KG		type M inverse 24+8	
32541		D-32339 ESPELKAMP		Messerleiste Einlöt 4,0	
Mod.	Dat.	Name		male connector solder 4,0	
				TB 09 73 124 x903	
				Blatt/page	
				Sub.	