

## Amphenol Canada Corp - End of Life / Discontinuation Notice (DN)

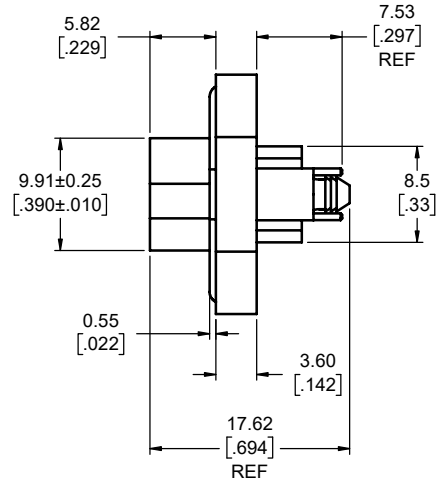
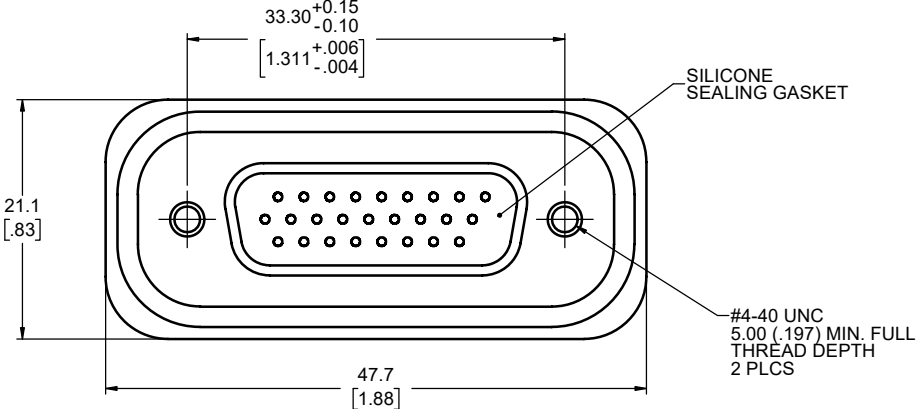
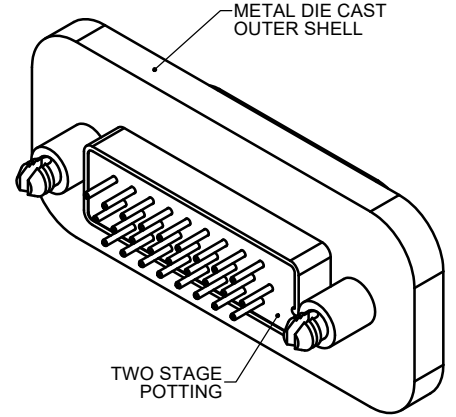
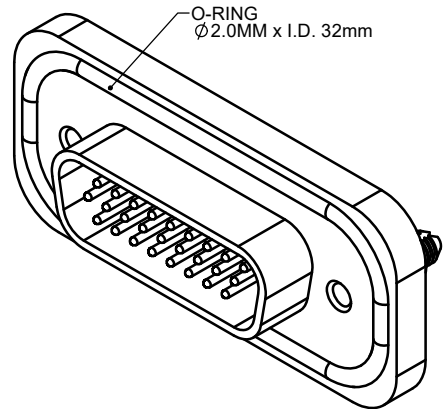
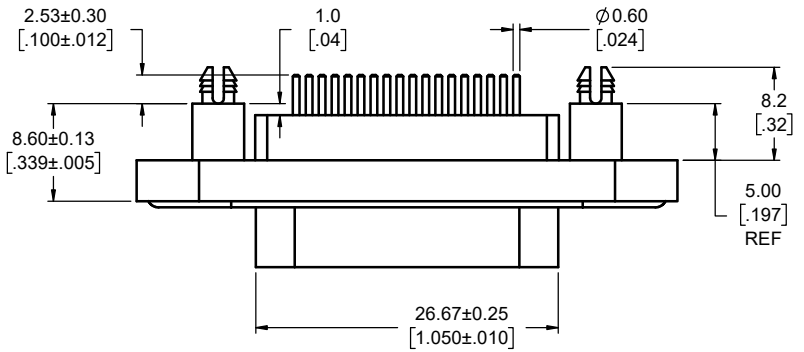
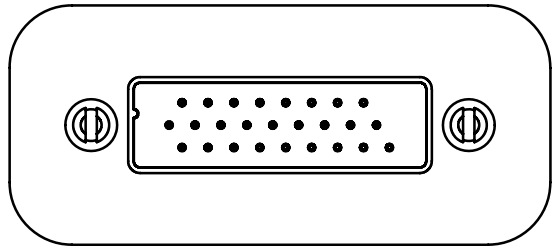
|                           |  |
|---------------------------|--|
| DN Date                   | May 9, 2022  |
| Supplier Name:            | Amphenol   |
| Amphenol Canada DN Number | DN-C1034   |
| Reason for Notification   | Due to reduced sales volumes and age of component tooling, this Discontinuation Notice is to eliminate some old 1st Generation designs and use alternate improved 2nd Generation designs where possible. |
| Last Time Buy Date        | Varies - see comments below. Some parts have available component inventory that can be used for last time buys.  |

| Customer Part Number | Amphenol Old Part Number | Proposed Alternate Amphenol Part Number   | Last Time Buy Date (old part) | Last Time Ship Date (old part) | Comments re Alternate (footprint layout differences, HW/SW changes) |
|----------------------|--------------------------|---|-------------------------------|--------------------------------|---|
|                      | MDB-A26PE-860            | MDRB-A26PE-861 (with tin plated shell) or MDBR-A26PE-AN0 (with nickel plated shell) | Consult with Amphenol         | Consult with Amphenol          | 2nd Generation Design, no pcb footprint or other functional changes |
|                      | MDB-E09PE-860            | MDBR-E09PE-860 or MDBR-E09PE-AN0 (new std part no.)                                 |                               |                                |   |
|                      | MDB-E09SE-860            | MDBR-E09SE-860 or MDBR-E09SE-AN0 (new std part no.)                                 |                               |                                |   |
|                      | MDB-E09SM-860            | MDBR-E09SM-860 or MDBR-E09SM-AN0 (new std part no.)                                 |                               |                                | 2nd Generation Design, no functional design changes.                |
|                      | MDB-A26PE-862            | No alternate, old part was a temporary design                                       | N/A                           | N/A                            |   |
|                      | MDB-E09PE-862            |   |                               |                                |   |
|                      | MDB-B25SE-765            | No alternate  | N/A                           | N/A                            |   |
|                      | MDB-E09PE-766            | No alternate  |                               |                                |   |
|                      | MDB-E09PA-760            | MDB-E09PE-760   | Sep9/22                       | Nov9/22                        | Old and alternate part number designs are identical                 |
|                      | MDB-E09PA-765            | MDB-E09PE-765   |                               |                                |   |
|                      | MDB-E09SA-760            | MDB-E09SE-760   |                               |                                |   |

## List of Supplementary Drawings re DN-C1034

| DN-C1034 Pdf<br>Page Numbers | Drawing Number   | For Part Number |
|------------------------------|------------------|-----------------|
| 3, 4                         | P-MDB-A26PE-860  | MDB-A26PE-860   |
| 5                            | P-MDBR-A26PE-861 | MDBR-A26PE-861  |
| 6                            | P-MDBR-A26PE-XXX | MDBR-A26PE-AN0  |
| 7, 8                         | P-MDB-E09PE-860  | MDB-E09PE-860   |
| 9                            | P-MDBR-E09PE-860 | MDBR-E09PE-860  |
| 10                           | P-MDBR-E09PE-XXX | MDBR-E09PE-AN0  |
| 11, 12                       | P-MDB-E09SE-860  | MDB-E09SE-860   |
| 13                           | P-MDBR-E09SE-860 | MDBR-E09SE-860  |
| 14                           | P-MDBR-E09SE-XXX | MDBR-E09SE-AN0  |
| 15                           | P-MDB-E09SM-860  | MDB-E09SM-860   |
| 16                           | P-MDBR-E09SM-860 | MDBR-E09SM-860  |
| 17                           | P-MDBR-E09SM-XXX | MDBR-E09SM-AN0  |
| 18, 19                       | P-MDB-E09PA-76X  | MDB-E09PA-760   |
|                              |                  | MDB-E09PA-765   |
| 20, 21                       | P-MDB-E09PE-76X  | MDB-E09PE-760   |
|                              |                  | MDB-E09PE-765   |
| 22, 23                       | P-MDB-E09SA-76X  | MDB-E09SA-760   |
| 24, 25                       | P-MDB-E09SE-76X  | MDB-E09SE-760   |

| REVISIONS |                             |          |       |
|-----------|-----------------------------|----------|-------|
| REV       | DESCRIPTION, ECN, EAR NO.   | DATE     | APP'D |
| G         | PRODUCT DRAWING (EAR 13547) | JUN11/09 | K.L.  |
| H         | PRODUCT DRAWING (EAR 14929) | MAR8/21  | K.L.  |



**NOTES:**

- MATERIAL:
  - SHELL: ZINC ALLOY 1.27µm (50µ") MINIMUM NICKEL PLATING.
  - CONTACTS: COPPER ALLOY 0.76µm (30µ") GOLD OVER 1.27µm (50µ") NICKEL PLATING.
  - INSULATOR: THERMOPLASTIC POLYESTER RESIN (DSM) 94V-0 FLAMMABILITY RATING.
  - GASKETS: SILICONE RUBBER S7001R, 70 DUROMETER.
  - SEALING COMPOUND: STYCAST 2651 WITH CATALYST
- FEATURES: SEALED CONNECTOR IN THE MATED AND UNMATED CONDITIONS.
- OPERATING TEMPERATURE: -40°C TO +105°C.
- ENVIRONMENT PERFORMANCE: IP67.
- PART IS RoHS COMPLIANT.
- REAR SEAL TO WITHSTAND TEMPERATURE EXPOSURE OF SOLDER BATH 265°C FOR 8 SEC & SOLDER PREHEAT 150°C FOR 180 SEC.
- SEALED TO WITHSTAND PRESSURE UP TO 5 PSI AFTER HIGH TEMPERATURE EXPOSURE.
- RECOMMENDED TORQUE FOR SCREW TIGHTENING:
  - STEEL SCREW WITH MORE THAN .090" OF THREAD ENGAGEMENT: 4.0 TO 5.75 IN-LBS.
  - BRASS SCREW: 3.1 TO 4.5 IN-LBS.



Old drawing

AMPHENOL PART NUMBER: MDB-A26PE-860

|                            |                        |           |          |
|----------------------------|------------------------|-----------|----------|
| UNLESS SPECIFIED OTHERWISE | DRAWN                  | Y.KUZYK   | JUL24/06 |
| PRIMARY UNITS MILLIMETERS  | CHECKED                |           |          |
| SECONDARY INCHES           | M.E. APP'D             |           |          |
| REFERENCE IN PARENTHESES   | Q.A. APP'D             |           |          |
| GENERAL TOLERANCES         | DWG APPR.              | S.SEMENOV | JUL24/06 |
| 1 DECIMAL PLACE ±0.25      | ENG. REL. NO.          |           |          |
| 2 DECIMAL PLACES ±0.10     | REF.                   |           |          |
| 3 DECIMAL PLACES           | THIRD ANGLE PROJECTION |           |          |
| ANGULAR DEGREES ±1°        | DO NOT SCALE DRAWING   |           |          |

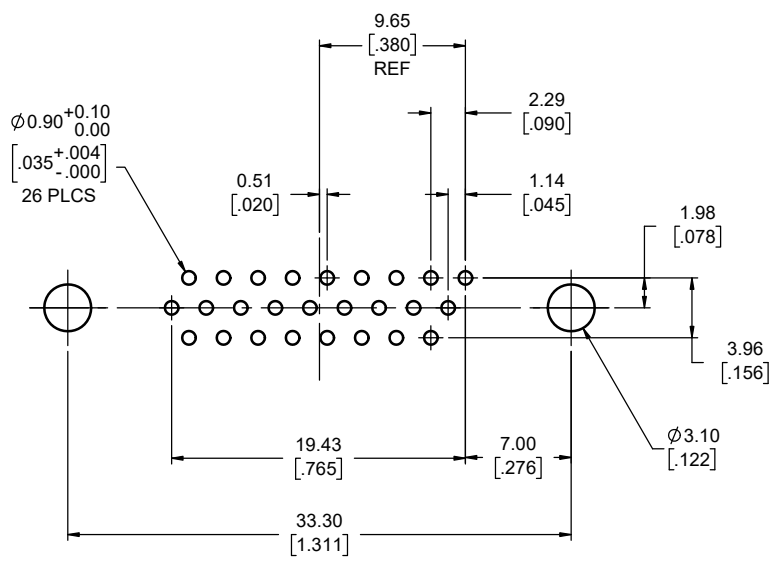
**Amphenol Canada Corp.**  
Commercial Products

MDB SERIES RUGGED D-SUB CONNECTOR, 26 SIZE HIGH DENSITY PIN, VERTICAL PCB TAIL, ROHS COMPLIANT

DWG. NO. **P-MDB-A26PE-860** REV **H**

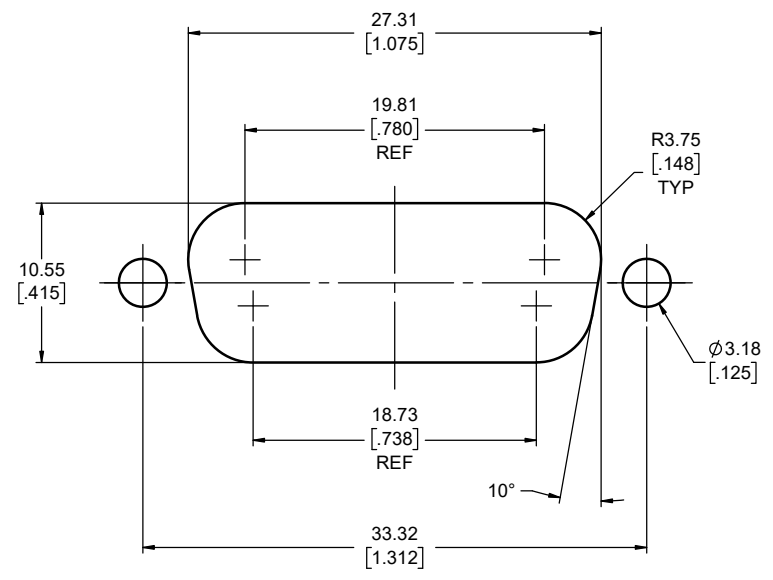
CODE ID NO. 03554 | DWG SIZE: X | SCALE: 3:1 | SHEET 1 OF 2

| REVISIONS |                                |          |       |
|-----------|--------------------------------|----------|-------|
| REV       | DESCRIPTION, ECN, EAR NO.      | DATE     | APP'D |
| G         | PRODUCTION DRAWING (EAR 13547) | JUN11/09 | K.L.  |
| H         | PRODUCTION DRAWING (EAR 14929) | MAR8/21  | K.L.  |



**RECOMMENDED PCB LAYOUT**  
COMPONENT SIDE OF BOARD

LOCATE HOLES  
 $\varnothing 0.13$  [.005] DIA.  
 POSITION DIMENSIONS  
 ARE BASIC



**RECOMMENDED PANEL CUTOUT**  
VIEW TOLERANCE  $\pm 0.15$  (.006)

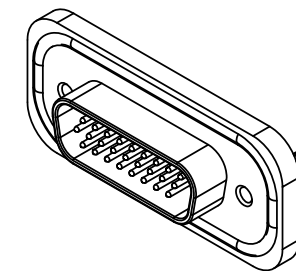
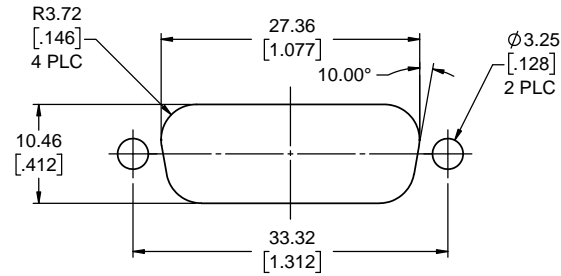
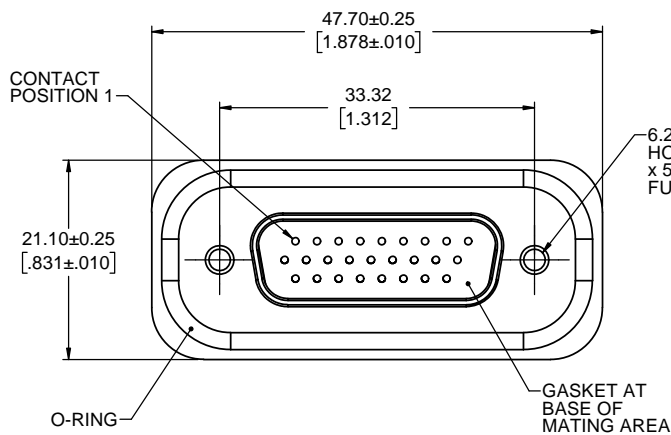
Old drawing



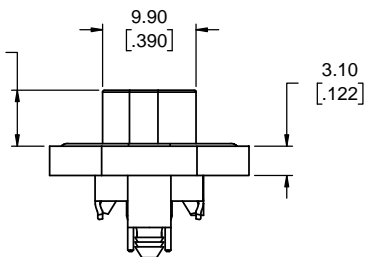
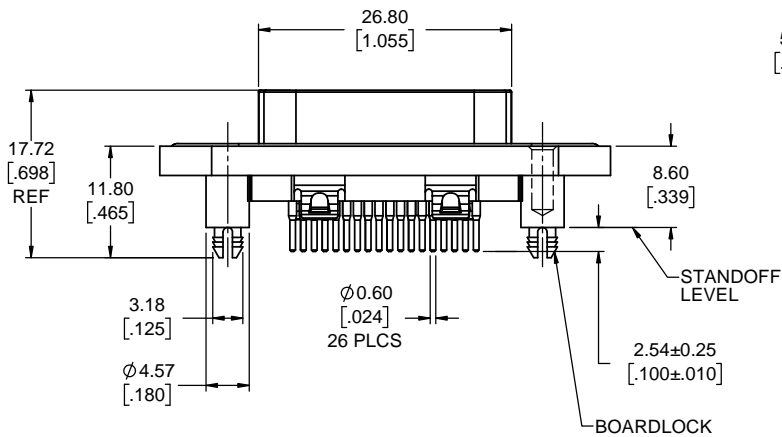
|                               |                        |           |          |
|-------------------------------|------------------------|-----------|----------|
| UNLESS SPECIFIED OTHERWISE    | DRAWN                  | Y.KUZYK   | JUL24/06 |
| PRIMARY UNITS MILLIMETERS     | CHECKED                |           |          |
| SECONDARY INCHES              | M.E. APP'D             |           |          |
| REFERENCE IN PARENTHESES      | Q.A. APP'D             |           |          |
| GENERAL TOLERANCES            | DWG APPR.              | S.SEMENOV | JUL24/06 |
| 1 DECIMAL PLACE $\pm 0.25$    | ENG. REL. NO.          |           |          |
| 2 DECIMAL PLACES $\pm 0.10$   | REF.                   |           |          |
| 3 DECIMAL PLACES              | THIRD ANGLE PROJECTION |           |          |
| ANGULAR DEGREES $\pm 1^\circ$ | DO NOT SCALE DRAWING   |           |          |

|  |                 |            |              |
|--|-----------------|------------|--------------|
| <b>Amphenol Canada Corp.</b><br>Commercial Products  |                 |            |              |
| MDB SERIES RUGGED D-SUB CONNECTOR, 26 SIZE HIGH DENSITY PIN, VERTICAL PCB TAIL, ROHS COMPLIANT |                 |            |              |
| DWG. NO.   | P-MDB-A26PE-860 |            | REV H        |
| CODE ID NO. 03554  | DWG SIZE: X     | SCALE: 4:1 | SHEET 2 OF 2 |

THIS DOCUMENT CONTAINS PROPRIETARY INFORMATION AND SUCH INFORMATION MAY NOT BE DISCLOSED TO OTHERS FOR ANY PURPOSE OR USED FOR MANUFACTURING PURPOSES WITHOUT WRITTEN PERMISSION FROM AMPHENOL CANADA CORP.



**RECOMMENDED PANEL CUTOUT**



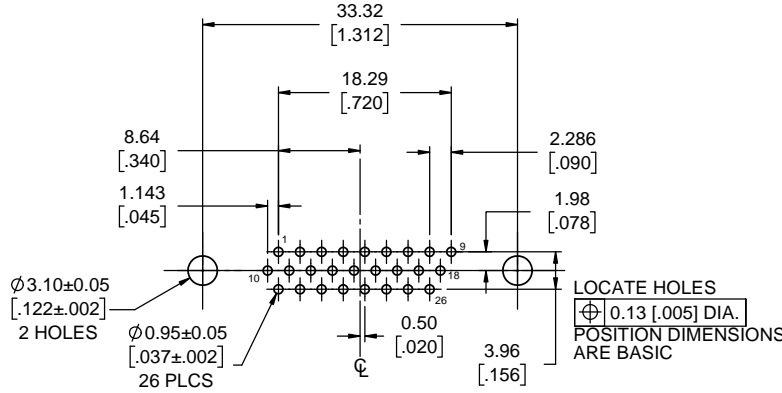
**ORDERING CODE: M D B R - A 2 6 P E - 8 6 1**

SERIES, RUGGED D-SUB  
 SIZE A SHELL, 26 CONTACTS HIGH DENSITY  
 CONNECTOR TYPE (P = PIN)  
 TERMINATION TYPE (E = PCB TAIL)

**VARIATION CODE**  
 861 = #4-40 THREADED STANDOFF WITH BOARDLOCK, WIDE FLANGE DIECAST SHELL WITH O-RING FACE SEAL, OVER-MOULDED CONTACT CONSTRUCTION & MATTE TIN PLATED SHELL.

**NOTES:**

- ALL MATERIALS ARE RoHS COMPLIANT PER EU DIRECTIVE 2011/65/EU AND AMENDMENTS  
 SHELL: DIECAST ZINC ALLOY, MATTE TIN OVER NICKEL  
 CONTACTS: COPPER ALLOY WITH 0.76µm [30µ"] MIN GOLD OVER 1.27µm [50µ"] MIN NICKEL PLATING  
 INSULATOR: HIGH TEMPERATURE RESISTANT THERMOPLASTIC, FLAMMABILITY RATING UL94V-0, BLACK  
 GASKET: SILICONE RUBBER, BLACK  
 O-RING: SILICONE RUBBER, RED
- ENVIRONMENTAL PERFORMANCE PER IEC 60529 CODE IP67 FOR SEAL BETWEEN MATING AREA AND PCB SIDE OF CONNECTOR. O-RING PROVIDES SEAL TO INSIDE FACE OF THE PANEL.
- ELECTRICAL CHARACTERISTICS:  
 CURRENT RATING: 3 AMPS  
 DWV: 1500V DC AT SEA LEVEL
- OPERATING TEMPERATURE: -40°C TO +105°C
- CONNECTOR SEAL TO WITHSTAND TEMPERATURE EXPOSURE OF 150 °C FOR 180 SECONDS (SOLDER PREHEAT) FOLLOWED BY 265 °C FOR 8 SECONDS (SOLDER BATH). AFTER TEMPERATURE EXPOSURE, CONNECTOR SEAL TO WITHSTAND 34 kPa (5 PSI) PRESSURE.
- RECOMMENDED TORQUE FOR SCREW TIGHTENING (WITH MORE THAN 2.3mm (.090") THREAD ENGAGEMENT):  
 STEEL SCREWS - 0.45 TO 0.65 N-m (4 TO 5.75 IN-LBS)  
 BRASS SCREWS - 0.35 TO 0.5 N-m (3.1 TO 4.5 IN-LBS)
- CONSULT WITH AMPHENOL CANADA REGARDING HEX JACK SOCKETS, DUST COVERS OR OTHER ACCESSORIES.



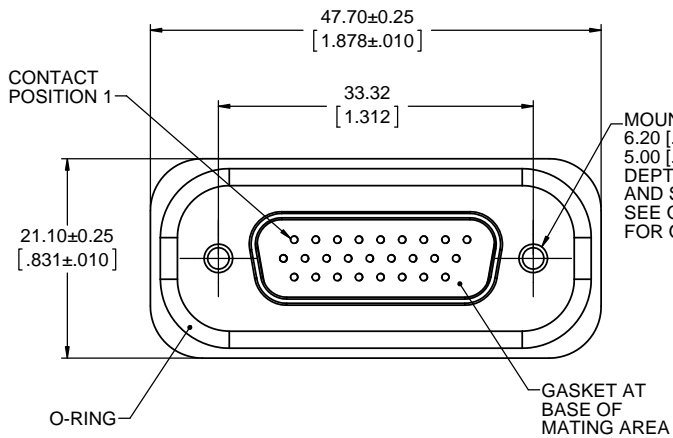
**RECOMMENDED P.C.B. LAYOUT**  
(COMPONENT SIDE OF BOARD)

**Alternate for MDB-A26PE-860**



|                            |                        |           |          |
|----------------------------|------------------------|-----------|----------|
| UNLESS SPECIFIED OTHERWISE | DRAWN                  | J.KONG    | AUG20/18 |
| PRIMARY UNITS MILLIMETERS  | CHECKED                |           |          |
| SECONDARY UNITS INCHES     | M.E. APP'D             |           |          |
| REFERENCE IN PARENTHESES   | Q.A. APP'D             |           |          |
| GENERAL TOLERANCES         | DWG APPR.              | K.LAMBIE  | AUG21/18 |
| 1 DECIMAL PLACE            | ENG. REL. NO.          | EAR 14687 |          |
| 2 DECIMAL PLACES ±0.15     | REF.                   |           |          |
| 3 DECIMAL PLACES           | THIRD ANGLE PROJECTION |           |          |
| ANGULAR DEGREES            | DO NOT SCALE DRAWING   |           |          |

|  |                  |            |              |
|--|------------------|------------|--------------|
| <b>Amphenol Canada Corp.</b><br>Commercial Products  |                  |            |              |
| MDBR SERIES RUGGED D-SUB CONNECTOR, 26 POSITION HIGH DENSITY PIN, VERTICAL PCB TAILS, RoHS COMPLIANT |                  |            |              |
| DWG. NO.   | P-MDBR-A26PE-861 |            | REV A        |
| CODE ID NO. 03554  | DWG SIZE: X      | SCALE: 5:2 | SHEET 1 OF 1 |



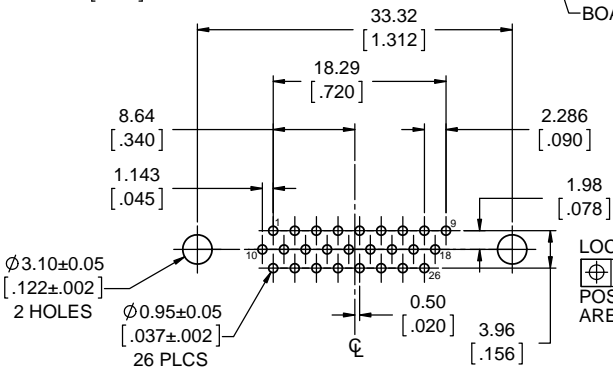
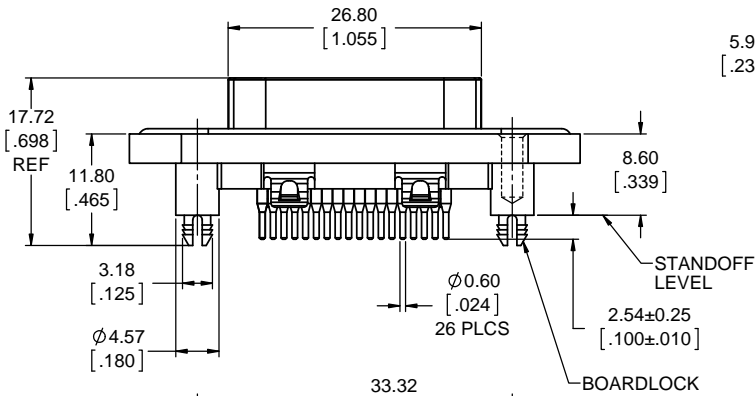
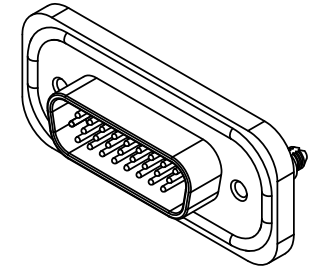
MOUNTING STYLES A OR J  
6.20 [.244] DEEP BLIND HOLE,  
5.00 [.197] MIN FULL THREAD  
DEPTH WITH BOARDLOCK  
AND STANDOFF  
SEE ORDERING CODE  
FOR OPTIONS

**ORDERING CODE: M D B R - A 2 6 P E - X N 0**

SERIES, RUGGED D-SUB  
SIZE A SHELL, 26 CONTACTS HIGH DENSITY  
CONNECTOR TYPE (P = PIN)  
TERMINATION TYPE (E = PCB TAIL)  
MOUNTING STYLE  
2 = 3.05 [.120] DIA HOLE THROUGH FLANGE  
4 = #4-40 THREAD THROUGH FLANGE  
5 = #4-40 THREAD THROUGH STANDOFF  
6 = M3x0.5 THREAD THROUGH FLANGE  
A = #4-40 THREADED STANDOFF WITH BOARDLOCK  
J = M3x0.5 THREADED STANDOFF WITH BOARDLOCK  
K = 3.05 [.120] DIA HOLE THROUGH STANDOFF

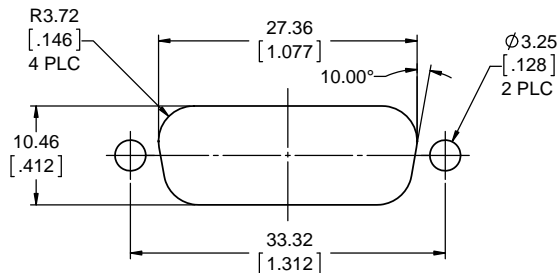
FEATURES AND MODIFIER CODES (N0 = STANDARD)

| REVISIONS |                             |          |       |
|-----------|-----------------------------|----------|-------|
| REV       | DESCRIPTION, ECN, EAR NO.   | DATE     | APP'D |
| A         | PRODUCT DRAWING (EAR 13901) | AUG08/11 | K.L.  |

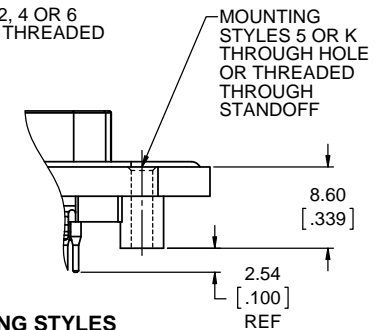
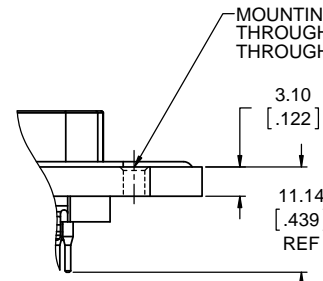
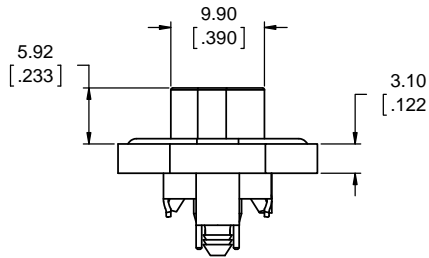


**RECOMMENDED P.C.B. LAYOUT**  
(COMPONENT SIDE OF BOARD)

LOCATE HOLES  
±0.13 [.005] DIA.  
POSITION DIMENSIONS ARE BASIC



**RECOMMENDED PANEL CUTOUT**



**ADDITIONAL MOUNTING STYLES**  
(SEE ORDERING CODE)

**NOTES:**

- ALL MATERIALS ARE RoHS COMPLIANT PER EU DIRECTIVE 2002/95/EC AND AMENDMENTS  
SHELL: DIECAST ZINC ALLOY, NICKEL PLATED  
CONTACTS: COPPER ALLOY WITH 0.76µm [30µ"] MIN GOLD OVER 1.27µm [50µ"] MIN NICKEL PLATING  
INSULATOR: HIGH TEMPERATURE RESISTANT THERMOPLASTIC, FLAMMABILITY RATING UL94V-0, BLACK  
GASKET: SILICONE RUBBER, BLACK  
O-RING: SILICONE RUBBER, RED
- ENVIRONMENTAL PERFORMANCE PER IEC 60529 CODE IP67 FOR SEAL BETWEEN MATING AREA AND PCB SIDE OF CONNECTOR. O-RING PROVIDES SEAL TO INSIDE FACE OF THE PANEL.
- ELECTRICAL CHARACTERISTICS:  
CURRENT RATING: 3 AMPS  
DWV: 1500V DC AT SEA LEVEL
- OPERATING TEMPERATURE: -40°C TO +105°C
- WHEN THROUGH HOLE OR THREADED THROUGH MOUNTING STYLES ARE USED, CUSTOMER TO PROVIDE METHOD FOR SEALING MOUNTING HOLES.
- CONSULT WITH AMPHENOL CANADA REGARDING HEX JACK SOCKETS, DUST COVERS OR OTHER ACCESSORIES.

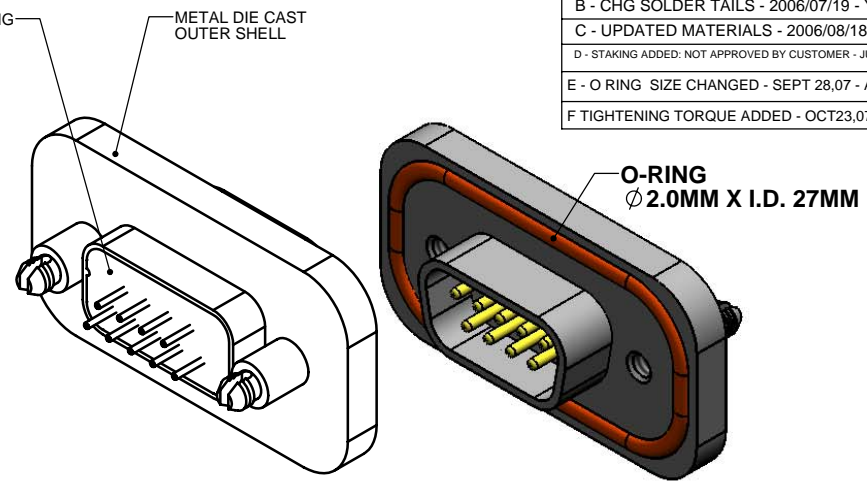
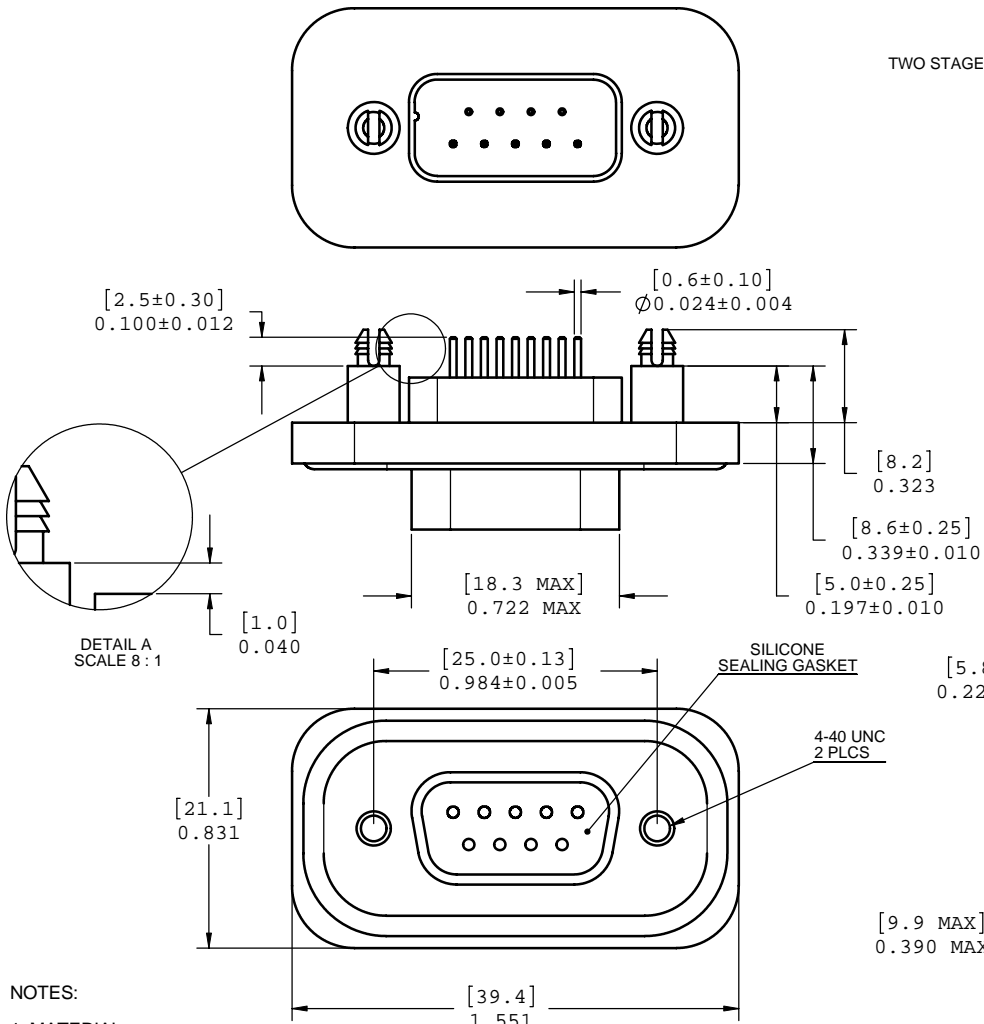
**MDBR-A26PE-AN0 is an alternate for MDB-A269PE-860**



|                            |                        |           |          |
|----------------------------|------------------------|-----------|----------|
| UNLESS SPECIFIED OTHERWISE | DRAWN                  | M.SHAH    | JUL18/11 |
| PRIMARY UNITS MILLIMETERS  | CHECKED                |           |          |
| SECONDARY INCHES           | M.E. APP'D             |           |          |
| REFERENCE IN PARENTHESES   | Q.A. APP'D             |           |          |
| GENERAL TOLERANCES         | DWG APPR.              | K.LAMBIE  | AUG08/11 |
| 1 DECIMAL PLACE            | ENG. REL. NO.          | EAR 13901 |          |
| 2 DECIMAL PLACES ±0.15     | REF.                   |           |          |
| 3 DECIMAL PLACES           | THIRD ANGLE PROJECTION |           |          |
| ANGULAR DEGREES            | DO NOT SCALE DRAWING   |           |          |

|  |                  |            |              |
|--|------------------|------------|--------------|
| <b>Amphenol Canada Corp.</b><br>www.amphenolcanada.com   |                  |            |              |
| MDBR SERIES RUGGED D-SUB CONNECTOR, 26 POSITION HIGH DENSITY PIN, VERTICAL PCB TAILS, RoHS COMPLIANT |                  |            |              |
| DWG. NO.   | P-MDBR-A26PE-XXX |            | REV A        |
| CODE ID NO. 03554  | DWG SIZE: X      | SCALE: 5:2 | SHEET 1 OF 1 |

|  |
|--|
| REV - DESCRIPT - DATE - APPRVD                           |
| A - UPDATED NOTES - 2006/06/16 - YK.                     |
| B - CHG SOLDER TAILS - 2006/07/19 - YK.                  |
| C - UPDATED MATERIALS - 2006/08/18 - YK.                 |
| D - STAKING ADDED: NOT APPROVED BY CUSTOMER - JUNE 16,07 |
| E - O RING SIZE CHANGED - SEPT 28,07 - A.G.              |
| F TIGHTENING TORQUE ADDED - OCT23,07-A.G.                |



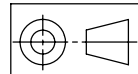
- NOTES:
- MATERIAL:
    - SHELL: ZINC ALLOY 50 MICRO INCH MINIMUM NICKEL PLATING.
    - CONTACTS: COPPER ALLOY 30 MICRO INCH GOLD OVER 50 MICRO INCH NICKEL PLATING.
    - INSULATOR: THERMOPLASTIC POLYESTER RESIN (DSM) 94V-0 FLAMMABILITY RATING.
    - GASKETS: SILICONE RUBBER S7001R, 70 DUROMETER.
    - SEALING COMPOUND: STYCAST 2651 WITH CATALYST 11
  - FEATURES: SEALED CONNECTOR IN THE MATED AND UNMATED CONDITIONS.
  - OPERATING TEMPERATURE: -40°C TO +105°C.
  - ENVIRONMENT PERFORMANCE: IP67.
  - PART IS RoHS COMPLIANT.
  - REAR SEAL TO WITHSTAND TEMPERATURE EXPOSURE OF SOLDER BATH 265°C FOR 8 SEC & SOLDER PREHEAT 150°C FOR 180.
  - SEALED TO WITH PRESSURE UP TO 5 PSI AFTER HIGH TEMPERATURE EXPOSURE.
  - RECOMMENDED TORQUE FOR SCREW TIGHTENING:
    - STEEL SCREW WITH MORE THAN.090" OF THREAD ENGAGEMENT: 4.0 TO 5.75 IN-LBS
    - BRASS SCREW : 3.1 TO 4.5 IN-LBS

AMPHENOL PART NUMBER: MDB-E09PE-860

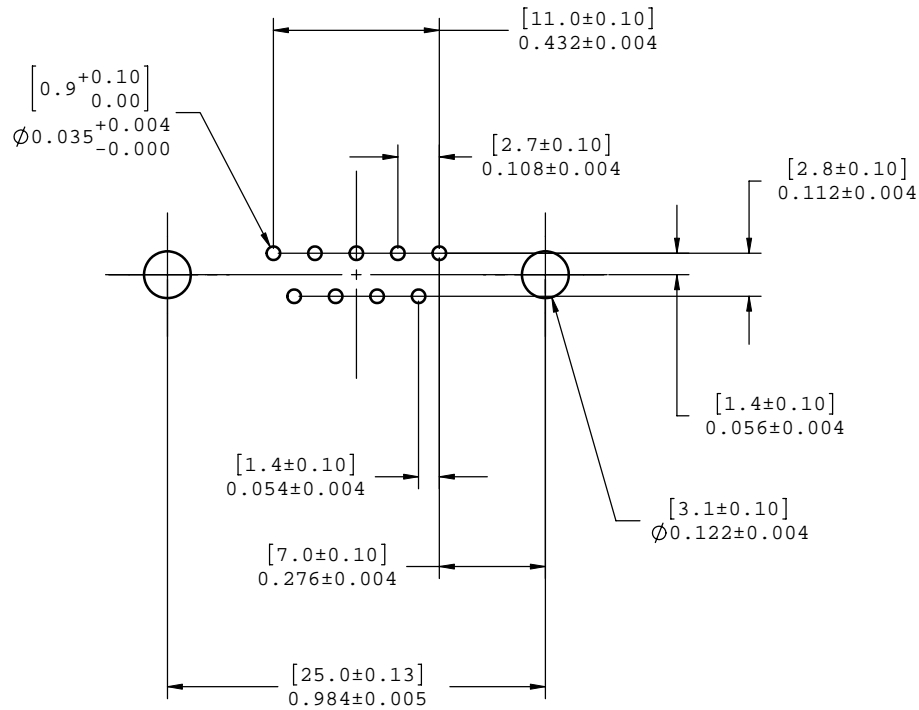
Old drawing



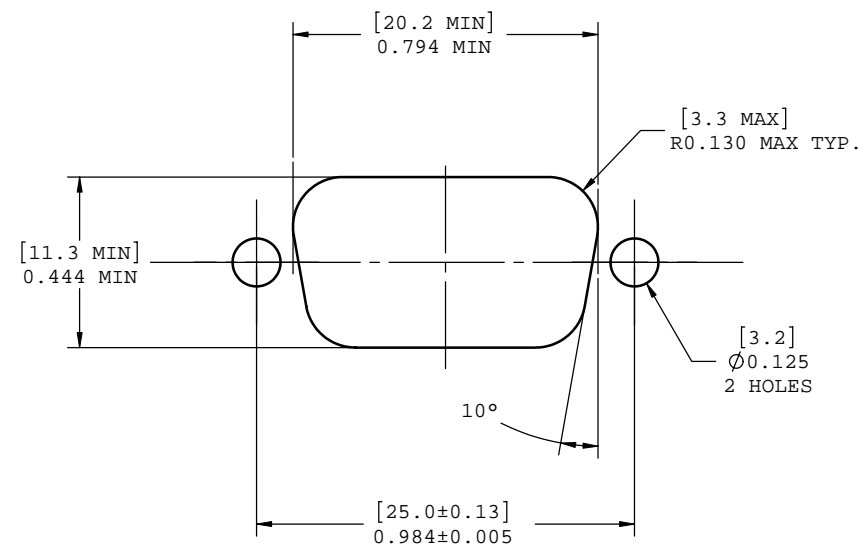
|  |                    |            |                           |                          |              |
|--|--------------------|------------|---------------------------|--------------------------|--------------|
| UNLESS OTHERWISE SPECIFIED DIMENSIONS ARE IN MILLIMETER TOLERANCES ARE:<br>DECIMALS .XX ±.10 .X ±.25<br>ANGLES ±1° | APPROVALS          | DATE       | Amphenol Canada Corp.     |                          |              |
|  | DRAWN Y.KUZYK      | 2006/07/24 |                           |                          |              |
| MATERIAL AND FINISH  | DESIGNED S.SEMENOV | 2006/07/24 | TITLE<br>09 PIN CONNECTOR |                          |              |
|  | CHECKED            |            |                           |                          |              |
| REF.   | QA APP'D           |            | SIZE C                    | DWG. NO. P-MDB-E09PE-860 | REV. F       |
|  | IE APP'D           |            | SCALE 3:1                 | PROJECT MDB              | SHEET 1 OF 2 |
| CODE IDENT. NO.  | DWG APP'D          | 2006/07/24 |                           |                          |              |



|                                |
|--------------------------------|
| REV - DESCRIPT - DATE - APPRVD |
|                                |
|                                |
|                                |



PCB LAYOUT



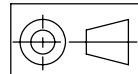
EXISTING PANEL CUTOUT

Old drawing



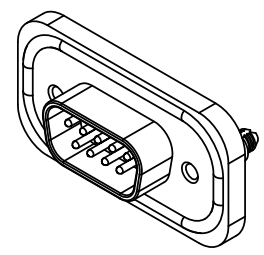
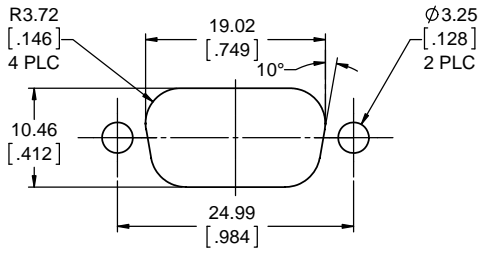
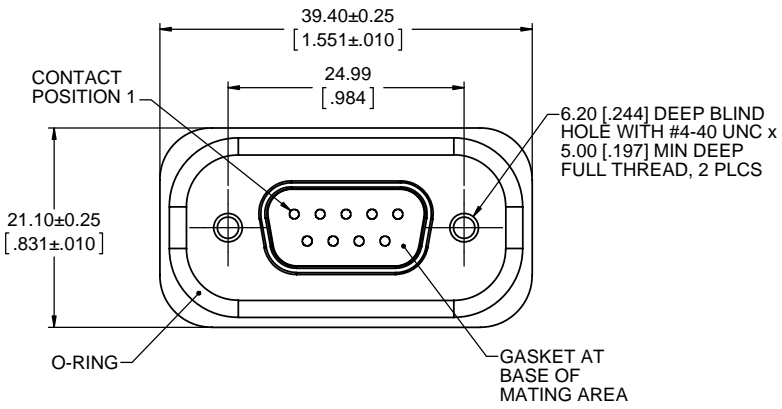
|   |  |                       |            |                               |                 |        |
|---|--|-----------------------|------------|-------------------------------|-----------------|--------|
| UNLESS OTHERWISE SPECIFIED DIMENSIONS ARE IN MILLIMETER TOLERANCES ARE:<br><br>DECIMALS                      ANGLES<br>.XX ±.10                            ± 1°<br>.X    ±.25 |  | APPROVALS             | DATE       | <b>Amphenol Canada Corp.</b>  |                 |        |
|   |  | DRAWN<br>Y.KUZYK      | 2006/07/24 |                               |                 |        |
| MATERIAL AND FINISH   |  | DESIGNED<br>S.SEMENOV | 2006/07/24 | TITLE<br><br>09 PIN CONNECTOR |                 |        |
|   |  | CHECKED               |            |                               |                 |        |
| REF.  |  | QA APP'D              |            | SIZE                          | DWG. NO.        | REV.   |
|   |  | IE APP'D              |            | C                             | P-MDB-E09PE-860 | F      |
| CODE IDENT. NO.   |  | DWG APP'D             | 2006/07/24 | SCALE                         | PROJECT         | SHEET  |
|   |  |                       |            | 4:1                           | MDB             | 2 OF 2 |

DO NOT SCALE DRAWING  
THIS DOCUMENT CONTAINS PROPRIETARY INFORMATION AND SUCH INFORMATION MAY NOT BE DISCLOSED TO OTHERS FOR ANY PURPOSE OR USED FOR MANUFACTURING PURPOSES WITHOUT PERMISSION FROM AMPHENOL CANADA CORP.

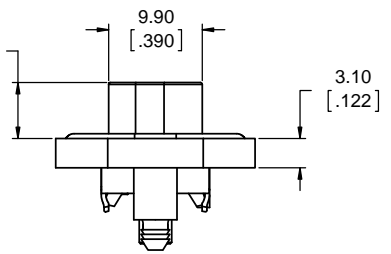
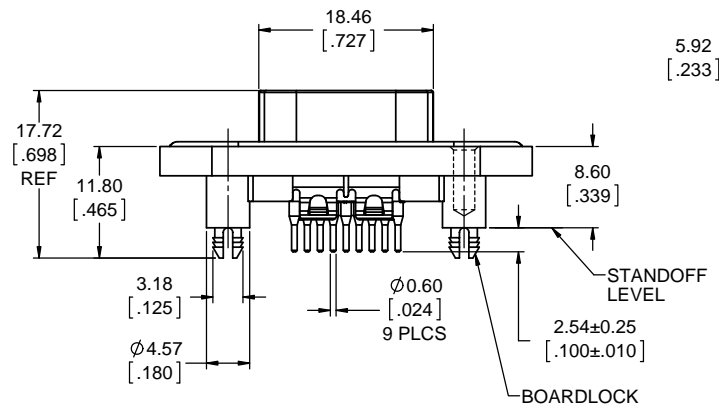




| REVISIONS |                             |          |       |
|-----------|-----------------------------|----------|-------|
| REV       | DESCRIPTION, ECN, EAR NO.   | DATE     | APP'D |
| A         | PRODUCT DRAWING (EAR 13901) | AUG16/11 | K.L.  |



**RECOMMENDED PANEL CUTOUT**

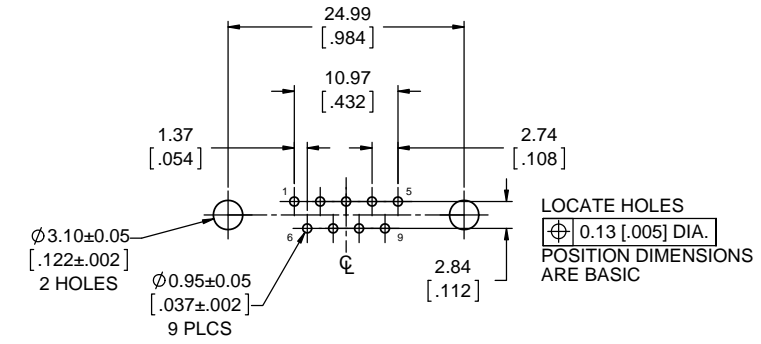


**ORDERING CODE: M D B R - E 0 9 P E - 8 6 0**

SERIES, RUGGED D-SUB  
 SIZE E SHELL, 9 CONTACTS  
 CONNECTOR TYPE (P = PIN)  
 TERMINATION TYPE (E = PCB TAIL)  
 VARIATION CODE  
 860 = #4-40 THREADED STANDOFF WITH BOARDLOCK  
 WIDE FLANGE DIECAST SHELL WITH O-RING FACE SEAL

**NOTES:**

- ALL MATERIALS ARE RoHS COMPLIANT PER EU DIRECTIVE 2002/95/EC AND AMENDMENTS  
 SHELL: DIECAST ZINC ALLOY, NICKEL PLATED  
 CONTACTS: COPPER ALLOY WITH 0.76µm [30µ"] MIN GOLD OVER 1.27µm [50µ"] MIN NICKEL PLATING  
 INSULATOR: HIGH TEMPERATURE RESISTANT THERMOPLASTIC, FLAMMABILITY RATING UL94V-0, BLACK  
 GASKET: SILICONE RUBBER, BLACK  
 O-RING: SILICONE RUBBER, RED
- ENVIRONMENTAL PERFORMANCE PER IEC 60529 CODE IP67 FOR SEAL BETWEEN MATING AREA AND PCB SIDE OF CONNECTOR. O-RING PROVIDES SEAL TO INSIDE FACE OF THE PANEL.
- ELECTRICAL CHARACTERISTICS:  
 CURRENT RATING: 5 AMPS  
 DWV: 1500V DC AT SEA LEVEL
- OPERATING TEMPERATURE: -40°C TO +105°C
- CONNECTOR SEAL TO WITHSTAND TEMPERATURE EXPOSURE OF 150°C FOR 180 SECONDS (SOLDER PREHEAT) FOLLOWED BY 265°C FOR 8 SECONDS (SOLDER BATH). AFTER TEMPERATURE EXPOSURE, CONNECTOR SEAL TO WITHSTAND 34 kPa (5 PSI) PRESSURE.
- RECOMMENDED TORQUE FOR SCREW TIGHTENING (WITH MORE THAN 2.3mm (.090") THREAD ENGAGEMENT):  
 STEEL SCREWS - 0.45 TO 0.65 N-m (4 TO 5.75 IN-LBS)  
 BRASS SCREWS - 0.35 TO 0.50 N-m (3.1 TO 4.5 IN-LBS)
- CONSULT WITH AMPHENOL CANADA REGARDING HEX JACK SOCKETS, DUST COVERS OR OTHER ACCESSORIES.



**RECOMMENDED P.C.B LAYOUT**  
(COMPONENT SIDE OF BOARD)

Alternate for MDB-E09PE-860



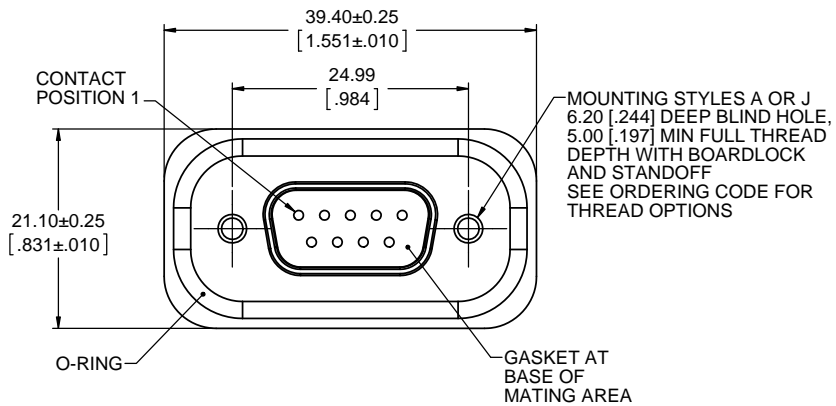
|                            |                        |           |          |
|----------------------------|------------------------|-----------|----------|
| UNLESS SPECIFIED OTHERWISE | DRAWN                  | M.SHAH    | AUG12/11 |
| PRIMARY UNITS MILLIMETERS  | CHECKED                |           |          |
| SECONDARY INCHES           | M.E. APP'D             |           |          |
| REFERENCE IN PARENTHESES   | Q.A. APP'D             |           |          |
| GENERAL TOLERANCES         | DWG APPR.              | K.LAMBIE  | AUG16/11 |
| 1 DECIMAL PLACE            | ENG. REL. NO.          | EAR 13901 |          |
| 2 DECIMAL PLACES ±0.15     | REF.                   |           |          |
| 3 DECIMAL PLACES           | THIRD ANGLE PROJECTION |           |          |
| ANGULAR DEGREES            | DO NOT SCALE DRAWING   |           |          |

**Amphenol Canada Corp.**  
[www.amphenolcanada.com](http://www.amphenolcanada.com)

**MDBR SERIES RUGGED D-SUB CONNECTOR, 9 POSITION PIN, VERTICAL PCB TAILS, RoHS COMPLIANT**

DWG. NO. **P-MDBR-E09PE-860** REV **A**

CODE ID NO. 03554 DWG SIZE: X SCALE: 5:2 SHEET 1 OF 1



**ORDERING CODE: MDBR - E09 PE - X N 0**

SERIES, RUGGED D-SUB \_\_\_\_\_

SIZE E SHELL, 9 CONTACTS \_\_\_\_\_

CONNECTOR TYPE (P = PIN) \_\_\_\_\_

TERMINATION TYPE (E = PCB TAIL) \_\_\_\_\_

MOUNTING STYLE \_\_\_\_\_

2 = 3.05 [.120] DIA HOLE THROUGH FLANGE

4 = #4-40 THREAD THROUGH FLANGE

5 = #4-40 THREAD THROUGH STANDOFF

6 = M3x0.5 THREAD THROUGH FLANGE

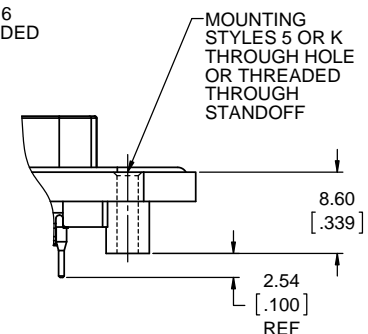
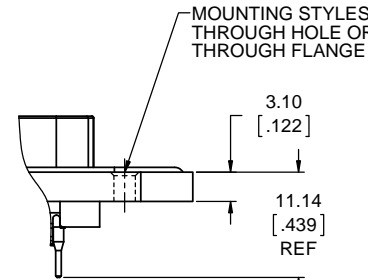
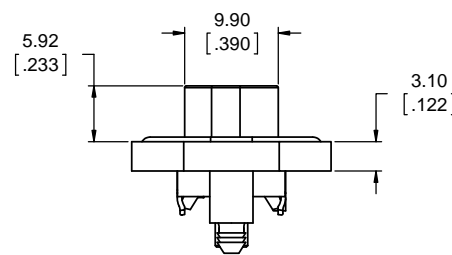
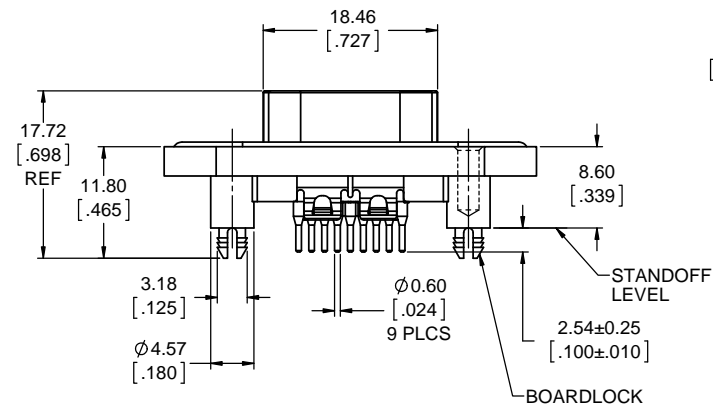
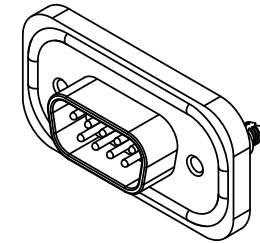
A = #4-40 THREADED STANDOFF WITH BOARDLOCK

J = M3x0.5 THREADED STANDOFF WITH BOARDLOCK

K = 3.05 [.120] DIA HOLE THROUGH STANDOFF

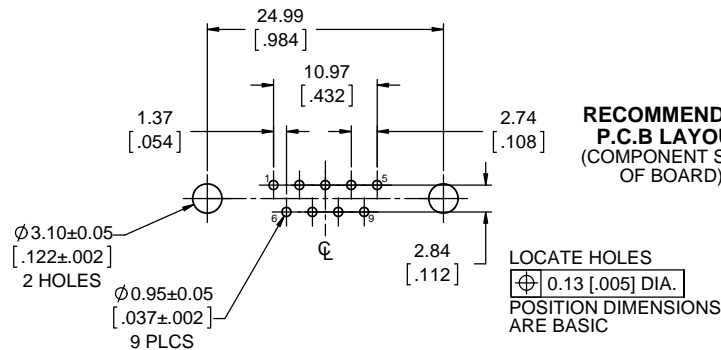
FEATURES AND MODIFIER CODES (N0 = STANDARD)

| REVISIONS |                             |          |       |
|-----------|-----------------------------|----------|-------|
| REV       | DESCRIPTION, ECN, EAR NO.   | DATE     | APP'D |
| A         | PRODUCT DRAWING (EAR 13901) | AUG08/11 | K.L.  |



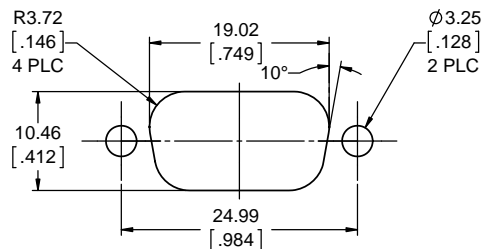
**ADDITIONAL MOUNTING STYLES**  
(SEE ORDERING CODE)

**RECOMMENDED P.C.B LAYOUT**  
(COMPONENT SIDE OF BOARD)



LOCATE HOLES  
 $\varnothing 0.13$  [.005] DIA.  
 POSITION DIMENSIONS ARE BASIC

**RECOMMENDED PANEL CUTOUT**



**NOTES:**

- ALL MATERIALS ARE RoHS COMPLIANT PER EU DIRECTIVE 2002/95/EC AND AMENDMENTS  
 SHELL: DIECAST ZINC ALLOY, NICKEL PLATED  
 CONTACTS: COPPER ALLOY WITH 0.76µm [30µ"] MIN GOLD OVER 1.27µm [50µ"] MIN NICKEL PLATING  
 INSULATOR: HIGH TEMPERATURE RESISTANT THERMOPLASTIC, FLAMMABILITY RATING UL94V-0, BLACK  
 GASKET: SILICONE RUBBER, BLACK  
 O-RING: SILICONE RUBBER, RED
- ENVIRONMENTAL PERFORMANCE PER IEC 60529 CODE IP67 FOR SEAL BETWEEN MATING AREA AND PCB SIDE OF CONNECTOR. O-RING PROVIDES SEAL TO INSIDE FACE OF THE PANEL.
- ELECTRICAL CHARACTERISTICS:  
 CURRENT RATING: 5 AMPS  
 DWV: 1500V DC AT SEA LEVEL
- OPERATING TEMPERATURE: -40°C TO +105°C
- WHEN THROUGH HOLE OR THREADED THROUGH MOUNTING STYLES ARE USED, CUSTOMER TO PROVIDE METHOD FOR SEALING MOUNTING HOLES.
- CONSULT WITH AMPHENOL CANADA REGARDING HEX JACK SOCKETS, DUST COVERS OR OTHER ACCESSORIES.

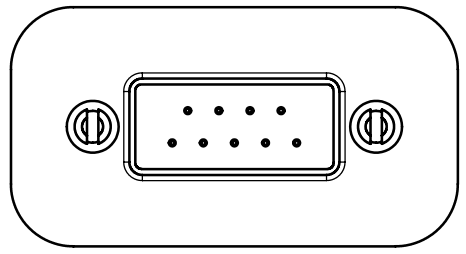
**MDBR-E09PE-AN0 is an alternate for MDB-E09PE-860**



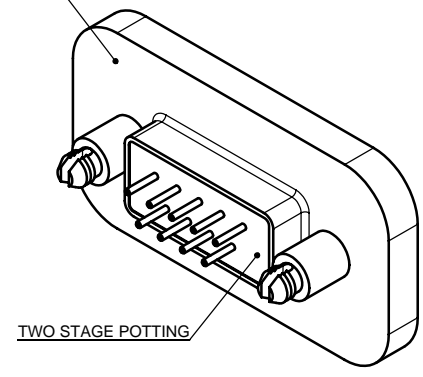
|                            |                        |           |          |
|----------------------------|------------------------|-----------|----------|
| UNLESS SPECIFIED OTHERWISE | DRAWN                  | M.SHAH    | JUL18/11 |
| PRIMARY UNITS MILLIMETERS  | CHECKED                |           |          |
| SECONDARY UNITS INCHES     | M.E. APP'D             |           |          |
| REFERENCE IN PARENTHESES   | Q.A. APP'D             |           |          |
| GENERAL TOLERANCES         | DWG APPR.              | K.LAMBIE  | AUG08/11 |
| 1 DECIMAL PLACE            | ENG. REL. NO.          | EAR 13901 |          |
| 2 DECIMAL PLACES ±0.15     | REF.                   |           |          |
| 3 DECIMAL PLACES           | THIRD ANGLE PROJECTION |           |          |
| ANGULAR DEGREES            | DO NOT SCALE DRAWING   |           |          |

|  |                  |            |              |
|--|------------------|------------|--------------|
| <b>Amphenol Canada Corp.</b><br>www.amphenolcanada.com                                 |                  |            |              |
| MDBR SERIES RUGGED D-SUB CONNECTOR, 9 POSITION PIN, VERTICAL PCB TAILS, RoHS COMPLIANT |                  |            |              |
| DWG. NO.   | P-MDBR-E09PE-XXX |            | REV A        |
| CODE ID NO. 03554  | DWG SIZE: X      | SCALE: 5:2 | SHEET 1 OF 1 |

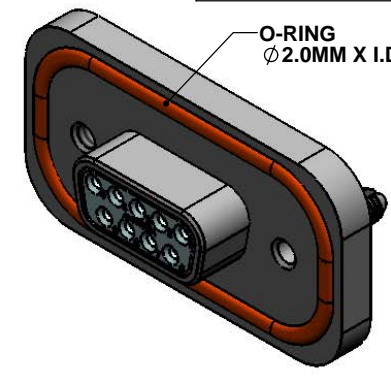
|   |
|---|
| REV - DESCRIPT - DATE - APPRVD                          |
| A - UPDATED NOTES - 2006/06/16 - YK.                    |
| B - CHG SOLDER TAIL - 2006/07/19 - YK.                  |
| C - UPDATED MATERIALS - 2006/08/18 - YK.                |
| D - STAKING ADDED: NOT APPROVED BY CUSTOMER - MAY 23,07 |
| E - O RING SIZE CHANGED - SEPT28,07 - A.G.              |
| F - TIGHTENING TORQUE ADDED - OCT23,07 - A.G.           |



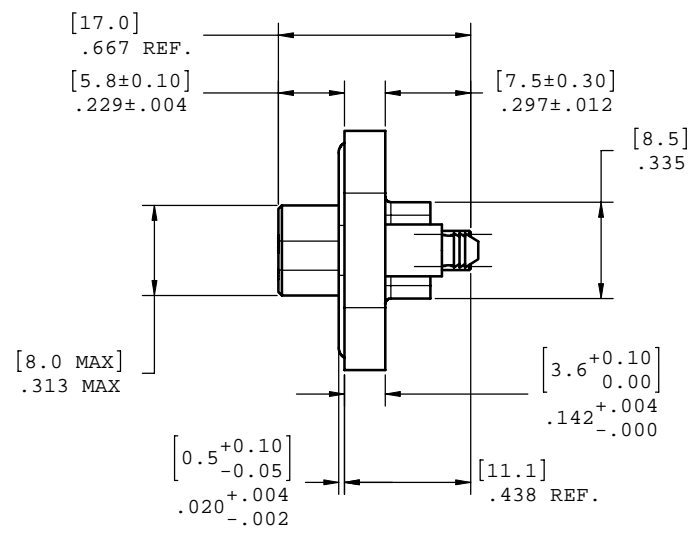
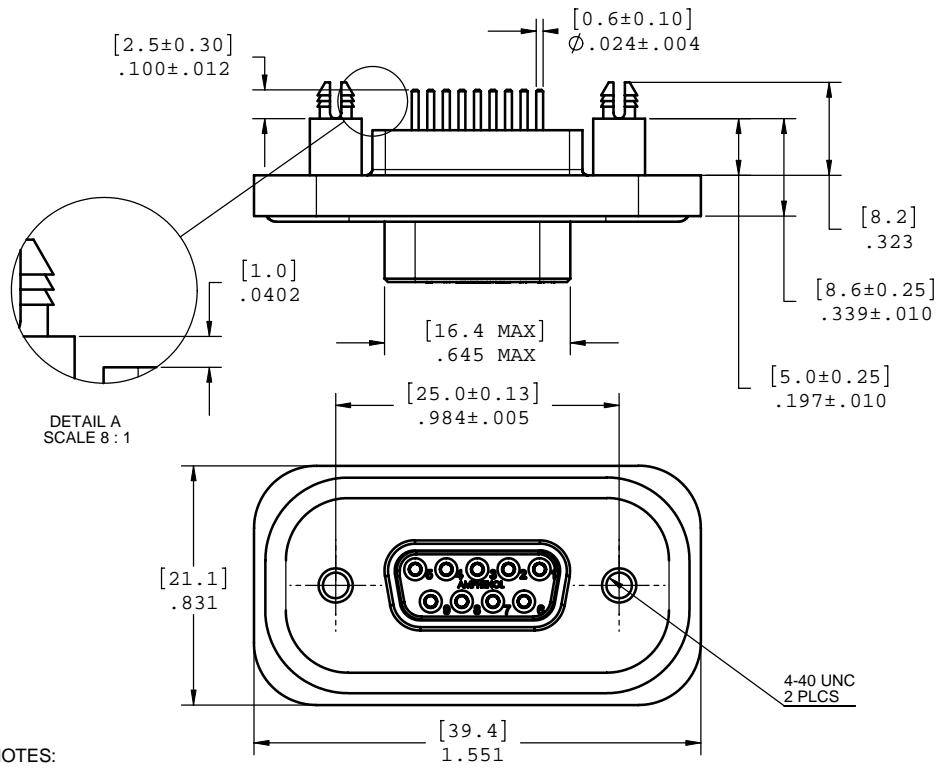
METAL DIE CAST OUTER SHELL



TWO STAGE POTTING



O-RING  
Ø 2.0MM X I.D. 27MM



NOTES:

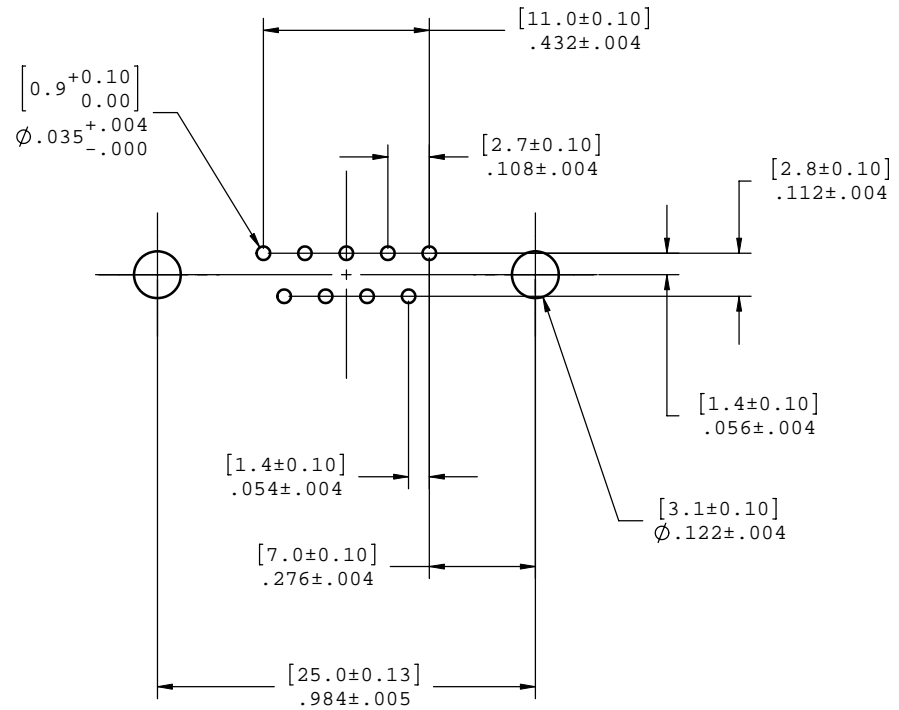
- MATERIAL:
  - SHELL: ZINC ALLOY 50 MICRO INCH MINIMUM NICKEL PLATING.
  - CONTACTS: COPPER ALLOY 30 MICRO INCH GOLD OVER 50 MICRO INCH NICKEL PLATING.
  - INSULATOR: THERMOPLASTIC POLYESTER RESIN (DSM) 94V-0 FLAMMABILITY RATING.
  - GASKETS: SILICONE RUBBER S7001R, 70 DUROMETER.
  - SEALING COMPOUND: STYCAST 2651 WITH CATALYST 11
- FEATURES: SEALED CONNECTOR IN THE MATED AND UNMATED CONDITIONS.
- OPERATING TEMPERATURE: -40°C TO +105°C.
- ENVIRONMENT PERFORMANCE: IP67.
- PART IS RoHS COMPLIANT.
- REAR SEAL TO WITHSTAND TEMPERATURE EXPOSURE OF SOLDER BATH 265°C FOR 8 SEC & SOLDER PREHEAT 150°C FOR 180 SEC.
- SEALED TO WITHSTAND PRESSURE UP TO 5 PSI AFTER HIGH TEMPERATURE EXPOSURE.
- RECOMMENDED TORQUE FOR SCREW TIGHTENING:
  - STEEL SCREW WITH MORE THAN .090" THREAD ENGAGEMENT: 4.0 TO 5.75 INCH-LBS
  - BRASS SCREW: 3.1 TO 4.5 INCH-LBS.

Old drawing

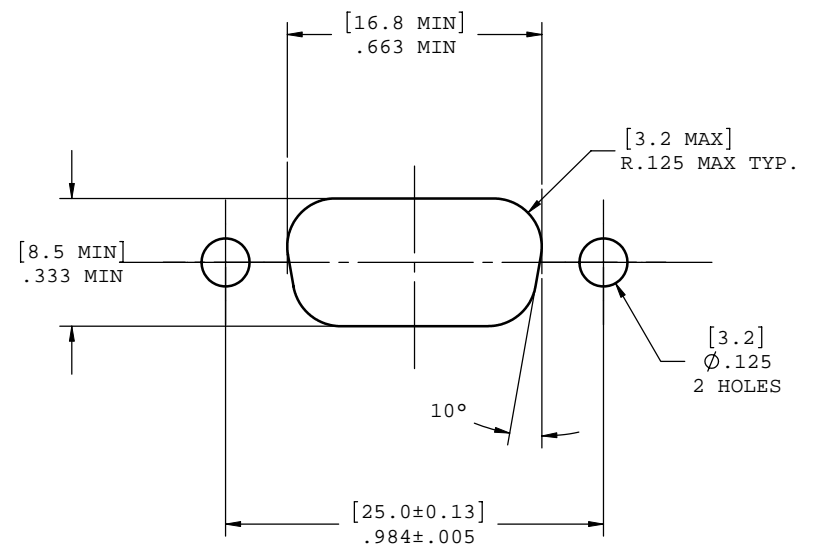
AMPHENOL PART NUMBER: MDB-E09SE-860



|   |        |           |            |                         |                 |
|---|--------|-----------|------------|-------------------------|-----------------|
| UNLESS OTHERWISE SPECIFIED DIMENSIONS ARE IN MILLIMETER TOLERANCES ARE: |        | APPROVALS | DATE       | Amphenol Canada Corp.   |                 |
| DECIMALS  | ANGLES | DRAWN     | 2006/07/24 | TITLE                   |                 |
| .XX ±.10  | ± 1°   | DESIGNED  | 2006/07/24 | MDB 9 SOCKETS CONNECTOR |                 |
| .X ±.25   |        | CHECKED   |            | SIZE                    | DWG. NO.        |
| MATERIAL AND FINISH   |        | QA APP'D  |            | C                       | P-MDB-E09SE-860 |
| REF.  |        | IE APP'D  |            | SCALE                   | PROJECT         |
| CODE IDENT. NO.   |        | DWG APP'D | 2006/07/24 | 3:1                     | MDB             |
|   |        |           |            |                         | SHEET           |
|   |        |           |            |                         | 1 OF 2          |



PCB LAYOUT

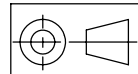


RECOMMENDED PANEL CUTOUT

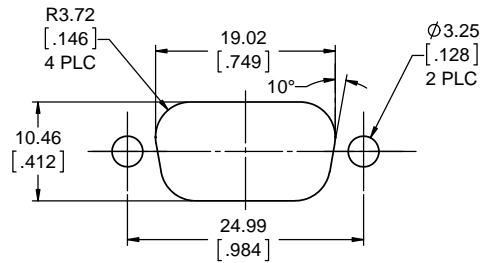
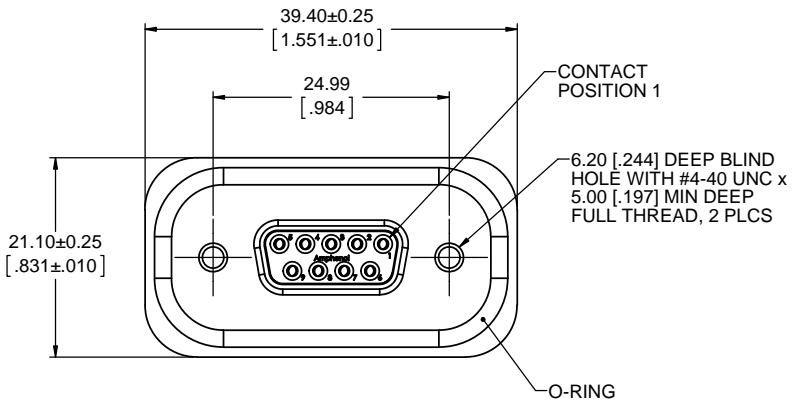
Old drawing



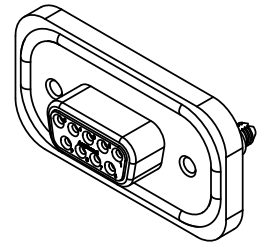
|   |  |                       |            |                                      |                             |
|---|--|-----------------------|------------|--------------------------------------|-----------------------------|
| UNLESS OTHERWISE SPECIFIED DIMENSIONS ARE IN MILLIMETER TOLERANCES ARE:<br><br>DECIMALS                      ANGLES<br>.XX ±.10                            ± 1°<br>.X    ±.25 |  | APPROVALS             | DATE       | <b>Amphenol Canada Corp.</b>         |                             |
|   |  | DRAWN<br>Y.KUZYK      | 2006/07/24 |                                      |                             |
| MATERIAL AND FINISH   |  | DESIGNED<br>S.SEMENOV | 2006/07/24 | TITLE<br><br>MDB 9 SOCKETS CONNECTOR |                             |
|   |  | CHECKED               |            |                                      |                             |
| REF.  |  | QA APP'D              |            | SIZE<br>C                            | DWG. NO.<br>P-MDB-E09SE-860 |
|   |  | IE APP'D              |            | SCALE<br>4:1                         | PROJECT<br>MDB              |
| CODE IDENT. NO.   |  | DWG APP'D             | 2006/07/24 | SHEET<br>2 OF 2                      |                             |



| REVISIONS |                             |          |       |
|-----------|-----------------------------|----------|-------|
| REV       | DESCRIPTION, ECN, EAR NO.   | DATE     | APP'D |
| A         | PRODUCT DRAWING (EAR 13901) | AUG16/11 | K.L.  |

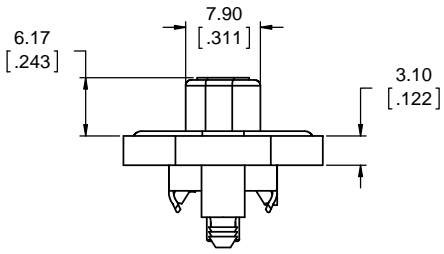
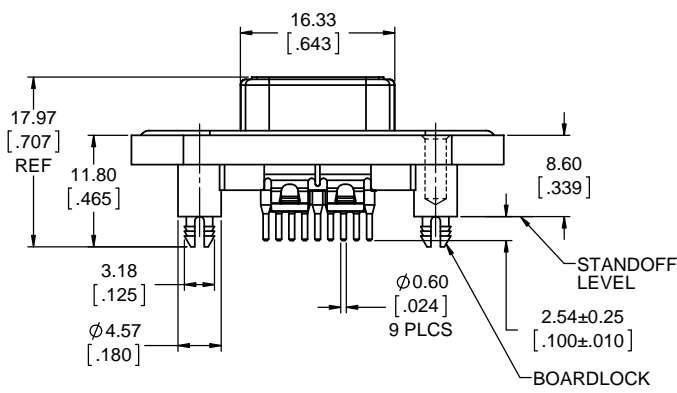


**RECOMMENDED PANEL CUTOUT**  
(INCLUDES CLEARANCE FOR PIN CONNECTOR)



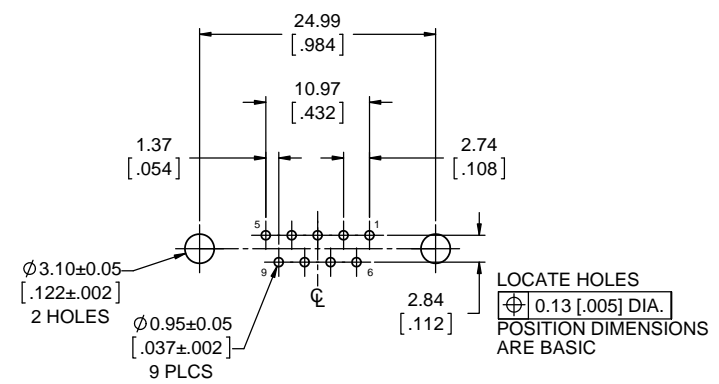
**ORDERING CODE: M D B R - E 0 9 S E - 8 6 0**

SERIES, RUGGED D-SUB \_\_\_\_\_  
 SIZE E SHELL, 9 CONTACTS \_\_\_\_\_  
 CONNECTOR TYPE (S = SOCKET) \_\_\_\_\_  
 TERMINATION TYPE (E = PCB TAIL) \_\_\_\_\_  
 MOUNTING STYLE \_\_\_\_\_  
 860 = #4-40 THREADED STANDOFF WITH BOARDLOCK  
 WIDE FLANGE DIECAST SHELL WITH O-RING FACE SEAL



**NOTES:**

- ALL MATERIALS ARE RoHS COMPLIANT PER EU DIRECTIVE 2002/95/EC AND AMENDMENTS  
 SHELL: DIECAST ZINC ALLOY, NICKEL PLATED  
 CONTACTS: PHOSPHOR BRONZE WITH 0.76µm [30µ"] MIN GOLD OVER 1.27µm [50µ"] MIN NICKEL PLATING  
 INSULATOR: HIGH TEMPERATURE RESISTANT THERMOPLASTIC, FLAMMABILITY RATING UL94V-0, BLACK  
 O-RING: SILICONE RUBBER, RED
- ENVIRONMENTAL PERFORMANCE PER IEC 60529 CODE IP67 FOR SEAL BETWEEN MATING AREA AND PCB SIDE OF CONNECTOR. O-RING PROVIDES SEAL TO INSIDE FACE OF THE PANEL.
- ELECTRICAL CHARACTERISTICS:  
 CURRENT RATING: 5 AMPS  
 DWV: 1500V DC AT SEA LEVEL
- OPERATING TEMPERATURE: -40°C TO +105°C
- CONNECTOR SEAL TO WITHSTAND TEMPERATURE EXPOSURE OF 150°C FOR 180 SECONDS (SOLDER PREHEAT) FOLLOWED BY 265°C FOR 8 SECONDS (SOLDER BATH). AFTER TEMPERATURE EXPOSURE, CONNECTOR SEAL TO WITHSTAND 34 kPa (5 PSI) PRESSURE.
- RECOMMENDED TORQUE FOR SCREW TIGHTENING (WITH MORE THAN 2.3mm (.090") THREAD ENGAGEMENT):  
 STEEL SCREWS - 0.45 TO 0.65 N-m (4 TO 5.75 IN-LBS)  
 BRASS SCREWS - 0.35 TO 0.50 N-m (3.1 TO 4.5 IN-LBS)
- CONSULT WITH AMPHENOL CANADA REGARDING HEX JACK SOCKETS, DUST COVERS OR OTHER ACCESSORIES.



**RECOMMENDED P.C.B. LAYOUT**  
(COMPONENT SIDE OF BOARD)

Alternate for MDB-E09SE-860

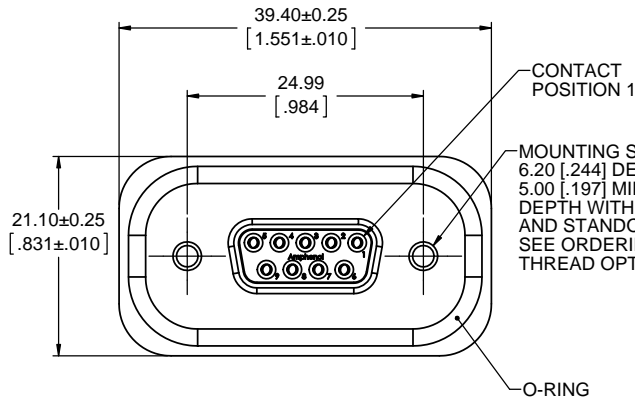


|                            |                        |           |          |
|----------------------------|------------------------|-----------|----------|
| UNLESS SPECIFIED OTHERWISE | DRAWN                  | M.SHAH    | AUG12/11 |
| PRIMARY UNITS MILLIMETERS  | CHECKED                |           |          |
| SECONDARY INCHES           | M.E. APP'D             |           |          |
| REFERENCE IN PARENTHESES   | Q.A. APP'D             |           |          |
| GENERAL TOLERANCES         | DWG APPR.              | K.LAMBIE  | AUG16/11 |
| 1 DECIMAL PLACE            | ENG. REL. NO.          | EAR 13901 |          |
| 2 DECIMAL PLACES ±0.15     | REF.                   |           |          |
| 3 DECIMAL PLACES           | THIRD ANGLE PROJECTION |           |          |
| ANGULAR DEGREES            | DO NOT SCALE DRAWING   |           |          |

**Amphenol Canada Corp.**  
[www.amphenolcanada.com](http://www.amphenolcanada.com)  
**MDBR SERIES RUGGED D-SUB CONNECTOR, 9 POSITION SOCKET, VERTICAL PCB TAILS, RoHS COMPLIANT**

DWG. NO. **P-MDBR-E09SE-860** REV **A**

CODE ID NO. 03554 DWG SIZE: X SCALE: 5:2 SHEET 1 OF 1



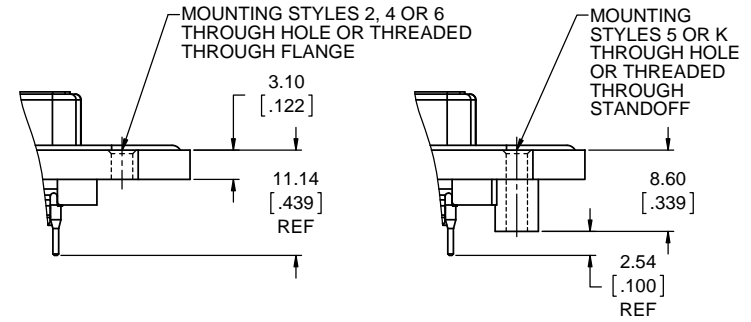
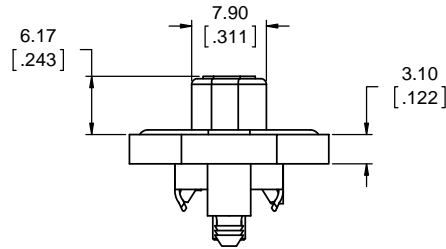
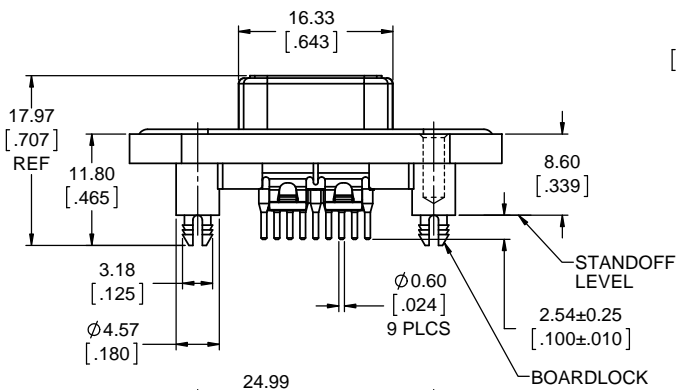
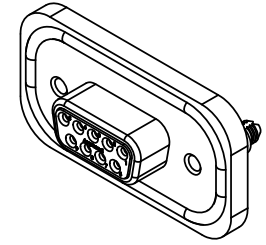
**ORDERING CODE: MDBR - E09 SE - X N0**

SERIES, RUGGED D-SUB  
 SIZE E SHELL, 9 CONTACTS  
 CONNECTOR TYPE (S = SOCKET)  
 TERMINATION TYPE (E = PCB TAIL)

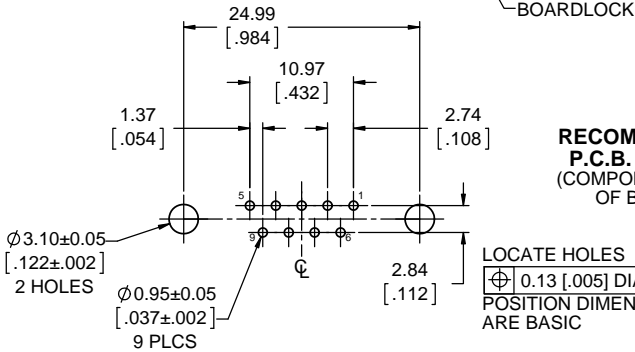
MOUNTING STYLE  
 2 = 3.05 [.120] DIA HOLE THROUGH FLANGE  
 4 = #4-40 THREAD THROUGH FLANGE  
 5 = #4-40 THREAD THROUGH STANDOFF  
 6 = M3x0.5 THREAD THROUGH FLANGE  
 A = #4-40 THREADED STANDOFF WITH BOARDLOCK  
 J = M3x0.5 THREADED STANDOFF WITH BOARDLOCK  
 K = 3.05 [.120] DIA HOLE THROUGH STANDOFF

FEATURES AND MODIFIER CODES (N0 = STANDARD)

| REVISIONS |                             |          |       |
|-----------|-----------------------------|----------|-------|
| REV       | DESCRIPTION, ECN, EAR NO.   | DATE     | APP'D |
| A         | PRODUCT DRAWING (EAR 13901) | AUG08/11 | K.L.  |

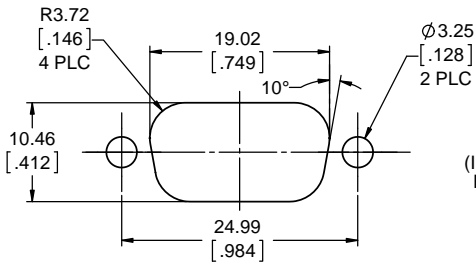


**ADDITIONAL MOUNTING STYLES**  
 (SEE ORDERING CODE)



**RECOMMENDED P.C.B. LAYOUT**  
 (COMPONENT SIDE OF BOARD)

LOCATE HOLES  
 0.13 [.005] DIA.  
 POSITION DIMENSIONS ARE BASIC



**RECOMMENDED PANEL CUTOUT**  
 (INCLUDES CLEARANCE FOR PIN CONNECTOR)



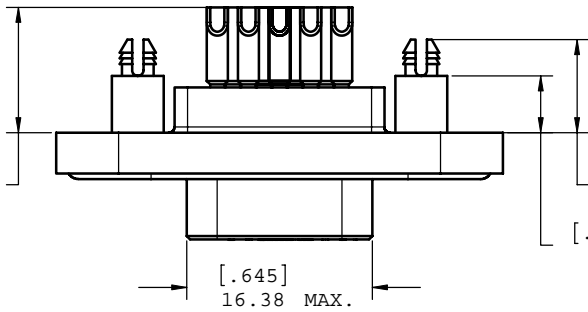
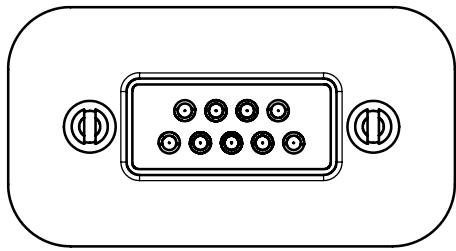
**NOTES:**

- ALL MATERIALS ARE RoHS COMPLIANT PER EU DIRECTIVE 2002/95/EC AND AMENDMENTS  
 SHELL: DIECAST ZINC ALLOY, NICKEL PLATED  
 CONTACTS: PHOSPHOR BRONZE WITH 0.76µm [30µ"] MIN GOLD OVER 1.27µm [50µ"] MIN NICKEL PLATING  
 INSULATOR: HIGH TEMPERATURE RESISTANT THERMOPLASTIC, FLAMMABILITY RATING UL94V-0, BLACK  
 GASKET: SILICONE RUBBER, BLACK  
 O-RING: SILICONE RUBBER, RED
- ENVIRONMENTAL PERFORMANCE PER IEC 60529 CODE IP67 FOR SEAL BETWEEN MATING AREA AND PCB SIDE OF CONNECTOR. O-RING PROVIDES SEAL TO INSIDE FACE OF THE PANEL.
- ELECTRICAL CHARACTERISTICS:  
 CURRENT RATING: 5 AMPS  
 DWV: 1500V DC AT SEA LEVEL
- OPERATING TEMPERATURE: -40°C TO +105°C
- WHEN THROUGH HOLE OR THREADED THROUGH MOUNTING STYLES ARE USED, CUSTOMER TO PROVIDE METHOD FOR SEALING MOUNTING HOLES.
- CONSULT WITH AMPHENOL CANADA REGARDING HEX JACK SOCKETS, DUST COVERS OR OTHER ACCESSORIES.

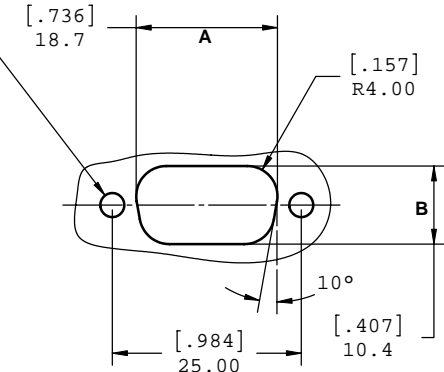
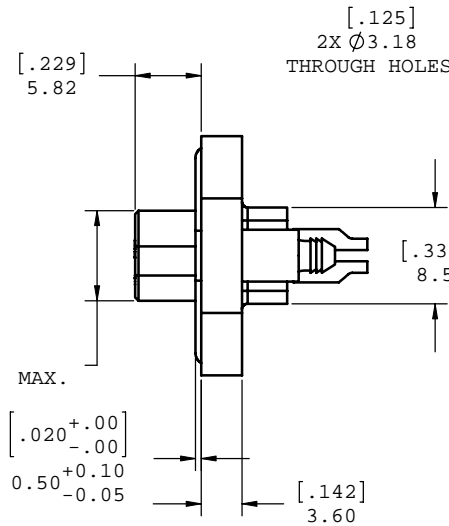
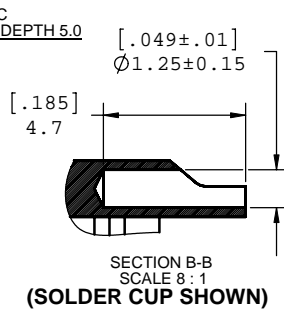
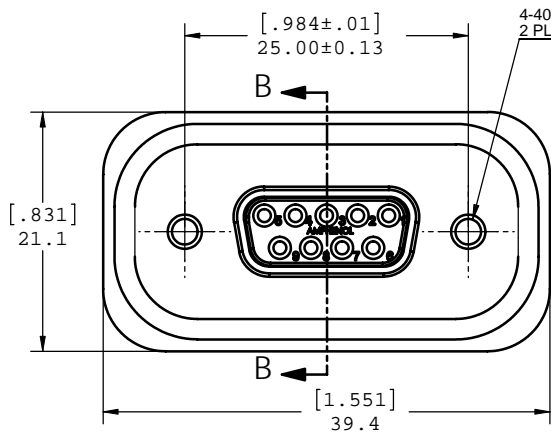
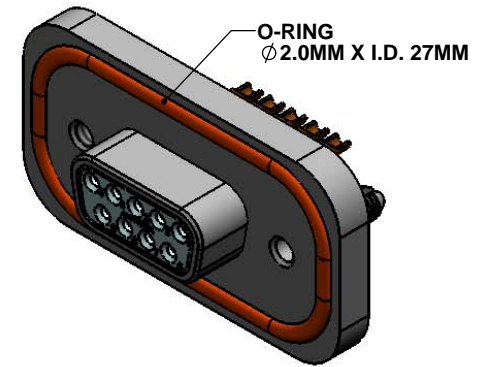
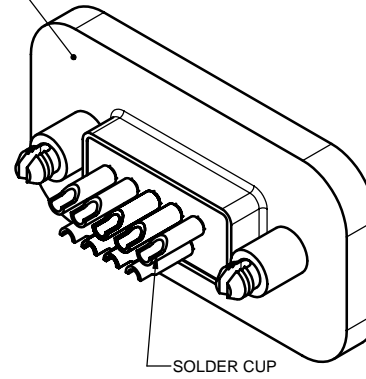
**MDBR-E09SE-AN0 is an alternate for MDB-E09SE-860**

|                            |                        |           |          |
|----------------------------|------------------------|-----------|----------|
| UNLESS SPECIFIED OTHERWISE | DRAWN                  | M.SHAH    | JUL18/11 |
| PRIMARY UNITS MILLIMETERS  | CHECKED                |           |          |
| SECONDARY INCHES           | M.E. APP'D             |           |          |
| REFERENCE IN PARENTHESSES  | Q.A. APP'D             |           |          |
| GENERAL TOLERANCES         | DWG APPR.              | K.LAMBIE  | AUG08/11 |
| 1 DECIMAL PLACE            | ENG. REL. NO.          | EAR 13901 |          |
| 2 DECIMAL PLACES ±0.15     | REF.                   |           |          |
| 3 DECIMAL PLACES           | THIRD ANGLE PROJECTION |           |          |
| ANGULAR DEGREES            | DO NOT SCALE DRAWING   |           |          |

|   |             |            |              |
|---|-------------|------------|--------------|
| <b>Amphenol Canada Corp.</b>  |             |            |              |
| www.amphenolcanada.com  |             |            |              |
| MDBR SERIES RUGGED D-SUB CONNECTOR, 9 POSITION SOCKET, VERTICAL PCB TAILS, RoHS COMPLIANT |             |            |              |
| DWG. NO.  |             | REV        |              |
|   |             | A          |              |
| CODE ID NO. 03554   | DWG SIZE: X | SCALE: 5:2 | SHEET 1 OF 1 |



METAL DIE CAST  
OUTER SHELL



**RECOMMENDED PANEL CUT-OUT**  
 \* DIMENSIONS SHOWN ON A,B ARE ENLARGED FOR CLEARANCE FOR MATING PIN CONNECTOR.

NOTES:

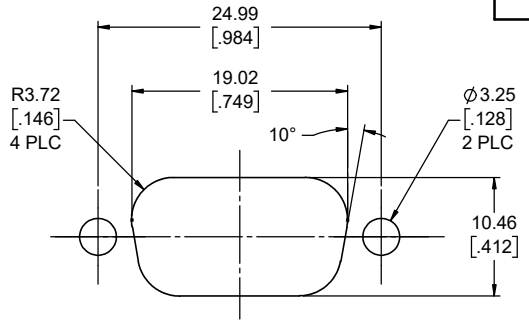
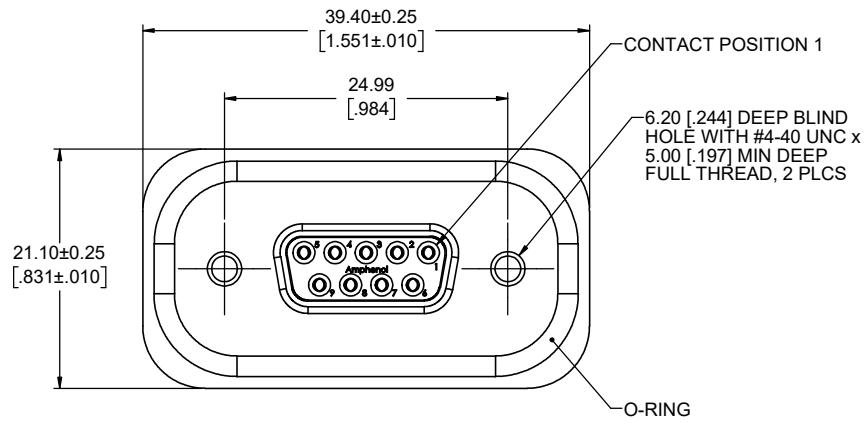
- MATERIAL:
  - SHELL: ZINC ALLOY 50 MICRO INCH MINIMUM NICKEL PLATING.
  - CONTACTS: COPPER ALLOY, 30 MICRO INCH GOLD OVER 50 MICRO INCH NICKEL PLATING.
  - INSULATOR: THERMOPLASTIC RESIN, UL94V-0 FLAMMABILITY RATING.
  - GASKETS: SILICONE RUBBER, 70 DUROMETER.
  - SEALING COMPOUND: POTTING EPOXY
- FEATURES: SEALED CONNECTOR IN THE MATED AND UNMATED CONDITIONS.
- OPERATING TEMPERATURE: -40°C TO +85°C.
- ENVIRONMENT PERFORMANCE: IP67.
- PART IS RoHS COMPLIANT.

Old drawing

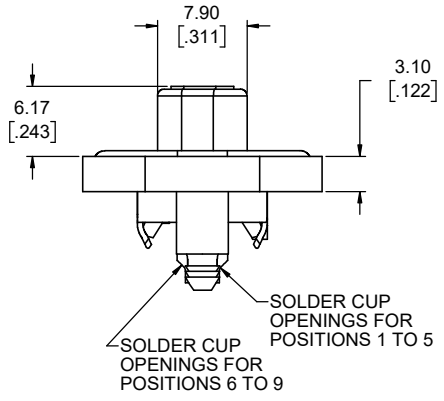
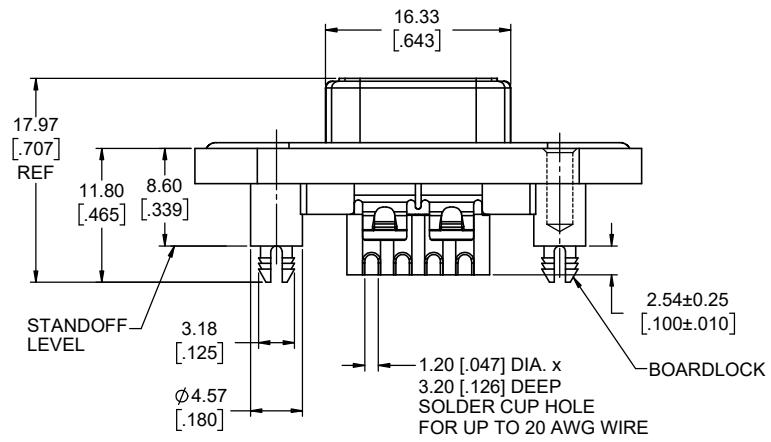
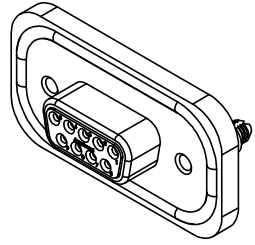


|   |        |           |           |   |                 |
|---|--------|-----------|-----------|---|-----------------|
| UNLESS OTHERWISE SPECIFIED DIMENSIONS ARE IN MILLIMETER TOLERANCES ARE: |        | APPROVALS | DATE      | <b>Amphenol Canada Corp.</b>                                |                 |
| DECIMALS  | ANGLES | DRAWN     | 7/24/2006 |   |                 |
| .XX ±.10  | ± 1°   | DESIGNED  | 7/24/2006 | TITLE<br>RUGGED 9 SOCKET CONNECTOR<br>D-SUB WITH SOLDER CUP |                 |
| .X ±.25   |        | S.SEMENOV |           |   |                 |
| MATERIAL AND FINISH   |        | CHECKED   |           | SIZE  | DWG. NO.        |
| REF.  |        | QA APP'D  |           | C   | P-MDBE-09SM-860 |
| CODE IDENT. NO.   |        | IE APP'D  |           | SCALE   | PROJECT         |
|   |        | DWG APP'D | 7/24/2006 | 3:1   | MDB             |
|   |        |           |           |   | SHEET           |
|   |        |           |           |   | 1 OF 1          |

| REVISIONS |                             |          |       |
|-----------|-----------------------------|----------|-------|
| REV       | DESCRIPTION, ECN, EAR NO.   | DATE     | APP'D |
| A         | PRODUCT DRAWING (EAR 15113) | APR27/22 | E.Q   |



**RECOMMENDED PANEL CUTOUT**  
(INCLUDES CLEARANCE FOR PIN CONNECTOR)



**NOTES:**

- ALL MATERIALS ARE RoHS COMPLIANT PER EU DIRECTIVE 2011/65/EU AND AMENDMENTS  
SHELL: DIECAST ZINC ALLOY, NICKEL PLATED  
CONTACTS: PHOSPHOR BRONZE WITH 0.76µm [30µ"] MIN GOLD OVER 1.27µm [50µ"] MIN NICKEL PLATING  
INSULATOR: HIGH TEMPERATURE RESISTANT THERMOPLASTIC, FLAMMABILITY RATING UL94V-0, BLACK  
GASKET: SILICONE RUBBER, BLACK  
O-RING: SILICONE RUBBER, RED
- ENVIRONMENTAL PERFORMANCE PER IEC 60529 CODE IP67 FOR SEAL BETWEEN MATING AREA AND PCB SIDE OF CONNECTOR. O-RING PROVIDES SEAL TO INSIDE FACE OF THE PANEL.
- ELECTRICAL CHARACTERISTICS:  
CURRENT RATING: 5 AMPS  
DWV: 1500V DC AT SEA LEVEL
- OPERATING TEMPERATURE: -40°C TO +105°C
- RECOMMENDED TORQUE FOR SCREW TIGHTENING (WITH MORE THAN 2.3mm (.090") THREAD ENGAGEMENT):  
STEEL SCREWS - 0.45 TO 0.65 N-m (4 TO 5.75 IN-LBS)  
BRASS SCREWS - 0.35 TO 0.50 N-m (3.1 TO 4.5 IN-LBS)
- CONSULT WITH AMPHENOL CANADA REGARDING HEX JACK SOCKETS, DUST COVERS OR OTHER ACCESSORIES.

**ORDERING CODE: MDBR - E09 S M - 860**

SERIES, RUGGED D-SUB \_\_\_\_\_  
 SIZE E SHELL, 9 CONTACTS \_\_\_\_\_  
 CONNECTOR TYPE \_\_\_\_\_  
 S = SOCKET  
 TERMINATION TYPE \_\_\_\_\_  
 M = SOLDER CUP  
 VARIATION CODE \_\_\_\_\_  
 860 = #4-40 THREADED STANDOFF WITH BOARDLOCK  
 WIDE FLANGE DIECAST SHELL WITH O-RING FACE SEAL

**Alternate for MDB-E09SM-860**

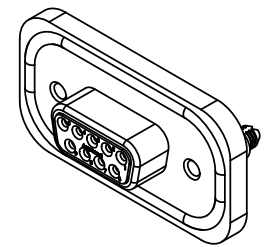
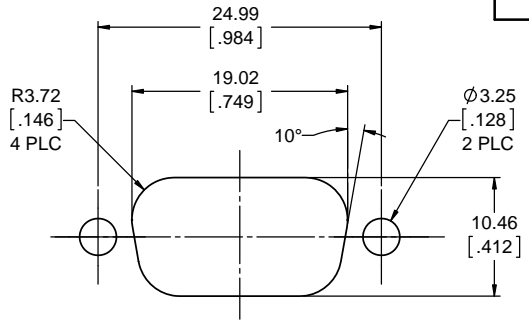
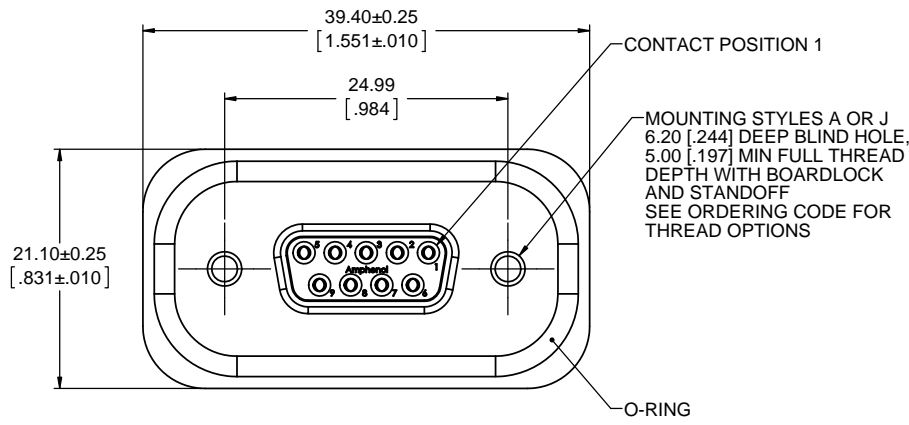
|                            |                        |           |          |
|----------------------------|------------------------|-----------|----------|
| UNLESS SPECIFIED OTHERWISE | DRAWN                  | F.WANG    | APR27/22 |
| PRIMARY UNITS MILLIMETERS  | CHECKED                |           |          |
| SECONDARY INCHES           | M.E. APP'D             |           |          |
| REFERENCE IN PARENTHESES   | Q.A. APP'D             |           |          |
| GENERAL TOLERANCES         | DWG APPR.              | E.QU      | APR27/22 |
| 1 DECIMAL PLACE            | ENG. REL. NO.          | EAR 15113 |          |
| 2 DECIMAL PLACES ±0.15     | REF.                   |           |          |
| 3 DECIMAL PLACES           | THIRD ANGLE PROJECTION |           |          |
| ANGULAR DEGREES            | DO NOT SCALE DRAWING   |           |          |

**Amphenol Canada Corp.**  
Commercial Products  
**MDBR SERIES RUGGED D-SUB CONNECTOR, 9 POSITION SOCKET, VERTICAL SOLDER CUP TAILS, RoHS COMPLIANT**

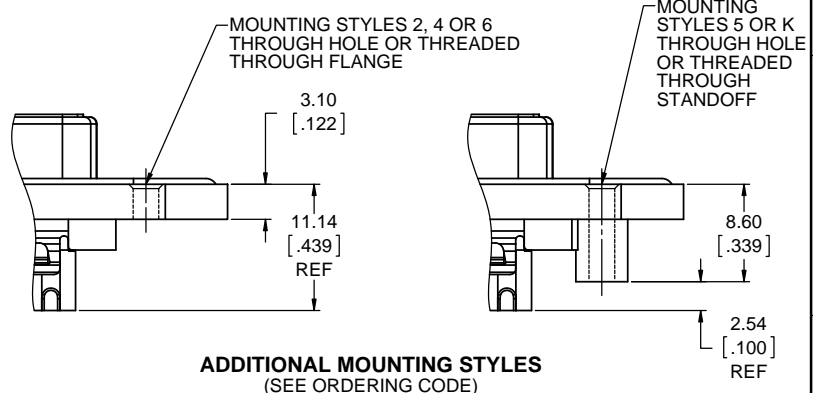
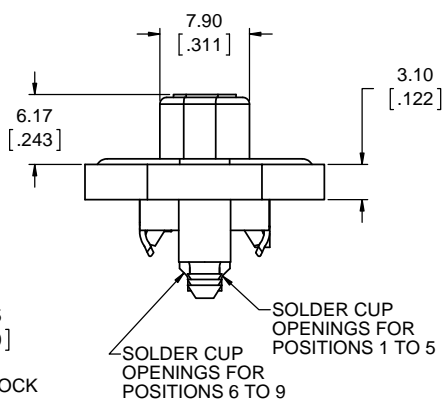
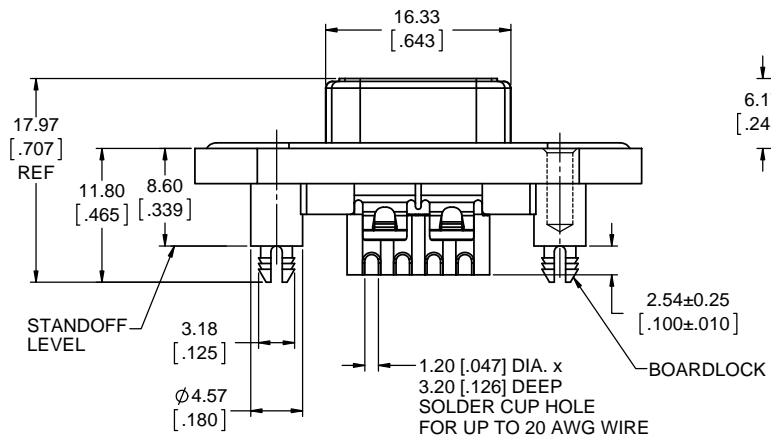
DWG. NO. \_\_\_\_\_ REV **A**  
**P-MDBR-E09SM-860**  
 CODE ID NO. 03554 DWG SIZE: X SCALE: 3:1 SHEET 1 OF 1



| REVISIONS |                             |          |       |
|-----------|-----------------------------|----------|-------|
| REV       | DESCRIPTION, ECN, EAR NO.   | DATE     | APP'D |
| A         | PRODUCT DRAWING (EAR 13901) | AUG08/11 | K.L.  |



**RECOMMENDED PANEL CUTOUT**  
(INCLUDES CLEARANCE FOR PIN CONNECTOR)



**ADDITIONAL MOUNTING STYLES**  
(SEE ORDERING CODE)

**ORDERING CODE: M D B R - E 0 9 S M - X N 0**

- SERIES, RUGGED D-SUB \_\_\_\_\_
- SIZE E SHELL, 9 CONTACTS \_\_\_\_\_
- CONNECTOR TYPE  
S = SOCKET \_\_\_\_\_
- TERMINATION TYPE  
M = SOLDER CUP \_\_\_\_\_
- MOUNTING STYLE  
2 = 3.05 [.120] DIA HOLE THROUGH FLANGE  
4 = #4-40 THREAD THROUGH FLANGE  
5 = #4-40 THREAD THROUGH STANDOFF  
6 = M3x0.5 THREAD THROUGH FLANGE  
A = #4-40 THREADED STANDOFF WITH BOARDLOCK  
J = M3x0.5 THREADED STANDOFF WITH BOARDLOCK  
K = 3.05 [.120] DIA HOLE THROUGH STANDOFF
- FEATURES AND MODIFIER CODES  
NO = STANDARD \_\_\_\_\_

MDBR-E09SM-AN0 is an alternate for MDB-E09SM-860



**NOTES:**

- ALL MATERIALS ARE RoHS COMPLIANT PER EU DIRECTIVE 2002/95/EC AND AMENDMENTS  
SHELL: DIECAST ZINC ALLOY, NICKEL PLATED  
CONTACTS: PHOSPHOR BRONZE WITH 0.76µm [30µ"] MIN GOLD OVER 1.27µm [50µ"] MIN NICKEL PLATING  
INSULATOR: HIGH TEMPERATURE RESISTANT THERMOPLASTIC, FLAMMABILITY RATING UL94V-0, BLACK  
GASKET: SILICONE RUBBER, BLACK  
O-RING: SILICONE RUBBER, RED
- ENVIRONMENTAL PERFORMANCE PER IEC 60529 CODE IP67 FOR SEAL BETWEEN MATING AREA AND PCB SIDE OF CONNECTOR. O-RING PROVIDES SEAL TO INSIDE FACE OF THE PANEL.
- ELECTRICAL CHARACTERISTICS:  
CURRENT RATING: 5 AMPS  
DWV: 1500V DC AT SEA LEVEL
- OPERATING TEMPERATURE: -40°C TO +105°C
- WHEN THROUGH HOLE OR THREADED THROUGH MOUNTING STYLES ARE USED, CUSTOMER TO PROVIDE METHOD FOR SEALING MOUNTING HOLES.
- CONSULT WITH AMPHENOL CANADA REGARDING HEX JACK SOCKETS, DUST COVERS OR OTHER ACCESSORIES.

|                            |                        |           |          |
|----------------------------|------------------------|-----------|----------|
| UNLESS SPECIFIED OTHERWISE | DRAWN                  | M.SHAH    | JUL13/11 |
| PRIMARY UNITS MILLIMETERS  | CHECKED                |           |          |
| SECONDARY UNITS INCHES     | M.E. APP'D             |           |          |
| REFERENCE IN PARENTHESES   | Q.A. APP'D             |           |          |
| GENERAL TOLERANCES         | DWG APPR.              | K.LAMBIE  | AUG08/11 |
| 1 DECIMAL PLACE            | ENG. REL. NO.          | EAR 13901 |          |
| 2 DECIMAL PLACES ±0.15     | REF.                   |           |          |
| 3 DECIMAL PLACES           | THIRD ANGLE PROJECTION |           |          |
| ANGULAR DEGREES            | DO NOT SCALE DRAWING   |           |          |

**Amphenol Canada Corp.**  
www.amphenolcanada.com

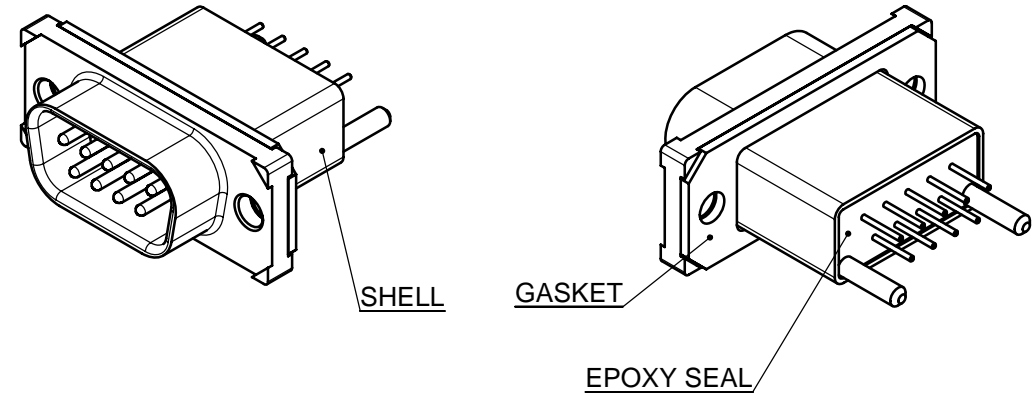
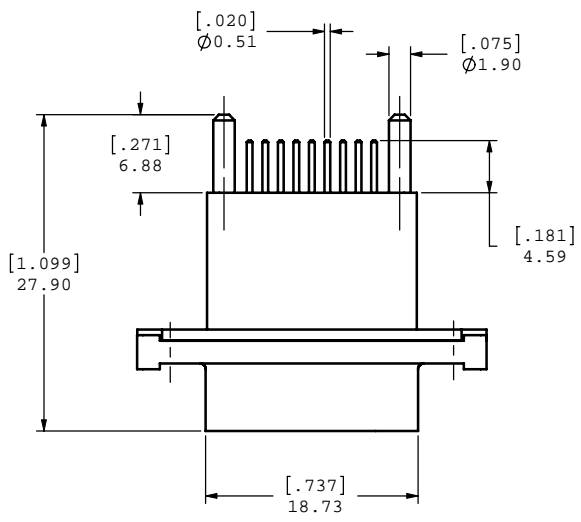
**MDBR SERIES RUGGED D-SUB CONNECTOR, 9 POSITION SOCKET, VERTICAL SOLDER CUP TAILS, RoHS COMPLIANT**

DWG. NO. \_\_\_\_\_ REV A

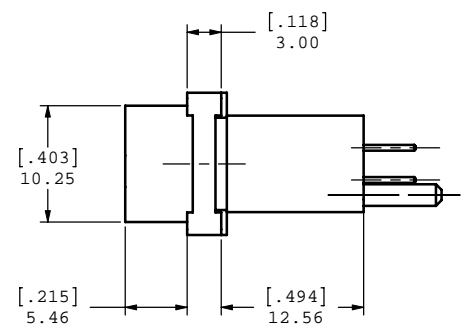
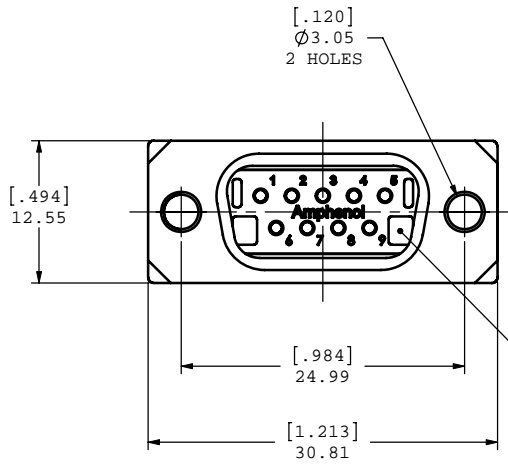
**P-MDBR-E09SM-XXX**

CODE ID NO. 03554 DWG SIZE: X SCALE: 3:1 SHEET 1 OF 1

| REVISIONS |       |               |          |          |
|-----------|-------|---------------|----------|----------|
| REV.      | EAR   | DESCRIPTION   | DATE     | APPROVED |
| F         | 13741 | NOTE UPDAATES | JUL06/10 | K.L      |
|           |       |               |          |          |



**MDB-E09PA-765 IS SHOWN**



**HOUSING**

**NOTES:**

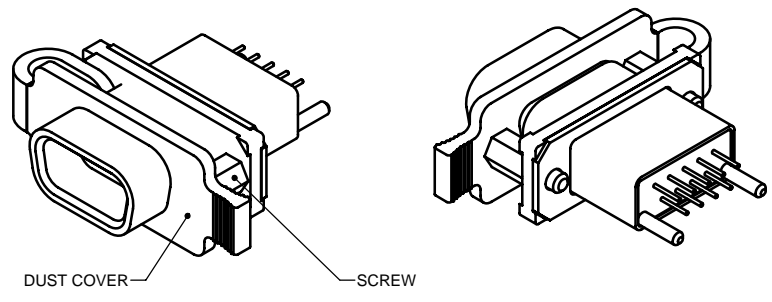
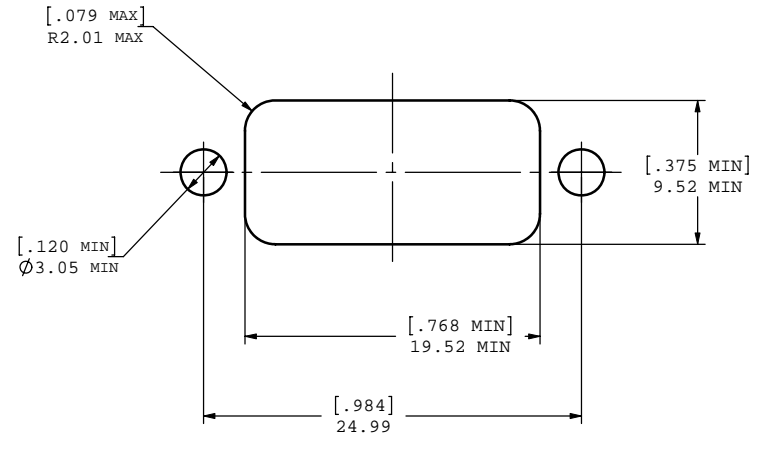
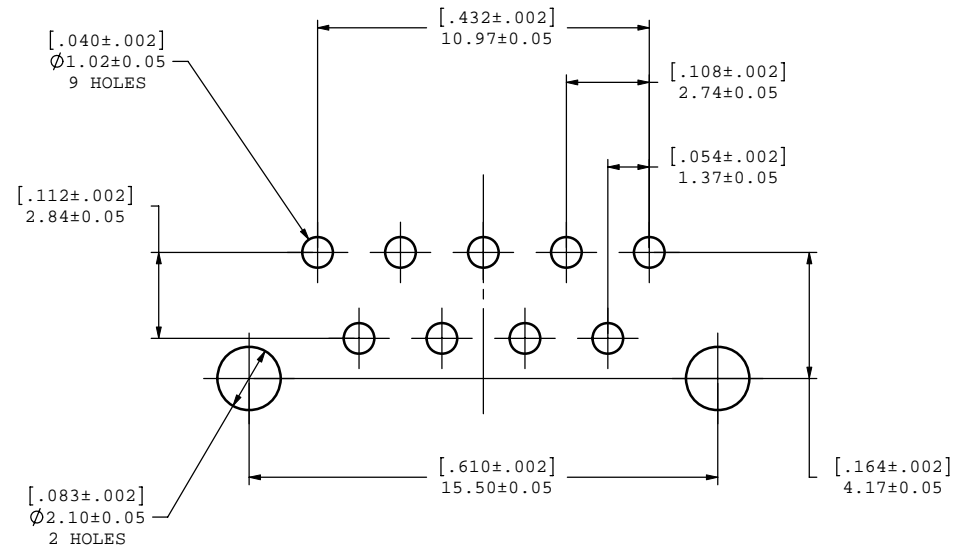
- MATERIAL:**
  - SHELL: ZINC ALLOY WITH 50 MICRO INCH MINIMUM NICKEL PLATING,
  - CONTACTS: COPPER ALLOY 30 MICRO INCH GOLD OVER 50 MICRO INCH NICKEL PLATING,
  - HOUSING: THERMOPLASTIC POLYESTER RESIN,
  - GASKET: SILICONE RUBBER,
  - SCREWS: STAINLESS STEEL,
  - DUST COVER: SILICONE RUBBER.
- FEATURES:** SEALED CONNECTOR IN THE MATED AND UNMATED CONDITIONS.
- OPERATING TEMPERATURE:** -40°C TO +105°C.
- ENVIRONMENT PERFORMANCE:** IP67.
- CONNECTOR IS ROHS COMPLIANT PER EU DIRECTIVE 2002/95/EC AND AMENDMENTS.**
- PART IS UL94V-0 FLAMMABILITY COMPLIANT.**
- PART NUMBER FOR ORDER:**
  - MDB-E09PA-760 - WITH DUST COVER AND SCREWS,
  - MDB-E09PA-765 - NO DUST COVER AND SCREWS.

**Old drawing**



|   |        |           |           |                              |   |
|---|--------|-----------|-----------|------------------------------|---|
| UNLESS OTHERWISE SPECIFIED DIMENSIONS ARE IN MILLIMETER TOLERANCES ARE: |        | APPROVALS | DATE      | <b>Amphenol Canada Corp.</b> |   |
| DECIMALS  | ANGLES | DRAWN     | S.SEMENOV |                              |   |
| .XX ±.10  | ± 1°   | DESIGNED  | S.SEMENOV | OCT06/06                     | TITLE   |
| X ±.25  |        | CHECKED   |           |                              | RUGGED 9 PIN,<br>D-SUB CONNECTOR,<br>VERTICAL MOUNT |
| MATERIAL AND FINISH   |        | QA APP'D  |           |                              | SIZE  |
|   |        | IE APP'D  |           |                              | C   |
| REF.  |        | DWG APP'D | A.GREEN   | OCT06/06                     | DWG. NO.  |
| CODE IDENT. NO.   |        |           |           |                              | P-MDB-E09PA-76X                                     |
|   |        |           |           |                              | REV.  |
|   |        |           |           |                              | F   |
|   |        |           |           |                              | SCALE   |
|   |        |           |           |                              | 3:1   |
|   |        |           |           |                              | PROJECT   |
|   |        |           |           |                              | MDB   |
|   |        |           |           |                              | SHEET   |
|   |        |           |           |                              | 1 OF 2  |

| REVISIONS |       |              |          |          |
|-----------|-------|--------------|----------|----------|
| REV.      | EAR   | DESCRIPTION  | DATE     | APPROVED |
| F         | 13741 | NOTE UPDATES | JUL06/10 | K.L      |
|           |       |              |          |          |



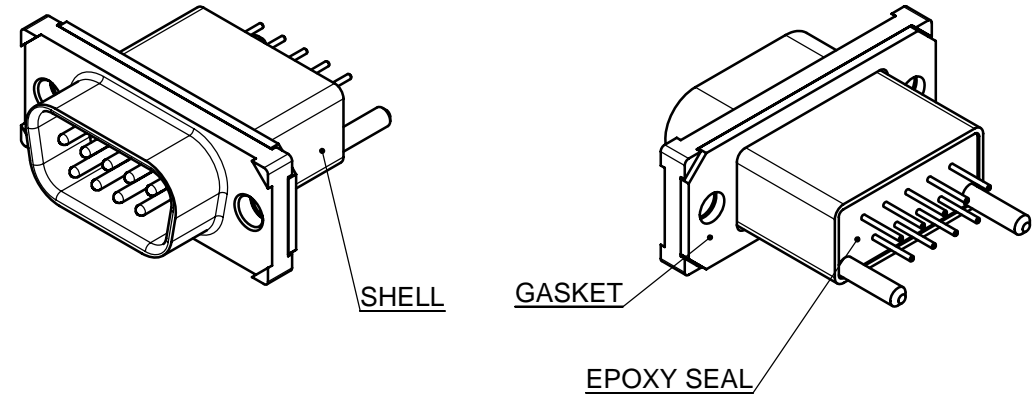
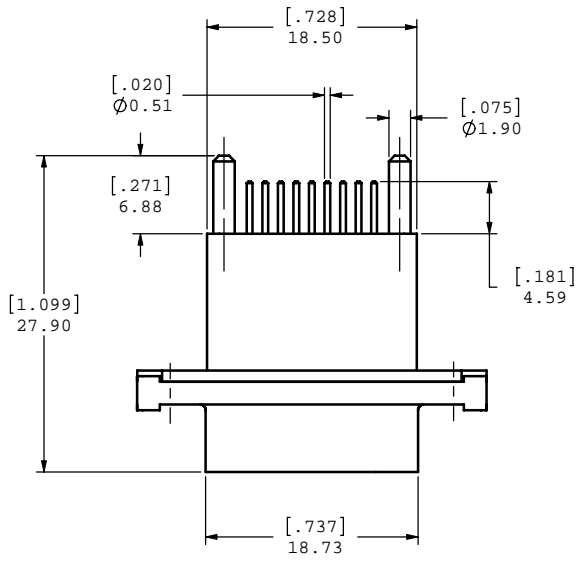
**MDB-E09PA-760 IS SHOWN**  
**FOR MORE INFORMATION ABOUT DUST COVER,**  
**SEE DRAWING P-MDB-227-093-205BP**

Old drawing

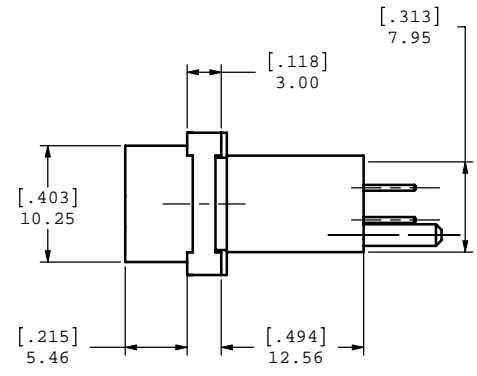
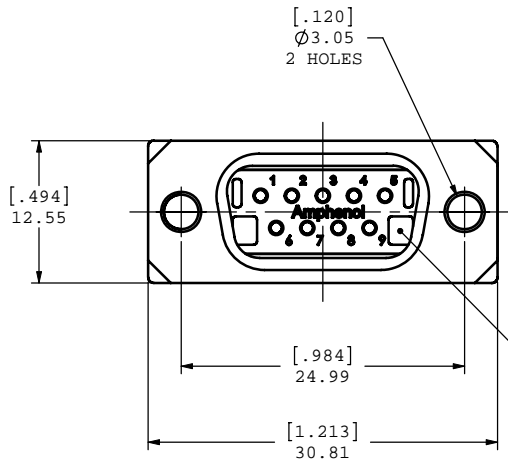


|  |                    |          |                              |   |                             |           |       |        |
|--|--------------------|----------|------------------------------|---|-----------------------------|-----------|-------|--------|
| UNLESS OTHERWISE SPECIFIED DIMENSIONS ARE IN MILLIMETER TOLERANCES ARE:<br><br>DECIMALS .XX ±.10 .X ±.25<br>ANGLES ± 1°<br><br>MATERIAL AND FINISH | APPROVALS          | DATE     | <b>Amphenol Canada Corp.</b> |   |                             |           |       |        |
|  | DRAWN S.SEMENOV    | OCT06/06 |                              |   |                             |           |       |        |
|  | DESIGNED S.SEMENOV | OCT06/06 | TITLE                        | RUGGED 9 PIN,<br>D-SUB CONNECTOR,<br>VERTICAL MOUNT |                             |           |       |        |
|  | CHECKED            |          | SIZE                         | C   | DWG. NO.<br>P-MDB-E09PA-76X | REV.<br>F |       |        |
| REF.   | QA APP'D           |          | SCALE                        | 3:1   | PROJECT                     | MDB       | SHEET | 2 OF 2 |
| CODE IDENT. NO.  | IE APP'D           |          | DWG APP'D                    | A.GREEN   | OCT06/06                    |           |       |        |

| REVISIONS |       |              |          |          |
|-----------|-------|--------------|----------|----------|
| REV.      | EAR   | DESCRIPTION  | DATE     | APPROVED |
| B         | 13741 | NOTE UPDATES | JUL06/10 | K.L      |



**MDB-E09PE-765 IS SHOWN**



**HOUSING**

**NOTES:**

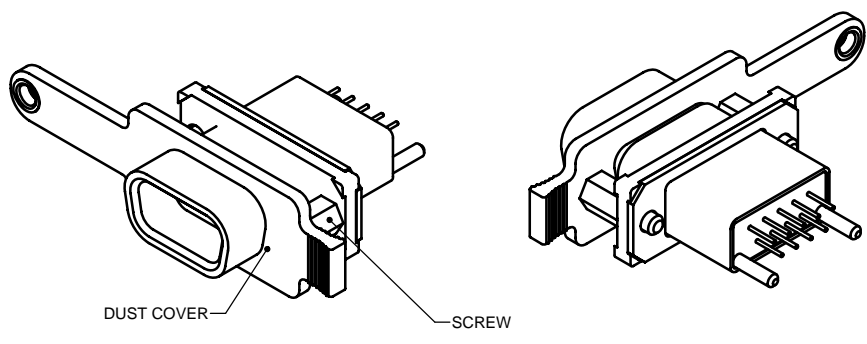
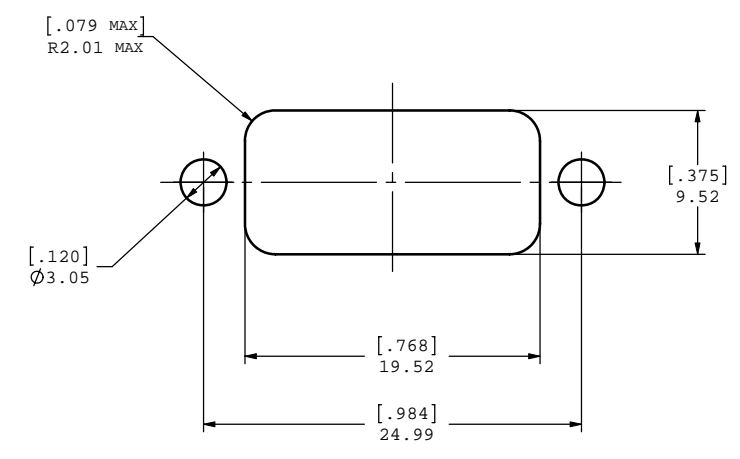
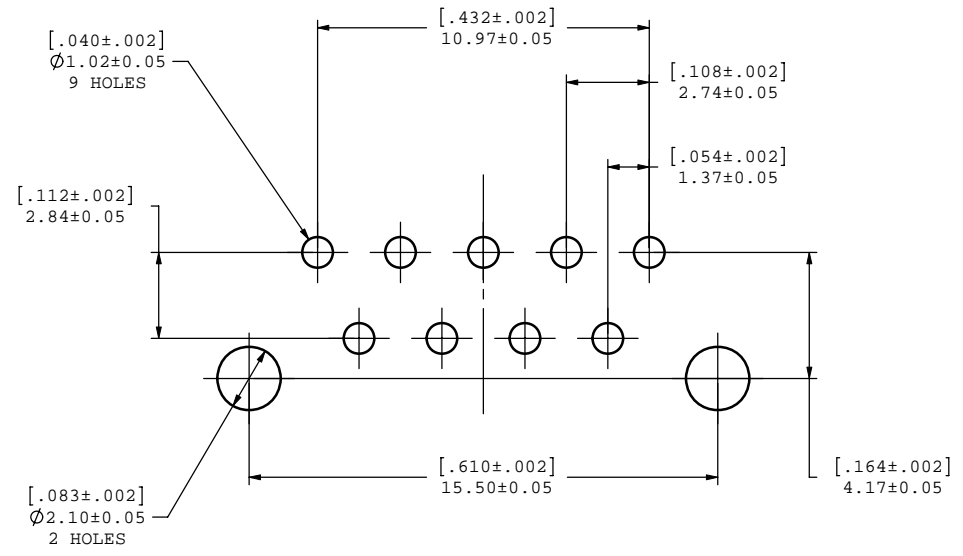
- MATERIAL:**
  - SHELL: ZINC ALLOY WITH 50 MICRO INCH MINIMUM NICKEL PLATING,
  - CONTACTS: COPPER ALLOY 30 MICRO INCH GOLD OVER 50 MICRO INCH NICKEL PLATING,
  - HOUSING: THERMOPLASTIC RESIN, UL94V-0
  - GASKET: SILICONE RUBBER,
  - SCREWS: STAINLESS STEEL,
  - DUST COVER: SILICONE RUBBER.
- FEATURES:** SEALED CONNECTOR IN THE MATED AND UNMATED CONDITIONS.
- OPERATING TEMPERATURE:** -40°C TO +105°C.
- ENVIRONMENT PERFORMANCE:** IP67.
- CONNECTOR IS RoHS COMPLIANT PER EU DIRECTIVE 2002/95/EC AND AMENDMENTS.**
- PART NUMBER FOR ORDER:**
  - MDB-E09PE-760 - WITH DUST COVER AND SCREWS.(SEE PAGE 2 FOR MORE INFORMATION)
  - MDB-E09PE-765 - NO DUST COVER AND SCREWS.

**Alternates for MDB-E09PA-760 & MDB-E09PA-765**



|   |        |           |          |                              |   |
|---|--------|-----------|----------|------------------------------|---|
| UNLESS OTHERWISE SPECIFIED DIMENSIONS ARE IN MILLIMETER TOLERANCES ARE: |        | APPROVALS | DATE     | <b>Amphenol Canada Corp.</b> |   |
| DECIMALS  | ANGLES | DRAWN     |          |                              |   |
| .XX ±.10  | ± 1°   | S.SEMENOV | OCT06/06 | TITLE                        | RUGGED 9 PIN,<br>D-SUB CONNECTOR,<br>VERTICAL MOUNT |
| .X ±.25   |        | DESIGNED  | OCT06/06 | SIZE                         | C   |
| MATERIAL AND FINISH   |        | CHECKED   |          | DWG. NO.                     | P-MDB-E09PE-76X                                     |
| REF.  |        | QA APP'D  |          | PROJECT                      | MDB   |
| CODE IDENT. NO.   |        | IE APP'D  |          | SCALE                        | 3:1   |
|   |        | DWG APP'D | OCT06/06 | SHEET                        | 1 OF 2  |
|   |        | A.GREEN   |          |                              |   |

| REVISIONS |       |              |          |          |
|-----------|-------|--------------|----------|----------|
| REV.      | EAR   | DESCRIPTION  | DATE     | APPROVED |
| B         | 13741 | NOTE UPDATES | JUL06/10 | K.L      |



**MDB-E09PE-760 IS SHOWN**  
**FOR MORE INFORMATION ABOUT DUST COVER,**  
**SEE DRAWING P-MDB-227-093-205BP**

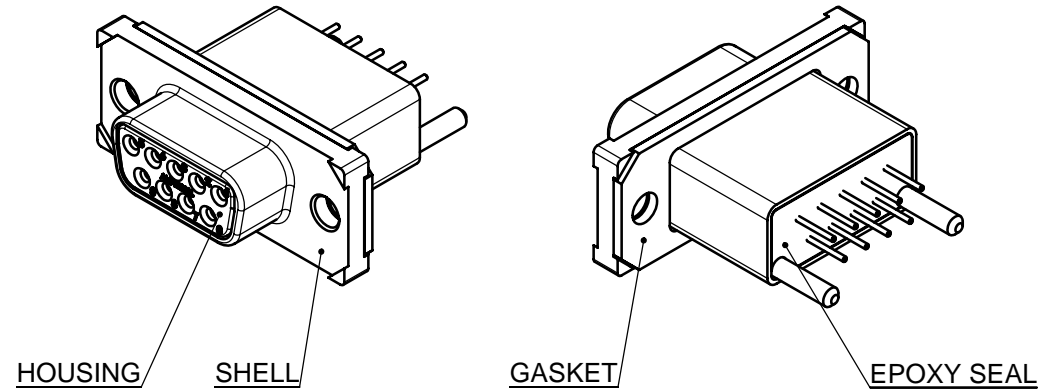
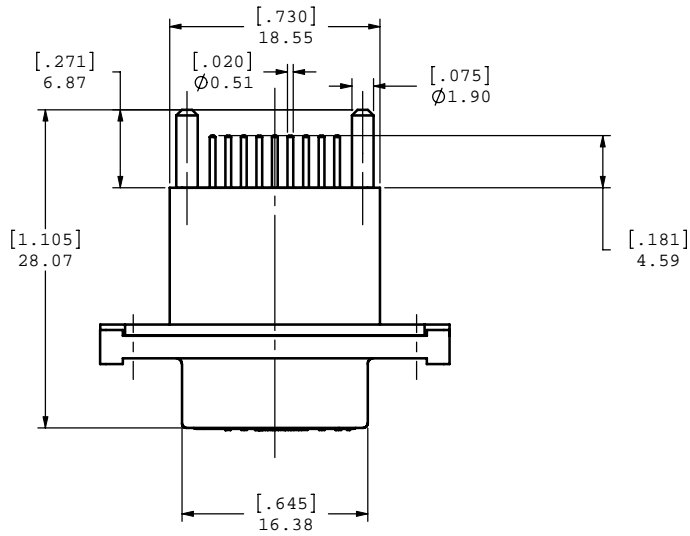
**Alternates for MDB-E09PA-760 & MDB-E09PA-765**



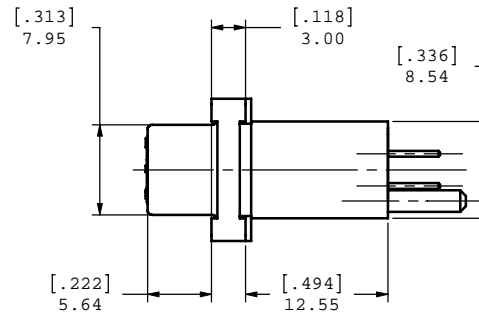
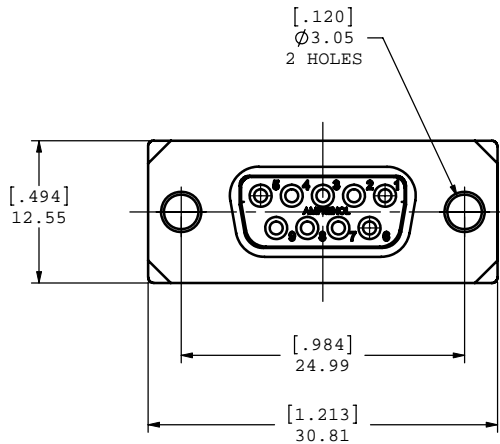
|   |               |           |          |   |                 |
|---|---------------|-----------|----------|---|-----------------|
| UNLESS OTHERWISE SPECIFIED DIMENSIONS ARE IN MILLIMETER TOLERANCES ARE: |               | APPROVALS | DATE     | <b>Amphenol Canada Corp.</b>                        |                 |
| DECIMALS  | ANGLES        | DRAWN     | OCT06/06 |   |                 |
| .XX $\pm .10$   | $\pm 1^\circ$ | S.SEMENOV |          | TITLE RUGGED 9 PIN, D-SUB CONNECTOR, VERTICAL MOUNT |                 |
| .X $\pm .25$  |               | DESIGNED  | OCT06/06 |   |                 |
| MATERIAL AND FINISH   |               | CHECKED   |          | SIZE  | C               |
| REF.  |               | QA APP'D  |          | DWG. NO.  | P-MDB-E09PE-76X |
| CODE IDENT. NO.   |               | IE APP'D  |          | PROJECT   | MDB             |
|   |               | DWG APP'D | OCT06/06 | SCALE   | 3:1             |
|   |               | A.GREEN   |          | SHEET   | 2 OF 2          |

DO NOT SCALE DRAWING  
 THIS DOCUMENT CONTAINS PROPRIETARY INFORMATION AND SUCH INFORMATION MAY NOT BE DISCLOSED TO OTHERS FOR ANY PURPOSE OR USED FOR MANUFACTURING PURPOSES WITHOUT PERMISSION FROM AMPHENOL CANADA CORP.

| REV | DESCRIP                  | DATE     | APPRVD |
|-----|--------------------------|----------|--------|
| E   | NOTE UPDATES (EAR 13741) | JUL06/10 | K.L    |
|     |                          |          |        |
|     |                          |          |        |



**MDB-E09SA-765 IS SHOWN**



**NOTES:**

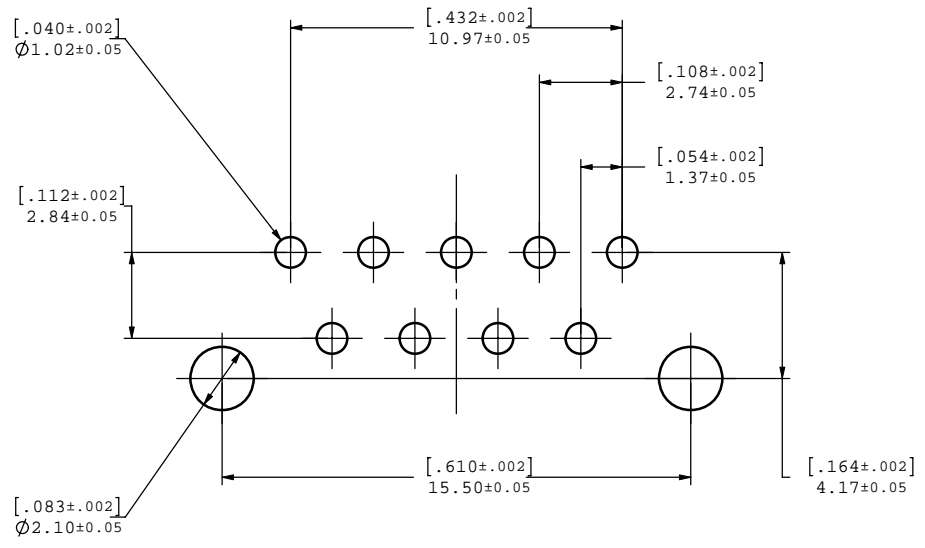
- MATERIAL:**
  - SHELL: ZINC ALLOY WITH 50 MICRO INCH MINIMUM NICKEL PLATING,
  - CONTACTS: COPPER ALLOY 30 MICRO INCH GOLD OVER 50 MICRO INCH NICKEL PLATING,
  - HOUSING: THERMOPLASTIC POLYESTER RESIN,
  - GASKET: SILICONE RUBBER,
  - SCREWS: STAINLESS STEEL,
  - DUST COVER: SILICONE RUBBER.
- FEATURES:** SEALED CONNECTOR IN THE MATED AND UNMATED CONDITIONS.
- OPERATING TEMPERATURE:** -40°C TO +105°C.
- ENVIRONMENT PERFORMANCE:** IP67.
- CONNECTOR IS ROHS COMPLIANT PER EU DIRECTIVE 2002/95/EC AND AMENDMENTS.**
- PART IS UL94V-0 FLAMMABILITY COMPLIANT.**
- PART NUMBER FOR ORDER:**
  - MDB-E09SA-760 - WITH DUST COVER AND SCREWS,
  - MDB-E09SA-765 - NO DUST COVER AND SCREWS.

Old drawing

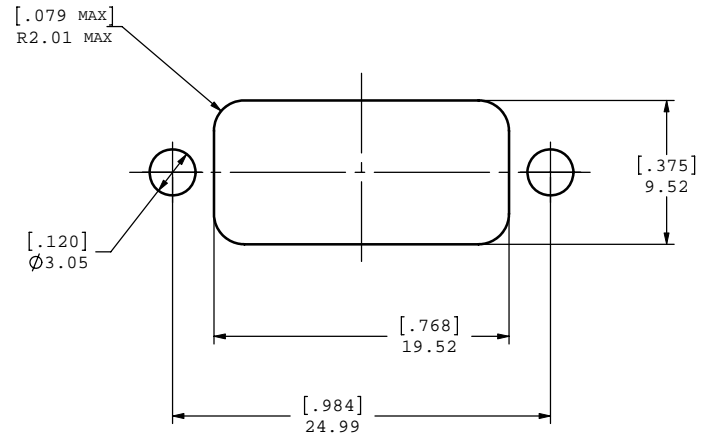


|   |        |           |          |                              |   |
|---|--------|-----------|----------|------------------------------|---|
| UNLESS OTHERWISE SPECIFIED DIMENSIONS ARE IN MILLIMETER TOLERANCES ARE: |        | APPROVALS | DATE     | <b>Amphenol Canada Corp.</b> |   |
| DECIMALS  | ANGLES | DRAWN     | OCT02/06 |                              |   |
| .XX ±.10  | ± 1°   | S.SEMENOV |          | TITLE                        | RUGGED 9 SOKET,<br>D-SUB CONNECTOR,<br>VERTICAL MOUNT |
| .X ±.25   |        | DESIGNED  | OCT02/06 | SIZE                         | C   |
| MATERIAL AND FINISH   |        | S.SEMENOV |          | DWG. NO.                     | P-MDB-E09SA-76X                                       |
|   |        | CHECKED   |          | REV.                         | E   |
|   |        | QA APP'D  |          | SCALE                        | 3:1   |
|   |        | IE APP'D  |          | PROJECT                      | MDB   |
| REF.  |        | DWG APP'D | OCT02/06 | SHEET                        | 1 OF 2  |
| CODE IDENT. NO.   |        | A.GREEN   |          |                              |   |

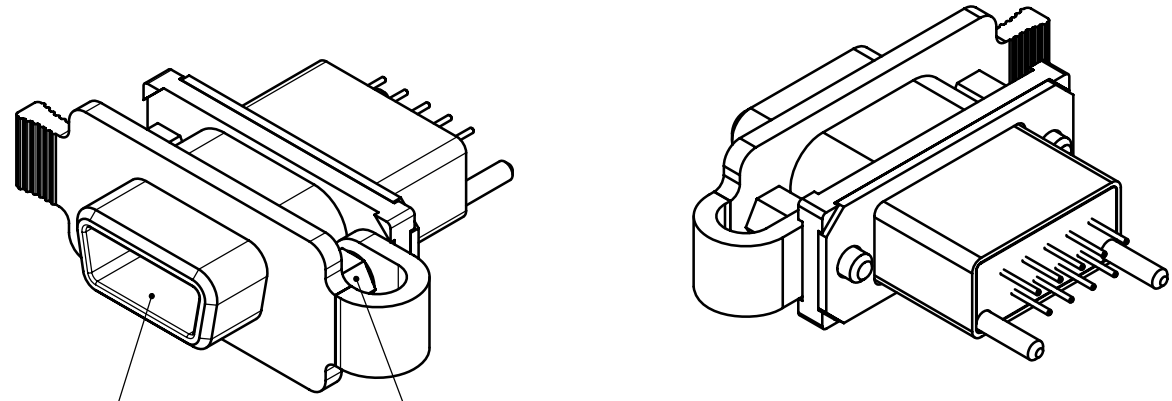
|     |   |                          |   |          |   |        |
|-----|---|--------------------------|---|----------|---|--------|
| REV | - | DESCRPT                  | - | DATE     | - | APPRVD |
| E   | - | NOTE UPDATES (EAR 13741) | - | JUL06/10 | - | K.L    |



**RECOMMENDED P.C.B. LAYOUT**



**RECOMMENDED PANEL CUTOUT DIMENSIONS FOR REFERENCE ONLY**



**DUST COVER**

**SCREW**

**MDB-E09SA-760 IS SHOWN**

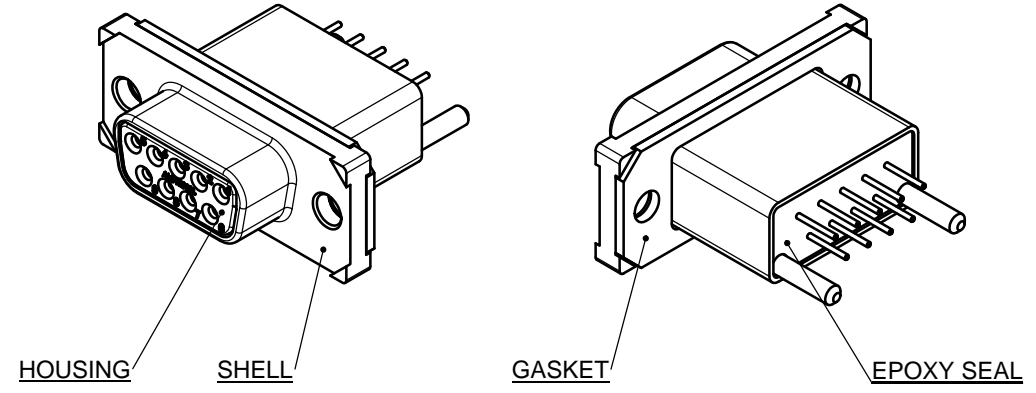
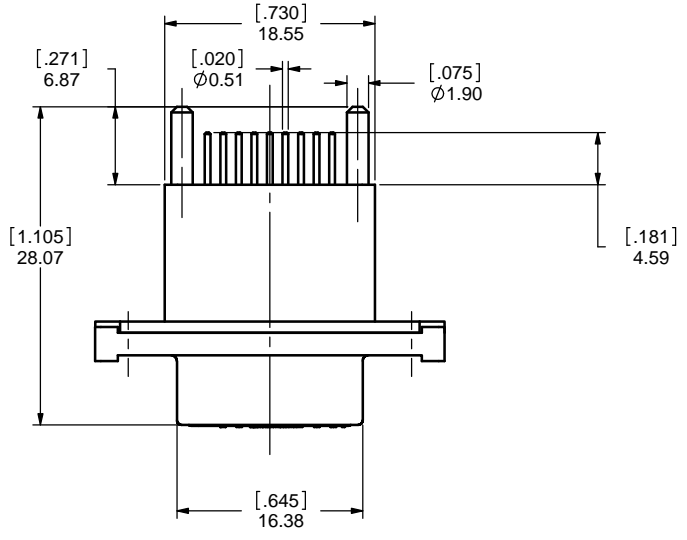
**FOR MORE INFORMATION ABOUT DUST COVER, SEE DRAWING P-MDB-227-093-205BP**

**Old drawing**

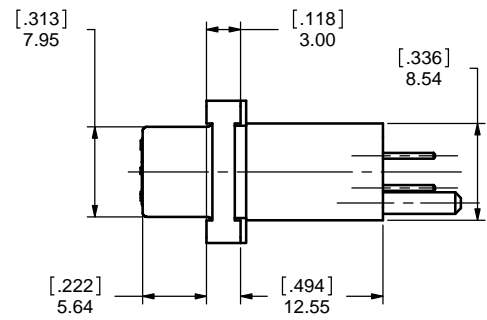
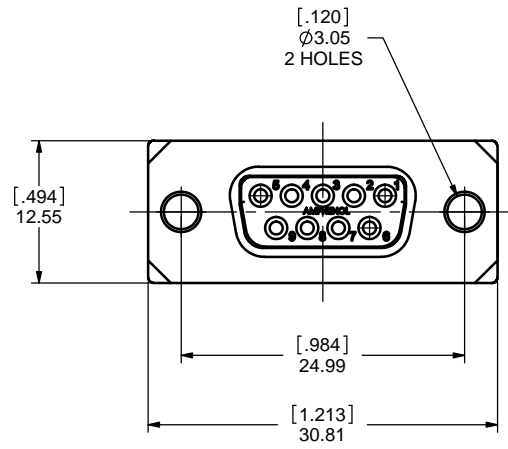


|   |        |           |          |   |                                    |
|---|--------|-----------|----------|---|------------------------------------|
| UNLESS OTHERWISE SPECIFIED DIMENSIONS ARE IN MILLIMETER TOLERANCES ARE: |        | APPROVALS | DATE     | <b>Amphenol Canada Corp.</b>                                    |                                    |
| DECIMALS  | ANGLES | DRAWN     | OCT02/06 |   |                                    |
| .XX ±.10  | ± 1°   | S.SEMENOV |          | TITLE<br><b>RUGGED 9 SOKET, D-SUB CONNECTOR, VERTICAL MOUNT</b> |                                    |
| .X ±.25   |        | DESIGNED  | OCT02/06 |   |                                    |
| MATERIAL AND FINISH   |        | CHECKED   |          | SIZE  | DWG. NO.<br><b>P-MDB-E09SA-76X</b> |
| REF.  |        | QA APP'D  |          | C   |                                    |
| CODE IDENT. NO.   |        | IE APP'D  |          | SCALE   | REV. E                             |
|   |        | DWG APP'D | OCT02/06 | 3:1   | PROJECT                            |
|   |        | A.GREEN   |          | MDB   | SHEET                              |
|   |        |           |          |   | 2 OF 2                             |

| REV | DESCRPT                  | DATE     | APPRVD |
|-----|--------------------------|----------|--------|
| B   | NOTE UPDATES (EAR 13741) | JUL06/10 | K.L    |
| C   | COVER UPDATE (EAR 13954) | SEP22/11 | K.L    |



**MDB-E09SE-765 IS SHOWN**



NOTES:

1. MATERIAL:
  - SHELL: ZINC ALLOY WITH 50 MICRO INCH MINIMUM NICKEL PLATING,
  - CONTACTS: COPPER ALLOY 30 MICRO INCH GOLD OVER 50 MICRO INCH NICKEL PLATING,
  - HOUSING: THERMOPLASTIC RESIN, UL94V-0.
  - GASKET: SILICONE RUBBER.
  - SCREWS: STAINLESS STEEL.
  - DUST COVER: SILICONE RUBBER.
2. FEATURES: SEALED CONNECTOR IN THE MATED AND UNMATED CONDITIONS.
3. OPERATING TEMPERATURE: -40°C TO + 105°C.
4. ENVIRONMENT PERFORMANCE: IP67.
5. CONNECTOR IS ROHS COMPLIANT PER EU DIRECTIVE 2002/95/EC AND AMENDMENTS.
6. PART NUMBER FOR ORDER:
  - MDB-E09SE-760 - WITH DUST COVER AND SCREWS,
  - MDB-E09SE-765 - NO DUST COVER AND SCREWS.

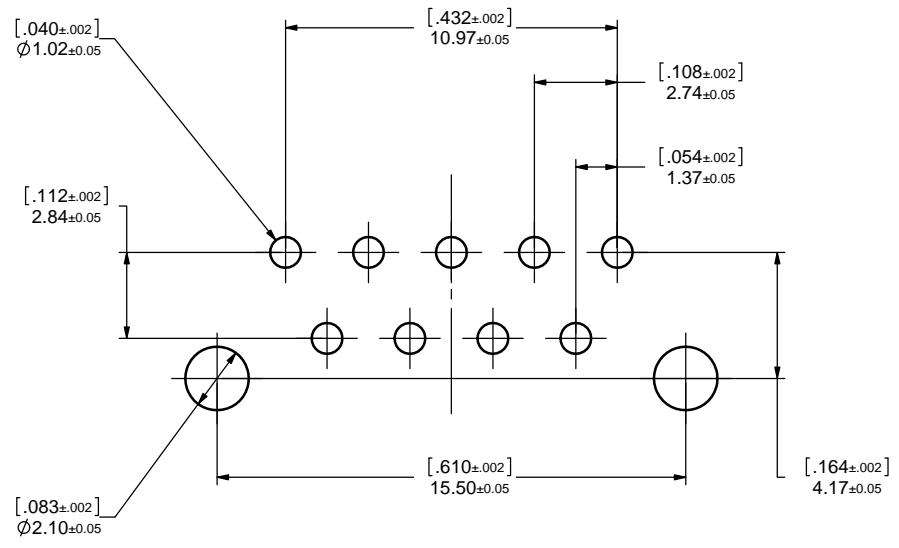
**MDB-E09SE-760 is an alternate for MDB-E09SA-760**



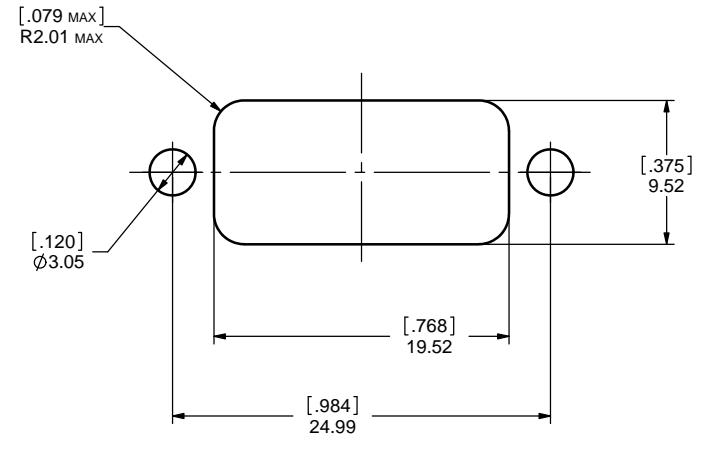
|   |        |           |          |                              |  |
|---|--------|-----------|----------|------------------------------|--|
| UNLESS OTHERWISE SPECIFIED DIMENSIONS ARE IN MILLIMETER TOLERANCES ARE: |        | APPROVALS | DATE     | <b>Amphenol Canada Corp.</b> |  |
| DECIMALS  | ANGLES | DRAWN     | OCT02/06 |                              |  |
| .XX ±.10  | ± 1°   | S.SEMENOV |          | TITLE                        | RUGGED 9 SOCKET, D-SUB CONNECTOR, VERTICAL MOUNT |
| .X ±.25   |        | DESIGNED  | OCT02/06 | SIZE                         | C  |
| MATERIAL AND FINISH   |        | CHECKED   |          | DWG. NO.                     | P-MDB-E09SE-76X                                  |
|   |        | QA APP'D  |          | REV.                         | C  |
| REF.  |        | IE APP'D  |          | SCALE                        | 3:1  |
| CODE IDENT. NO.   |        | DWG APP'D | OCT02/06 | PROJECT                      | MDB  |
|   |        | A.GREEN   |          | SHEET                        | 1 OF 2   |



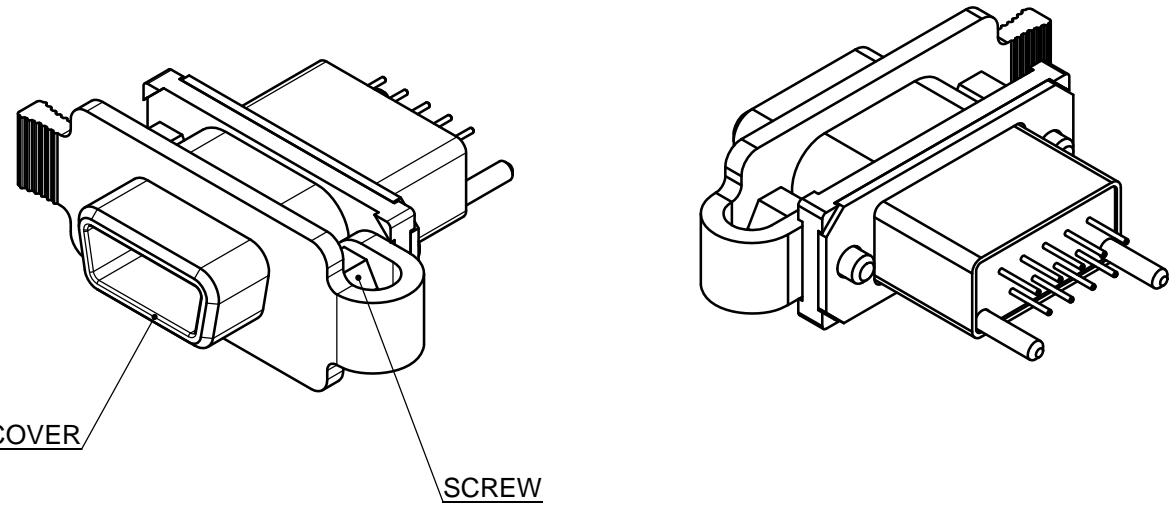
| REV | DESCRIPTION              | DATE     | APPROVED |
|-----|--------------------------|----------|----------|
| B   | NOTE UPDATES (EAR 13741) | JUL06/10 | K.L      |
| C   | COVER UPDATE (EAR 13954) | SEP22/11 | K.L      |



**RECOMMENDED P.C.B. LAYOUT**



**RECOMMENDED PANEL CUTOUT DIMENSIONS FOR REFERENCE ONLY**



**DUST COVER**

**SCREW**

**MDB-E09SE-760 IS SHOWN**

**FOR MORE INFORMATION ABOUT DUST COVER, SEE DRAWING P-MDB-227-093-205BP**

**MDB-E09SE-760 is an alternate for MDB-E09SA-760**



|   |        |           |          |   |                             |
|---|--------|-----------|----------|---|-----------------------------|
| UNLESS OTHERWISE SPECIFIED DIMENSIONS ARE IN MILLIMETER TOLERANCES ARE: |        | APPROVALS | DATE     | <b>Amphenol Canada Corp.</b>                                    |                             |
| DECIMALS  | ANGLES | DRAWN     | OCT02/06 |   |                             |
| .XX ±.10  | ± 1°   | S.SEMENOV |          | TITLE<br><b>RUGGED 9 SOKET, D-SUB CONNECTOR, VERTICAL MOUNT</b> |                             |
| X ±.25  |        | DESIGNED  | OCT02/06 |   |                             |
| MATERIAL AND FINISH   |        | CHECKED   |          | SIZE  | DWG. NO.<br>P-MDB-E09SE-76X |
| REF.  |        | QA APP'D  |          | C   |                             |
| CODE IDENT. NO.   |        | IE APP'D  |          | SCALE   | PROJECT                     |
|   |        | DWG APP'D | OCT02/06 | 3:1   | MDB                         |
|   |        | A.GREEN   |          |   | SHEET                       |
|   |        |           |          |   | 2 OF 2                      |