

SPICE-Equivalent circuit model library

Table 1. Equivalent circuit data

Part Number	L (μ H)	F _{res} (MHz)	C1 (pF)	R1 (Ω)	R2 Nominal DCR of winding (Ω)
HCM1A1104-R20-R	0.2	123.4	8.31	535.28	0.0006
HCM1A1104-R36-R	0.36	86.8	9.35	734.29	0.00104
HCM1A1104-R45-R	0.45	75.9	9.77	827.91	0.00107
HCM1A1104-R47-R	0.47	73.9	9.86	847.50	0.0011
HCM1A1104-R56-R	0.56	66.6	10.21	931.24	0.0016
HCM1A1104-R90-R	0.9	50.1	11.23	1201.93	0.0022
HCM1A1104-1R0-R	1	47.0	11.47	1272.00	0.003
HCM1A1104-1R5-R	1.5	36.9	12.44	1581.94	0.0038
HCM1A1104-2R2-R	2.2	29.3	13.43	1943.76	0.006
HCM1A1104-3R3-R	3.3	23.0	14.56	2417.37	0.011
HCM1A1104-4R7-R	4.7	18.6	15.63	2923.76	0.015
HCM1A1104-5R6-R	5.6	16.7	16.18	3212.64	0.014
HCM1A1104-6R8-R	6.8	14.9	16.82	3566.24	0.016
HCM1A1104-100-R	10	11.8	18.17	4388.21	0.027
HCM1A1104-150-R	15	9.3	19.71	5457.44	0.045
HCM1A1104-220-R	22	7.4	21.28	6705.67	0.058
HCM1A1104-330-R	33	5.8	23.08	8339.57	0.092
HCM1A1104-470-R	47	4.7	24.77	10086.52	0.165
HCM1A1104-101-R	100	3.0	28.80	15138.65	0.27

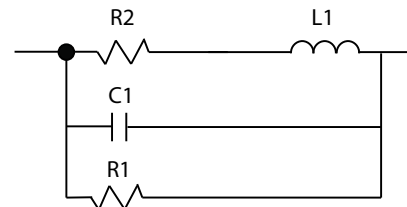


Figure 1. Equivalent circuit

Disclaimer

The data provided is for reference and is intended for evaluation purposes only. Users should verify all intended results in the end application.

Eaton
Electronics Division
 1000 Eaton Boulevard
 Cleveland, OH 44122
 United States
www.eaton.com/electronics

© 2018 Eaton
 All Rights Reserved
 Printed in USA
 Publication No. HCM1A1104 Spice
 April 2018