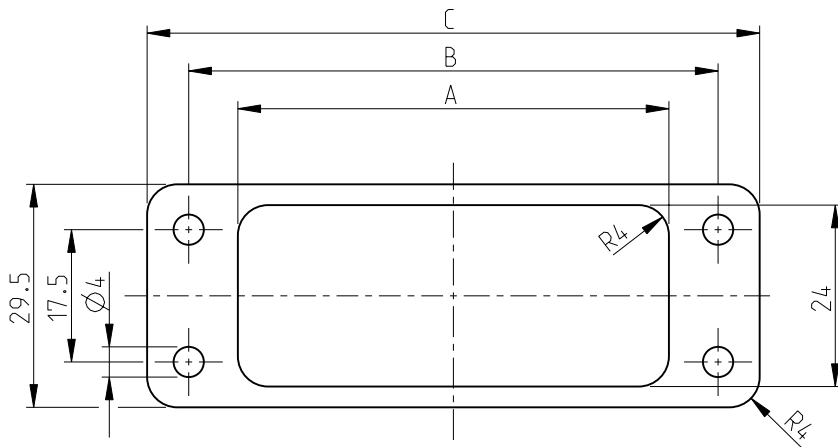


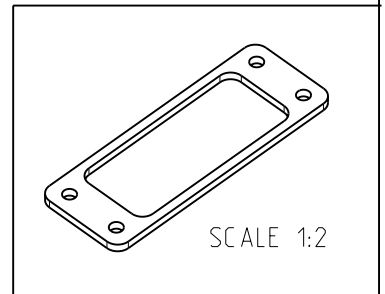
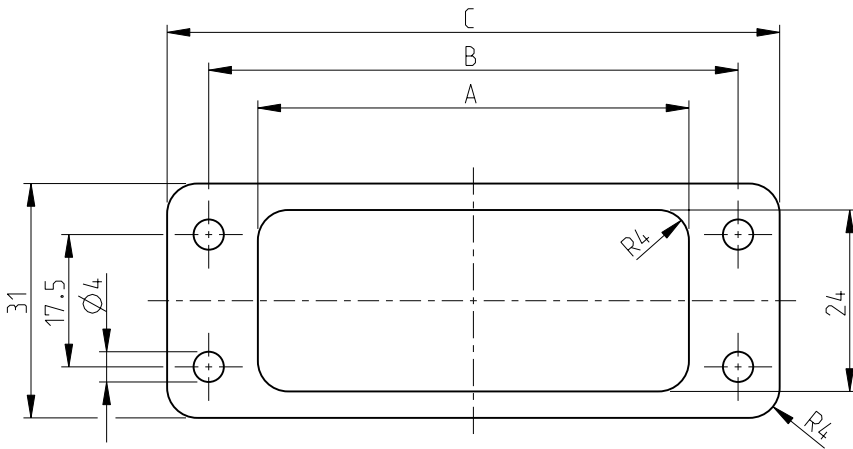
|     |      |           |               |             |           |     |      |
|-----|------|-----------|---------------|-------------|-----------|-----|------|
| LOC | DIST | REVISIONS |               |             |           |     |      |
| A1  | -    | P         | LTR           | DESCRIPTION | DATE      | DWN | APVD |
|     |      | A9        | ECR-10-007735 |             | 01SEP2010 | RK  | SRE  |

NOTES

1 MATERIAL AND COLOR: SEE TABLE



FOR PN 0-7



|    |       |     |    |    |    |   |
|----|-------|-----|----|----|----|---|
| 10 | HA 10 | 1-0 | 57 | 70 | 81 | NBR 60-70 SHORE,1mm THICK<br>COLOR BLACK,ONE SIDE ADHESIVE      |
| 9  | HA 16 | 0-9 | 74 | 86 | 96 | EPDM 69,CONDUCTIVE<br>COLOR BLACK                               |
| 8  | HA 10 | 0-8 | 57 | 70 | 81 | NBR 60-70° SHORE,1mm THICK<br>COLOR BLACK,BOTH SIDES PLAIN      |
| 7  | HA 10 | 0-7 | 57 | 70 | 81 | NBR 60-70° SHORE,1mm THICK<br>COLOR BLACK,BOTH SIDES PLAIN      |
| 6  | HA 16 | 0-6 | 74 | 86 | 96 | FKM 70° SHORE (VITON),-30°C TO +200°C<br>3mm THICK,COLOR BLACK  |
| 5  | HA 10 | 0-5 | 57 | 70 | 81 | NBR 60-70 SHORE,1mm THICK<br>COLOR BLACK,BOTH SIDES PLAIN       |
| 4  | HA 16 | 0-4 | 74 | 86 | 96 | NBR 60-70 SHORE,1mm THICK<br>COLOR BLACK,BOTH SIDES PLAIN       |
| 3  | HA 10 | 0-3 | 57 | 70 | 81 | NBR 60-70 SHORE,1mm THICK<br>COLOR BLACK,BOTH SIDES PLAIN       |
| 2  | HA 16 | 0-2 | 74 | 86 | 96 | ZELKAUTS CHUCK "B",ONE SIDE ADHESIVE<br>2.5mm THICK,COLOR BLACK |
| 1  | HA 10 | 0-1 | 57 | 70 | 81 | ZELKAUTS CHUCK "B",ONE SIDE ADHESIVE<br>2.5mm THICK,COLOR BLACK |

OBSELETE

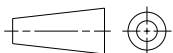
| SI NO | TYPE | PART NO | A | B | C | MATERIAL |
|-------|------|---------|---|---|---|----------|
|-------|------|---------|---|---|---|----------|

DIMENSIONS:

mm

TOLERANCES UNLESS OTHERWISE SPECIFIED:

|        |   |  |
|--------|---|--|
| 0 PLC  | ± | n.ISO 8015:<br>n.ISO 2768-mH-E:<br>n.DIN 16901-120 |
| 1 PLC  | ± |  |
| 2 PLC  | ± |  |
| 3 PLC  | ± |  |
| 4 PLC  | ± |  |
| ANGLES | ± |  |



DWN SCHNEIDER 05.06.2001

CHK SCHWEIGER 05.06.2001

APVD T.SCHNURPFEIL 05.06.2001

PRODUCT SPEC -

APPLICATION SPEC -

WEIGHT -

MATERIAL 1

FINISH



Tyco Electronics,AMP.GmbH  
53757.SanktAugustin.Germany

NAME  
FLANGE MOUNTED SEAL  
SERIES HA 10/16

|      |           |            |               |
|------|-----------|------------|---------------|
| SIZE | CAGE CODE | DRAWING NO | RESTRICTED TO |
| A 4  | 00779     | C-1106350  | -             |

CUSTOMER DRAWING

SCALE 1:1 SHEET 1 OF 1 REV A9

2000

RELEASED FOR PUBLICATION

THIS DRAWING IS UNPUBLISHED.

BY TYCO ELECTRONICS CORPORATION. ALL RIGHTS RESERVED.

