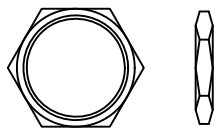
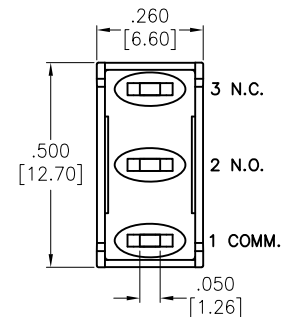
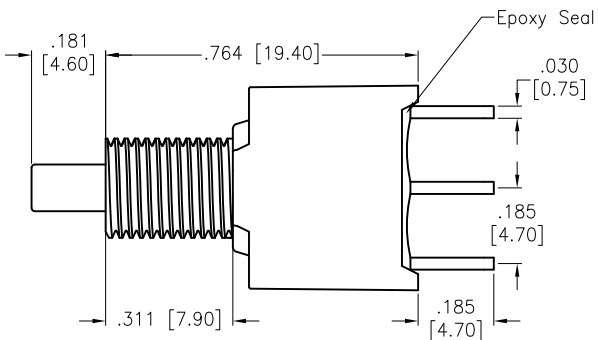
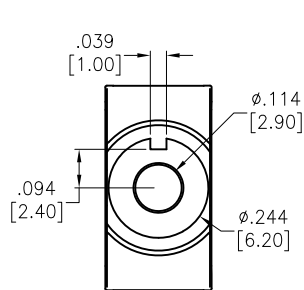
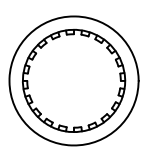


APPROVED: \_\_\_\_\_  
 DATE: \_\_\_\_\_ TITLE: \_\_\_\_\_

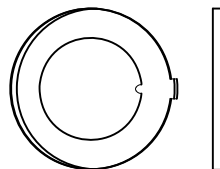
Rev	AWO #	Description	Date	Appr
-		RELEASED	2/18/21	



HEX NUT

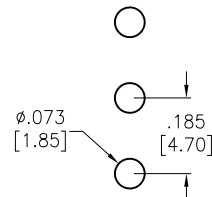
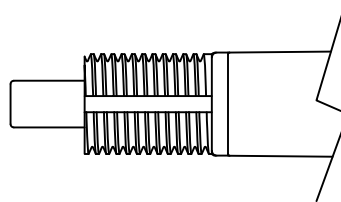


LOCK WASHER

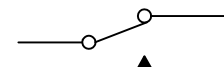


ANTI ROTATIONAL WASHER

INCLUDED HARDWARE



RECOMMENDED PCB LAYOUT



CIRCUIT DIAGRAM (SPDT) MOMENTARY

**SPECIFICATIONS:**

**Material:**  
 Movable Contact: Copper Alloy, Silver Plated  
 Terminal: Copper Alloy, Silver Plated With outer layer in Gold Plating  
**Electrical:**  
 Voltage rating: 120VAC or 38VDC  
 Current rating: 1 Amps  
 Contact resistance: 10 mΩ max  
 Insulation resistance: 1,000 Mohms min  
 Dielectric withstanding voltage: 1,500V RMS @Sea level  
**Mechanical:**  
 Waterproof: IP68  
 Temperature Rating:  
 Operating temperature: -30°C to +85°C  
 Environmental:  
 Lead free, RoHS compliant



UNLESS OTHERWISE SPECIFIED ALL DIMENSIONS ARE INCHES [MM] TOLERANCES: EXCEPT AS NOTED		 909 Rahway Avenue, Union, NJ 07083 Phone: 908-687-5000 Fax: 908-687-5710			
INCHES HOLES					
.X ± .10	∅.X ± .10	TITLE PUSHBUTTON SWITCH, IP68, PCB TYPE SPDT, ON-MOMENTARY, GOLD OVER SILVER PLATED			
.XX ± .020	∅.XX ± .015				
.XXX ± .015	∅.XXX ± .010	SIZE X	PART NO. SW-PB8-AA00A2GE-2	REV. -	
APPROVALS		DATE	REF: S00198T	SCALE: NTS	SHEET 1 OF 1
DRAWN	LH	2/18/21			
CHECKED	AC	2/18/21			
APPROVED					