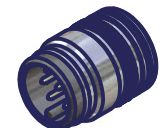


Allgemeine Kennwerte General Characteristics		Norm Standard			
Polzahl	Number of contacts		8		
Kontaktanordnung	Contact configuration	IEC 947-5-2			
Bemessungsspannung	Rated Voltage	IEC 664	30V AC / DC		
Verschmutzungsgrad	Pollution Degree	IEC 664	3		
Betriebsstrom	Current carrying capacity	IEC 512-3 Test 5 b	2A		
Durchgangswiderstand	Contact Resistance	IEC 512-2 Test 2 A	< 5mOhm		
Bemessungsstoßspannung	Rated Impulse Withstand Voltage	IEC 664	2kV		
Prüfspannung	Test Voltage	IEC 60512-2 Test 4 A	1 kV / 60 sec		
Isolationswiderstand	Insulation Resistance	IEC 512-2 Test 3 A	< 10 Gohm		
IP - Schutzart	IP Degree Of Protection	IEC 529	IP 67		
Stift Durchmesser	Pin Diameter		0,6mm		
Werkstoffe	Kontakte	Materials	Kupferlegierung / copper alloy		
	Kontaktoberfläche		Au/Ni		
	Kontaktträger		PA 6.6		
	Dichtung (O-Ring)				
	Gehäuse		CuZn (brass) mit Ni-Oberfläche Nickel Plated		
Anschlußart	Termination		Löt / Solder		
Brennbarkeit	Kontaktträger	Flammfähigkeit	Inserts	UL 94	V-0
	Leitung / Kabel		Cable		
Mechanische Lebensdauer	Mechanical Operation		500 Steckzyklen / Mating Cycles		
Temperaturbereich	Temperature Range	IEC 60668-1	-25°C / +90°C		

(1:1)



This drawing and its contents are the proprietary and confidential property of Woodhead Industries Inc. and/or its subsidiaries and may not be used or disclosed to others without the express prior written consent of Woodhead Industries Inc. and/or its subsidiaries.					
		UNLESS OTHERWISE SPECIFIED x = ± 1 X.X = ± 0,1 X.XX = ± 0,05 Winkel = 1°	Scale 5:1 (1:1)	Dimensions mm	
PROJECTION 1 : GER			Material	M12US 8-P Rec. Heidenhain	
			Finish	SPR 060021	
		Date	Name	SD-0941 087GM 0500A	
		PROC 12.06.2008	US	Sheet 1	
		CHK 12.06.2008	NS	A3	
		Norm. 12.06.2008	NS	Filename SD-0941 087GM 0500A.idw	
		Woodhead Connectivity GmbH			
		Gewerbestraße 60 75015 Bretten-Gölshausen Tel.: 07252/9496-0 Fax: 07252/9496-199			
01	INITIAL RELEASE	12.06.08	US		
Rev.	Change	Date	Name		