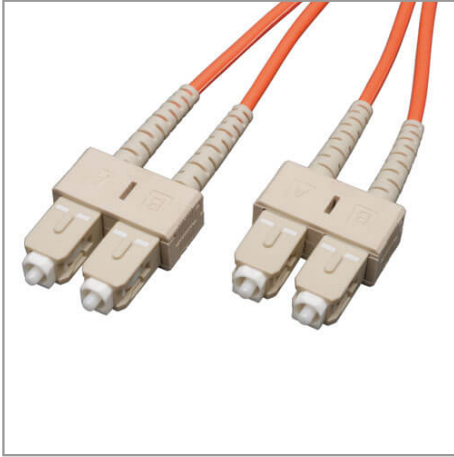


## Duplex Multimode 62.5/125 Fiber Patch Cable (SC/SC), 5M (16 ft.)

MODEL NUMBER: N306-05M



### Highlights

- Premium PVC 62.5/125µm multimode patch cables
- Attenuation loss meets or exceeds the latest industry standards

### System Requirements

- Any fiber optic hardware or NIC card requiring multimode duplex cable with SC/SC connectors

### Package Includes

- 5 meter duplex MMF cable SC/SC 62.5/125 fiber

### Features

- Manufactured from 62.5/125 duplex (zipcord) fiber
- PVC jacket
- Length: 5 meter Connectors: 2 SC connectors on each end
- Insertion loss testing performed on every connector (0.2db typical) and provided with cable
- Beveled edge on ends of glass makes insertion of plug a breeze
- Fiber made from glass ( not a polymer )
- Duplex multimode fiber is most commonly used in LAN applications where links are typically 10-ft. (3.05 m) or less
- Fiber optic distributed data interface (FDDI) rated and OFNR (riser rated)

## Specifications

OVERVIEW	
UPC Code	037332125736
Technology	Multimode
Optical Mode	OM1
PHYSICAL	
Cable Jacket Color	Orange
Connector Color	White
Cable Jacket Material	LSZH
Cable Jacket Rating	OFNR

Clad Diameter (microns)	125
Core Diameter (microns)	62.5
Number of Fibers	2
Cable Length (ft.)	16.4
Cable Length (m)	5.00
Cable Length (in.)	196.9
Minimum Bend Radius	20 mm (Dynamic); 10 mm (Static)
Shipping Dimensions (hwd / in.)	9.00 x 7.00 x 0.50
Shipping Dimensions (hwd / cm)	22.86 x 17.78 x 1.27
Shipping Weight (lbs.)	0.13
Shipping Weight (kg)	0.06
Fiber Cable Length	5M (16.4 ft)
<b>ENVIRONMENTAL</b>	
Operating Temperature Range	-4° to 140°F (-20° to 60°C)
Storage Temperature Range	-4° to 140°F (-20° to 60°C)
Operating Humidity Range	5% to 85% RH, Non-Condensing
Storage Humidity Range	35% to 65% RH, Non-Condensing
<b>COMMUNICATIONS</b>	
Network Compatibility	1 Gbps (Gigabit); 10 Gbps
Attenuation @ 850NM	3.0 dB/km
Insertion Loss	0.20 dB
<b>CONNECTIONS</b>	
Side A - Connector 1	SC DUPLEX (MALE)
Side B - Connector 1	SC DUPLEX (MALE)
Endface Polish	PC
<b>FEATURES &amp; SPECIFICATIONS</b>	
Push/Pull Tabs	No
Breakout	No
Trunk	No
<b>STANDARDS &amp; COMPLIANCE</b>	
Product Compliance	RoHS; REACH

**WARRANTY & SUPPORT**

Product Warranty Period  
(Worldwide)

Lifetime limited warranty