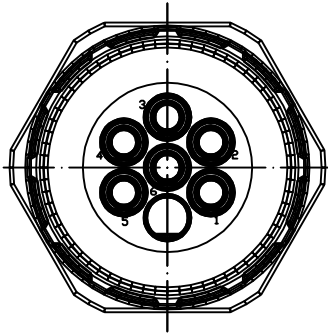
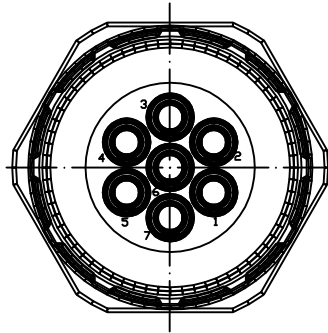


Views from "X" rotated

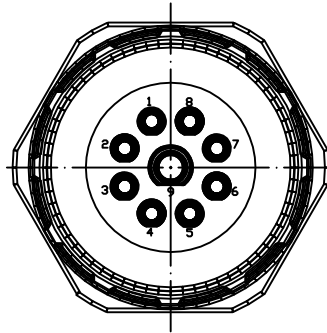
6-Pole



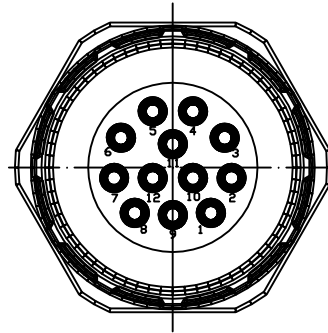
7-Pole



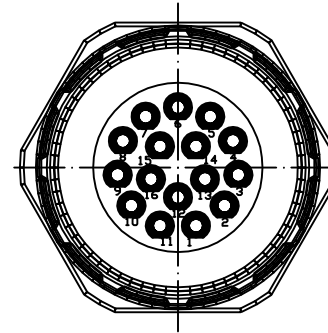
9-Pole
(8+1)



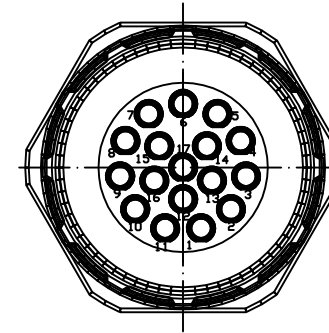
12-Pole



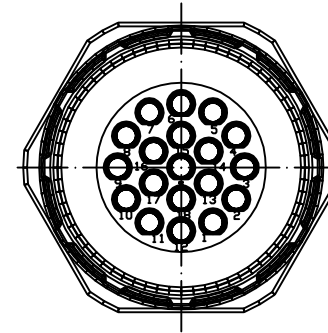
16-Pole



17-Pole

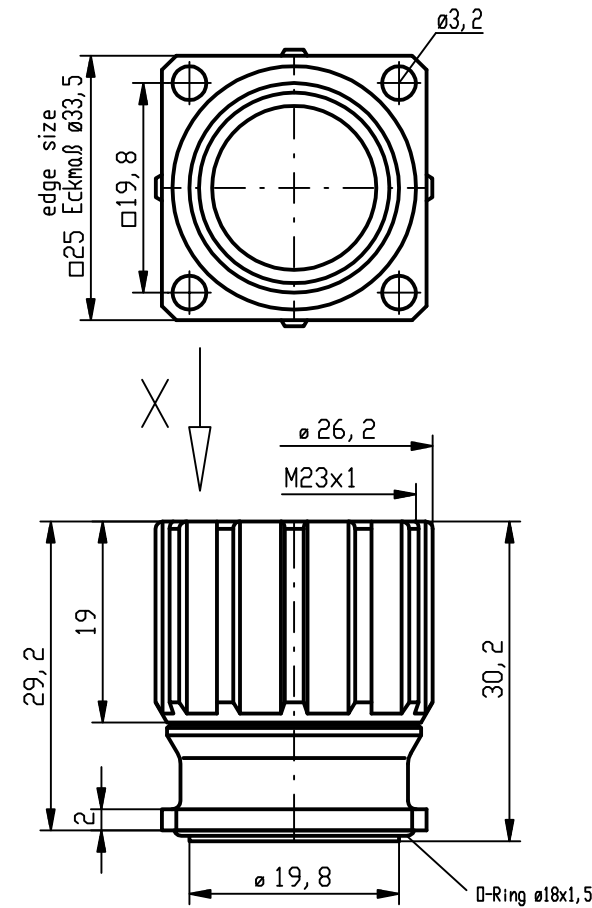


19-Pole
(16+3)



Cable Diameter	Solder Contacts	Crimp Contacts	Without Contacts
6 Pole	KRS6G20-553	KRS6G20-403	KRS6G20-003
	1202310001	1202310002	1202310003
Crimp range*		0,75-2,5mm ²	
7 Pole	KRS7G20-553	KRS7G20-403	KRS7G20-003
	1202310004	1202310005	1202310006
Crimp range*		0,75-2,5mm ²	
9 Pole (8+1)	KRS9G20-553	KRS9G20-423	KRS9G20-003
	1202310007	1202310008	1202310009
Crimp range*		0,34-1,0mm ² /0,75-2,5mm ²	
12 Pole	KRSCG20-553	KRSCG20-023	KRSCG20-003
	1202310010	1202310011	1202310012
Crimp range*		0,34-1,0mm ²	
16 Pole	KRSHG20-553	KRSHG20-023	KRSHG20-003
	1202310013	1202310014	1202310015
Crimp range*		0,34-1,0mm ²	
17 Pole	KRSJG20-553	KRSJG20-023	KRSJG20-003
	1202310016	1202310017	1202310018
Crimp range*		0,34-1,0mm ²	
19 Pole (16+3)	KRSLG20-553	KRSLG20-223	KRSLG20-003
	1202310019	1202310020	1202310021
Crimp range*		0,34-1,0mm ² /0,56-1,0mm ²	

*Crimp range only applies to "Crimp Contacts" version



Notes:

Tolerances (unless specified): DIN ISO 2768 m

DESCRIPTION EC NO.: WEU2009-0135 DRWN.: BBRAUCH 2008/11/14 CH'KD.: --- APPR.: JKOLB 2009/03/02	QUALITY SYMBOLS ▽ = 0 ▽C = 0	GENERAL TOLERANCES (UNLESS SPECIFIED)		DIMENSION STYLE	SCALE	DESIGN UNITS	FIRST ANGLE PROJECTION
		mm	INCH	MM	---	METRIC	
1	REV	DRAFT WHERE APPLICABLE MUST REMAIN WITHIN DIMENSIONS		SIZE	MOLEX INCORPORATED		
		see table		A3	SD-120231-001		
MATERIAL NO.				DOCUMENT NO.		SHEET NO.	
see table				SD-120231-001		1 OF 1	
THIS DRAWING CONTAINS INFORMATION THAT IS PROPRIETARY TO MOLEX INCORPORATED AND SHOULD NOT BE USED WITHOUT WRITTEN PERMISSION							

M23 FRONT PM RECEPT.
FEM FLANGE-MOUNT
4 X DIA 3.2MM

MOLEX INCORPORATED

SD-120231-001 1 OF 1

THIS DRAWING CONTAINS INFORMATION THAT IS PROPRIETARY TO MOLEX INCORPORATED AND SHOULD NOT BE USED WITHOUT WRITTEN PERMISSION