

# Bel Stewart Connector

UNSHIELDED 2-PIECE 30 SERIES PLUG  
ASSEMBLY INSTRUCTIONS

11118 Susquehanna Trail South Glen Rock, PA 17327

## STEWART CONNECTOR UNSHIELDED 2-PIECE 30 SERIES PLUG ASSEMBLY INSTRUCTIONS

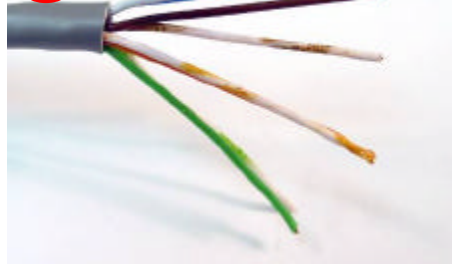
Assembly steps 1 – 10:

1



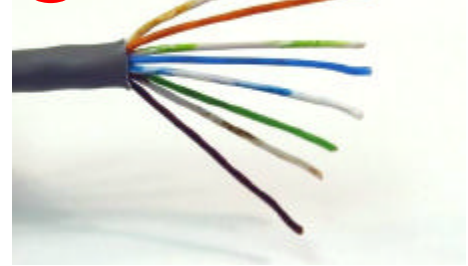
Remove approximately 1 ¼ inch of Cable Jacket

2



Separate Pairs and untwist them

3



Align wires (TIA 568-B shown)

4



Lay wires into approx. positions in Load Bar

5



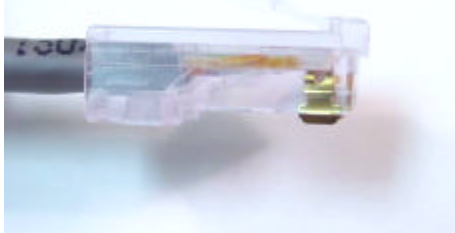
Insert each pair, being careful not to collapse ribs between each pair

6



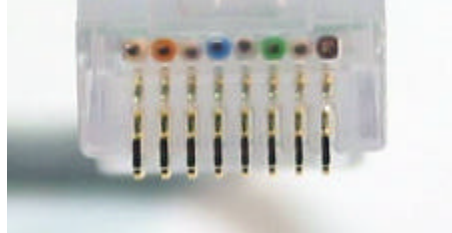
Trim wires flush with end of Load Bar

7



Insert wires and Load Bar into housing

8



Ensure wires go all the way to front of housing

9



Crimp wires and strain relief

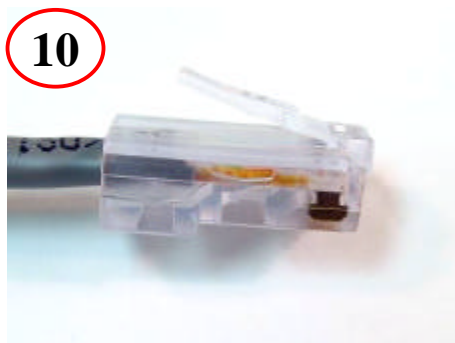
# Bel Stewart Connector

UNSHIELDED 2-PIECE 30 SERIES PLUG  
ASSEMBLY INSTRUCTIONS

11118 Susquehanna Trail South Glen Rock, PA 17327

## STEWART CONNECTOR UNSHIELDED 2-PIECE 30 SERIES PLUG ASSEMBLY INSTRUCTIONS

Assembly steps 1 – 10 (Cont.):



Assembly Complete